



Prepared on Mon Jul 23 22:24:59 2018

Street Names, Addresses and (Lot Numbers) for T5103



TRACT NO. 5103

PHASE III OF TENTATIVE TRACT NO. 4188

SHEET TWO OF TWO

IN THE CITY OF FRESNO, COUNTY OF FRESNO, STATE OF CALIFORNIA
SURVEYED AND PLATTED IN JULY 2002, BY GARY G. GIANNETTA

BASIS OF BEARINGS

THE WEST LINE OF THE SOUTHEAST QUARTER OF SECTION 17, TOWNSHIP 14 SOUTH, RANGE 21 EAST, MOUNT DIABLO BASE AND MERIDIAN, TAKEN AS BEARING NORTH 00°48'50" WEST, AS SHOWN ON THE MAP OF TRACT NO. 4188, RECORDED IN VOLUME 60, PAGES 60, 61 AND 62 OF PLATS, FRESNO COUNTY RECORDS.

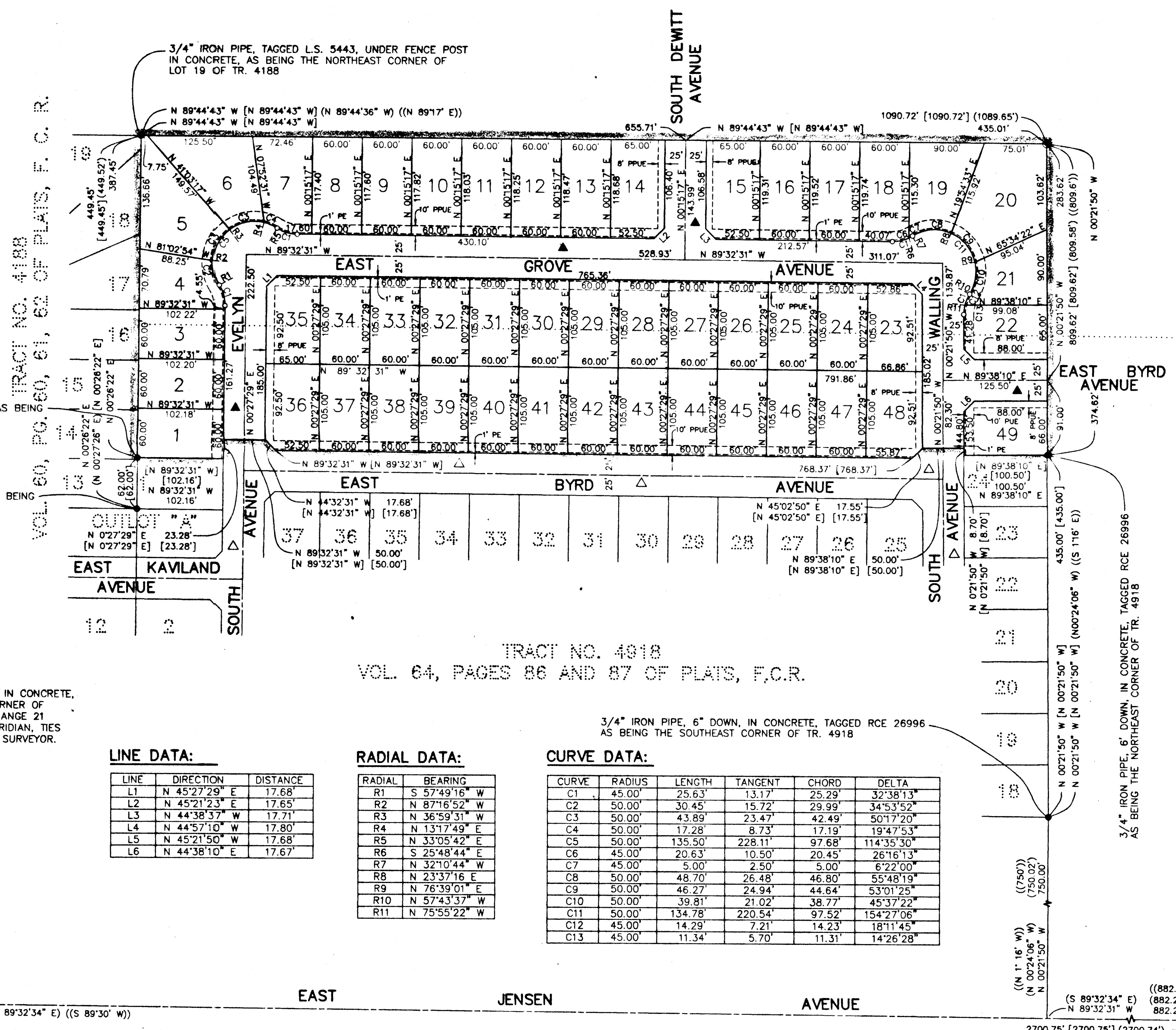
LEGEND:

- MONUMENT FOUND AND ACCEPTED AS NOTED
- SET 3/4" IRON PIPE, 30" LONG, 6" DOWN BELOW GROUND, TAGGED R.C.E. 26996
- ⊙ SET 3/4" IRON PIPE, 30" LONG, 4" UP IN 6" DIAMETER x 30" P.C.C. MONUMENT, DOWN 6" BELOW GROUND, TAGGED R.C.E. 26996
- PPUE PLANTING AND PUBLIC UTILITY EASEMENT NOW OFFERED FOR DEDICATION FOR PUBLIC USE
- PE PEDESTRIAN EASEMENT NOW OFFERED FOR DEDICATION FOR PUBLIC USE
- ▲ NOW OFFERED FOR DEDICATION FOR PUBLIC STREET PURPOSES
- TR. 4188 TRACT NO. 4188, RECORDED IN VOLUME 60, PAGES 60, 61 AND 62 OF PLATS, FRESNO COUNTY RECORDS.
- [] RECORD DATA AS PER MAP OF TRACT NO. 4918, RECORDED IN VOLUME 64, PAGES 86 AND 87 OF PLATS, F.C.R.
- () RECORD DATA AS PER MAP OF TR. 4188
- (()) RECORD DATA AS PER GRANT DEED RECORDED FEBRUARY 28, 1997 AS DOCUMENT NO. 97028070, O.R.F.C.
- △ PREVIOUSLY DEDICATED FOR PUBLIC STREET PURPOSES AS PER MAP OF TRACT NO. 4918
- BLUE BORDER INDICATES THE LIMITS OF THIS SUBDIVISION

NOTE:

1. SET 3/4" IRON PIPE, 6" DOWN, TAGGED RCE 26996 AT ALL LOT CORNERS

FRESNO COUNTY BRASS CAP MONUMENT, FLUSH, AS BEING THE SOUTHEAST CORNER OF SECTION 17, TOWNSHIP 14 SOUTH, RANGE 21 EAST, MOUNT DIABLO BASE AND MERIDIAN, TIES ON FILE WITH THE FRESNO COUNTY SURVEYOR (C.R.# 06161)



SCALE: 1" = 100'

BASIS OF BEARINGS

3/4" IRON PIPE, NO TAG, 6" DOWN, IN CONCRETE, AS BEING THE CENTER QUARTER CORNER OF SECTION 17, TOWNSHIP 14 SOUTH, RANGE 21 EAST, MOUNT DIABLO BASE AND MERIDIAN, TIES ON FILE WITH THE FRESNO COUNTY SURVEYOR. (C.R.# 04460)

3/4" IRON PIPE, 6" DOWN, TAGGED RCE 26996, AS BEING THE NORTHWEST CORNER OF LOT 1 OF TR. 4918

3/4" IRON PIPE, TAGGED L.S. 5443, DOWN 8", AS BEING THE SOUTHEAST CORNER OF LOT 13 OF TR. 4188

3/4" IRON PIPE, TAGGED L.S. 5443, UNDER FENCE POST IN CONCRETE, AS BEING THE NORTHEAST CORNER OF LOT 19 OF TR. 4188

3/4" IRON PIPE, 6" DOWN, IN CONCRETE, TAGGED RCE 26996 AS BEING THE SOUTHEAST CORNER OF TR. 4918

3/4" IRON PIPE, 6" DOWN, IN CONCRETE, TAGGED RCE 26996 AS BEING THE NORTHEAST CORNER OF TR. 4918

3/4" IRON PIPE, 6" DOWN, IN CONCRETE, TAGGED RCE 26996 AS BEING THE NORTHEAST CORNER OF TR. 4918

FRESNO COUNTY BRASS CAP MONUMENT, 2" BELOW ASPHALT, AS BEING THE SOUTH QUARTER CORNER OF SECTION 17, TOWNSHIP 14 SOUTH, RANGE 21 EAST, MOUNT DIABLO BASE AND MERIDIAN, TIES ON FILE WITH THE FRESNO COUNTY SURVEYOR (C.R.# 04458)

LINE DATA:

LINE	DIRECTION	DISTANCE
L1	N 45°27'29" E	17.68'
L2	N 45°21'23" E	17.65'
L3	N 44°38'37" W	17.71'
L4	N 44°57'10" W	17.80'
L5	N 45°21'50" W	17.68'
L6	N 44°38'10" E	17.67'

RADIAL DATA:

RADIAL	BEARING
R1	S 57°49'16" W
R2	N 87°16'52" W
R3	N 36°59'31" W
R4	N 13°17'49" E
R5	N 33°05'42" E
R6	S 25°48'44" E
R7	N 32°10'44" W
R8	N 23°37'16" E
R9	N 76°39'01" E
R10	N 57°43'37" W
R11	N 75°55'22" W

CURVE DATA:

CURVE	RADIUS	LENGTH	TANGENT	CHORD	DELTA
C1	45.00'	25.63'	13.17'	25.29'	32°38'13"
C2	50.00'	30.45'	15.72'	29.99'	34°53'52"
C3	50.00'	43.89'	23.47'	42.49'	50°17'20"
C4	50.00'	17.28'	8.73'	17.19'	19°47'53"
C5	50.00'	135.50'	228.11'	97.68'	114°35'30"
C6	45.00'	20.63'	10.50'	20.45'	26°16'13"
C7	45.00'	5.00'	2.50'	5.00'	6°22'00"
C8	50.00'	48.70'	26.48'	46.80'	55°48'19"
C9	50.00'	46.27'	24.94'	44.64'	53°01'25"
C10	50.00'	39.81'	21.02'	38.77'	45°37'22"
C11	50.00'	134.78'	220.54'	97.52'	154°27'06"
C12	45.00'	14.29'	7.21'	14.23'	18°11'45"
C13	45.00'	11.34'	5.70'	11.31'	14°26'28"