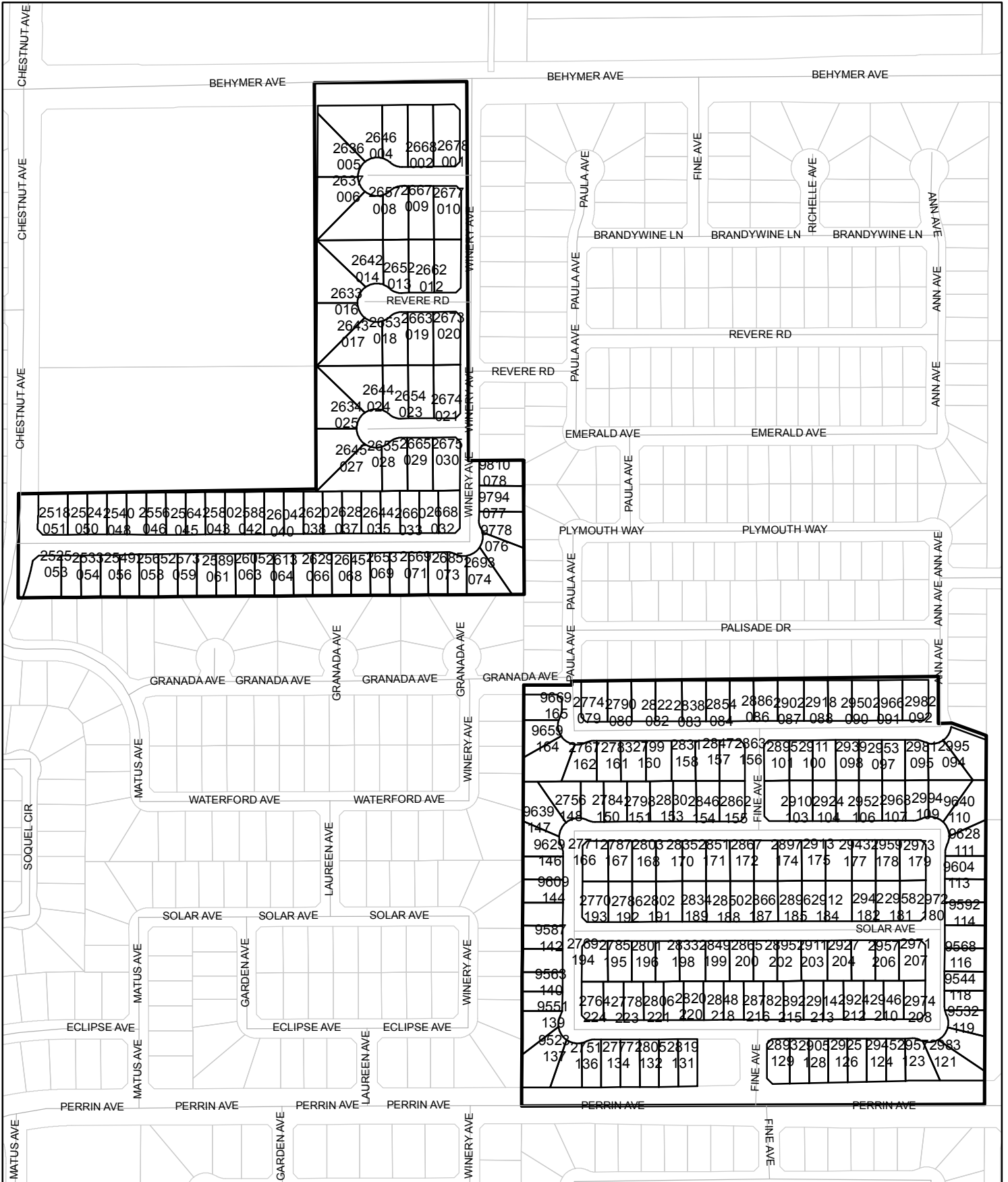




Street Names, Addresses and (Lot Numbers) for T5081

Prepared on Sat Apr 07 22:07:33 2018



MAP OF TRACT NO. 5081

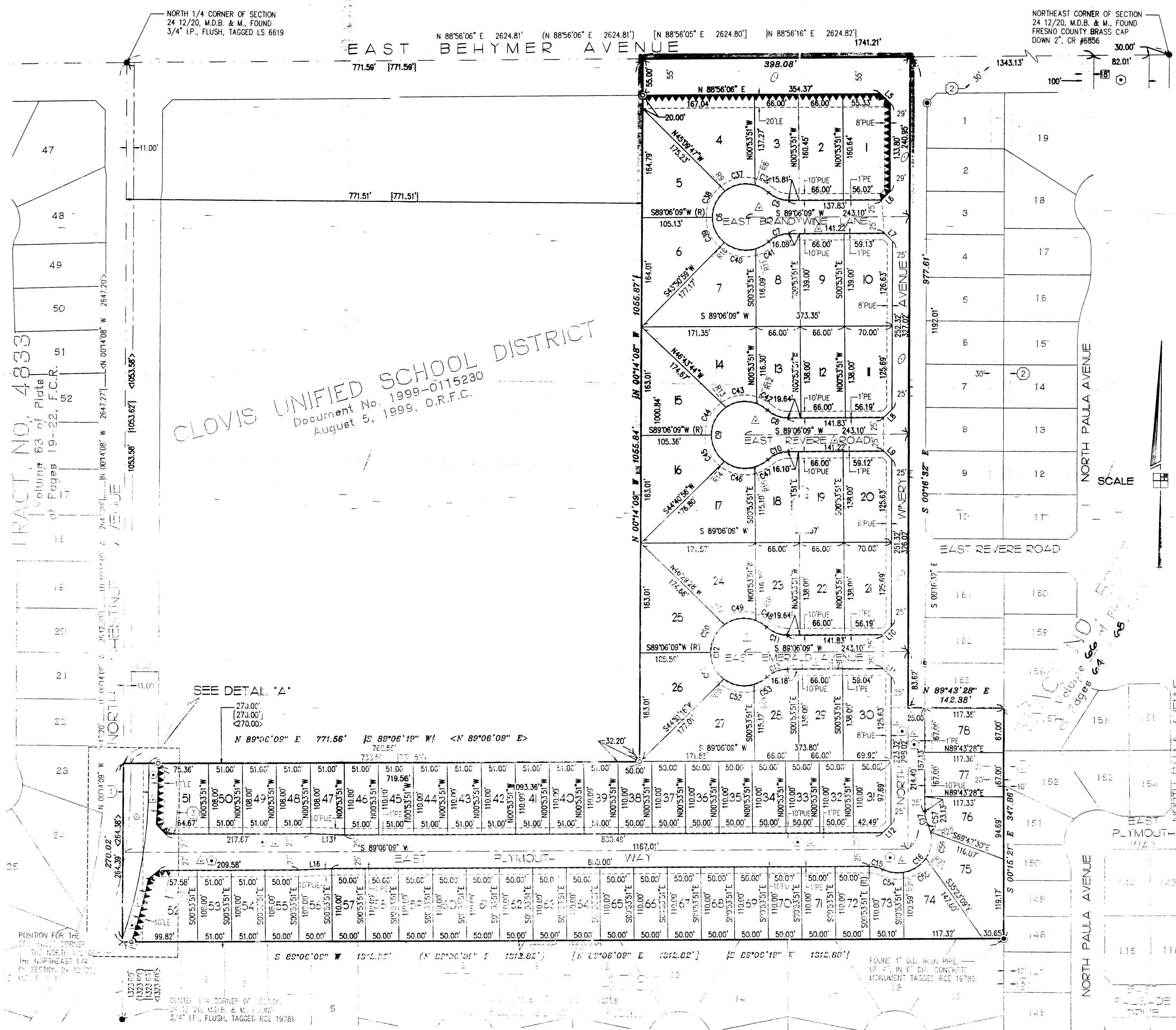
PHASE II OF TENTATIVE TRACT NO. 5007
[WITH 84 PLANNED DEVELOPMENT LOTS]

IN THE CITY OF FRESNO
FRESNO COUNTY, CALIFORNIA
SURVEYED AND PLATTED IN APRIL, 2002
BY DUNKEL ASSOCIATES

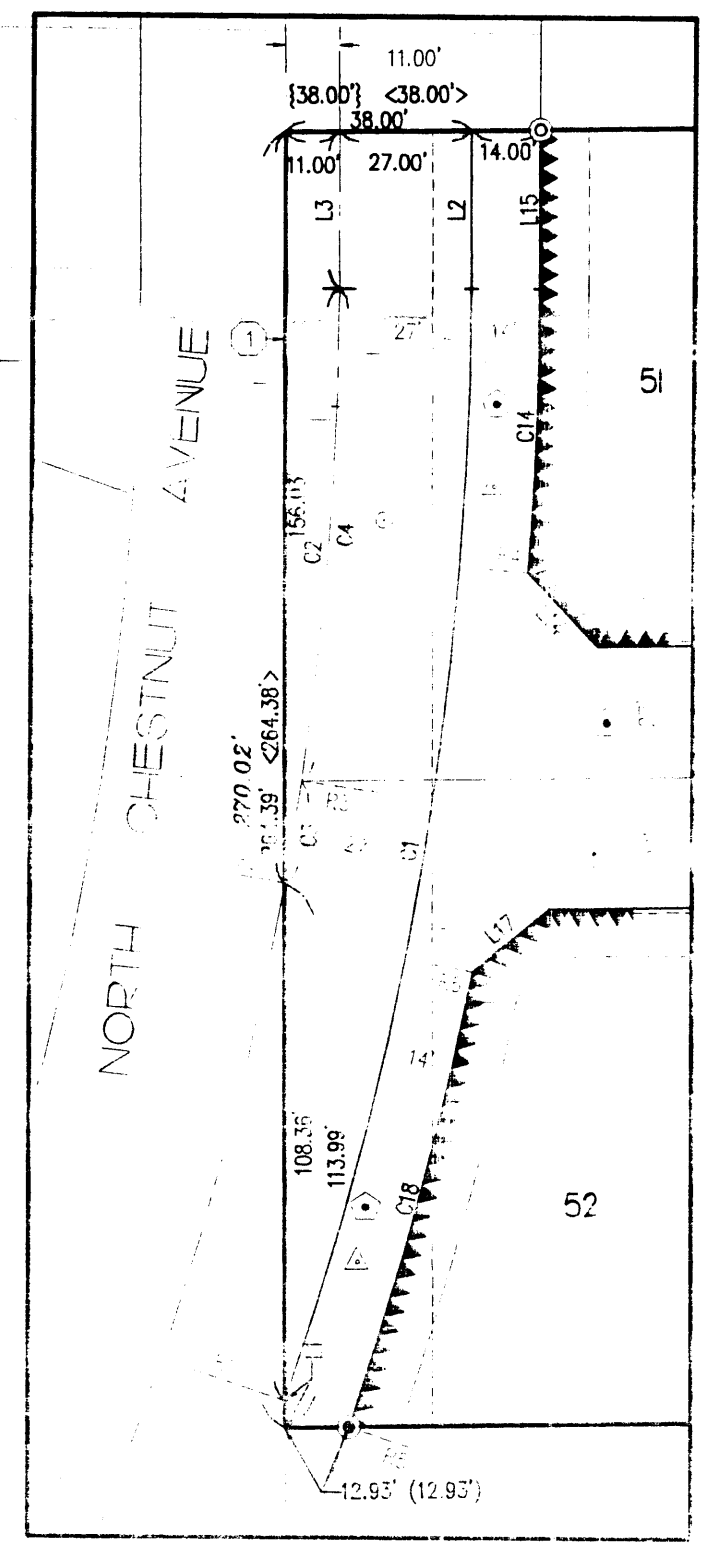
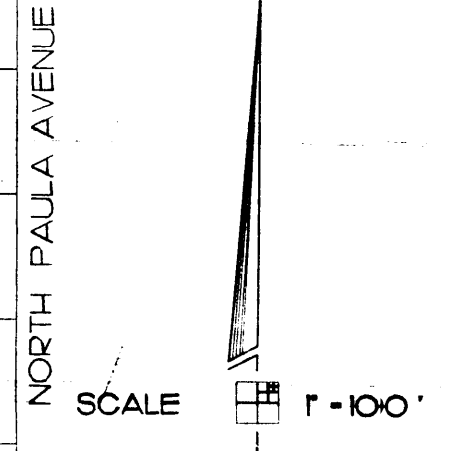
CONSISTING OF FIVE SHEETS
SHEET 3 OF 5 SHEETS

SEE SHEET TWO FOR BASIS
OF BEARINGS AND LEGEND

SEE SHEET FIVE FOR CURVE,
LINE AND RADIAL TABLES



CLOVIS UNIFIED SCHOOL DISTRICT
Document No. 1999-0115230
August 5, 1999, O.R.F.C.



DETAIL 'A'
SCALE: 1" = 40'

REVISION

BY: ESPINOZA, ROY, ZENZO
DUNKEL ASSOCIATES

MAP OF TRACT NO. 5081

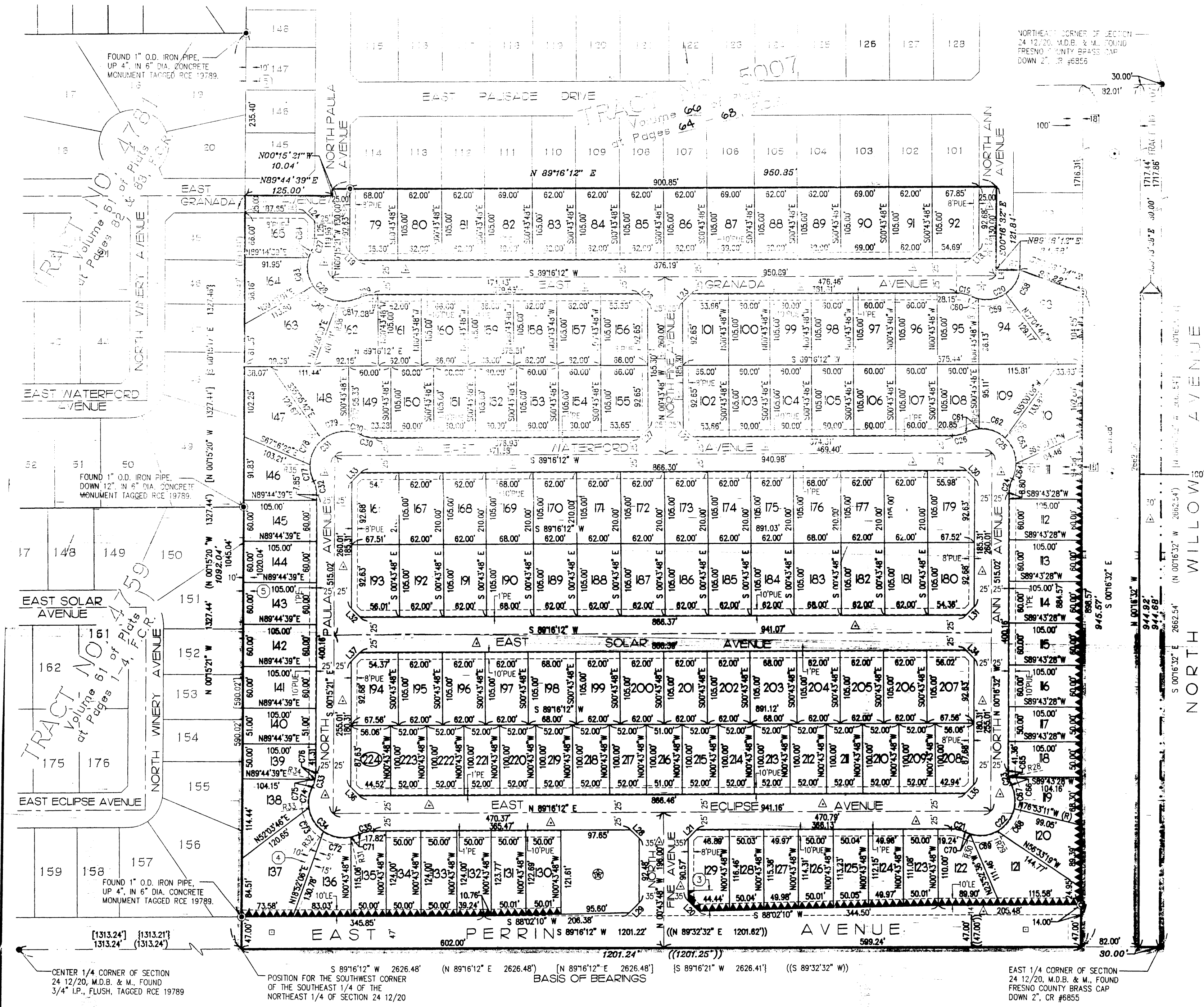
PHASE II OF TENTATIVE TRACT NO. 5007
[WITH 84 PLANNED DEVELOPMENT LOTS]

IN THE CITY OF FRESNO
FRESNO COUNTY, CALIFORNIA
SURVEYED AND PLATTED IN APRIL, 2002
BY JUNKEL ASSOCIATES

CONSISTING OF FIVE SHEETS
SHEET 4 OF 5 SHEETS

SEE SHEET TWO FOR BASIS
OF BEARINGS AND LEGEND

SEE SHEET FIVE FOR CURVE
LINE AND RADIAL TABLES



NORTHEAST CORNER OF SECTION
24 12/20, M.D.B. & M., FOUND
FRESNO COUNTY BRASS CAP
DOWN 2", CR #6855

FOUND 1" O.D. IRON PIPE,
UP 4", IN 6" DIA. CONCRETE
MONUMENT TAGGED RCE 19789.

FOUND 1" O.D. IRON PIPE,
DOWN 12", IN 6" DIA. CONCRETE
MONUMENT TAGGED RCE 19789.

FOUND 1" O.D. IRON PIPE,
UP 4", IN 6" DIA. CONCRETE
MONUMENT TAGGED RCE 19789.

POSITION FOR THE SOUTHWEST CORNER
OF THE SOUTHEAST 1/4 OF THE
NORTHEAST 1/4 OF SECTION 24 12/20

EAST 1/4 CORNER OF SECTION
24 12/20, M.D.B. & M., FOUND
FRESNO COUNTY BRASS CAP
DOWN 2", CR #6855

SCALE 1" = 100'

REVISIONS	
08/02/02	RE
09/10/02	RE

BY: ESPINOZA - 04/25/02
DUNKEL CADFILE: 02013FN