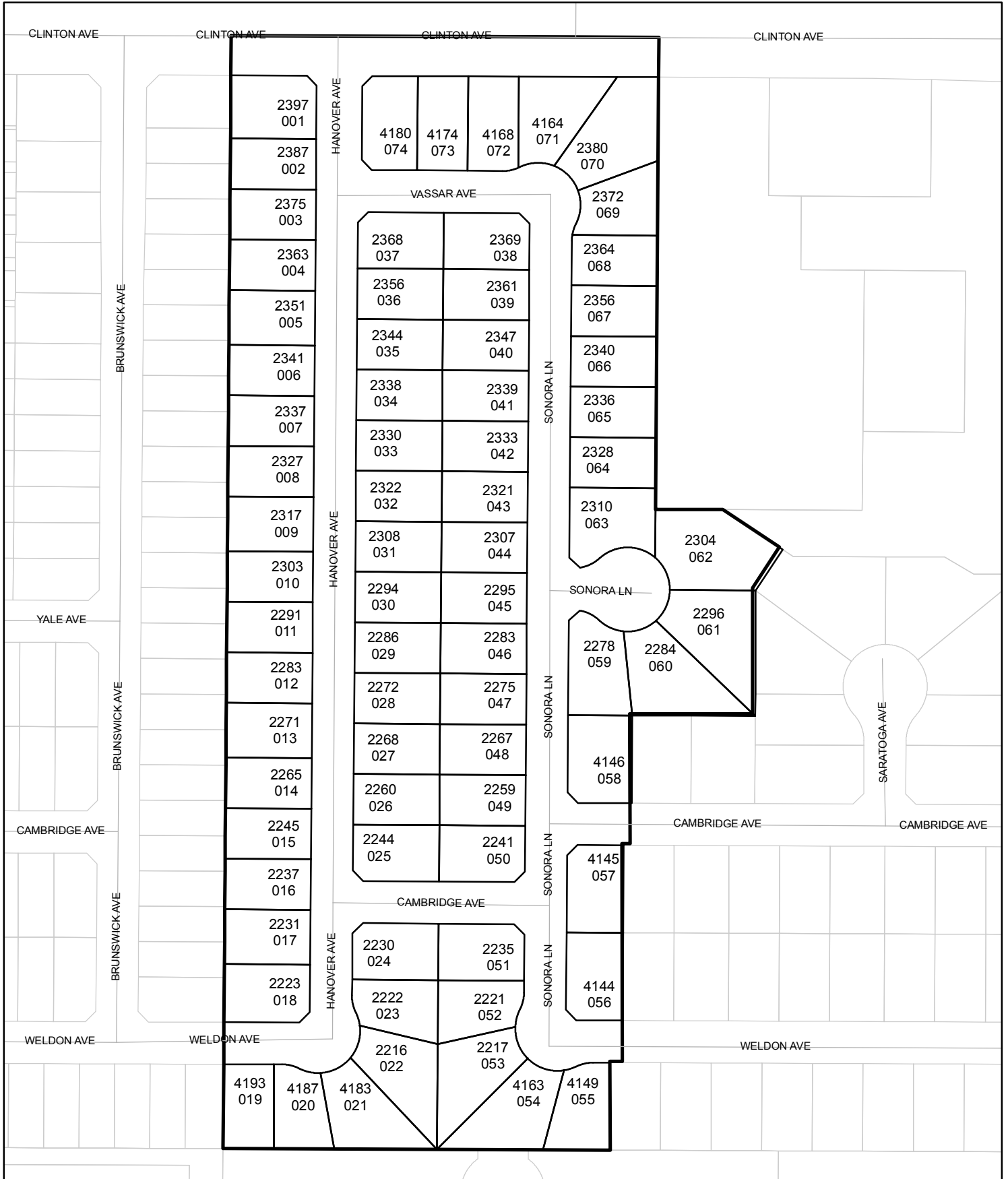




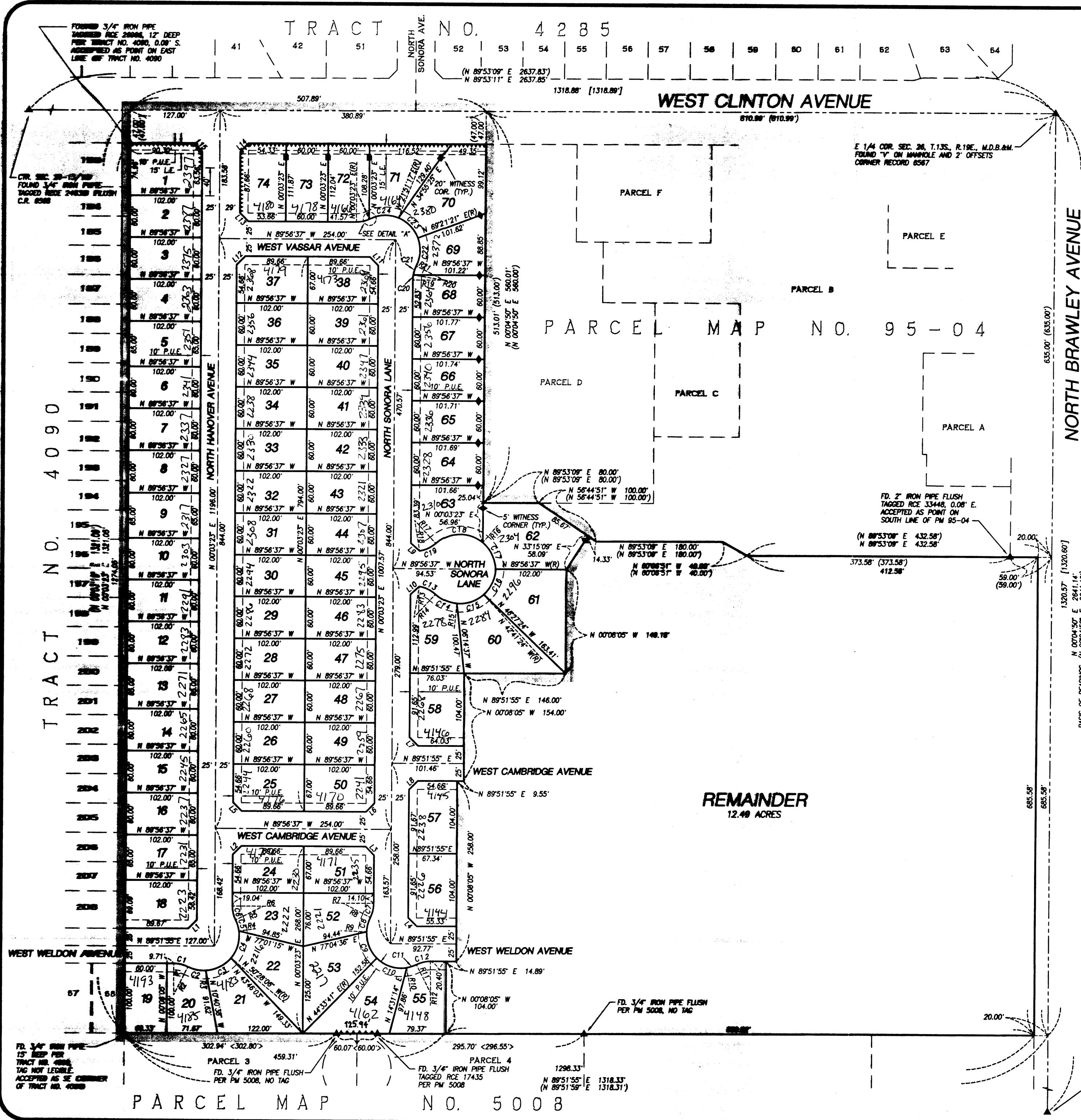
Street Names, Addresses and (Lot Numbers) for T5071

Prepared on Tue Sep 12 22:59:02 2017



FINAL MAP OF TRACT NO. 5071 CRESTWOOD

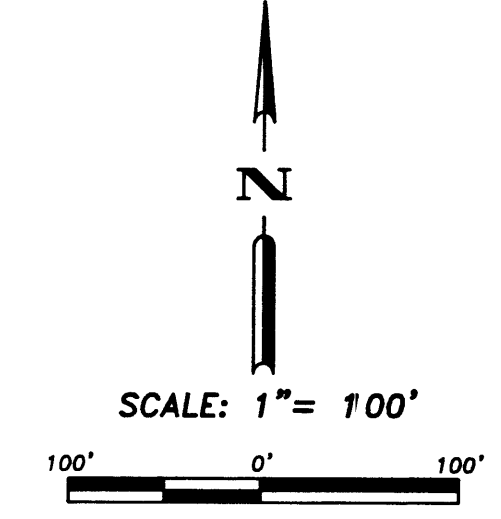
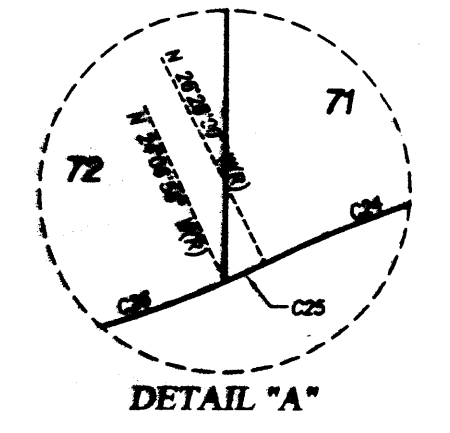
TRACT NO. 4285



RADIAL	BEARING
R1	N 00°08'05" W(R)
R2	N 26°23'26" E(R)
R3	N 03°18'38" W(R)
R4	N 82°22'22" E(R)
R5	N 63°31'51" E(R)
R6	N 89°56'37" W(R)
R7	N 89°56'37" W(R)
R8	N 63°25'06" W(R)
R9	N 87°57'04" W(R)
R10	N 09°35'52" W(R)
R11	N 26°39'36" W(R)
R12	N 00°08'05" W(R)
R13	N 09°20'01" E(R)
R14	N 42°35'36" E(R)
R15	N 05°15'05" E(R)
R16	N 40°13'34" E(R)
R17	N 42°28'50" W(R)
R18	N 09°13'16" W(R)
R19	N 89°56'37" W(R)
R20	N 80°46'30" W(R)
R21	N 63°25'06" W(R)

CURVE	DELTA	RADIUS	LENGTH	TANGENT	CHORD
C1	26°31'31"	45.00'	20.83'	10.61'	20.85'
C2	29°42'05"	50.00'	25.92'	13.26'	25.83'
C3	47°09'28"	50.00'	41.15'	21.82'	40.00'
C4	47°09'32"	50.00'	41.15'	21.82'	40.00'
C5	18°50'30"	50.00'	18.44'	8.30'	18.37'
C6	26°31'31"	45.00'	20.83'	10.61'	20.85'
C7	26°31'31"	45.00'	20.83'	10.61'	20.85'
C8	24°31'58"	50.00'	21.41'	10.87'	21.25'
C9	47°29'14"	50.00'	41.44'	21.88'	40.25'
C10	54°09'33"	50.00'	47.26'	25.56'	45.52'
C11	17°03'44"	50.00'	14.89'	7.50'	14.83'
C12	26°31'31"	45.00'	20.83'	10.61'	20.85'
C13	33°15'34"	45.00'	26.12'	13.44'	25.78'
C14	37°20'30"	50.00'	32.59'	18.99'	32.01'
C15	47°56'30"	50.00'	41.84'	22.23'	40.83'
C16	47°15'13"	50.00'	41.24'	21.87'	40.88'
C17	50°14'49"	50.00'	43.86'	23.33'	42.29'
C18	82°30'24"	50.00'	72.00'	43.85'	85.94'
C19	33°15'34"	45.00'	26.12'	13.44'	25.78'
C20	9°10'07"	45.00'	7.20'	3.61'	7.19'
C21	17°21'24"	45.00'	13.63'	6.87'	13.58'
C22	47°13'33"	50.00'	41.21'	21.86'	40.88'
C23	47°30'03"	50.00'	41.45'	22.00'	40.28'
C24	48°19'26"	50.00'	42.17'	22.43'	40.93'
C25	22°11'12"	45.00'	1.85'	0.92'	1.85'
C26	24°10'19"	45.00'	18.98'	9.84'	18.84'

LINE	BEARING	LENGTH
L1	N 44°57'30" E	17.47'
L2	N 45°03'23" E	17.48'
L3	N 44°56'37" W	17.48'
L4	N 45°02'21" W	17.44'
L5	N 44°56'37" W	17.48'
L6	N 45°03'23" E	17.48'
L7	N 45°02'21" W	17.44'
L8	N 44°57'30" E	17.47'
L9	N 47°53'14" W	16.82'
L10	N 47°59'50" E	16.82'
L11	N 44°56'37" W	17.48'
L12	N 45°03'23" E	17.48'
L13	N 44°56'37" W	17.48'
L14	N 44°58'17" E	16.53'
L15	N 45°01'43" W	16.53'



- NOTE: SET 3/4" IRON PIPE TAGGED PLS 4714 AT ALL LOT CORNERS.
- LEGEND**
- ▲ MONUMENT FOUND AND ACCEPTED AS DESCRIBED
 - ◆ SET 3/4" I.P. TAGGED PLS 4714 ON LOT LINE AS SHOWN, 5.00' FROM NEAREST LOT CORNER (DISTANCES SHOWN ARE TO THE TRUE CORNER)
 - SET 3/4" I.P. TAGGED PLS 4714 ON LOT LINE AS SHOWN, 20.00' FROM NEAREST LOT CORNER (DISTANCES SHOWN ARE TO THE TRUE CORNER)
 - () RECORD DATA PER PARCEL MAP NO. 85-04, REC. IN BK. 56 OF PARCEL MAPS, AT PG. 87 & 88, F.C.R., OR CALCULATED THEREFROM.
 - [] RECORD DATA PER TRACT NO. 4090, REC. IN VOL. 54 OF PLATS, AT PG. 67 & 68, F.C.R., OR CALCULATED THEREFROM.
 - < > RECORD DATA PER PARCEL MAP NO. 5008, REC. IN BK. 56 OF PARCEL MAPS, AT PG. 52, F.C.R., OR CALCULATED THEREFROM.
 - P.U.E. PUBLIC UTILITY EASEMENT NOW OFFERED FOR DEDICATION FOR PUBLIC USE
 - L.E. LANDSCAPE EASEMENT NOW OFFERED FOR DEDICATION FOR PUBLIC USE
 - (R) RADIAL BEARING
 - BLUE BORDER INDICATES LIMITS OF SUBDIVISION
 - ***** RELINQUISHMENT OF DIRECT ACCESS RIGHTS

BASIS OF BEARINGS
 THE EAST LINE OF THE SOUTHEAST 1/4 OF SEC. 26-13/19, PER PER P.M. NO. 95-04, RECORDED IN BK. 56 OF PARCEL MAPS, AT PG. 80 & 81, F.C.R.
 TAKEN AS: N 00°04'50" E

OFFICIAL ADDRESS NUMBERS
 WHICH APPEARS ON THIS PAGE MUST BE INSTALLED BEFORE FINAL INSPECTION AS PER SECTION 12-1304
 Paul Bernat 6/18/63

SE COR. SEC. 26, T.13S., R.19E., M.D.B.&M.
 FOUND FRESNO COUNTY BRASS CAP MONUMENT 3' DEEP
 CORNER RECORD 6117

Quad Knopf
 8485 N. FRESNO STREET
 SUITE 300
 FRESNO, CA 93720
 TEL: (509) 448-3488
 FAX: (509) 438-7884

SHEET 2 OF 2