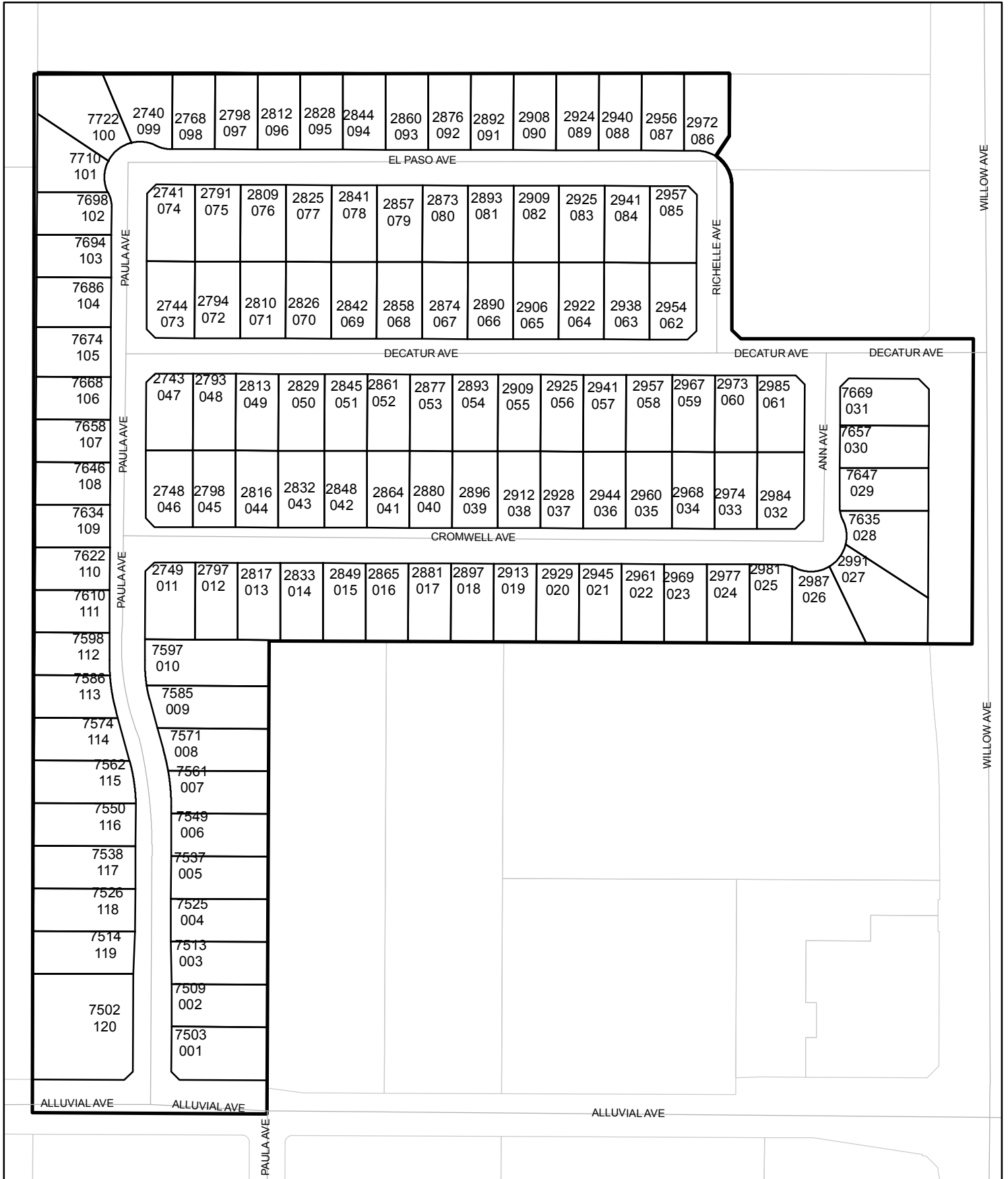




Street Names, Addresses and (Lot Numbers) for T5067

Prepared on Mon Jul 23 22:30:01 2018



MAP OF TRACT NO. 5067

IN THE CITY OF FRESNO
FRESNO COUNTY, CALIFORNIA
SURVEYED AND PLATTED IN AUGUST, 2003
BY INGELS - BRAUN & ASSOCIATES

CONSISTING OF THREE SHEETS
SHEET 3 OF 3 SHEETS

SEE SHEET TWO FOR BASIS
OF BEARINGS AND LEGEND

CURVE TABLE

CURVE	RADIUS	LENGTH	CHORD	DELTA
C1	50.00'	49.22'	47.26'	56°24'16"
(C1)	50.00'	49.22'	---	56°24'16"
C2	250.00'	66.95'	66.75'	15°20'41"
C3	250.00'	66.89'	66.69'	15°19'47"
C4	45.00'	20.83'	20.65'	26°31'31"
C5	50.00'	124.76'	94.82'	142°58'10"
C6	45.00'	20.83'	20.65'	26°31'31"
C7	275.00'	73.65'	73.43'	15°20'41"
C8	225.00'	60.20'	60.02'	15°19'47"
C9	50.00'	29.32'	28.90'	33°35'44"
C10	45.00'	20.83'	20.65'	26°31'31"
C11	50.00'	124.75'	94.82'	142°57'01"
C12	45.00'	20.83'	20.65'	26°31'31"
C13	275.00'	73.58'	73.36'	15°19'47"
C14	225.00'	60.26'	60.08'	15°20'41"
C15	275.00'	50.33'	50.26'	10°29'11"
C16	275.00'	23.32'	23.31'	4°51'30"
C17	225.00'	24.45'	24.44'	6°13'33"
C18	225.00'	35.75'	35.71'	9°06'14"
C19	45.00'	16.35'	16.26'	20°49'24"
C20	45.00'	4.48'	4.48'	5°42'07"
C21	50.00'	50.38'	48.27'	57°43'45"
C22	50.00'	40.00'	38.94'	45°50'19"
C23	50.00'	34.36'	33.71'	39°24'06"
C24	45.00'	14.50'	14.44'	18°27'43"
C25	45.00'	6.33'	6.33'	8°03'48"
C26	50.00'	35.54'	34.80'	40°43'35"
C27	50.00'	42.16'	40.92'	48°18'45"
C28	50.00'	45.91'	44.31'	52°36'19"
C29	50.00'	1.14'	1.14'	1°18'22"
C30	275.00'	22.00'	21.99'	4°35'01"
C31	275.00'	51.58'	51.50'	10°44'46"
C32	225.00'	56.62'	56.47'	14°25'06"
C33	225.00'	3.64'	3.64'	0°55'35"

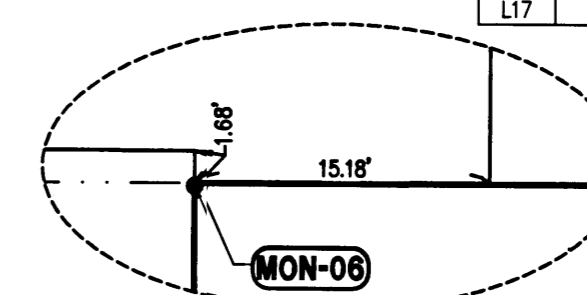
LINE TABLE

LINE	BEARING	LENGTH
L1	N33°30'59"E	34.04'
(L1)	N33°30'59"E	34.04'
L2	S45°04'45"E	17.46'
(L2)	N45°04'45"W	17.46'
L3	N44°57'20"E	17.47'
L4	S45°02'23"E	20.67'
L5	N44°58'00"W	16.53'
L6	N01°52'23"W	60.03'
L7	N44°57'42"E	17.47'
L8	S45°02'37"E	17.45'
L9	S44°58'34"W	17.47'
L10	N45°01'30"W	17.45'
L11	N44°58'17"E	17.47'
L12	S45°04'33"E	17.47'
L13	S44°55'15"W	17.47'
L14	N45°01'27"W	17.45'
L15	N44°57'48"E	17.47'
L16	S01°56'43"W	60.03'
L17	S45°02'20"W	16.53'

RADIAL TABLE

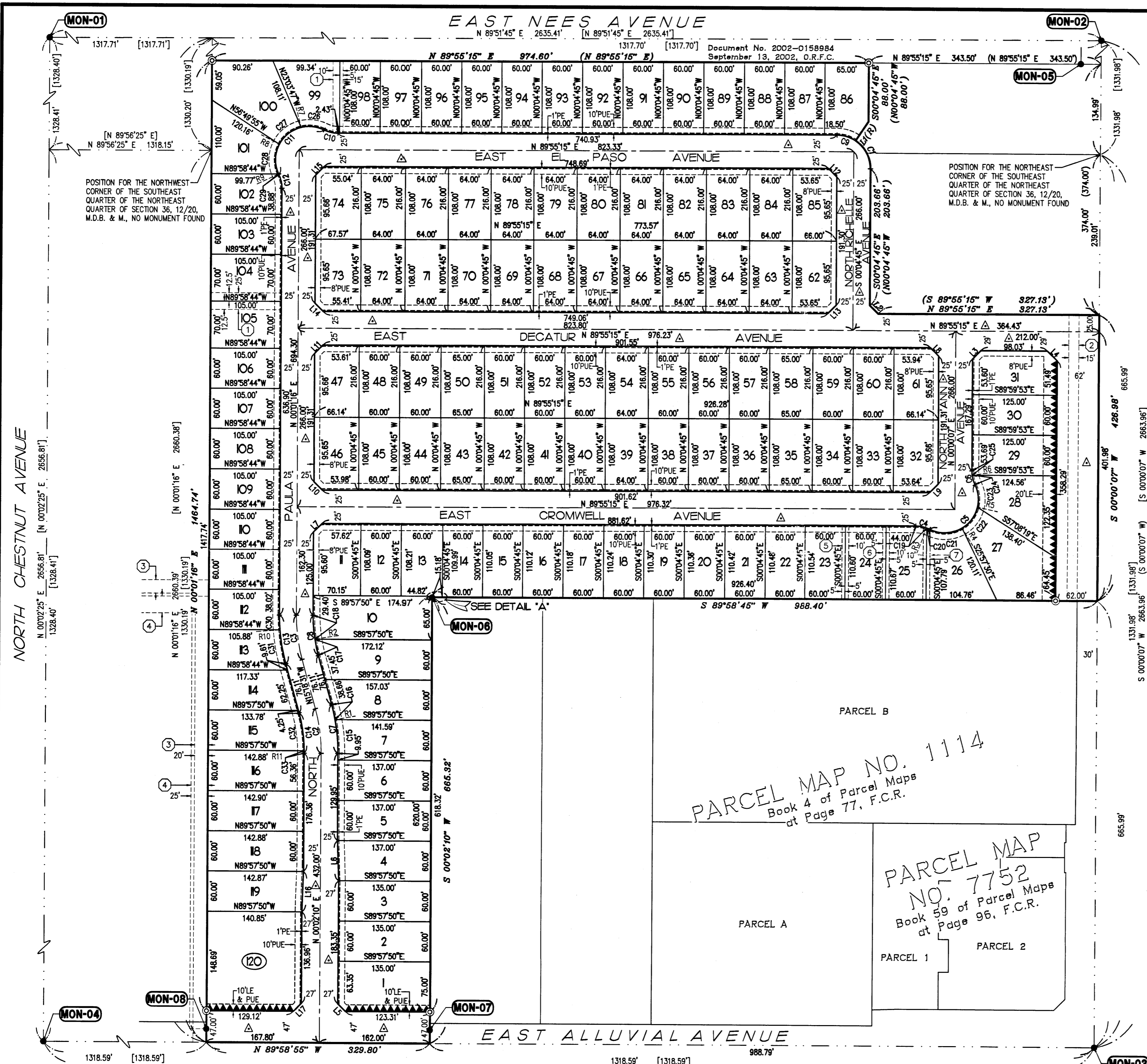
RADIAL	BEARING
R1	N79°32'59"E
R2	S80°55'02"W
R3	N20°44'39"E
R4	S31°16'59"E
R5	S77°07'18"E
R6	S81°56'19"W
R7	N14°16'49"W
R8	N62°35'34"W
R9	S64°48'07"W
R10	S85°26'15"E
R11	N89°06'35"E

SCALE 1" = 100'



REVISIONS
12/2/03 - RE

BY: ESPINOZA -08/28/03
IBA CADFILE: OIO38FM



PARCEL MAP NO. 1114
Book 4 of Parcel Maps
at Page 77, F.C.R.

PARCEL MAP NO. 7752
Book 59 of Parcel Maps
at Page 96, F.C.R.

PARCEL A
PARCEL B
PARCEL 2

Document No. 2002-0158984
September 13, 2002, O.R.F.C.