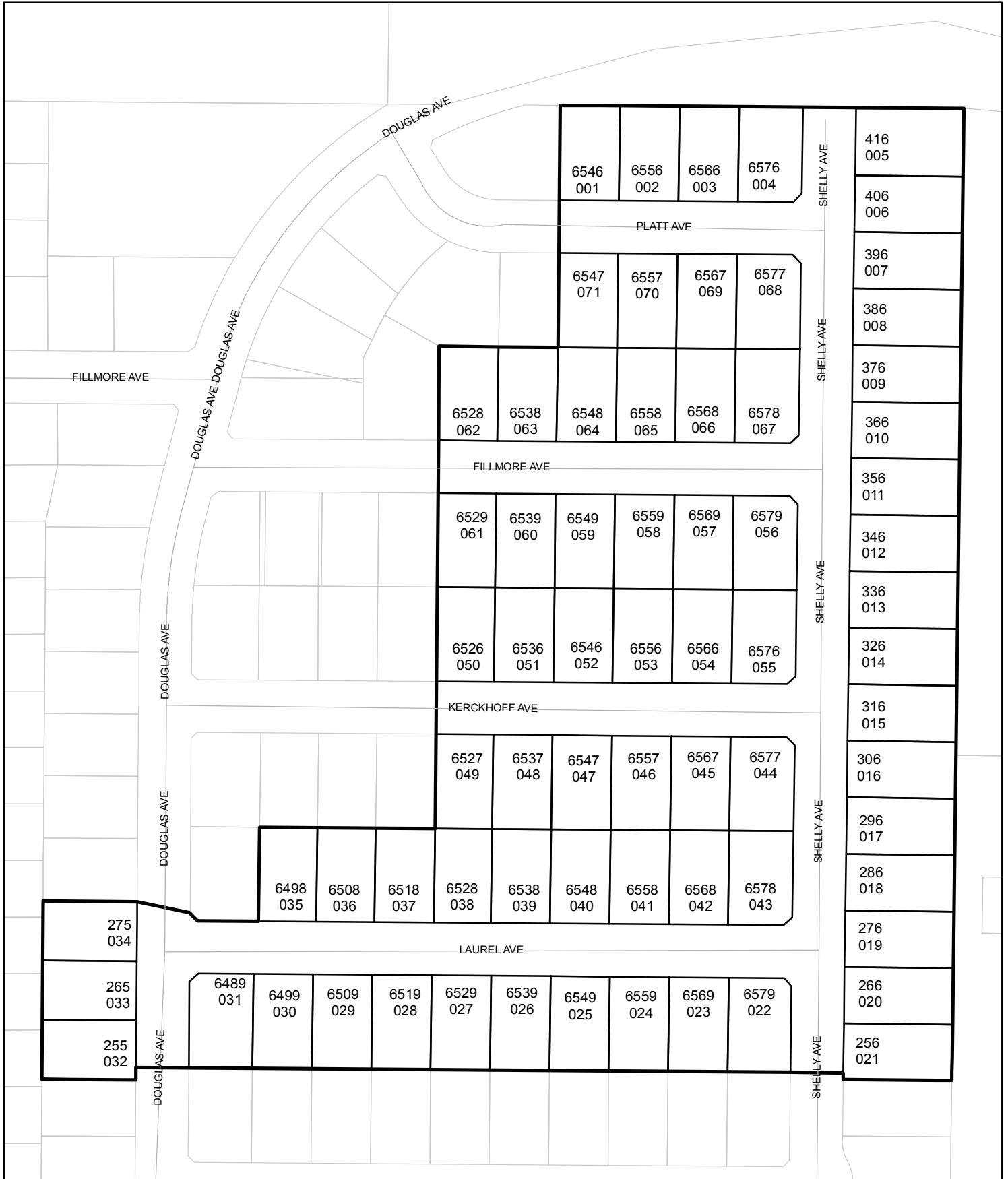




# Street Names, Addresses and (Lot Numbers) for T5066

Prepared on Fri Mar 16 22:14:18 2018



# TRACT No. 5066

IN THE CITY OF FRESNO  
 FRESNO COUNTY, CALIFORNIA  
 SURVEYED AND PLATTED IN JANUARY, 2002  
 BY YAMABE & HORN ENGINEERING, INC.  
 CONSISTING OF 2 SHEETS  
 SHEET 2 OF 2

### LEGEND

- FOUND 3/4" IRON PIPE, DOWN 0.5', TAGGED "RCE 26996", UNLESS OTHERWISE NOTED
- SET 3/4" IRON PIPE, 30" LONG, 4" UP IN 6" DIAMETER X 30" P.C.C. MONUMENT, DOWN 6" BELOW GROUND, TAGGED RCE 30501
- FOUND CITY DURABLE MONUMENT PER TRACT No. 4677
- FOUND CITY DURABLE MONUMENT PER TRACT No. 4706
- ▼ NOW OFFERED FOR DEDICATION FOR PUBLIC STREET AND UTILITY PURPOSES
- FD FOUND
- ORFC OFFICIAL RECORDS FRESNO COUNTY
- F.C.R. FRESNO COUNTY RECORDS
- PUE PUBLIC UTILITY EASEMENT
- BCM BRASS CAP MONUMENT
- ( ) DATA PER TRACT No. 4677, RECORDED IN VOLUME 59 OF PLATS AT PAGES 76 & 77, F.C.R.
- [ ] DATA PER TRACT No. 4706, RECORDED IN VOLUME 62 OF PLATS AT PAGES 11 & 12, F.C.R.
- { } DATA PER PARCEL MAP No. 5387, RECORDED IN BOOK 36 OF PARCEL MAPS AT PAGE 66, F.C.R.
- < > DATA PER TRACT No. 4995, RECORDED IN VOLUME 46 OF PLATS AT PAGES 13, 14, & 15, F.C.R.

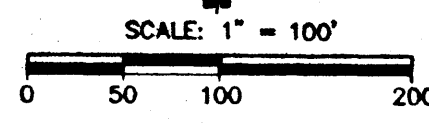
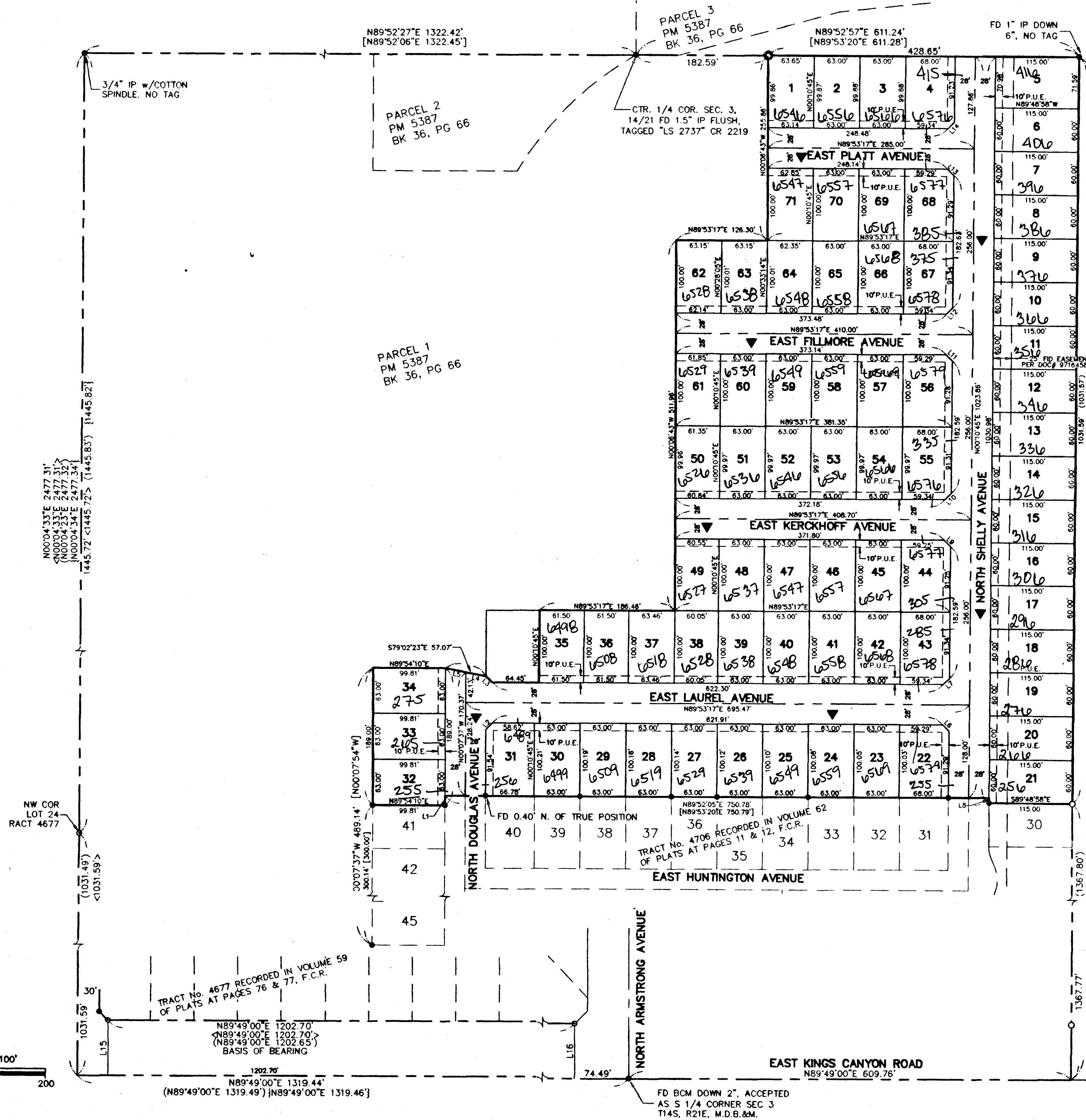
### BASIS OF BEARINGS

THE SOUTH LINE OF LOTS 36 THRU 54 OF TRACT No. 4677 TAKEN TO BE N89°49'00"E, PER TRACT No. 4677, RECORDED IN VOLUME 59 OF PLATS AT PAGES 76 & 77, F.C.R.

### NOTE:

SET 3/4" IRON PIPE, DOWN 0.5', TAGGED "RCE 30501" AT ALL LOT CORNERS, UNLESS OTHERWISE NOTED

LINE	LENGTH	BEARING	RECORD DATA
L1	13.14	S00°07'37"E	
L2	12.29	S44°53'05"W	
L3	12.24	S45°09'07"E	
L4	28.53	S79°02'23"E	
L5	28.53	N79°02'23"W	
L6	12.29	N44°57'59"W	
L7	12.28	S45°02'12"W	
L8	7.13	N00°10'45"E	
L9	12.35	S44°58'23"E	
L10	12.27	S45°02'01"W	
L11	12.29	S44°57'45"E	
L12	12.27	S45°02'01"W	
L13	12.29	S44°57'59"E	
L14	12.27	S45°02'01"W	
L15	76.00	S00°11'00"E	<76.00> <S00°11'00"E>
L16	76.00	S00°11'00"E	<76.00> <S00°11'00"E>



TRACT No. 4677 RECORDED IN VOLUME 59 OF PLATS AT PAGES 76 & 77, F.C.R.  
 N89°49'00"E 1202.70'  
 N89°49'00"E 1202.70'  
 N89°49'00"E 1202.65'  
 BASIS OF BEARING

FD BCM DOWN 2", ACCEPTED AS S 1/4 CORNER SEC 3 T14S, R21E, M.D.B.&M.