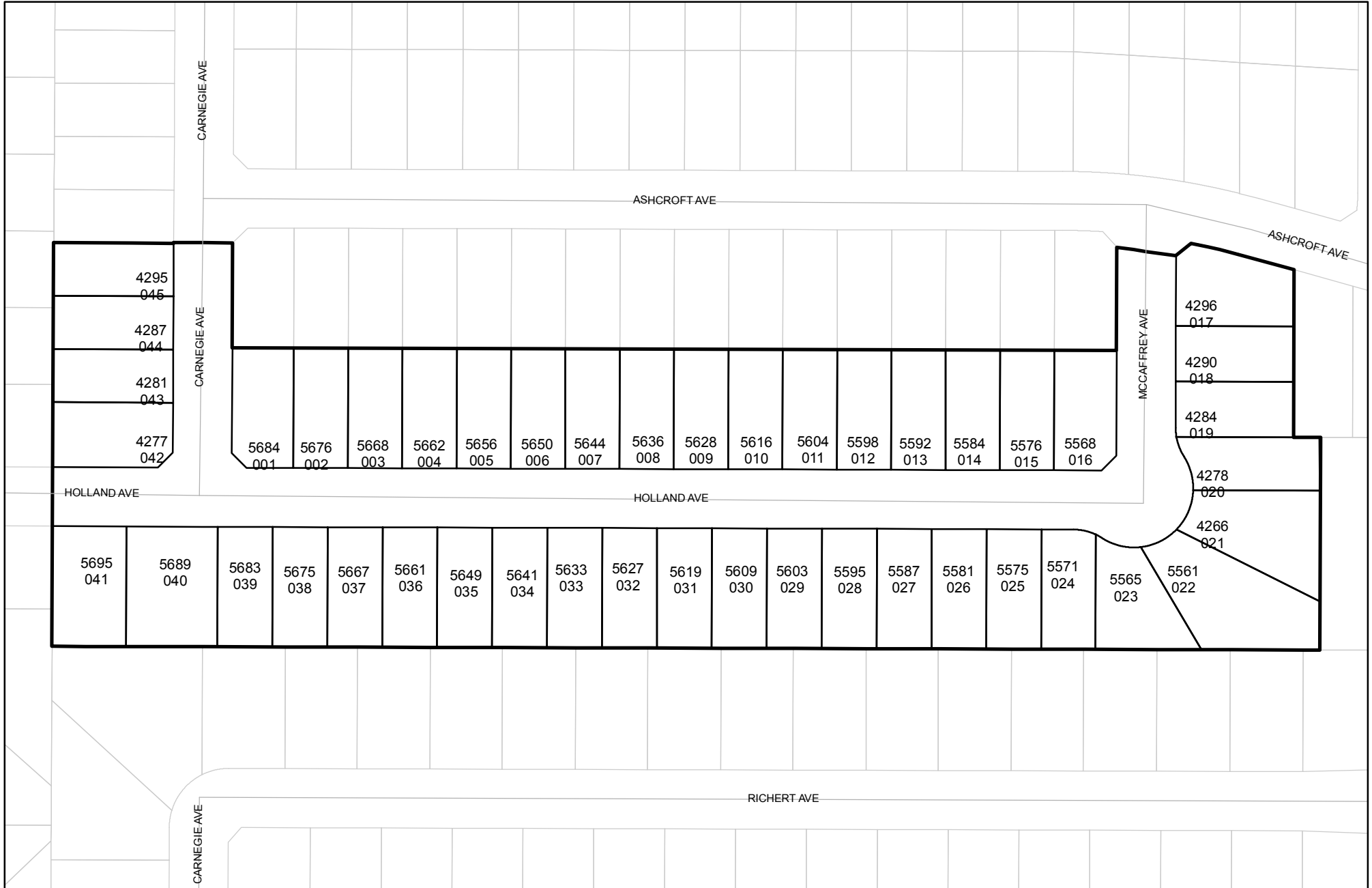




Prepared on Thu Feb 14 22:23:04 2019

# Street Names, Addresses and (Lot Numbers) for T5030



# MAP OF TRACT NO. 5030

PHASE IV OF TRACT NO. 4381  
A PLANNED DEVELOPMENT  
IN THE CITY OF FRESNO  
FRESNO COUNTY, CALIFORNIA  
SURVEYED AND PLATTED IN JULY, 2001  
BY EDWARD D. DUNKEL AND ASSOCIATES

CONSISTING OF TWO SHEETS  
SHEET 2 OF 2 SHEETS

### LEGEND

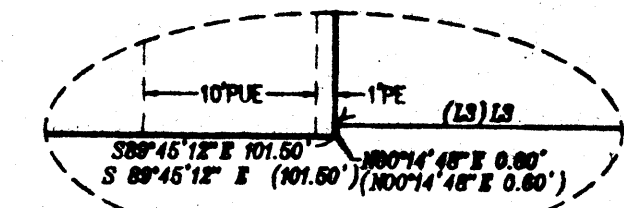
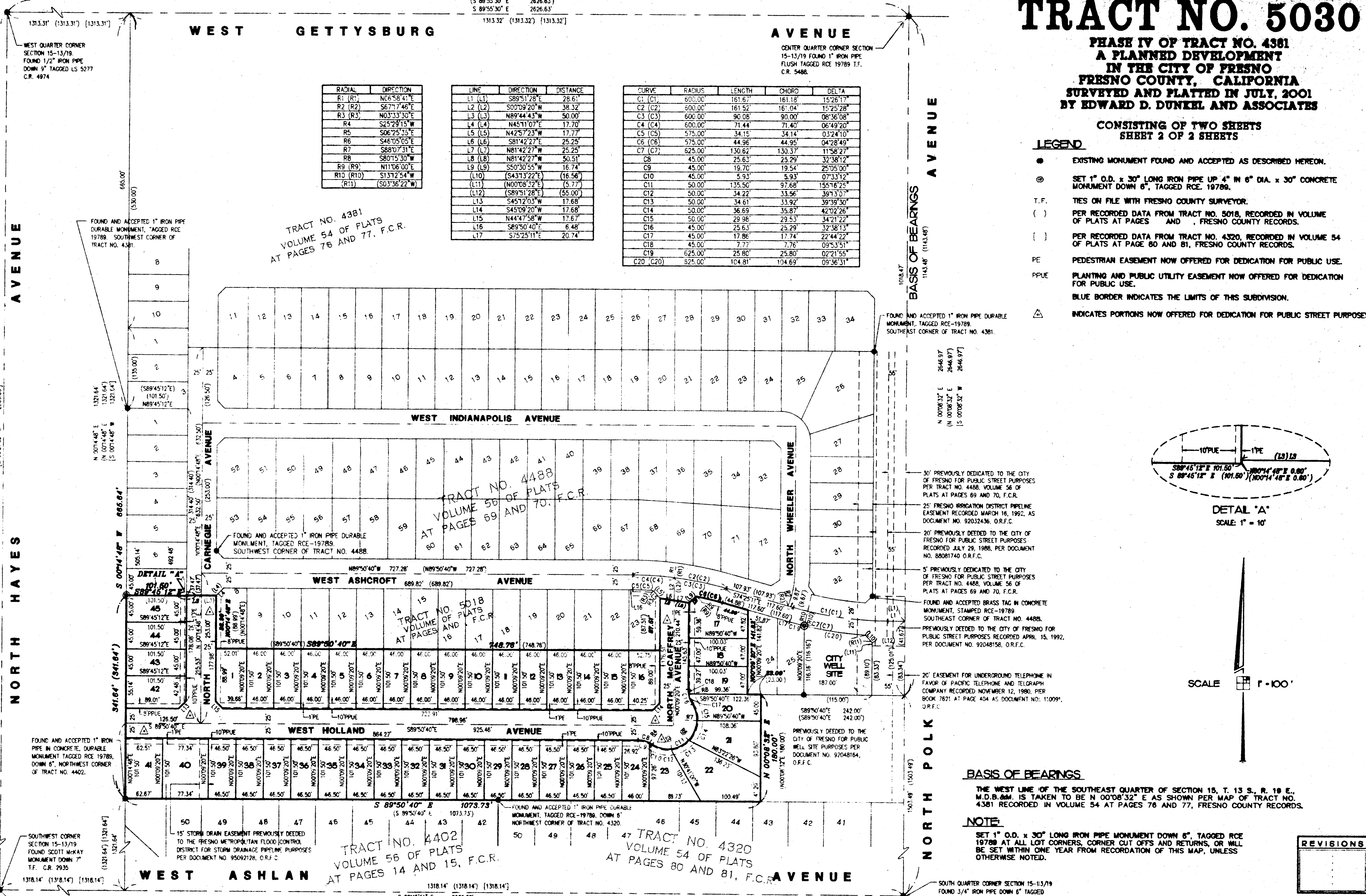
- EXISTING MONUMENT FOUND AND ACCEPTED AS DESCRIBED HEREON.
- ⊙ SET 1" O.D. x 30' LONG IRON PIPE UP 4" IN 6" DIA. x 30" CONCRETE MONUMENT DOWN 6", TAGGED RCE 19789.
- T.F. TIES ON FILE WITH FRESNO COUNTY SURVEYOR.
- ( ) PER RECORDED DATA FROM TRACT NO. 5018, RECORDED IN VOLUME OF PLATS AT PAGES AND , FRESNO COUNTY RECORDS.
- [ ] PER RECORDED DATA FROM TRACT NO. 4320, RECORDED IN VOLUME 54 OF PLATS AT PAGE 80 AND 81, FRESNO COUNTY RECORDS.
- PE PEDESTRIAN EASEMENT NOW OFFERED FOR DEDICATION FOR PUBLIC USE.
- PPUE PLANTING AND PUBLIC UTILITY EASEMENT NOW OFFERED FOR DEDICATION FOR PUBLIC USE.
- △ BLUE BORDER INDICATES THE LIMITS OF THIS SUBDIVISION.
- ◻ INDICATES PORTIONS NOW OFFERED FOR DEDICATION FOR PUBLIC STREET PURPOSES.

S 89°55'30" E	2626.83'
S 89°55'30" E	2626.83'
S 89°55'30" E	2626.63'

RADIAL	DIRECTION
R1 (R1)	N6°58'41"E
R2 (R2)	S67°17'46"E
R3 (R3)	N03°33'50"E
R4	S25°29'15"W
R5	S06°25'35"E
R6	S46°05'05"E
R7	S88°07'31"E
R8	S80°15'30"W
R9 (R9)	N11°06'00"E
R10 (R10)	S13°12'54"W
(R11)	(S03°36'22"W)

LINE	DIRECTION	DISTANCE
L1 (L1)	S89°51'28"E	28.61'
L2 (L2)	S00°09'20"W	38.32'
L3 (L3)	N89°44'43"W	50.00'
L4 (L4)	N45°11'07"E	17.70'
L5 (L5)	N42°57'23"W	17.77'
L6 (L6)	S81°42'27"E	25.25'
L7 (L7)	N81°42'27"W	25.25'
L8 (L8)	N81°42'27"W	50.51'
L9 (L9)	S50°30'55"W	16.74'
(L10)	(S43°13'22"E)	(16.56')
(L11)	(N00°08'32"E)	(5.77')
(L12)	(S89°51'28"E)	(55.00')
L13	S45°12'03"W	17.68'
L14	S45°09'20"W	17.68'
L15	N44°47'58"W	17.67'
L16	S89°50'40"E	6.48'
L17	S75°25'11"E	20.74'

CURVE	RADIUS	LENGTH	CHORD	DELTA
C1 (C1)	600.00'	161.67'	161.18'	15°26'17"
C2 (C2)	600.00'	161.52'	161.04'	15°25'28"
C3 (C3)	600.00'	90.08'	90.00'	08°36'08"
C4 (C4)	600.00'	71.44'	71.40'	06°49'20"
C5 (C5)	575.00'	34.15'	34.14'	03°24'10"
C6 (C6)	575.00'	44.96'	44.95'	04°28'49"
C7 (C7)	625.00'	130.62'	130.37'	11°58'27"
C8	45.00'	25.63'	25.29'	32°38'12"
C9	45.00'	19.70'	19.54'	25°05'00"
C10	45.00'	5.93'	5.93'	07°33'12"
C11	50.00'	135.50'	97.68'	155°16'25"
C12	50.00'	34.22'	33.56'	39°13'57"
C13	50.00'	34.61'	33.92'	39°39'30"
C14	50.00'	36.69'	35.87'	42°02'26"
C15	50.00'	29.98'	29.53'	34°21'22"
C16	45.00'	25.63'	25.29'	32°38'13"
C17	45.00'	17.86'	17.74'	22°44'22"
C18	45.00'	7.77'	7.76'	09°53'51"
C19	625.00'	25.80'	25.80'	02°21'55"
C20 (C20)	825.00'	104.81'	104.69'	09°36'31"



DETAIL 'A'  
SCALE: 1" = 10'

SCALE 1" = 100'

### BASIS OF BEARINGS

THE WEST LINE OF THE SOUTHEAST QUARTER OF SECTION 15, T. 13 S., R. 18 E., M.D.B. 60M. IS TAKEN TO BE N 00°08'32" E AS SHOWN PER MAP OF TRACT NO. 4381 RECORDED IN VOLUME 54 AT PAGES 76 AND 77, FRESNO COUNTY RECORDS.

### NOTE

SET 1" O.D. x 30' LONG IRON PIPE MONUMENT DOWN 6", TAGGED RCE 19789 AT ALL LOT CORNERS, CORNER CUT OFFS AND RETURNS, OR WILL BE SET WITHIN ONE YEAR FROM RECORDATION OF THIS MAP, UNLESS OTHERWISE NOTED.

### REVISIONS
