



Prepared on Mon Oct 22 16:07:02 2018

Street Names, Addresses and (Lot Numbers) for T5018



MAP OF TRACT NO. 5018

PHASE III OF TRACT NO. 4381
IN THE CITY OF FRESNO
FRESNO COUNTY, CALIFORNIA
SURVEYED AND PLATTED IN AUGUST, 1991
BY EDWARD D. DUNKEL AND ASSOCIATES

CONSISTING OF TWO SHEETS
SHEET 2 OF 2 SHEETS

LEGEND

- EXISTING MONUMENT FOUND AND ACCEPTED AS DESCRIBED HEREON.
- SET 1" O.D. x 30" LONG IRON PIPE UP 4" IN 6" DIA. x 30" CONCRETE MONUMENT DOWN 6", TAGGED RCE. 19789.
- T.F. TIES ON FILE WITH FRESNO COUNTY SURVEYOR.
- () PER RECORDED DATA FROM TRACT NO. 4488, RECORDED IN VOLUME 56 OF PLATS AT PAGES 69 AND 70, FRESNO COUNTY RECORDS.
- [] PER RECORDED DATA FROM TRACT NO. 4320, RECORDED IN VOLUME 54 OF PLATS AT PAGE 80 AND 81, FRESNO COUNTY RECORDS.
- PE PEDESTRIAN EASEMENT NOW OFFERED FOR DEDICATION FOR PUBLIC USE.
- PUF PUBLIC UTILITY EASEMENT NOW OFFERED FOR DEDICATION FOR PUBLIC USE.
- BLUE BORDER INDICATES THE LIMITS OF THIS SUBDIVISION.

(S 89°55'30" E 2628.03)
(S 89°55'30" E 2626.63)
(S 89°55'30" E 2626.63)
1313.32' (1313.32') [1313.32']

RADIAL	DIRECTION
R1 (R1)	N06°58'41"E
R2 (R2)	S87°17'46"E
R3 (R3)	N03°33'30"E
R4 (R4)	M11°06'00"E
R5 (R5)	S13°12'54"W
(R6)	(S03°36'22"W)

LINE	DIRECTION	DISTANCE
L1 (L1)	S89°51'28"E	28.61
L2 (L2)	S00°09'20"W	38.32
L3 (L3)	N89°44'43"W	50.00
L4 (L4)	N45°11'07"E	17.70
L5 (L5)	N42°57'23"W	17.77
L6 (L6)	S81°42'27"E	25.25
L7 (L7)	N81°42'27"W	25.25
L8 (L8)	N81°42'27"W	50.51
L9 (L9)	S50°30'55"W	16.74
(L10)	(S43°13'22"E)	(18.58)
(L11)	(N00°08'32"E)	(5.77)
(L12)	(S89°31'28"E)	(55.00)
L13	S89°50'40"E	6.48
L14	S75°25'11"E	20.74

CURVE	RADIUS	LENGTH	CHORD	DELTA
C1 (C1)	600.00	161.67	161.16	152°51'7"
C2 (C2)	600.00	161.52	161.04	152°52'28"
C3 (C3)	600.00	90.08	90.00	08°36'08"
C4 (C4)	600.00	71.44	71.40	06°49'20"
C5 (C5)	575.00	34.15	34.14	03°24'10"
C6 (C6)	575.00	44.96	44.95	04°28'49"
C7 (C7)	625.00	130.62	130.37	11°58'27"
C8	625.00	25.80	25.80	02°21'55"
C9 (C9)	625.00	104.82	104.69	09°38'32"

WEST QUARTER CORNER SECTION 15-13/19
FOUND 1/2" IRON PIPE
DOWN 9" TAGGED LS 5277
C.R. 4874

CENTER QUARTER CORNER SECTION 15-13/19
FOUND 1" IRON PIPE
FLUSH TAGGED RCE 19789 T.F.
C.R. 5488.

AVENUE

AVENUE

1018.47
BASIS OF BEARINGS
1143.48' (1143.48')

NORTH HAYES

NORTH POLK

SOUTHWEST CORNER SECTION 15-13/19
FOUND SCOTT MCKAY
MONUMENT DOWN 7"
T.F. C.R. 2935

FOUND AND ACCEPTED 1" IRON PIPE DURABLE
MONUMENT, TAGGED RCE-19789, DOWN 6"
NORTHWEST CORNER OF TRACT NO. 4320.

BASIS OF BEARINGS

THE WEST LINE OF THE SOUTHWEST QUARTER OF SECTION 15, T. 13 S., R. 19 E., M.D.B.&M. IS TAKEN TO BE N 00°08'32" E AS SHOWN PER MAP OF TRACT NO. 4381 RECORDED IN VOLUME 54 AT PAGES 76 AND 77, FRESNO COUNTY RECORDS.

NOTE

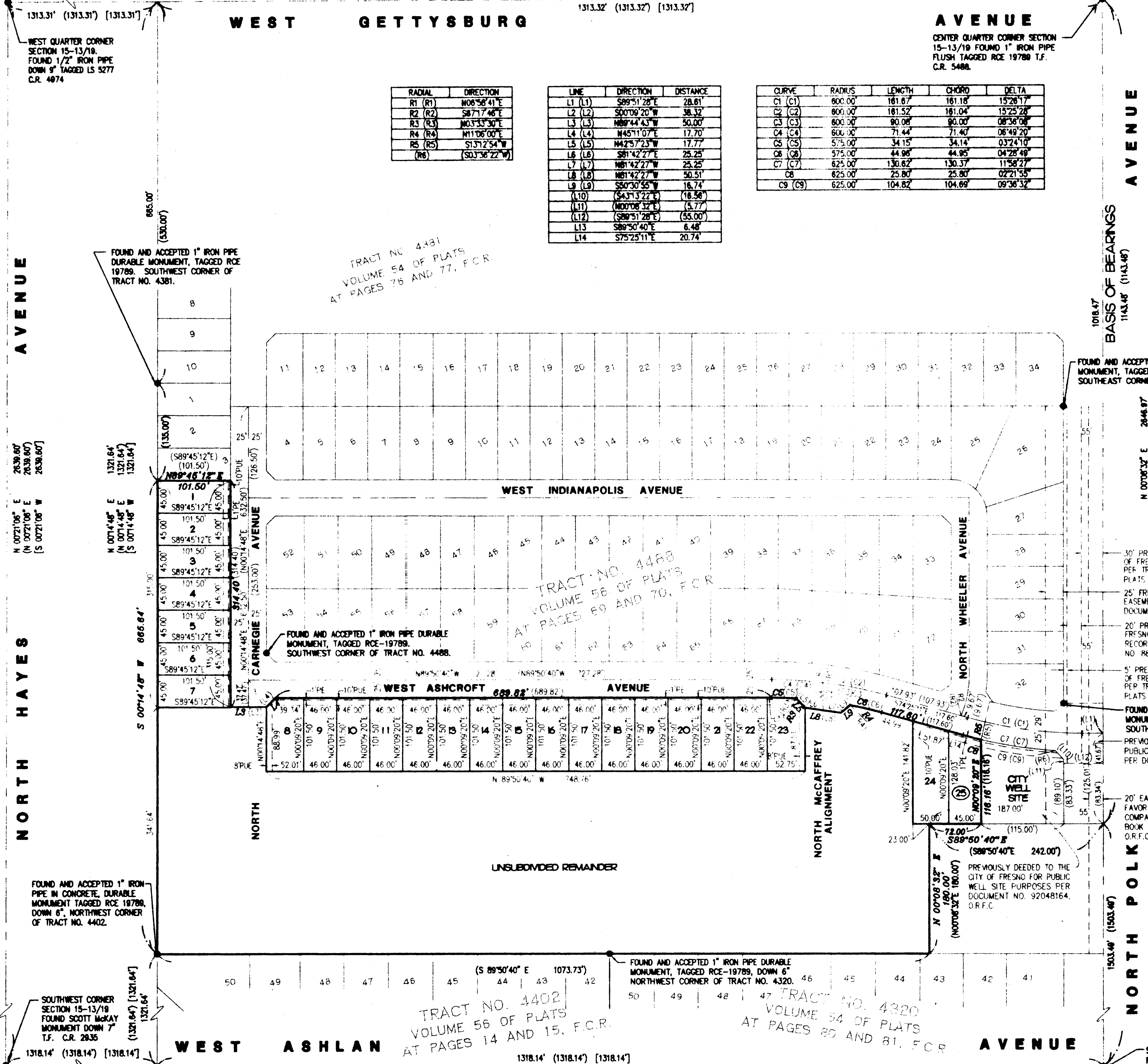
SET 1" O.D. x 30" LONG IRON PIPE MONUMENT DOWN 6", TAGGED RCE 19789 AT ALL LOT CORNERS, CORNER CUT OFFS AND RETURNS, OR WILL BE SET WITHIN ONE YEAR FROM RECORDATION OF THIS MAP, UNLESS OTHERWISE NOTED.

REVISIONS

NO.	DESCRIPTION

SOUTH QUARTER CORNER SECTION 15-13/19
FOUND 3/4" IRON PIPE DOWN 6" TAGGED
RCE 12389, T.F., C.R. 5488. MONUMENT
DESTROYED BY SEWER CONSTRUCTION, CORNER
NOW FALLS ON SEWER MANHOLE PER TIES ON FILE.

PC# 1 - HENSON - 05/02/01
DUNKEL CADFILE: 01031FM.DWG
C:\My Documents\01031FM.DWG 05/07/01 07:53:10 PM PM PLOT



TRACT NO. 4381
VOLUME 54 OF PLATS
AT PAGES 76 AND 77, F.C.R.

TRACT NO. 4488
VOLUME 56 OF PLATS
AT PAGES 69 AND 70, F.C.R.

TRACT NO. 4402
VOLUME 56 OF PLATS
AT PAGES 14 AND 15, F.C.R.

TRACT NO. 4320
VOLUME 54 OF PLATS
AT PAGES 80 AND 81, F.C.R.

UNSUBDIVDED REMAINDER

SCALE 1" = 100'