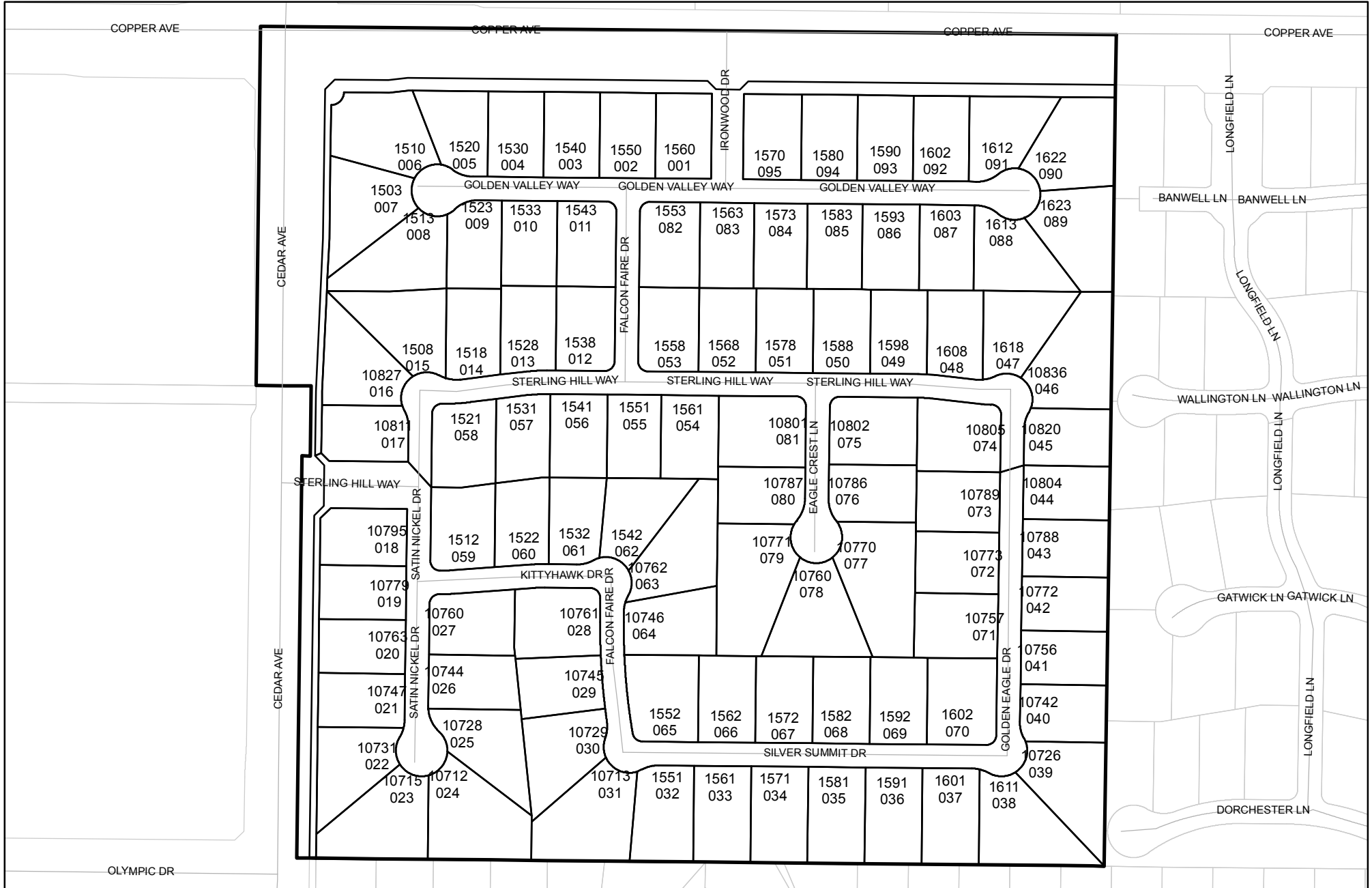




Prepared on Fri Jul 28 23:57:21 2017

# Street Names, Addresses and (Lot Numbers) for T5010



# TRACT NO. 5010

IN THE CITY OF FRESNO, COUNTY OF FRESNO, STATE OF CALIFORNIA  
SURVEYED AND PLATTED IN MAY 2002, BY GARY G. GIANNETTA

## SHEET TWO OF TWO SHEETS

### LEGEND:

- MONUMENT FOUND AND ACCEPTED AS NOTED
- SET 3/4" IRON PIPE, 30" LONG, 6" BELOW GROUND, TAGGED R.C.E. 26996
- ⊙ SET 3/4" IRON PIPE, 30" LONG, 4" UP IN 6" DIAMETER x 30" P.C.C. MONUMENT, DOWN 6" BELOW GROUND, TAGGED R.C.E. 26996
- ▲ NOW OFFERED FOR DEDICATION FOR PUBLIC STREET PURPOSES
- △ PACIFIC GAS AND ELECTRIC COMPANY EASEMENT GRANTED DECEMBER 7, 1989 AS DOC. NO. 89134882, F.C.R.
- △ PACIFIC GAS AND ELECTRIC COMPANY EASEMENT GRANTED DECEMBER 7, 1989 AS DOC. NO. 89134883, F.C.R.
- △ PREVIOUSLY DEDICATED BY GRANT DEED TO FRESNO METROPOLITAN FLOOD CONTROL DISTRICT FOR PIPELINE PURPOSES MARCH 15, 1995 AS DOC. NO. 95032392, F.C.R.
- ▲▲▲▲ INDICATES RELINQUISHMENT OF DIRECT ACCESS RIGHTS
- ( ) RECORD DATA AS PER TRACT NO. 4898, RECORDED IN VOLUME 63, PAGES 100 AND 101 OF PLATS, FRESNO COUNTY RECORDS
- (( )) RECORD DATA AS PER PARCEL MAP NO. 2673, RECORDED IN BOOK 17, PAGE 53 OF PARCEL MAPS, FRESNO COUNTY RECORDS
- [ ] RECORD DATA AS PER TRACT NO. 4897, RECORDED IN VOLUME 63, PAGES 97, 98 & 99 OF PLATS, FRESNO COUNTY RECORDS
- F.C.R. FRESNO COUNTY RECORDS
- PUE PUBLIC UTILITY EASEMENT NOW OFFERED FOR DEDICATION OF PUBLIC USE
- (CALC) CALCULATED FROM RECORD DATA
- (R) DENOTES RADIAL BEARING
- BLUE BORDER INDICATES THE LIMITS OF THIS SUBDIVISION

### NOTE:

1. SET 3/4" IRON PIPE, 6" DOWN, TAGGED RCE 26996 AT ALL LOT CORNERS.
2. OUTLOT "A" FOR PRIVATE STREET, INGRESS AND EGRESS, PRIVATE LANDSCAPE, DRAINAGE AND PARKING PURPOSES.
3. OUTLOT "A" NOW OFFERED FOR DEDICATION FOR PUBLIC UTILITY PURPOSES.

LINE	DIRECTION	DISTANCE
L1	N 00°04'20" E	3.70
L2	N 89°44'51" W	35.00
L3	N 82°20'47" E	89.93
L4	N 89°55'40" W	25.06
L5	N 89°55'40" W	35.00
L6	N 85°19'42" E	124.02
L7	N 89°55'40" W	105.99
L8	N 00°04'20" E	71.80
L9	N 89°44'51" W	9.07
L10	N 45°15'09" E	21.21
L11	N 45°15'09" E	22.83
L12	N 00°15'09" E	32.00
L13	N 00°15'09" E	32.00
L14	N 44°44'51" W	21.21
L15	N 44°44'51" W	20.00
L16	N 45°09'45" E	21.25
L17	N 44°50'40" W	18.46
L18	N 89°55'40" W	18.74
L19	N 89°55'40" W	18.69
L20	N 45°04'20" E	18.49
L21	N 00°15'09" E	91.48

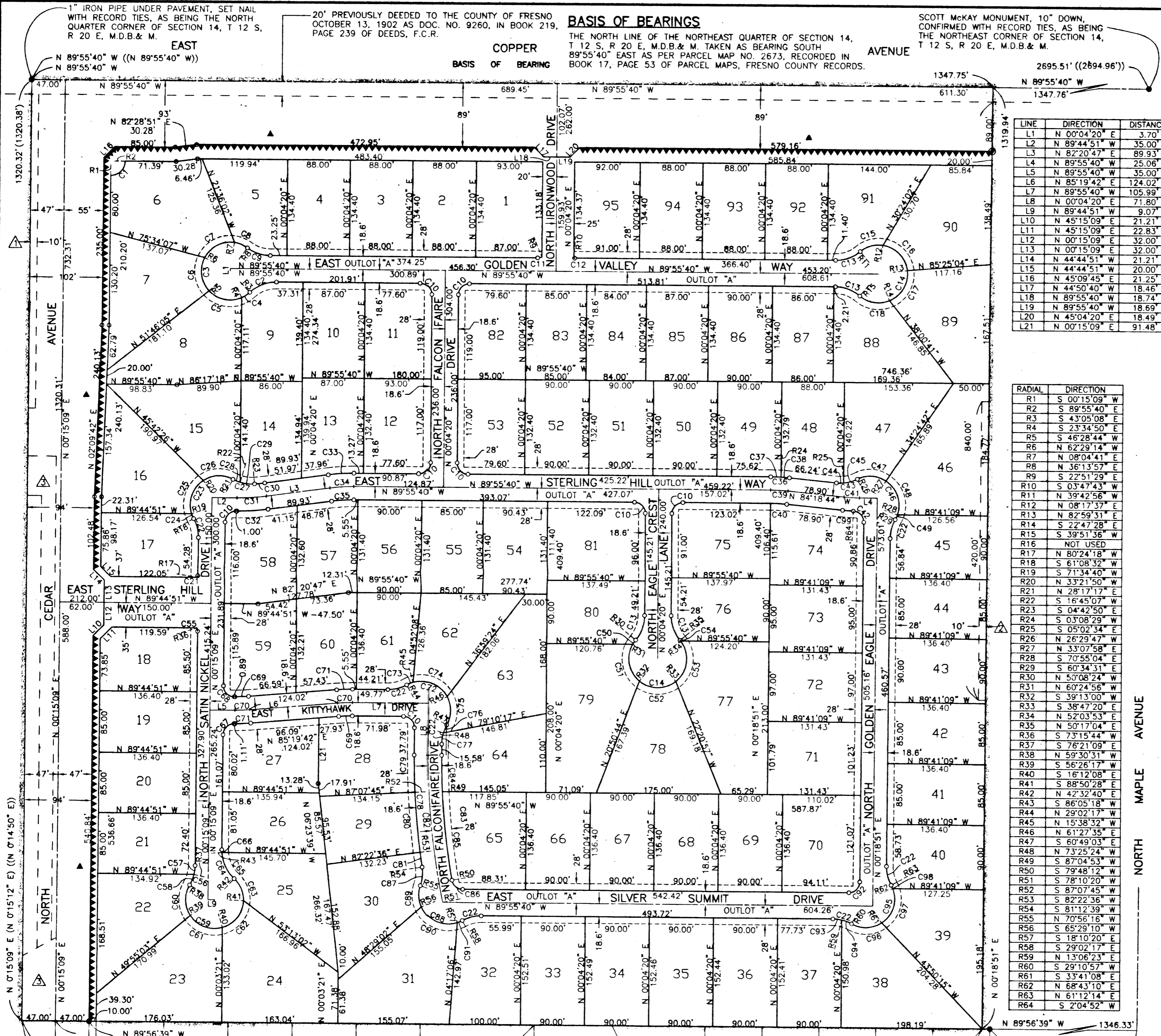
RADIAL	DIRECTION
R1	S 00°15'09" W
R2	S 89°55'40" E
R3	S 43°05'08" E
R4	S 23°34'50" E
R5	S 46°28'44" W
R6	N 62°29'14" W
R7	N 08°04'41" E
R8	N 36°13'57" E
R9	S 22°51'29" E
R10	S 03°47'43" W
R11	N 39°42'56" W
R12	N 08°17'37" E
R13	N 82°59'31" E
R14	S 22°47'28" E
R15	S 39°51'36" W
R16	NOT USED
R17	N 80°24'18" W
R18	S 70°55'04" E
R19	S 60°34'31" E
R20	N 50°08'24" W
R21	N 28°17'17" E
R22	S 16°45'07" W
R23	S 04°42'50" E
R24	S 03°08'29" W
R25	S 05°02'34" E
R26	N 26°29'47" W
R27	N 33°07'58" E
R28	S 70°55'04" E
R29	S 60°34'31" E
R30	N 50°08'24" W
R31	N 60°24'56" W
R32	S 39°13'00" W
R33	S 38°47'20" E
R34	N 52°03'53" E
R35	N 50°17'04" E
R36	S 73°15'44" W
R37	S 76°21'09" E
R38	N 59°30'31" W
R39	S 56°26'17" W
R40	S 16°12'08" E
R41	S 88°50'28" E
R42	N 42°32'40" E
R43	S 86°05'18" W
R44	N 29°02'17" W
R45	N 15°38'32" W
R46	N 61°27'35" E
R47	S 60°49'03" E
R48	N 73°25'24" W
R49	S 87°04'53" W
R50	S 79°48'12" W
R51	S 78°10'20" W
R52	N 89°07'45" W
R53	S 82°22'36" W
R54	S 81°12'39" W
R55	N 70°58'16" W
R56	S 65°29'10" W
R57	S 18°10'20" E
R58	S 29°02'17" E
R59	N 13°06'23" E
R60	S 29°10'57" W
R61	S 33°41'08" E
R62	N 68°43'10" E
R63	N 61°12'14" E
R64	S 2°04'52" W

SCALE: 1" = 100'

NORTH MAPLE AVENUE

CURVE	RADIUS	LENGTH	TANGENT	DELTA
C1	20.00	31.48	20.06	90°10'49"
C2	54.40	40.98	21.52	43°09'28"
C3	40.60	183.75	48.97	259°19'05"
C4	40.60	13.82	6.97	19°30'18"
C5	40.60	49.64	28.46	70°03'34"
C6	40.60	50.33	28.98	71°02'02"
C7	40.60	50.00	28.73	70°33'55"
C8	54.40	19.95	10.18	28°09'16"
C9	54.40	34.33	17.76	36°09'37"
C10	40.60	24.19	15.40	90°00'00"
C11	15.40	6.16	3.12	22°55'49"
C12	15.40	1.00	0.50	03°43'23"
C13	54.40	37.78	19.69	39°47'16"
C14	40.60	183.94	48.75	259°34'32"
C15	40.60	34.02	18.08	48°00'33"
C16	40.60	52.93	30.98	74°41'54"
C17	40.60	52.59	30.71	74°13'01"
C18	40.60	44.39	24.71	62°39'04"
C19	NOT USED			
C20	NOT USED			
C21	15.40	2.51	1.26	09°20'34"
C22	54.40	27.64	14.12	29°06'37"
C23	40.60	104.27	137.71	147°08'45"
C24	40.60	7.39	3.71	10°26'08"
C25	40.60	53.19	31.19	75°03'30"
C26	40.60	43.69	24.23	61°39'07"
C27	54.40	31.33	16.12	33°00'07"
C28	54.40	10.95	5.50	11°32'10"
C29	54.40	20.38	10.31	21°27'57"
C30	281.40	14.44	7.22	02°56'23"
C31	300.00	41.40	20.73	07°54'22"
C32	318.60	43.96	22.02	07°54'22"
C33	268.60	36.22	18.14	07°43'33"
C34	250.00	33.71	16.88	07°43'33"
C35	231.40	31.20	15.62	07°43'33"
C36	268.60	26.32	13.17	05°36'56"
C37	268.60	14.39	7.20	03°04'09"
C38	268.60	11.94	5.97	02°32'47"
C39	250.00	24.50	12.26	05°36'56"
C40	231.40	22.68	11.35	05°36'56"
C41	225.00	22.05	11.03	05°36'56"
C42	15.40	23.72	14.93	88°13'50"

CURVE	RADIUS	LENGTH	TANGENT	DELTA
C50	40.60	7.28	3.65	10°16'32"
C51	40.60	56.95	34.29	80°22'04"
C52	40.60	55.28	32.88	78°00'20"
C53	40.60	63.17	40.00	89°08'47"
C54	40.60	1.26	0.63	01°46'49"
C55	15.40	4.57	2.30	16°59'25"
C56	54.40	28.71	14.70	30°14'20"
C57	54.40	12.72	6.39	13°23'42"
C58	54.40	15.99	8.05	16°50'38"
C59	40.60	182.78	50.18	257°56'49"
C60	40.60	45.39	25.40	64°03'12"
C61	40.60	51.47	29.85	72°38'25"
C62	40.60	51.47	29.84	72°38'25"
C63	40.60	34.45	18.34	48°36'52"
C64	54.40	45.30	24.05	47°42'29"
C65	54.40	41.34	21.73	43°32'38"
C66	54.40	3.95	1.98	04°09'51"
C67	15.40	24.14	15.35	89°49'11"
C68	15.40	24.24	15.45	90°10'49"
C69	231.40	19.16	9.59	04°44'38"
C70	250.00	20.70	10.36	04°44'38"
C71	268.60	22.24	11.13	04°44'38"
C72	40.60	105.03	142.63	148°13'14"
C73	40.60	9.49	4.77	13°23'45"
C74	40.60	54.63	32.35	77°06'07"
C75	40.60	40.90	22.38	57°43'22"
C76	54.40	11.97	6.01	12°36'21"
C77	54.40	15.67	7.89	16°30'16"
C78	1018.60	157.54	78.93	08°51'41"
C79	1018.60	52.32	26.17	02°56'35"
C80	1018.60	84.49	42.27	04°45'09"
C81	1018.60	20.73	10.36	01°09'57"
C82	1000.00	207.69	104.22	11°54'00"
C83	981.40	175.89	88.18	10°16'08"
C84	981.40	51.23	25.62	02°59'27"
C85	981.40	124.66	62.42	07°16'41"
C86	15.40	21.43	12.86	79°43'52"
C87	54.40	26.44	13.49	27°51'05"
C88	40.60	97.86	106.04	136°06'01"
C89	40.60	30.88	16.23	43°34'34"
C90	40.60	59.28	36.34	83°39'30"



1" IRON PIPE UNDER PAVEMENT, SET NAIL WITH RECORD TIES, AS BEING THE NORTH QUARTER CORNER OF SECTION 14, T 12 S, R 20 E, M.D.B. & M.

20' PREVIOUSLY DEEDED TO THE COUNTY OF FRESNO OCTOBER 13, 1902 AS DOC. NO. 9260, IN BOOK 219, PAGE 239 OF DEEDS, F.C.R.

**BASIS OF BEARINGS**  
THE NORTH LINE OF THE NORTHEAST QUARTER OF SECTION 14, T 12 S, R 20 E, M.D.B. & M. TAKEN AS BEARING SOUTH 89°55'40" EAST AS PER PARCEL MAP NO. 2673, RECORDED IN BOOK 17, PAGE 53 OF PARCEL MAPS, FRESNO COUNTY RECORDS.

SCOTT MCKAY MONUMENT, 10" DOWN, CONFIRMED WITH RECORD TIES, AS BEING THE NORTHEAST CORNER OF SECTION 14, T 12 S, R 20 E, M.D.B. & M.