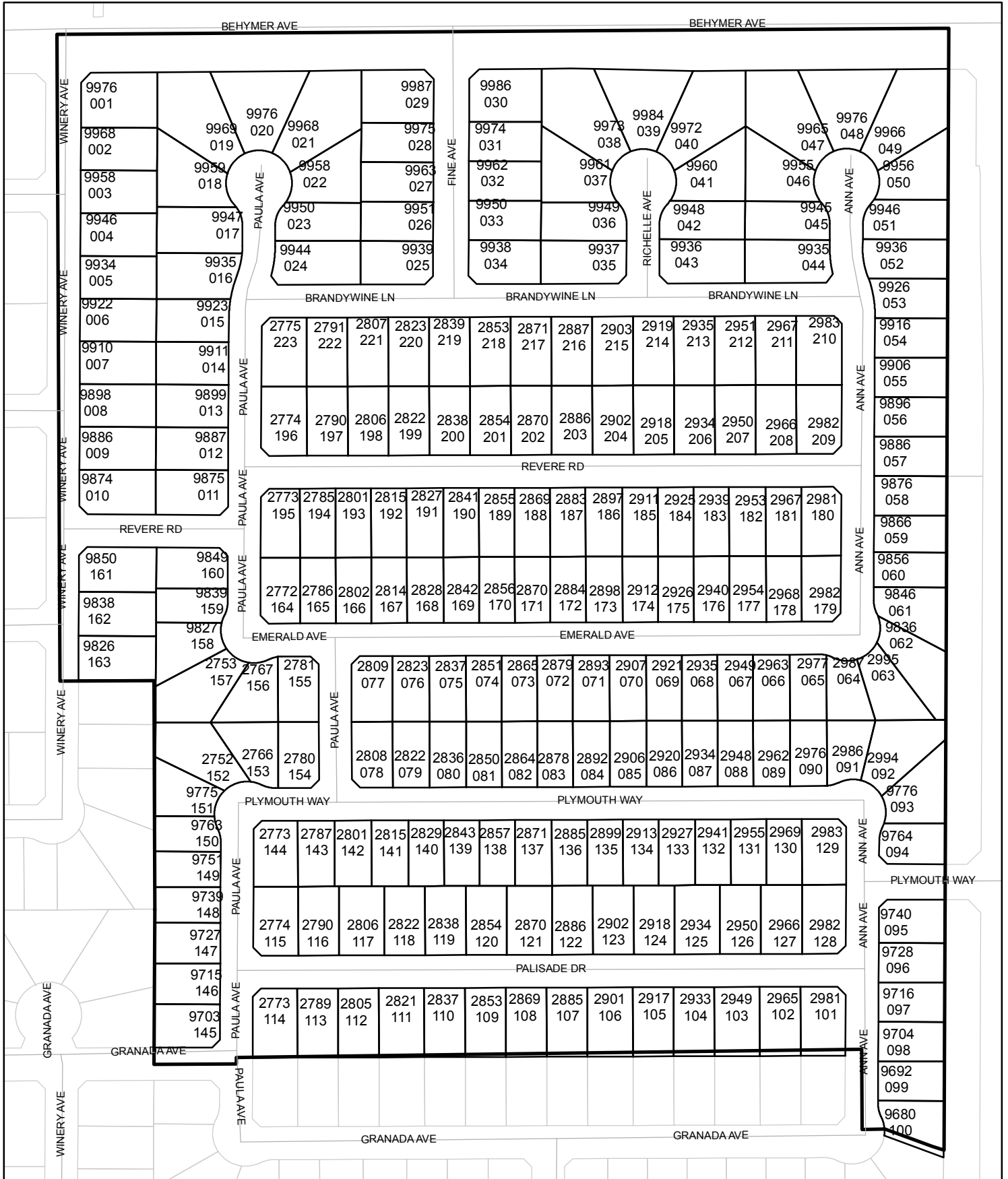




Street Names, Addresses and (Lot Numbers) for T5007

Prepared on Wed Jun 13 22:26:20 2018



MAP OF TRACT NO. 5007

PHASE I OF TENTATIVE TRACT NO. 5007
 [WITH 98 PLANNED DEVELOPMENT LOTS]
 IN THE CITY OF FRESNO
 FRESNO COUNTY, CALIFORNIA
 SURVEYED AND PLATTED IN APRIL, 2002
 BY DUNKEL ASSOCIATES

CONSISTING OF FIVE SHEETS
 SHEET 3 OF 5 SHEETS

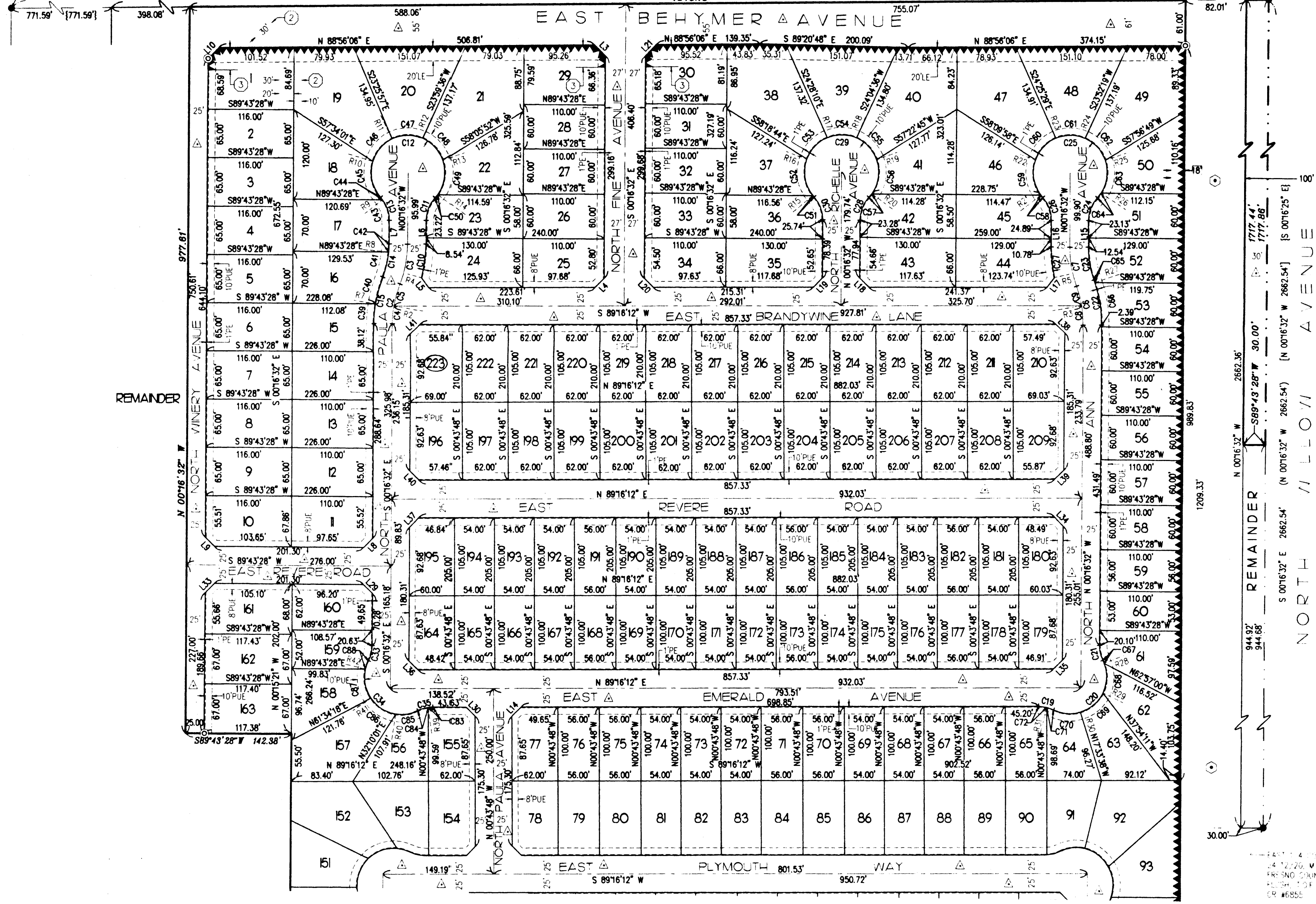
SEE SHEET TWO FOR BASIS
 OF BEARINGS AND LEGEND

SEE SHEET FIVE FOR CURVE,
 LINE AND RADIAL TABLES

NORTH 1/4 CORNER OF SECTION
 24 12/20, M.D.B. & M., FOUND
 3/4" I.P., FLUSH, TAGGED LS 6619

NORTHEAST CORNER OF SECTION
 24 12/20, M.D.B. & M., FOUND
 FRESNO COUNTY BRASS CAP
 FLUSH, T.O.F.
 CR #6856

N 88°56'06" E 2624.81' (N 88°56'06" E 2624.81') [N 88°56'05" E 2624.80'] [N 88°56'16" E 2624.82']
 1741.21' 1343.13'



SCALE 1" = 100'

REVISIONS	
01/08/02	RE
08/02/02	RE

BY: ESPINOZA - 04/25/02
 DUNKEL CADFILE: 0002FM

MAP OF TRACT NO. 5007

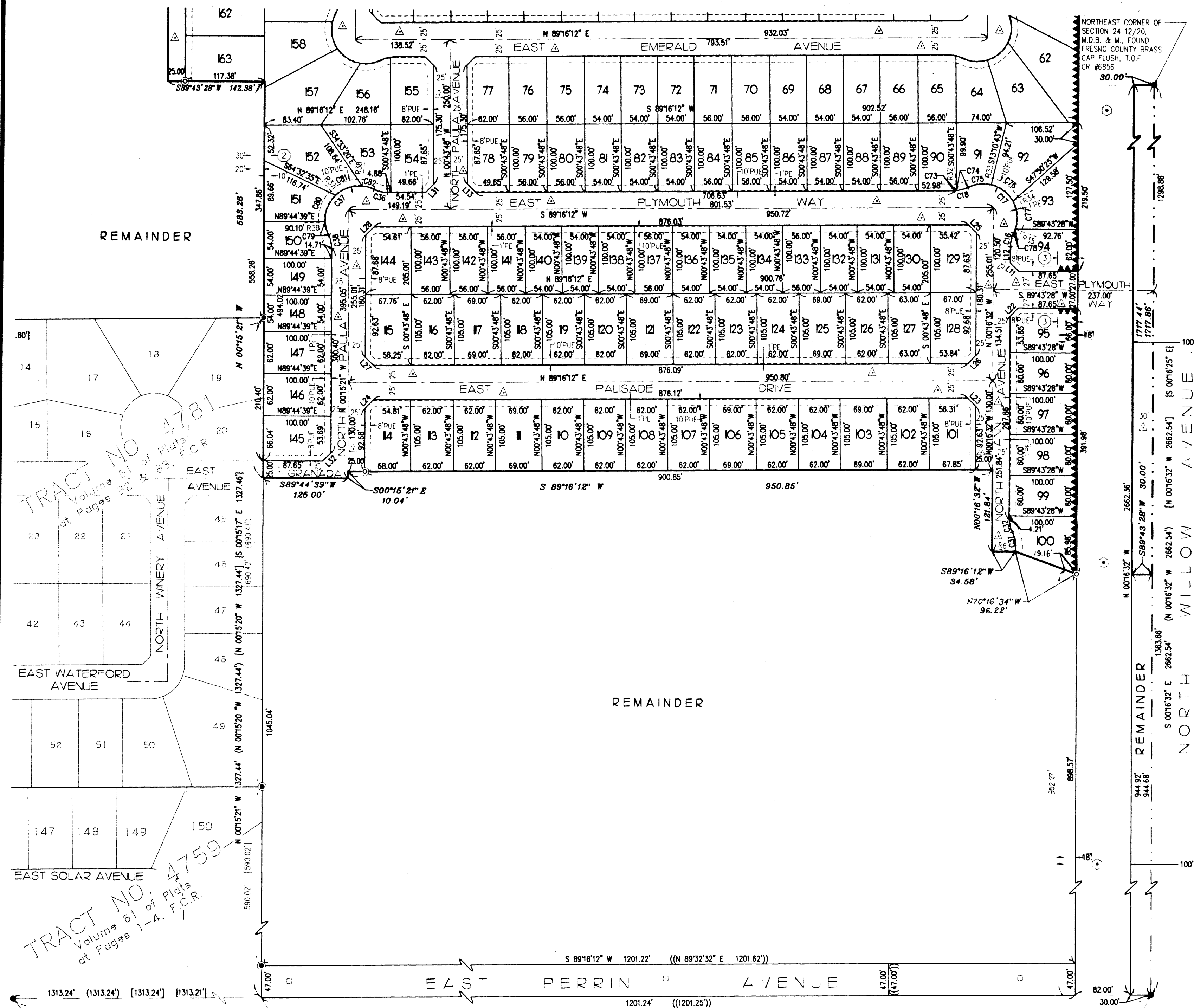
PHASE I OF TENTATIVE TRACT NO. 5007
[WITH 98 PLANNED DEVELOPMENT LOTS]

IN THE CITY OF FRESNO
FRESNO COUNTY, CALIFORNIA
SURVEYED AND PLATTED IN APRIL, 2002
BY DUNKEL ASSOCIATES

CONSISTING OF FIVE SHEETS
SHEET 4 OF 5 SHEETS

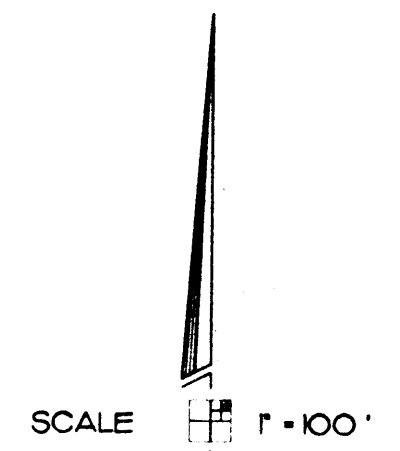
SEE SHEET TWO FOR BASIS
OF BEARINGS AND LEGEND

SEE SHEET FIVE FOR CURVE,
LINE AND RADIAL TABLES



NORTHEAST CORNER OF SECTION 24 12/20, M.D.B. & M., FOUND FRESNO COUNTY BRASS CAP FLUSH, T.O.F. CR #6856

EAST 1/4 CORNER OF SECTION 24 12/20, M.D.B. & M., FOUND FRESNO COUNTY BRASS CAP FLUSH, T.O.F. CR #6855



REVISIONS	
07/08/02	RE
08/02/02	RE

BY: ESPINOZA - 04/25/02
DUNKEL CADFILE: 00012FM

TRACT NO. 4781
Volume 81 of Plats
at Pages 32 & 33, F.C.R.

TRACT NO. 4759
Volume 61 of Plats
at Pages 1-4, F.C.R.

REMAINDER

REMAINDER

POSITION FOR THE SOUTHWEST CORNER OF THE SOUTHEAST 1/4 OF THE NORTHEAST 1/4 OF SECTION 24 12/20

CENTER 1/4 CORNER OF SECTION 24 12/20, M.D.B. & M., FOUND 3/4" I.P., FLUSH, TAGGED RCE 19789