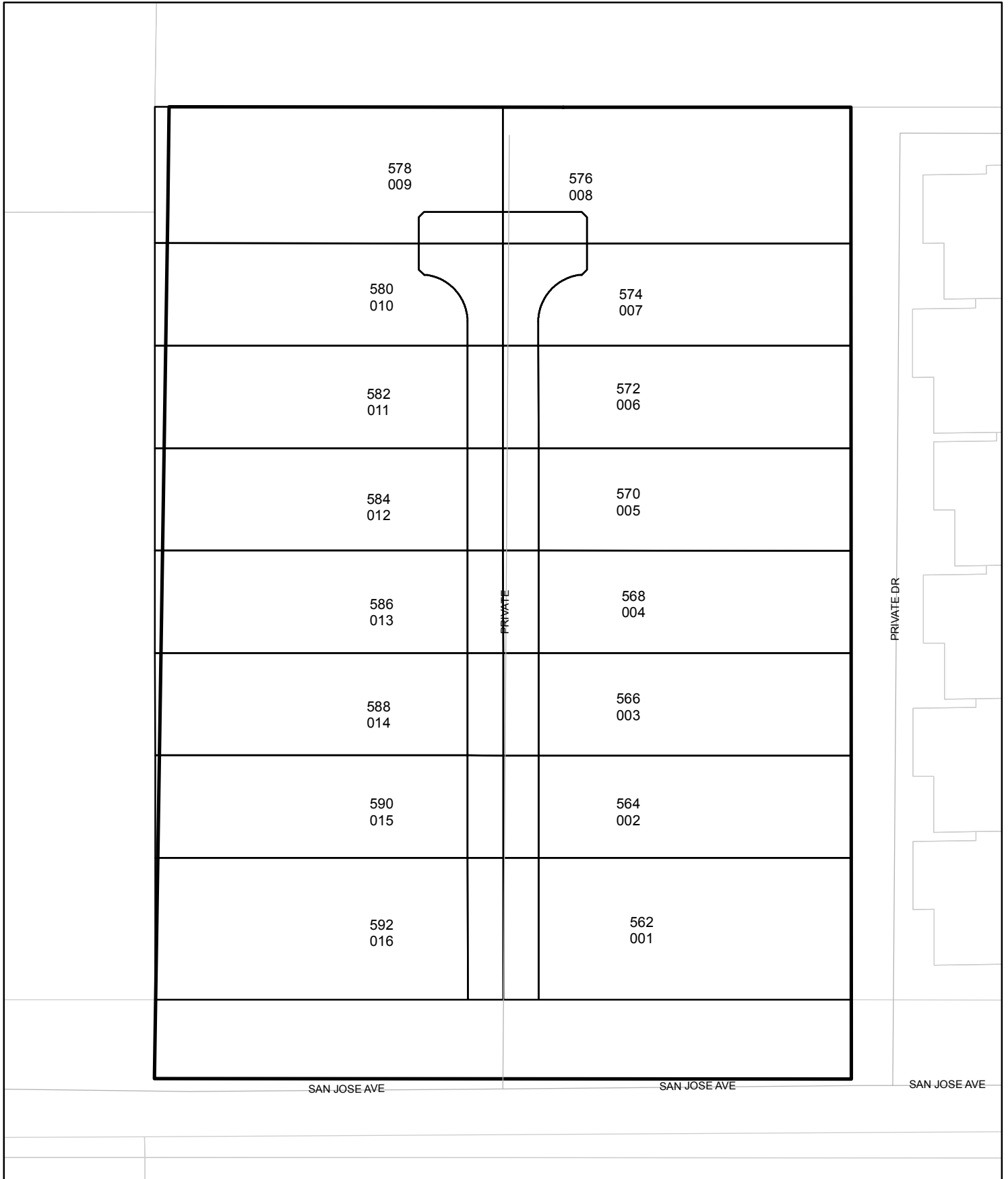




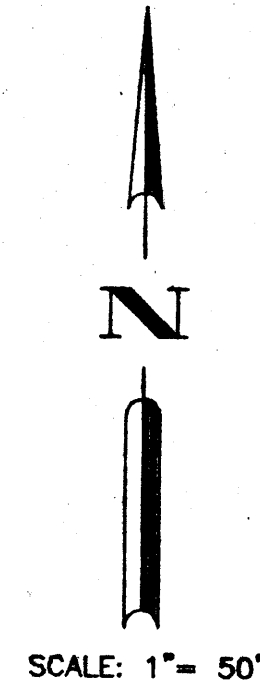
Street Names, Addresses and (Lot Numbers) for T4997

Prepared on Mon Oct 22 16:09:33 2018



TRACT NO. 4997

A PLANNED UNIT DEVELOPMENT
 IN THE CITY OF FRESNO, FRESNO COUNTY, CALIFORNIA
 SURVEYED AND PLATTED BY HARBOUR & ASSOCIATES
 IN AUGUST, 2001
 CONSISTING OF 2 SHEETS
 SHEET 2 OF 2



LEGEND:

- FOUND AND ACCEPTED MONUMENT AS DESCRIBED HEREON
 - ⊙ SET 3/4" X 30" IRON PIPE, UP 4" IN 6" PCC MONUMENT, DOWN 6", TAGGED LS 5277.
 - () INDICATES RECORD DATA AS SHOWN ON TRACT NO. 2548, RECORDED IN VOLUME 28 OF PLATS AT PAGE 69, FRESNO COUNTY RECORDS.
 - < > INDICATES RECORD DATA AS SHOWN ON PARCEL MAP NO. 83-17 RECORDED IN BOOK 41 OF PARCEL MAPS AT PAGES 26 AND 27, FRESNO COUNTY RECORDS.
 - CPF REFERS TO CALIFORNIA POULTRY FARM RECORDED IN BOOK 2 OF RECORD OF SURVEYS AT PAGE 82, FRESNO COUNTY RECORDS.
 - PUE INDICATES PUBLIC UTILITY EASEMENT NOW OFFERED FOR DEDICATION FOR PUBLIC USE.
 - PE INDICATES PUBLIC PEDESTRIAN EASEMENT NOW OFFERED FOR DEDICATION FOR PUBLIC USE.
 - ⚠ INDICATES PREVIOUSLY DEDICATED FOR PUBLIC STREET PURPOSES AS INDICATED HEREON.
 - ⚠ INDICATES NOW OFFERED FOR DEDICATION FOR PUBLIC STREET PURPOSES.
- THE SHADED BLUE BORDER INDICATES THE LIMITS OF THIS SUBDIVISION.

NOTE:

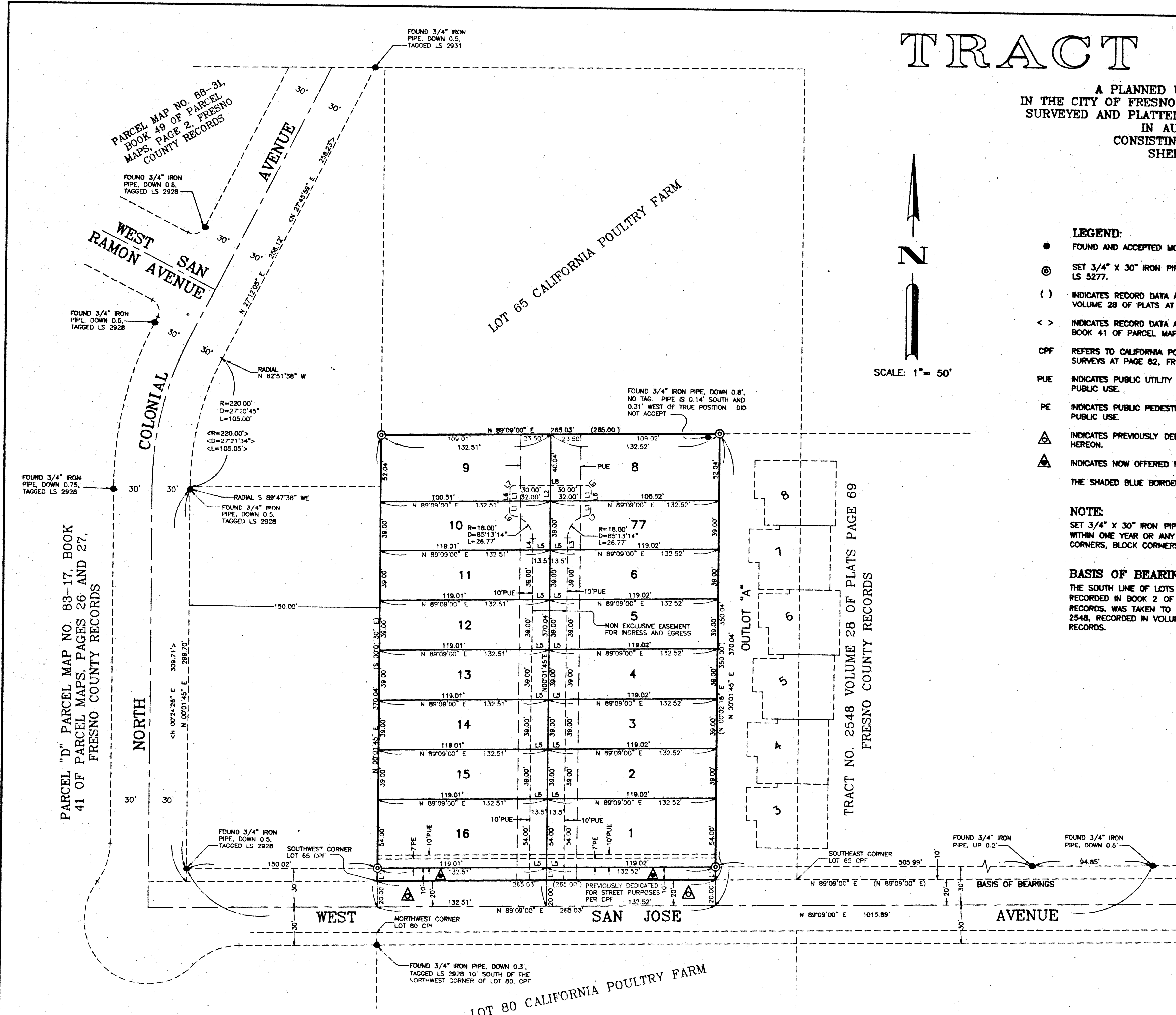
SET 3/4" X 30" IRON PIPE, DOWN 0.5", TAGGED LS 5277, OR WILL BE SET WITHIN ONE YEAR OR ANY APPROVED EXTENSION THEREOF, FOR ALL LOT CORNERS, BLOCK CORNERS, AND THE BEGINNING AND ENDING OF ALL CURVES.

BASIS OF BEARINGS:

THE SOUTH LINE OF LOTS 65, 66 AND 67 OF CALIFORNIA POULTRY FARM RECORDED IN BOOK 2 OF RECORD OF SURVEYS AT PAGE 82, FRESNO COUNTY RECORDS, WAS TAKEN TO BE NORTH 89°09'00" EAST, AS SHOWN ON TRACT NO. 2548, RECORDED IN VOLUME 28 OF PLATS AT PAGE 69, FRESNO COUNTY RECORDS.

LINE DATA:

LINE NUMBER	BEARING	DISTANCE
L 1	N 00°01'45" E	10.00'
L 2	N 00°01'45" E	12.00'
L 3	N 00°01'45" E	9.31'
L 4	N 00°01'45" E	8.81'
L 5	N 89°09'00" E	13.50'
L 6	N 00°01'45" E	20.00'
L 7	N 44°35'22" E	2.85'
L 8	N 89°09'00" E	60.01'
L 9	S 45°24'38" E	2.81'



PARCEL "D" PARCEL MAP NO. 83-17, BOOK 41 OF PARCEL MAPS, PAGES 26 AND 27, FRESNO COUNTY RECORDS

LOT 65 CALIFORNIA POULTRY FARM

TRACT NO. 2548 VOLUME 28 OF PLATS PAGE 69 FRESNO COUNTY RECORDS

LOT 80 CALIFORNIA POULTRY FARM

Harbour & Associates
 Civil Engineers
 375 Woodworth Avenue, Suite 103 • Clovis, California 93612
 (559) 325-7876 • Fax: (559) 325-7869 • e-mail: ha.ce@men.com