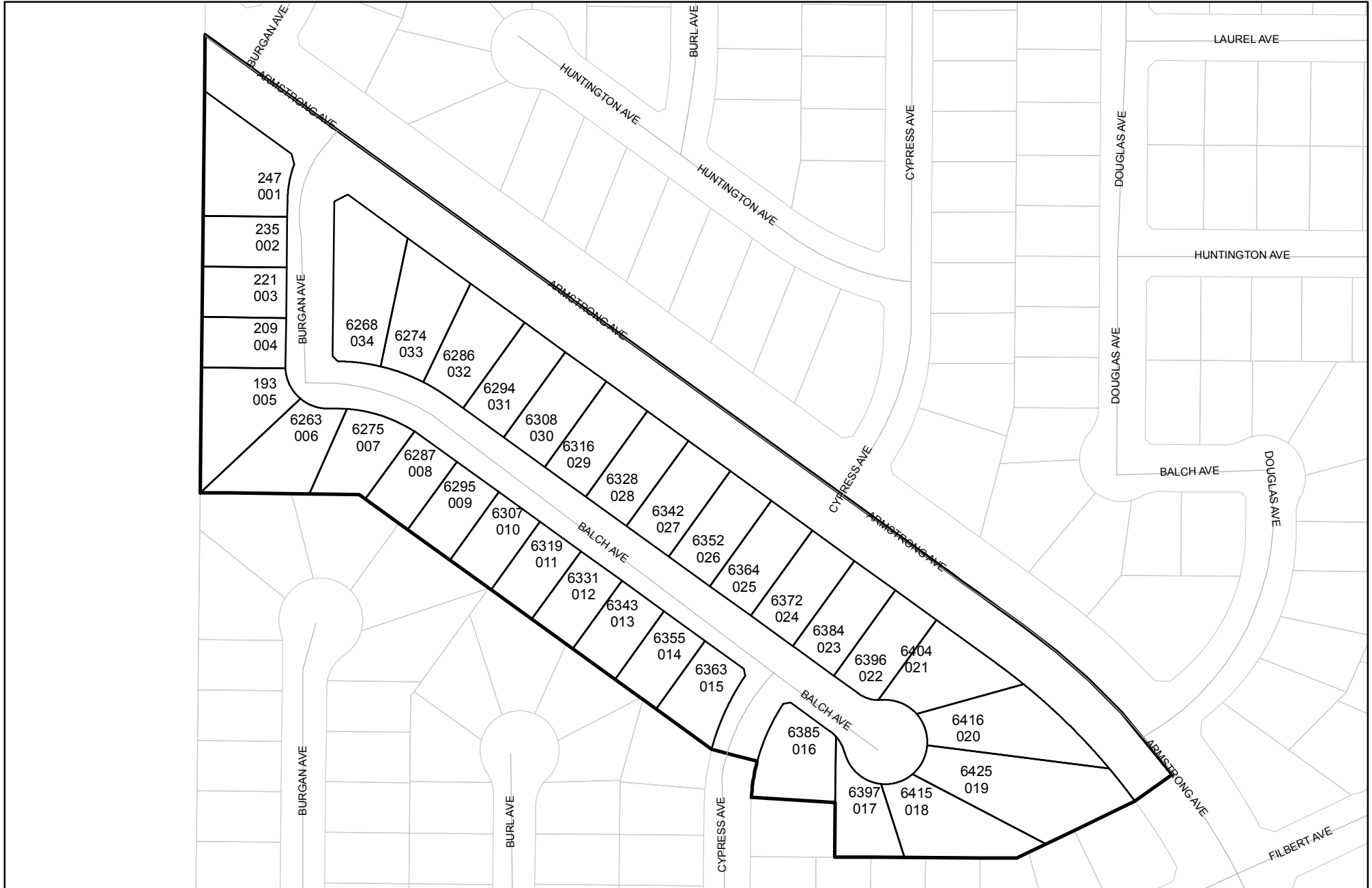




Prepared on Tue Jun 06 23:40:25 2017

# Street Names, Addresses and (Lot Numbers) for T4995



# TRACT No. 4995

IN THE CITY OF FRESNO  
 FRESNO COUNTY, CALIFORNIA  
 SURVEYED AND PLATTED IN JANUARY, 2001  
 BY YAMABE & HORN ENGINEERING, INC.  
 CONSISTING OF 3 SHEETS  
 SHEET 2 OF 3

### LEGEND

- FOUND 3/4" IRON PIPE, DOWN 0.5', TAGGED "RCE 26996", UNLESS OTHERWISE NOTED
- FOUND CITY DURABLE MONUMENT PER TRACT No. 4677
- ▲ PREVIOUSLY DEDICATED PER DOCUMENT No. 96075062, RECORDED JUNE 12, 1996, ORFC
- ▼ NOW OFFERED FOR DEDICATION FOR PUBLIC STREET AND UTILITY PURPOSES
- ══ INDICATES RELINQUISHMENT OF DIRECT VEHICULAR ACCESS RIGHTS
- FD FOUND
- ORFC OFFICIAL RECORDS FRESNO COUNTY
- F.C.R. FRESNO COUNTY RECORDS
- LE LANDSCAPE EASEMENT
- PUE PUBLIC UTILITY EASEMENT
- BCM BRASS CAP MONUMENT
- ( ) DATA PER TRACT No. 4677, RECORDED IN VOLUME 59 OF PLATS AT PAGES 76 & 77, F.C.R.
- [ ] DATA PER TRACT No. 4706, RECORDED IN VOLUME 62 OF PLATS AT PAGES 11 & 12, F.C.R.
- { } DATA PER PARCEL MAP No. 5387, RECORDED IN BOOK 36 OF PARCEL MAPS AT PAGE 66, F.C.R.

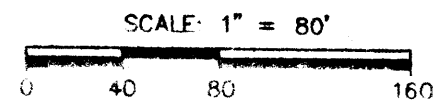
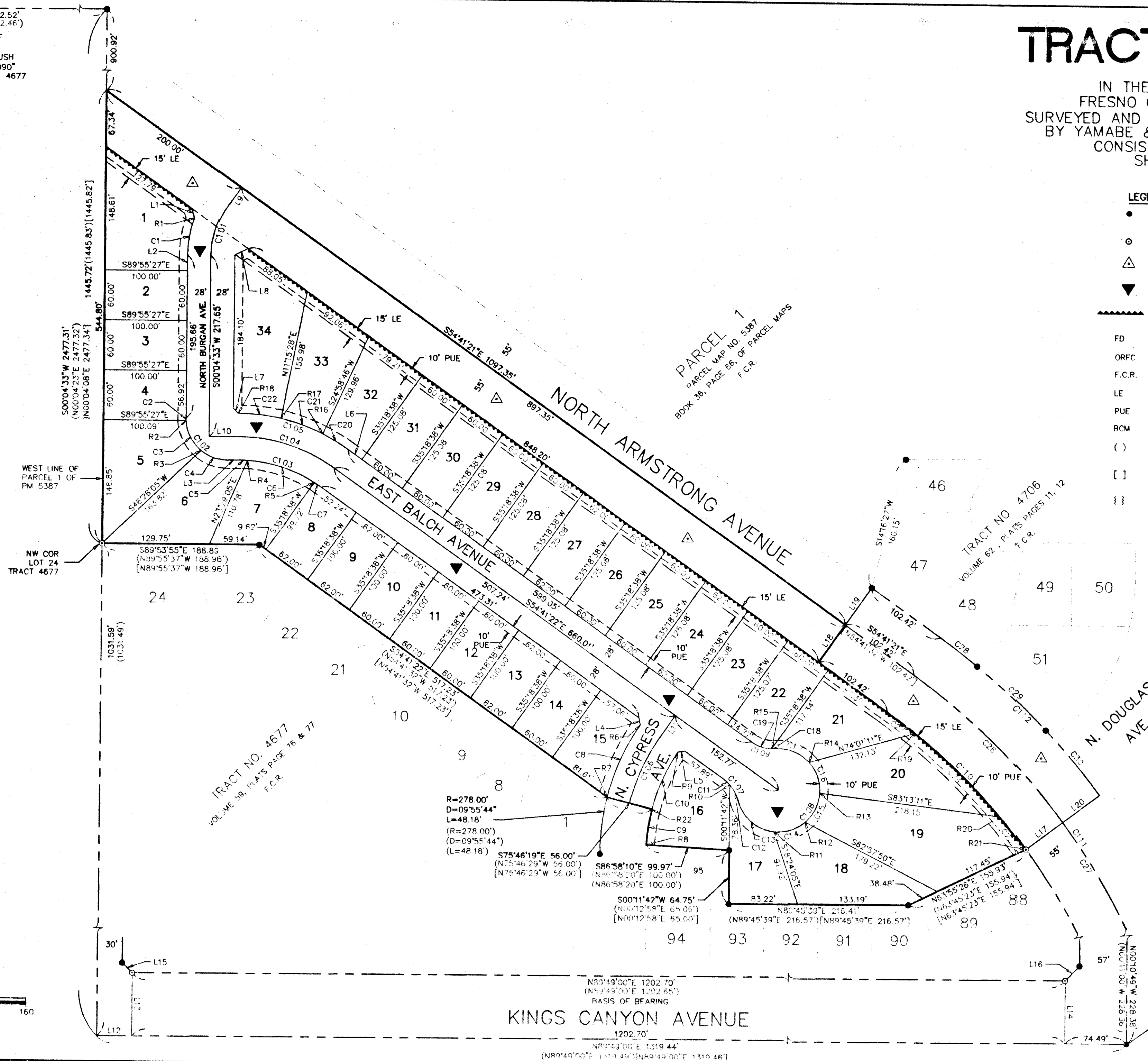
### BASIS OF BEARINGS

THE SOUTH LINE OF LOTS 36 THRU 54 OF TRACT No. 4677 TAKEN TO BE N89°49'00"E, PER TRACT No. 4677, RECORDED IN VOLUME 59 OF PLATS AT PAGES 76 & 77, F.C.R.

### NOTE:

SET 3/4" IRON PIPE, DOWN 0.5', TAGGED "RCE 30501" AT ALL LOT CORNERS, UNLESS OTHERWISE NOTED

N89°52'24"E 1322.52'  
 (N89°52'06"E 1322.46')  
 W 1/4 COR. OF  
 SEC 3-14/21  
 FD 3/4" IP FLUSH  
 TAGGED "LS 5090"  
 PER TRACT No. 4677



KINGS CANYON AVENUE

S1/4 COR. SEC 3-14/21  
 FD BCM DOWN 2". PER  
 TRACT No. 4677