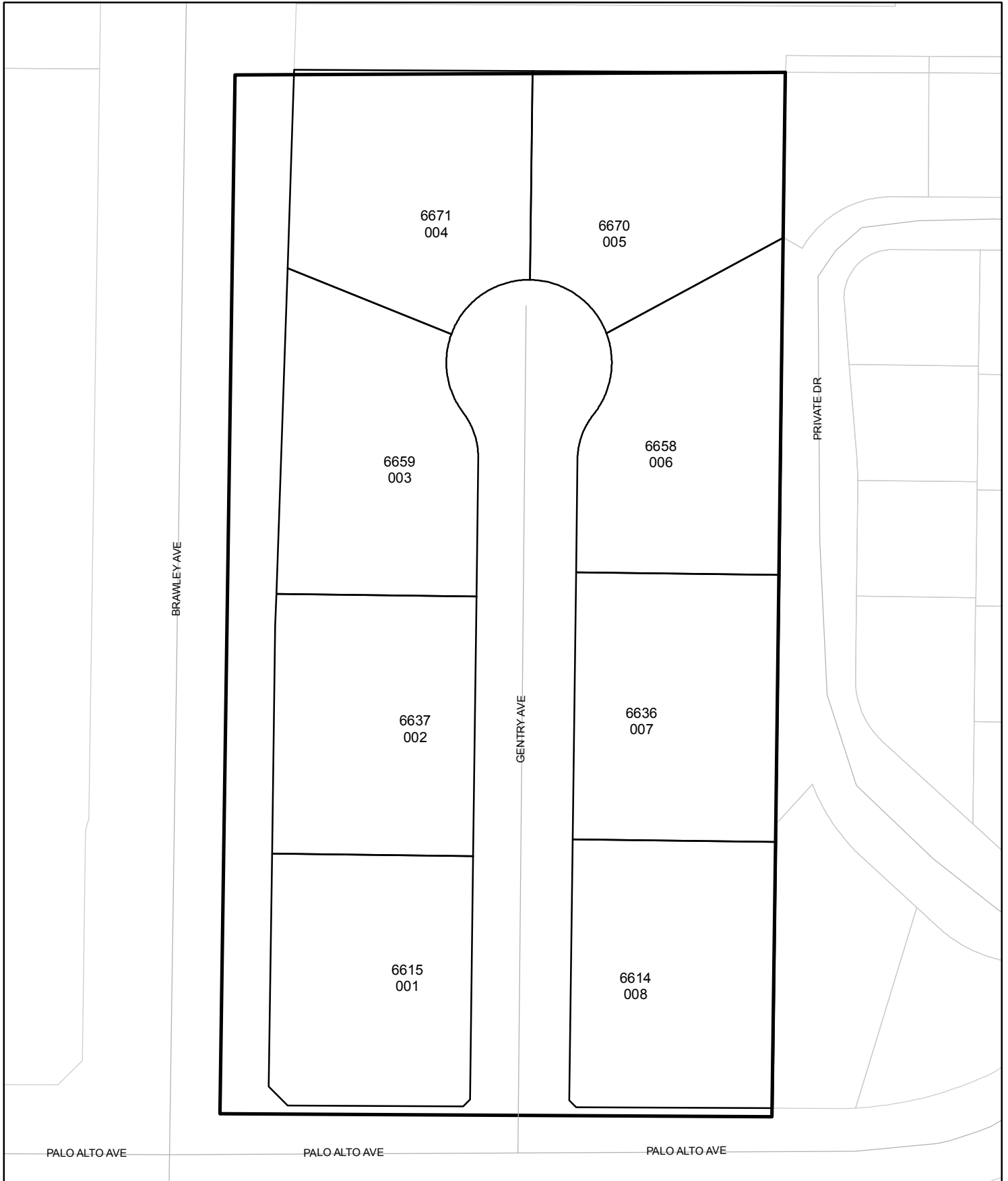




Street Names, Addresses and (Lot Numbers) for T4988

Prepared on Tue Apr 02 14:32:56 2013



MAP OF TRACT NO. 4988

IN THE CITY OF FRESNO, FRESNO COUNTY, CALIFORNIA
SHEET 2 OF 2 SHEETS

SURVEYED AND PLATTED APRIL, 2002 BY RABE ENGINEERING INC.
CIVIL ENGINEERS-LAND SURVEYORS 2021 N. GATEWAY BLVD., FRESNO CALIFORNIA 93727
(559) 252-7223

LEGEND

- MONUMENT FOUND AND ACCEPTED
1" OD IRON PIPE TAGGED R.C.E.
10782, DOWN 6" OR AS NOTED

- C.R. INDICATES CORNER RECORD ON
FILE WITH FRESNO COUNTY
SURVEYOR

SET 1" OD X 30" LONG IRON PIPE,
RCE 10782, DOWN 6" AT ALL LOT
CORNERS AND AT THE BEGINNING
AND END OF ALL CURVES OR WILL
BE SET WITHIN ONE YEAR OR
APPROVED EXTENSION THEREOF.

- BLUE BORDER INDICATES LIMITS OF
THIS SUBDIVISION.

- ***** INDICATES RELEQUISHMENT OF
DIRECT ACCESS RIGHTS NOW
OFFERED FOR DEDICATION

- PUE PUBLIC UTILITY EASEMENT NOW
OFFERED FOR DEDICATION

- LE LANDSCAPE AND IRRIGATION SYSTEM
EASEMENT NOW OFFERED FOR
DEDICATION

- △ INDICATES STREET RIGHT OF WAY
NOW OFFERED FOR DEDICATION FOR
STREET AND UTILITY PURPOSES

- L PUE LANDSCAPE, IRRIGATION SYSTEM
AND PUBLIC UTILITY EASEMENT NOW
OFFERED FOR DEDICATION

- (R) RADIAL

- () RECORD DATA PER MAP OF
BULLARD LINCX IRRIGATED
SUBDIVISION NO. 6 VOL 8 OF
PLATS AT PAGES 25 AND 26 FCR

- [] RECORD DATA PER MAP OF TRACT
NO. 3457 VOL 43 OF PLATS AT
PAGES 83 AND 84 FCR

BASIS OF BEARINGS
THE WEST LINE OF THE NORTHWEST QUARTER OF
SECTION 1, 13/19 AS SHOWN ON PARCEL MAP
2001-02, RECORDED IN BOOK 61 OF PARCEL MAPS,
AT PAGE 61, FRESNO COUNTY RECORDS. TAKEN AS:
N00°24'03"E

TRACT NO. 3457
VOL 43 PLATS
PAGES 83 AND 84 FCR

