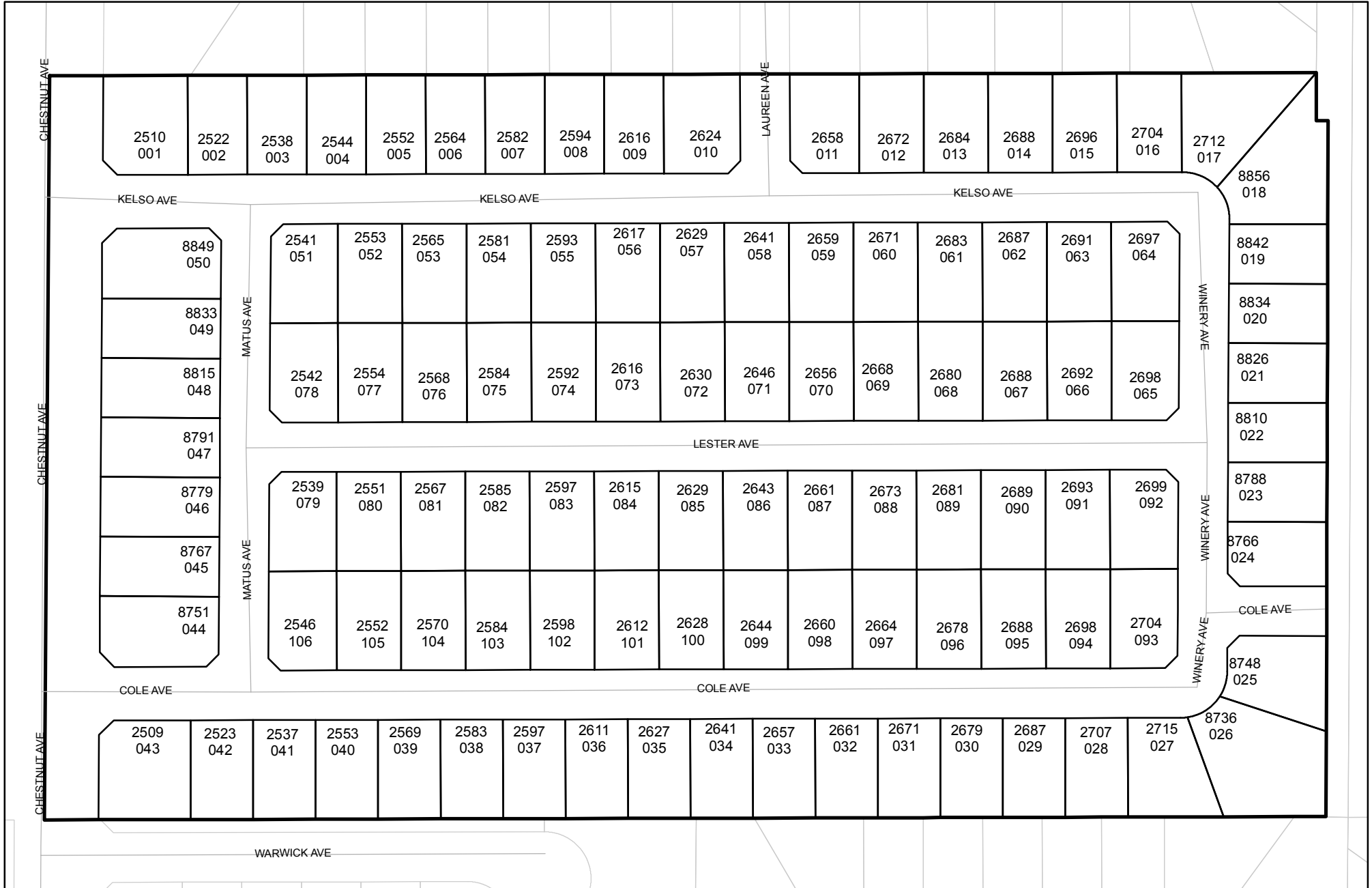




Prepared on Thu Oct 18 00:47:35 2018

Street Names, Addresses and (Lot Numbers) for T4979



TRACT NO. 4979

IN THE CITY OF FRESNO
 FRESNO COUNTY, CALIFORNIA
 SURVEYED AND PLATTED BY
 HARBOUR & ASSOCIATES IN JUNE, 2001
 CONSISTING OF 2 SHEETS
 SHEET 2 OF 2

LEGEND:

- FOUND AND ACCEPTED MONUMENT AS DESCRIBED HEREON
 - ⊙ SET 3/4" X 30" IRON PIPE, UP 4" IN 6" PCC MONUMENT, DOWN 6", TAGGED LS 5277.
 - () INDICATES RECORD DATA AS SHOWN ON GARFIELD PARK COLONY RECORDED IN BOOK 2 OF RECORD OF SURVEYS AT PAGE 66a, FRESNO COUNTY RECORDS.
 - < > INDICATES RECORD DATA AS SHOWN ON PARCEL MAP NO. 3273 RECORDED IN BOOK 27 OF RECORD OF SURVEYS AT PAGE 5, FRESNO COUNTY RECORDS.
 - G.P.C. INDICATES GARFIELD PARK COLONY RECORDED IN BOOK 2 OF RECORD OF SURVEYS AT PAGE 66a, FRESNO COUNTY RECORDS.
 - { } INDICATES RECORD DATA AS SHOWN ON TRACT NO. 4824, RECORDED IN VOLUME 63 OF PLATS AT PAGES 80 AND 81, FRESNO COUNTY RECORDS.
 - O.R.F.C. OFFICIAL RECORDS OF FRESNO COUNTY.
 - F.C.R. FRESNO COUNTY RECORDS.
 - PUE INDICATES PUBLIC UTILITY EASEMENT NOW OFFERED FOR DEDICATION FOR PUBLIC USE.
 - LE INDICATES LANDSCAPE EASEMENT NOW OFFERED FOR DEDICATION FOR PUBLIC USE.
 - ▲ INDICATES PREVIOUSLY DEDICATED FOR PUBLIC STREET PURPOSES AS INDICATED HEREON.
 - ▲ INDICATES NOW OFFERED FOR DEDICATION FOR PUBLIC STREET PURPOSES.
 - INDICATES RELINQUISHMENT OF DIRECT ACCESS RIGHTS.
- THE SHADED BLUE BORDER INDICATES THE LIMITS OF THIS SUBDIVISION.

NOTE:

SET 3/4" X 30" IRON PIPE, DOWN 0.5", TAGGED LS 5277, OR WILL BE SET WITHIN ONE YEAR OR ANY APPROVED EXTENSION THEREOF, FOR ALL LOT CORNERS, BLOCK CORNERS, AND THE BEGINNING AND ENDING OF ALL CURVES.

BASIS OF BEARINGS:

THE EAST LINE OF THE NORTHEAST QUARTER OF SECTION 25, 12/20, MDB&M, WAS TAKEN TO BE N 00°00'00" E <NORTH> AS SHOWN ON PARCEL MAP NO. 3273 RECORDED IN BOOK 27 OF PARCEL MAPS AT PAGE 5, FRESNO COUNTY RECORDS.

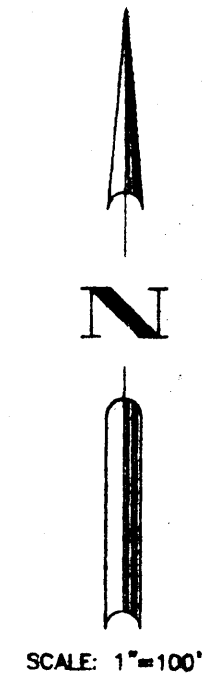
CURVE DATA:

CURVE NUMBER	DELTA	RADIUS	ARC LENGTH	CHORD LENGTH
C 1	47°39'55"	47.00'	38.10'	37.98'
C 2	42°47'27"	47.00'	35.10'	34.29'
C 3	32°34'38"	47.00'	26.72'	26.36'
C 4	48°45'45"	47.00'	40.00'	38.80'
C 5	8°12'15"	47.00'	6.73'	6.72'
C 6	90°27'22"	47.00'	74.20'	86.73'
C 7	89°32'38"	47.00'	73.48'	66.20'

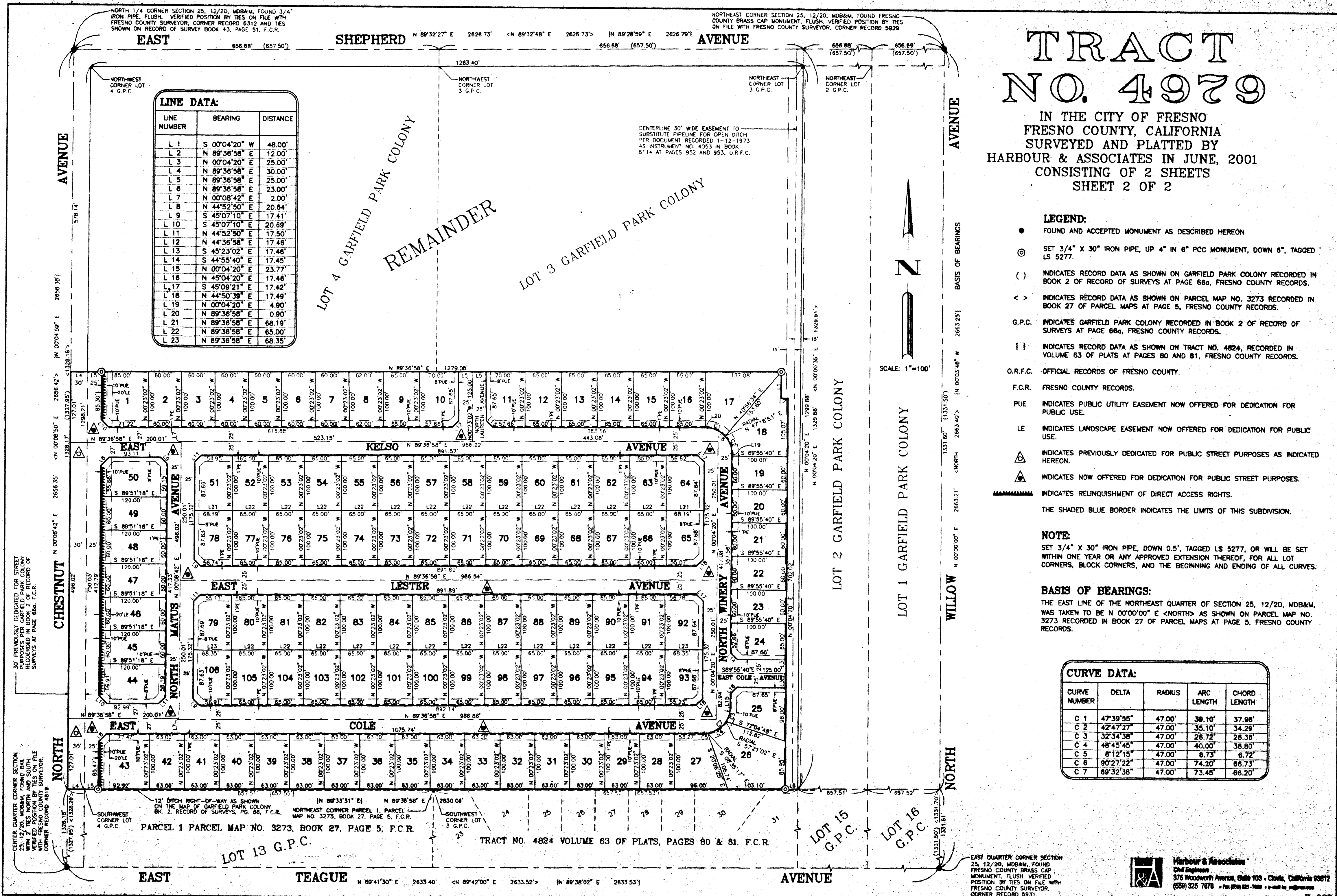
LINE DATA:

LINE NUMBER	BEARING	DISTANCE
L 1	S 00°04'20" W	48.00'
L 2	N 89°36'58" E	12.00'
L 3	N 00°04'20" E	25.00'
L 4	N 89°36'58" E	30.00'
L 5	N 89°36'58" E	25.00'
L 6	N 89°36'58" E	23.00'
L 7	N 00°08'42" E	2.00'
L 8	N 44°52'30" E	20.84'
L 9	S 45°07'10" E	17.41'
L 10	S 45°07'10" E	20.89'
L 11	N 44°52'30" E	17.50'
L 12	N 44°36'58" E	17.46'
L 13	S 45°23'02" E	17.48'
L 14	S 44°55'40" E	17.45'
L 15	N 00°04'20" E	23.77'
L 16	N 45°04'20" E	17.48'
L 17	S 45°09'21" E	17.42'
L 18	N 44°50'39" E	17.49'
L 19	N 00°04'20" E	4.90'
L 20	N 89°36'58" E	0.90'
L 21	N 89°36'58" E	68.19'
L 22	N 89°36'58" E	65.00'
L 23	N 89°36'58" E	68.35'

CENTERLINE 30' WIDE EASEMENT TO SUBSTITUTE PIPELINE FOR OPEN DITCH PER DOCUMENT RECORDED 1-12-1973 AS INSTRUMENT NO. 4053 IN BOOK 6114 AT PAGES 952 AND 953, C.R.F.C.



SCALE: 1"=100'



Harbour & Associates
 Civil Engineers
 375 Woodworth Avenue, Suite 103 • Clovis, California 93612
 (509) 325 7878 • Fax (509) 325 7888 • e-mail: h&a@harbour.com
 W&A 00-055 F-033