



Prepared on Tue Apr 02 14:33:57 2013

Street Names, Addresses and (Lot Numbers) for T4964



SUBDIVISION MAP OF TRACT NO. 4964 VALERIE ESTATES

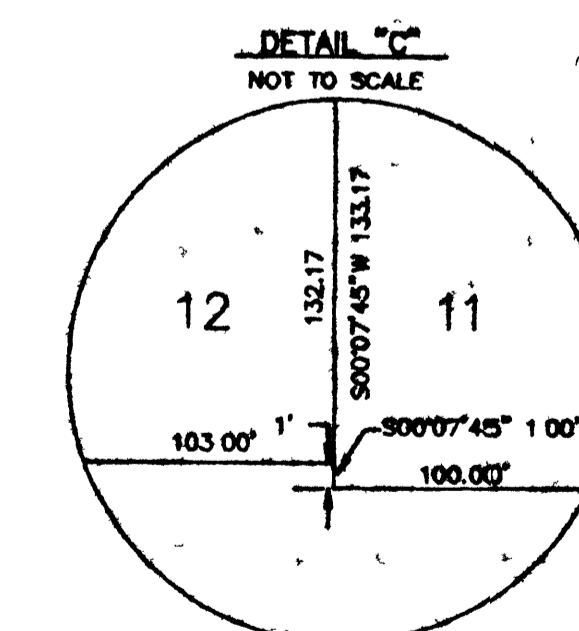
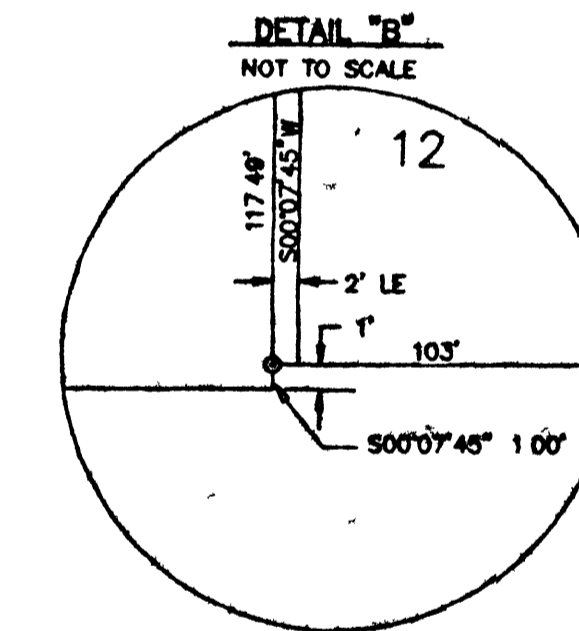
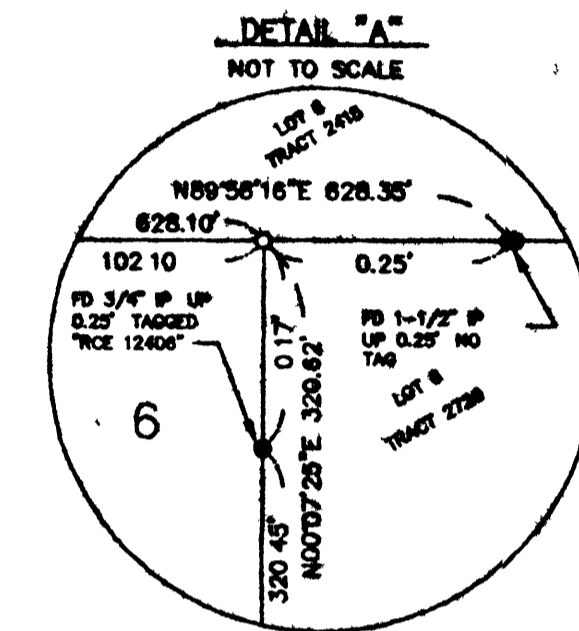
IN THE CITY OF FRESNO
FRESNO COUNTY, CALIFORNIA
SHEET 2 OF 2

BASIS OF BEARINGS

THE SOUTH LINE OF THE NORTHWEST QUARTER OF SECTION 8, TOWNSHIP 13 SOUTH, RANGE 20 EAST, M.D.B.M. TAKEN AS N89°58'18"W AS SHOWN ON THE MAP OF TRACT NO. 2816, THE EXTENSION II, AS RECORDED IN BOOK 29 OF PLATS, PAGES 81 & 82, F.C.R.

LEGEND:

- MONUMENT FOUND AND ACCEPTED AS NOTED
- ⊙ SET 3/4" IRON PIPE, UP 4" IN 6"x30" PCC MONUMENT, DOWN 6" TAGGED "RCE 30501" UNLESS OTHERWISE NOTED
- SET 3/4" IRON PIPE, DOWN 6", TAGGED "RCE 30501"
- P.U.E. PUBLIC UTILITY EASEMENT NOW OFFERED FOR DEDICATION FOR PUBLIC USE
- LE LANDSCAPE EASEMENT NOW OFFERED FOR DEDICATION
- F.C.R. FRESNO COUNTY RECORDS
- FD FOUND
- CALC CALCULATED FROM RECORD DATA
- IP IRON PIPE
- ▲ STREET PREVIOUSLY DEDICATED FOR PUBLIC USE
- ⊕ PUBLIC STREET EASEMENT NOW OFFERED FOR DEDICATION FOR PUBLIC USE
- () RECORD DATA PER MAP OF BULLARD LANDS IRRIGATED SUBDIVISION NO. 6, BOOK 8 OF PLATS, PAGES 25 & 26, F.C.R.
- [] RECORD DATA PER TRACT NO. 2616 BOOK 29 OF PLATS, PAGES 81 & 82 F.C.R.
- < > RECORD DATA PER TRACT NO. 2720 BOOK 30 OF PLATS, PAGE 28, F.C.R.
- { } RECORD DATA PER TRACT NO. 2415 BOOK 28 OF PLATS, PAGE 33, F.C.R.
- (()) RECORD DATA PER TRACT NO. 2733, BOOK 30 OF PLATS, PAGE 61 F.C.R.
- BLUE BORDER INDICATES LIMITS OF THIS SUBDIVISION
- INDICATES EXISTING PROPERTY LINES
- - - INDICATES EXISTING CENTERLINE
- - - INDICATES PROPOSED EASEMENT
- - - INDICATES RELINQUISHMENT OF DIRECT ACCESS RIGHTS



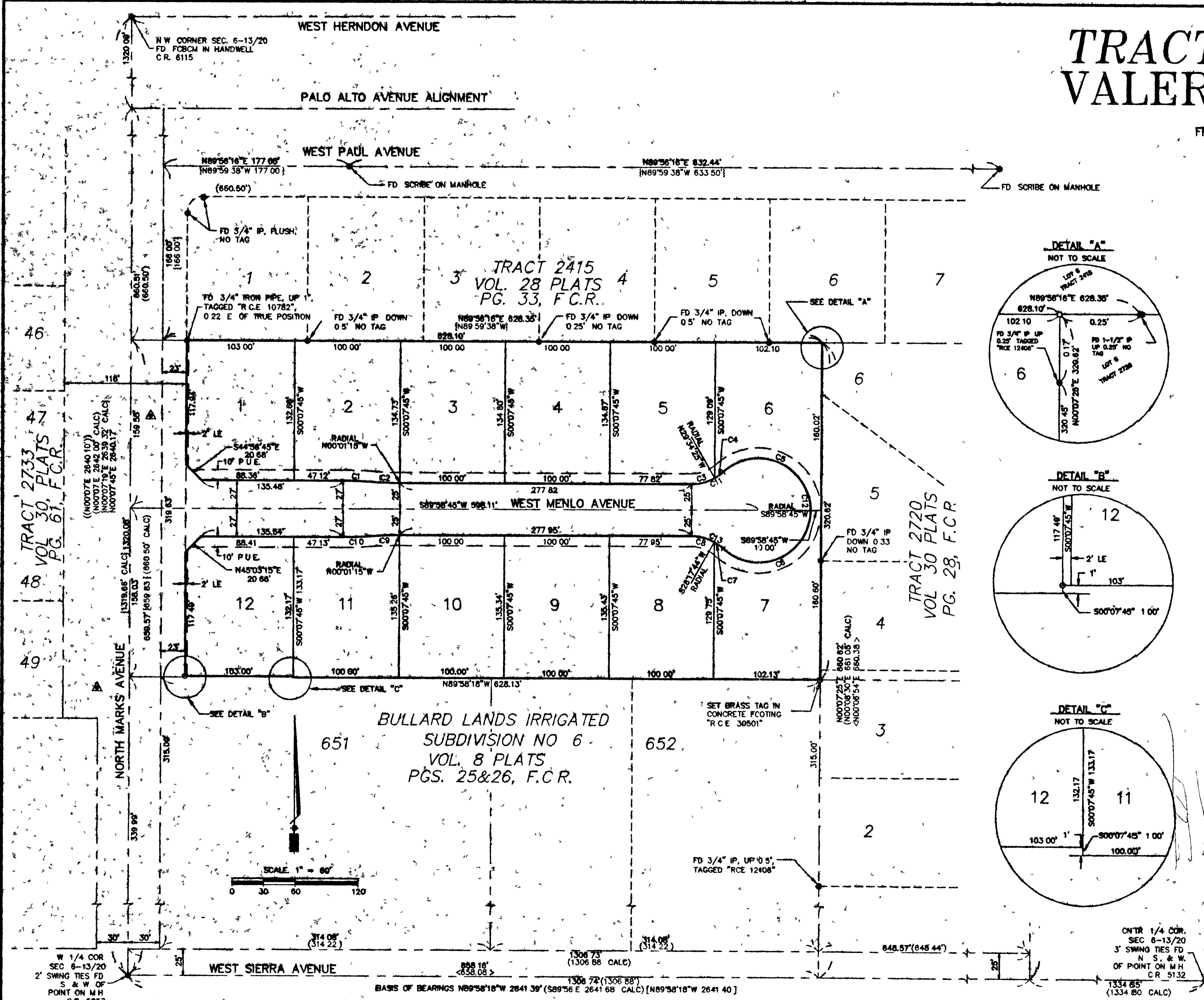
CURVE TABLE			
CURVE	DELTA	RADIUS	LENGTH
C1	4°19'56"	350.00	26.46
C2	4°19'56"	350.00	26.46
C3	29°33'10"	45.00	23.21
C4	12°59'03"	45.00	10.20
C5	132°32'13"	90.00	115.66
C6	132°32'13"	90.00	115.66
C7	13°13'14"	45.00	10.38
C8	29°18'59"	45.00	23.03
C9	4°19'56"	350.00	26.46
C10	4°19'56"	350.00	26.46
C11	42°32'13"	45.00	33.41
C12	285°04'28"	90.00	231.32
C13	42°32'13"	45.00	33.41

NOTE:

SET 3/4" IRON PIPE, DOWN 0.5, TAGGED "RCE 30501" AT ALL LOT CORNERS, BEGINNING AND ENDING OF CURVES

ONTR 1/4 COR.
SEC 6-13/20
3' SWING TIES FD
N, S, & W
OF POINT ON M.H.
CR 5132

PREPARED BY
YAMABE & HORN ENGINEERING, INC.
1300 EAST SHAW AVENUE, SUITE 176
FRESNO, CA 93710
PH. 558-244-3123 FAX 558-244-3120

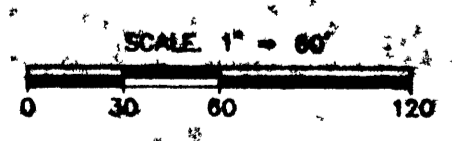


TRACT 2733
VOL. 30, PLATS
PG. 61, F.C.R.

TRACT 2720
VOL. 30 PLATS
PG. 28, F.C.R.

TRACT 2415
VOL. 28 PLATS
PG. 33, F.C.R.

BULLARD LANDS IRRIGATED
SUBDIVISION NO. 6
VOL. 8 PLATS
PGS. 25&26, F.C.R.



T-4855