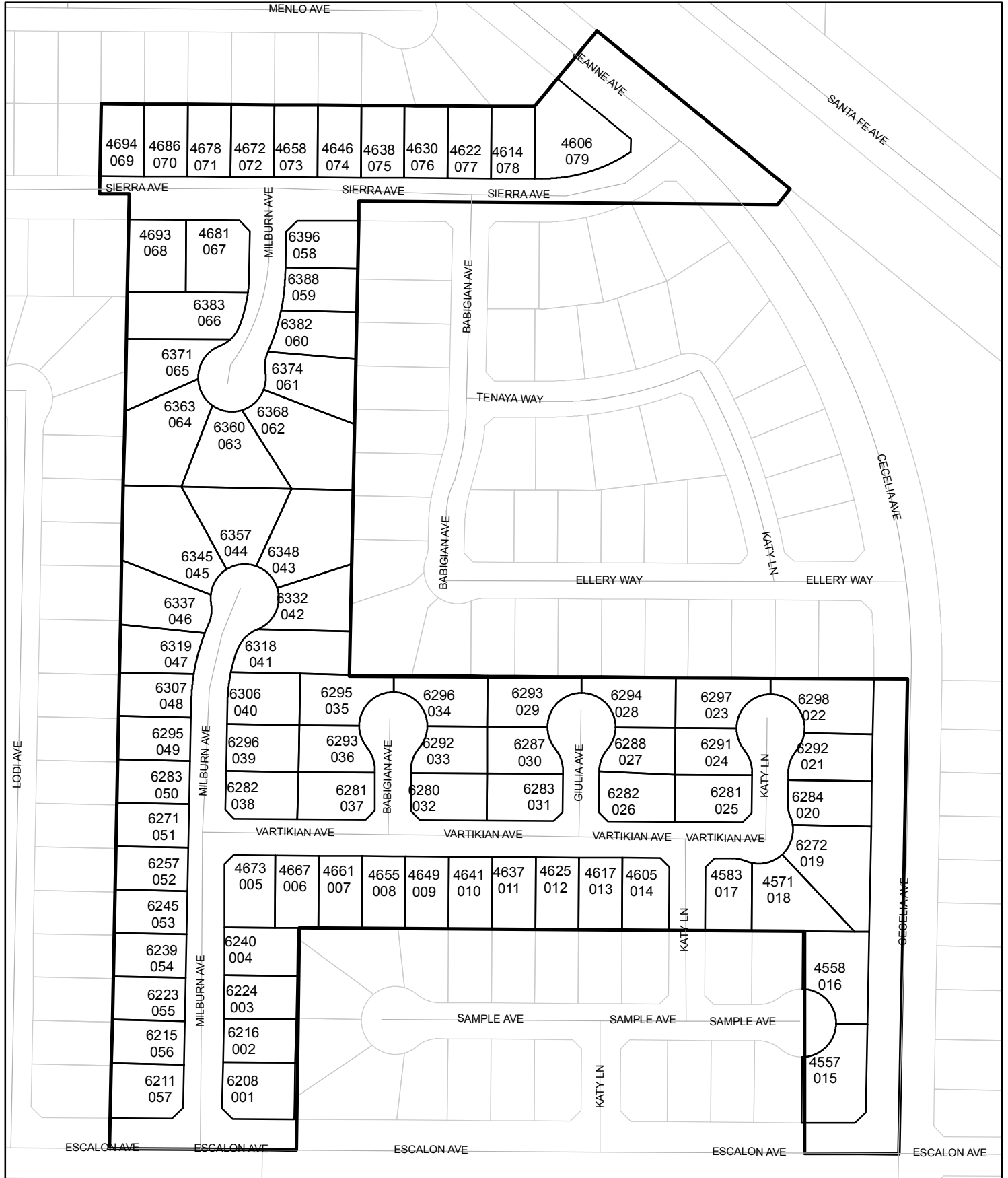




Street Names, Addresses and (Lot Numbers) for T4960

Prepared on Thu Feb 14 22:29:28 2019



3/4" IRON PIPE, TAGGED RCE 26996, DOWN 6", AS BEING THE NORTHEAST CORNER OF LOT 81 OF TRACT No. 4866, TREND HOMES No. 27, VOL. 63, PAGES 49-52 OF PLATS, F.C.R.

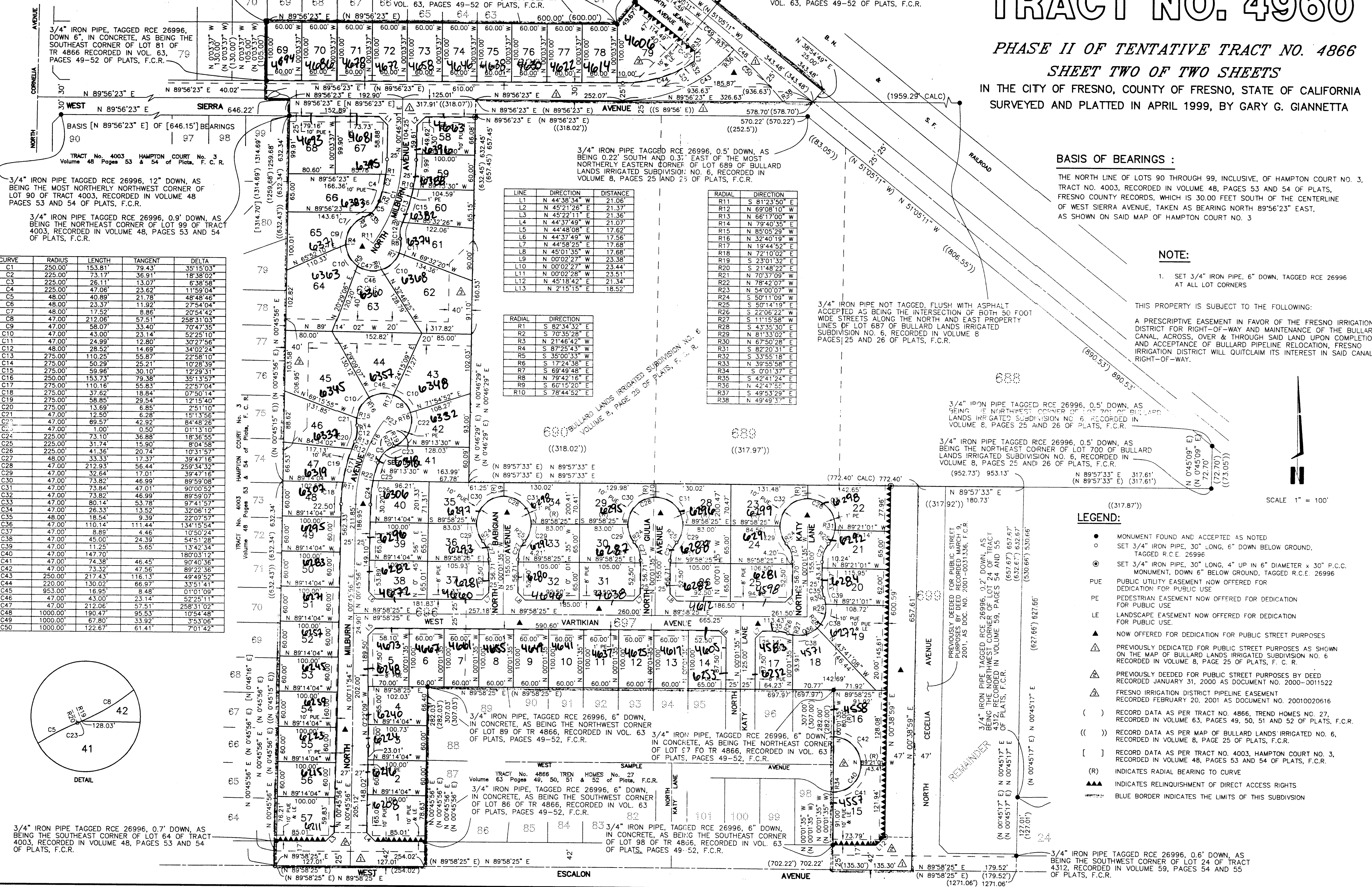
3/4" IRON PIPE, TAGGED RCE 26996, DOWN 6", AS BEING AN ANGLE POINT ON THE SOUTH LINE OF LOT 61 OF TRACT No. 4866, RECORDED IN VOL. 63, PAGES 49-52 OF PLATS, F.C.R.

3/4" IRON PIPE, TAGGED RCE 26996, DOWN 6", IN CONCRETE, AS BEING THE MOST EASTERLY CORNER OF LOT 61 OF TRACT No. 4866, RECORDED IN VOL. 63, PAGES 49-52 OF PLATS, F.C.R.

TRACT NO. 4960

PHASE II OF TENTATIVE TRACT NO. 4866 SHEET TWO OF TWO SHEETS

IN THE CITY OF FRESNO, COUNTY OF FRESNO, STATE OF CALIFORNIA
SURVEYED AND PLATTED IN APRIL 1999, BY GARY G. GIANNETTA

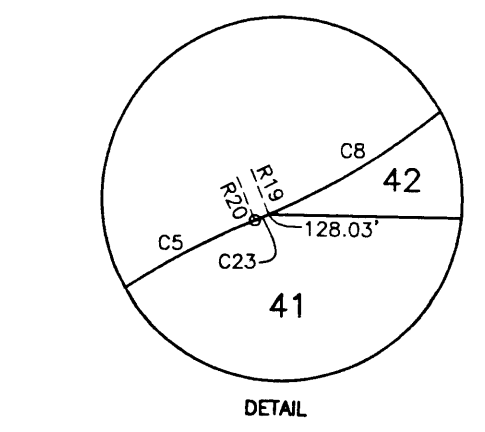


TRACT No. 4003 HAMPTON COURT No. 3
Volume 48 Pages 53 & 54 of Plats, F.C.R.

3/4" IRON PIPE TAGGED RCE 26996, 12" DOWN, AS BEING THE MOST NORTHERLY NORTHWEST CORNER OF LOT 90 OF TRACT 4003, RECORDED IN VOLUME 48, PAGES 53 AND 54 OF PLATS, F.C.R.

3/4" IRON PIPE TAGGED RCE 26996, 0.9' DOWN, AS BEING THE NORTHEAST CORNER OF LOT 99 OF TRACT 4003, RECORDED IN VOLUME 48, PAGES 53 AND 54 OF PLATS, F.C.R.

CURVE	RADIUS	LENGTH	TANGENT	DELTA
C1	250.00'	153.81'	79.43'	35°15'03"
C2	225.00'	73.17'	36.91'	18°38'02"
C3	225.00'	26.11'	13.07'	6°38'58"
C4	225.00'	47.06'	23.62'	11°59'04"
C5	48.00'	40.89'	21.78'	48°48'46"
C6	48.00'	23.37'	11.92'	27°54'04"
C7	48.00'	17.52'	8.86'	20°54'42"
C8	47.00'	212.06'	57.51'	258°31'03"
C9	47.00'	58.07'	33.40'	70°47'35"
C10	47.00'	43.00'	23.14'	52°25'10"
C11	47.00'	24.99'	12.80'	30°27'56"
C12	48.00'	28.52'	14.69'	34°02'24"
C13	275.00'	110.25'	55.87'	22°58'10"
C14	275.00'	50.29'	25.21'	10°28'39"
C15	275.00'	59.96'	30.10'	12°29'31"
C16	250.00'	153.73'	79.38'	35°13'57"
C17	275.00'	110.16'	55.83'	22°57'04"
C18	275.00'	37.62'	18.84'	07°50'14"
C19	275.00'	58.85'	29.54'	12°15'40"
C20	275.00'	13.69'	6.85'	2°51'10"
C21	47.00'	12.50'	6.28'	15°13'56"
C22	47.00'	89.57'	42.92'	84°48'26"
C23	47.00'	1.00'	0.50'	01°13'10"
C24	225.00'	73.10'	36.88'	18°38'55"
C25	225.00'	31.74'	15.90'	8°04'58"
C26	225.00'	41.36'	20.74'	10°31'57"
C27	48.00'	33.33'	17.37'	39°47'16"
C28	47.00'	212.93'	56.44'	259°34'32"
C29	47.00'	32.64'	17.01'	39°47'16"
C30	47.00'	73.82'	46.99'	89°59'08"
C31	47.00'	73.84'	47.01'	90°00'52"
C32	47.00'	73.82'	46.99'	89°59'07"
C33	47.00'	80.14'	53.78'	97°41'57"
C34	47.00'	26.33'	13.52'	32°06'12"
C35	48.00'	18.54'	9.39'	22°07'57"
C36	47.00'	110.14'	111.44'	134°15'54"
C37	47.00'	8.89'	4.46'	10°50'24"
C38	47.00'	45.00'	24.39'	54°51'28"
C39	47.00'	11.25'	5.65'	13°42'34"
C40	47.00'	147.70'	180.03'12"	
C41	47.00'	74.38'	46.45'	90°40'36"
C42	47.00'	73.32'	47.58'	89°22'36"
C43	250.00'	217.43'	116.13'	49°49'52"
C44	220.00'	130.02'	66.97'	33°51'51"
C45	953.00'	16.95'	8.48'	01°01'09"
C46	47.00'	43.00'	23.14'	52°25'11"
C47	47.00'	212.06'	57.51'	258°31'02"
C48	1000.00'	190.47'	95.53'	10°54'48"
C49	1000.00'	67.80'	33.92'	3°53'06"
C50	1000.00'	122.67'	61.41'	7°01'42"



3/4" IRON PIPE TAGGED RCE 26996, 0.7' DOWN, AS BEING THE SOUTHWEST CORNER OF LOT 64 OF TRACT 4003, RECORDED IN VOLUME 48, PAGES 53 AND 54 OF PLATS, F.C.R.

LINE	DIRECTION	DISTANCE
L1	N 44°38'34" W	21.06'
L2	N 45°21'26" E	21.37'
L3	N 45°22'11" E	21.36'
L4	N 44°37'49" W	21.07'
L5	N 44°48'08" E	17.62'
L6	N 44°37'49" W	17.56'
L7	N 44°58'25" E	17.68'
L8	N 45°01'35" W	17.68'
L9	N 00°02'27" W	23.38'
L10	N 00°02'27" W	23.44'
L11	N 00°02'28" W	23.51'
L12	N 45°18'42" E	21.34'
L13	N 2°15'15" E	18.52'

RADIAL	DIRECTION
R1	S 82°34'32" E
R2	S 70°35'28" E
R3	N 21°46'42" W
R4	S 87°25'43" W
R5	S 35°00'33" W
R6	S 17°24'38" E
R7	S 69°49'48" E
R8	N 79°42'16" E
R9	S 66°15'20" E
R10	S 78°44'52" E

RADIAL	DIRECTION
R11	S 81°23'50" E
R12	N 69°08'10" W
R13	N 66°17'00" W
R14	N 79°40'35" E
R15	N 85°05'29" W
R16	N 32°40'19" W
R17	N 19°44'52" E
R18	N 72°10'02" E
R19	S 23°01'32" E
R20	S 21°48'22" E
R21	N 70°37'09" W
R22	N 78°42'07" W
R23	N 54°00'07" W
R24	S 50°14'19" W
R25	S 22°06'22" W
R26	S 11°15'58" W
R27	S 43°35'30" E
R28	N 81°33'02" E
R29	N 67°50'28" E
R30	S 87°20'31" E
R31	S 33°55'18" E
R32	N 39°55'58" E
R33	S 0°01'37" E
R34	S 42°41'24" E
R35	N 42°47'55" E
R36	S 49°53'29" E
R37	N 49°49'37" E

BASIS OF BEARINGS :

THE NORTH LINE OF LOTS 90 THROUGH 99, INCLUSIVE, OF HAMPTON COURT NO. 3, TRACT NO. 4003, RECORDED IN VOLUME 48, PAGES 53 AND 54 OF PLATS, FRESNO COUNTY RECORDS, WHICH IS 30.00 FEET SOUTH OF THE CENTERLINE OF WEST SIERRA AVENUE, TAKEN AS BEARING NORTH 89°56'23" EAST, AS SHOWN ON SAID MAP OF HAMPTON COURT NO. 3

NOTE:

- SET 3/4" IRON PIPE, 6" DOWN, TAGGED RCE 26996 AT ALL LOT CORNERS
- THIS PROPERTY IS SUBJECT TO THE FOLLOWING:
- A PRESCRIPTIVE EASEMENT IN FAVOR OF THE FRESNO IRRIGATION DISTRICT FOR RIGHT-OF-WAY AND MAINTENANCE OF THE BULLARD CANAL, ACROSS, OVER & THROUGH SAID LAND UPON COMPLETION AND ACCEPTANCE OF BULLARD PIPELINE RELOCATION, FRESNO IRRIGATION DISTRICT WILL QUITCLAIM ITS INTEREST IN SAID CANAL RIGHT-OF-WAY.

3/4" IRON PIPE NOT TAGGED, FLUSH WITH ASPHALT ACCEPTED AS BEING THE INTERSECTION OF BOTH 50 FOOT WIDE STREETS ALONG THE NORTH AND EAST PROPERTY LINES OF LOT 687 OF BULLARD LANDS IRRIGATED SUBDIVISION NO. 6, RECORDED IN VOLUME 8, PAGES 25 AND 26 OF PLATS, F.C.R.

3/4" IRON PIPE TAGGED RCE 26996, 0.5' DOWN, AS BEING THE NORTHEAST CORNER OF LOT 700 OF BULLARD LANDS IRRIGATED SUBDIVISION NO. 6, RECORDED IN VOLUME 8, PAGES 25 AND 26 OF PLATS, F.C.R.

3/4" IRON PIPE TAGGED RCE 26996, 0.5' DOWN, AS BEING THE NORTHEAST CORNER OF LOT 700 OF BULLARD LANDS IRRIGATED SUBDIVISION NO. 6, RECORDED IN VOLUME 8, PAGES 25 AND 26 OF PLATS, F.C.R.

LEGEND:

- MONUMENT FOUND AND ACCEPTED AS NOTED
- SET 3/4" IRON PIPE, 30" LONG, 6" DOWN BELOW GROUND, TAGGED R.C.E. 26996
- SET 3/4" IRON PIPE, 30" LONG, 4" UP IN 6" DIAMETER x 30" P.C.C. MONUMENT, DOWN 6" BELOW GROUND, TAGGED R.C.E. 26996
- PUE PUBLIC UTILITY EASEMENT NOW OFFERED FOR DEDICATION FOR PUBLIC USE
- PE PEDESTRIAN EASEMENT NOW OFFERED FOR DEDICATION FOR PUBLIC USE
- LE LANDSCAPE EASEMENT NOW OFFERED FOR DEDICATION FOR PUBLIC USE
- ▲ NOW OFFERED FOR DEDICATION FOR PUBLIC STREET PURPOSES
- △ PREVIOUSLY DEDICATED FOR PUBLIC STREET PURPOSES AS SHOWN ON THE MAP OF BULLARD LANDS IRRIGATED SUBDIVISION NO. 6 RECORDED IN VOLUME 8, PAGE 25 OF PLATS, F. C. R.
- △ PREVIOUSLY DEEDED FOR PUBLIC STREET PURPOSES BY DEED RECORDED JANUARY 31, 2000 AS DOCUMENT NO. 2000-0011522
- △ FRESNO IRRIGATION DISTRICT PIPELINE EASEMENT RECORDED FEBRUARY 20, 2001 AS DOCUMENT NO. 20010020616
- () RECORD DATA AS PER TRACT NO. 4866, TREND HOMES NO. 27, RECORDED IN VOLUME 63, PAGES 49, 50, 51 AND 52 OF PLATS, F.C.R.
- (()) RECORD DATA AS PER MAP OF BULLARD LANDS IRRIGATED NO. 6, RECORDED IN VOLUME 8, PAGE 25 OF PLATS, F.C.R.
- [] RECORD DATA AS PER TRACT NO. 4003, HAMPTON COURT NO. 3, RECORDED IN VOLUME 48, PAGES 53 AND 54 OF PLATS, F.C.R.
- (R) INDICATES RADIAL BEARING TO CURVE
- ▲▲ INDICATES RELINQUISHMENT OF DIRECT ACCESS RIGHTS
- BLUE BORDER INDICATES THE LIMITS OF THIS SUBDIVISION

SCALE 1" = 100'