



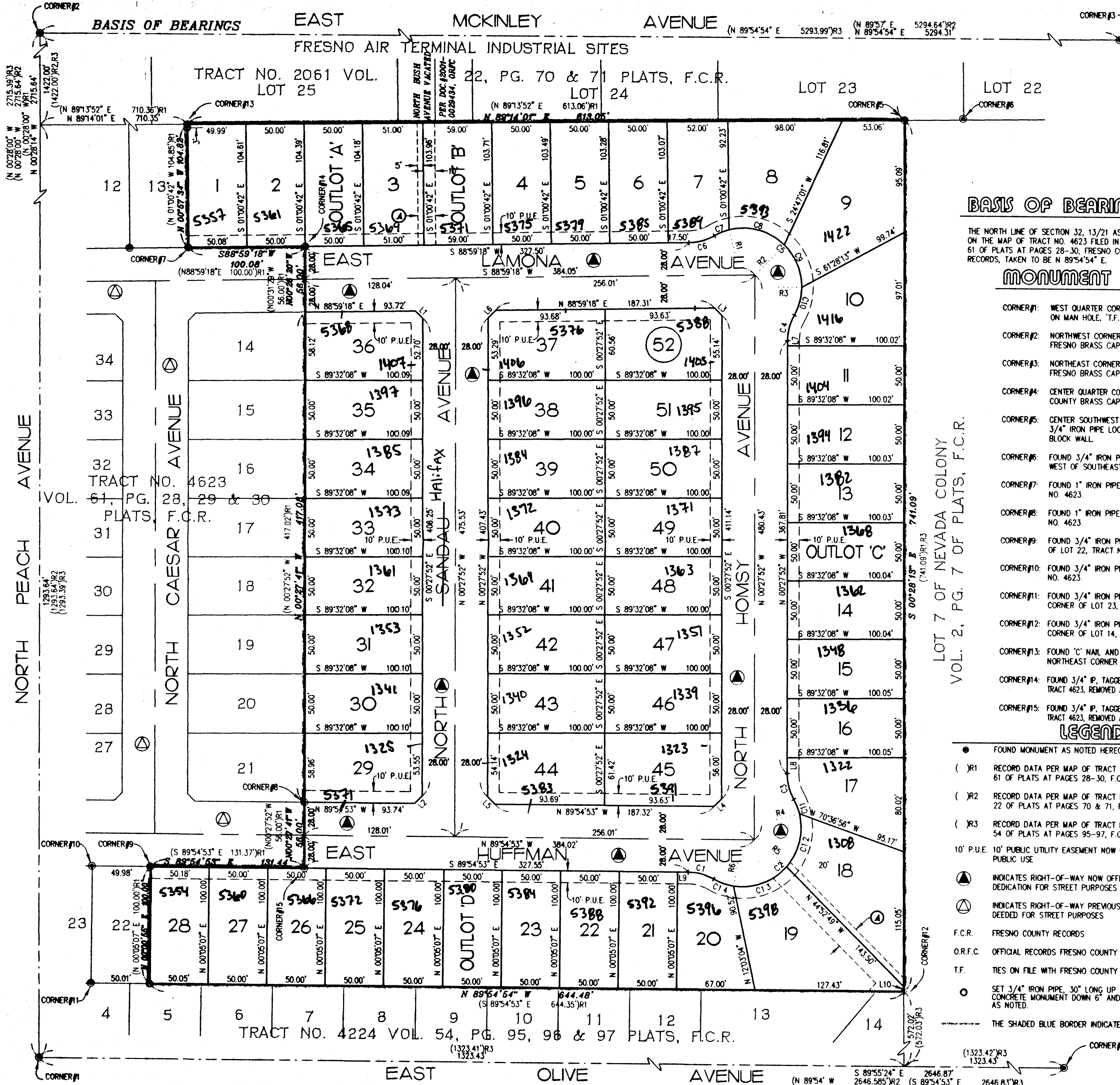
Street Names, Addresses and (Lot Numbers) for T4957

Prepared on Tue Jun 06 23:43:06 2017



MAP OF TRACT NO. 4957

IN THE CITY OF FRESNO
COUNTY OF FRESNO, STATE OF CALIFORNIA
SHEET 2 OF 2



BASIS OF BEARINGS

THE NORTH LINE OF SECTION 32, 13/21 AS SHOWN ON THE MAP OF TRACT NO. 4623 FILED IN VOLUME 61 OF PLATS AT PAGES 28-30, FRESNO COUNTY RECORDS, TAKEN TO BE N 89°54'54" E.

MONUMENT NOTES:

- CORNER #1: WEST QUARTER CORNER OF SECTION 32, 13/21, CORNER FALLS ON MAN HOLE, 'T.F.'
- CORNER #2: NORTHWEST CORNER OF SECTION 32, 13/21, FOUND CITY OF FRESNO BRASS CAP MONUMENT, 'T.F.'
- CORNER #3: NORTHEAST CORNER OF SECTION 32, 13/21, FOUND CITY OF FRESNO BRASS CAP MONUMENT, 'T.F.'
- CORNER #4: CENTER QUARTER CORNER OF SECTION 32, 13/21, FOUND FRESNO COUNTY BRASS CAP MONUMENT, 'T.F.'
- CORNER #5: CENTER SOUTHWEST 1/16 CORNER OF SECTION 32, 13/21, FOUND 3/4" IRON PIPE LOCATED UNDER NORTHEAST CORNER OF 0.50' BLOCK WALL.
- CORNER #6: FOUND 3/4" IRON PIPE, NO TAG, PIPE IS 1.0± NORTH AND 0.7± WEST OF SOUTHEAST CORNER OF LOT 23, TRACT NO. 2061.
- CORNER #7: FOUND 1" IRON PIPE, SOUTHEAST CORNER OF LOT 13, TRACT NO. 4623.
- CORNER #8: FOUND 1" IRON PIPE, SOUTHEAST CORNER OF LOT 21, TRACT NO. 4623.
- CORNER #9: FOUND 3/4" IRON PIPE, TAGGED LS 5277, NORTHEAST CORNER OF LOT 22, TRACT NO. 4623.
- CORNER #10: FOUND 3/4" IRON PIPE, NORTHEAST CORNER OF LOT 23, TRACT NO. 4623.
- CORNER #11: FOUND 3/4" IRON PIPE, TAGGED LS 5277, UP 0.15', SOUTHEAST CORNER OF LOT 23, TRACT NO. 4623.
- CORNER #12: FOUND 3/4" IRON PIPE, TAGGED LS 5277, DOWN 6", NORTHEAST CORNER OF LOT 14, TRACT 4224.
- CORNER #13: FOUND 'C' NAIL AND TAG LS 5277 IN TOP OF CONCRETE WALL, NORTHEAST CORNER OF LOT 13, TRACT 4623.
- CORNER #14: FOUND 3/4" IP, TAGGED LS 5277, DN. 6", N.E. COR. LAMONA AVENUE, TRACT 4623, REMOVED AND SET DURABLE MONUMENTS PER CITY STD. P-31.
- CORNER #15: FOUND 3/4" IP, TAGGED LS 5277, DN. 6", S.E. COR. HUFFMAN AVENUE, TRACT 4623, REMOVED AND SET DURABLE MONUMENTS PER CITY STD. P-31.

LEGEND

- FOUND MONUMENT AS NOTED HEREON.
- (R1) RECORD DATA PER MAP OF TRACT NO. 4623 FILED IN VOLUME 61 OF PLATS AT PAGES 28-30, F.C.R.
- (R2) RECORD DATA PER MAP OF TRACT NO. 2061 FILED IN VOLUME 22 OF PLATS AT PAGES 70 & 71, F.C.R.
- (R3) RECORD DATA PER MAP OF TRACT NO. 4224 FILED IN VOLUME 54 OF PLATS AT PAGES 95-97, F.C.R.
- 10' P.U.E. 10' PUBLIC UTILITY EASEMENT NOW OFFERED FOR DEDICATION FOR PUBLIC USE.
- ⊙ INDICATES RIGHT-OF-WAY NOW OFFERED FOR DEDICATION FOR STREET PURPOSES.
- ⊙ INDICATES RIGHT-OF-WAY PREVIOUSLY DEEDED FOR STREET PURPOSES.
- F.C.R. FRESNO COUNTY RECORDS
- O.R.F.C. OFFICIAL RECORDS FRESNO COUNTY
- T.F. TIES ON FILE WITH FRESNO COUNTY SURVEYOR'S OFFICE
- SET 3/4" IRON PIPE, 30" LONG UP 4", IN 6" DIAMETER X 30" CONCRETE MONUMENT DOWN 6" AND TAGGED LS 4823 EXCEPT AS NOTED.
- THE SHADED BLUE BORDER INDICATES THE LIMITS OF THIS SUBDIVISION

NOTES:

SET 3/4" X 30" IRON PIPE DOWN 6" TAGGED LS 4823 FOR ALL CORNERS AND CURVE POINTS AND CORNER CUTOFFS.
OUTLOTS 'A', 'B', 'C' & 'D' DESIGNATED FOR PRIVATE PARK/OPEN SPACE USE.

KEYNOTE LEGEND

- ⊙ EXISTING PIPELINE EASEMENT PREVIOUSLY DEEDED TO FRESNO METROPOLITAN FLOOD CONTROL DISTRICT PER DEED RECORDED OCTOBER 21, 1997 AS DOCUMENT NO. 97140035, O.R.F.C. SUBJECT TO:
A RESOLUTION ADOPTED BY THE FRESNO METROPOLITAN FLOOD CONTROL DISTRICT, BOARD OF DIRECTORS, TO QUITCLAIM THAT PORTION OF SAID EXCLUSIVE EASEMENT OVER AND THROUGH EAST LAMONA AND NORTH HOMS Y AVENUES OFFERED FOR DEDICATION FOR PUBLIC RIGHT-OF-WAY, UPON RECORDATION OF FINAL MAP.

CURVE DATA TABLE

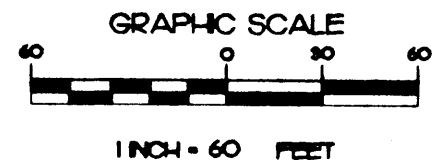
CURVE	RADIUS	LENGTH	DELTA
C1	45.00'	22.86'	29°06'37"
C2	50.00'	129.83'	148°46'13"
C3	45.00'	22.86'	29°06'37"
C4	45.00'	22.86'	29°06'37"
C5	50.00'	129.83'	148°46'04"
C6	45.00'	22.86'	29°06'37"
C7	50.00'	13.58'	15°33'42"
C8	50.00'	51.24'	58°42'46"
C9	50.00'	40.10'	45°56'49"
C10	50.00'	24.91'	28°32'47"
C11	50.00'	13.33'	15°16'13"
C12	50.00'	48.00'	55°00'00"
C13	50.00'	50.18'	57°30'00"
C14	50.00'	18.33'	21°00'00"

LINE DATA TABLE

LINE	BEARING	DISTANCE
L1	S45°44'17"E	8.97'
L2	S44°48'38"W	8.97'
L3	S45°43'22"E	8.97'
L4	S44°48'38"W	8.97'
L5	N45°10'47"W	8.97'
L6	N44°15'43"E	8.98'
L7	N00°27'52"W	4.36'
L8	N00°27'52"W	13.45'
L9	S89°54'53"E	8.81'
L10	N00°28'13"W	3.92'

RADIAL LINE DATA TABLE

LINE	BEARING
R1	S14°33'37"E
R2	S44°09'09"W
R3	N89°54'02"W
R4	S75°41'44"W
R5	N49°18'16"W
R6	N08°11'44"E



PREPARED BY:
DALE G. MELL
LAND SURVEYING

1030 Gettysburg Avenue, Suite 107
Clovis, California 93612
(559) 292-4046 • FAX 292-0832