



Prepared on Thu Feb 14 22:29:48 2019

# Street Names, Addresses and (Lot Numbers) for T4951



# MAP OF TRACT NO. 4951

PHASE III OF VESTING TENTATIVE TRACT NO. 4357  
(A PLANNED DEVELOPMENT)

IN THE CITY OF FRESNO, FRESNO COUNTY, CALIFORNIA  
SHEET 3 OF 3 SHEETS

SURVEYED AND PLATTED MARCH, 1997 BY RABE ENGINEERING INC.  
CIVIL ENGINEERS-LAND SURVEYORS 2021 N. GATEWAY BLVD., FRESNO CALIFORNIA 93727  
(559) 252-7223

CURVE	RADIUS	LENGTH	DELTA
C1	NOT USED		
C2	NOT USED		
C3	747.00'	44.28'	03°23'48"
C4	45.00'	8.95'	11°24'13"
C5	45.00'	13.90'	17°42'24"
C6	50.00'	26.23'	30°03'27"
C7	50.00'	40.13'	45°59'00"
C8	50.00'	40.13'	45°59'08"
C9	50.00'	22.86'	26°11'40"
C10	45.00'	22.86'	29°06'37"
C11	45.00'	17.85'	22°43'34"
C12	45.00'	13.40'	17°03'41"
C13	50.00'	34.18'	39°09'55"
C14	50.00'	44.50'	50°59'36"
C15	50.00'	45.00'	51°33'58"
C16	50.00'	45.00'	51°33'58"
C17	50.00'	43.45'	49°47'24"
C18	50.00'	14.39'	16°29'40"
C19	45.00'	31.25'	39°47'16"
C20	NOT USED		
C21	45.00'	22.86'	29°06'37"
C22	50.00'	129.35'	148°13'15"
C23	45.00'	31.25'	39°47'15"
C24	50.00'	226.52'	259°34'31"

LINE	DIRECTION	DISTANCE
L1	N89°43'52"E	20.86'
L2	N39°37'39"E	19.33'
L3	N46°45'40"W	21.00'
L4	N45°18'07"W	8.97'
L5	N44°41'53"E	8.97'
L6	N45°18'06"W	8.97'
L7	N44°41'54"E	8.97'
L8	N45°18'07"W	8.97'
L9	N89°41'54"E	16.32'
L10	N45°18'06"W	8.97'
L11	N44°41'53"E	8.97'
L12	N44°41'54"E	8.97'
L13	N45°18'06"W	8.97'
L14	N89°41'54"E	19.63'
L15	N18°08'29"E	22.49'
L16	N18°08'29"E	29.52'

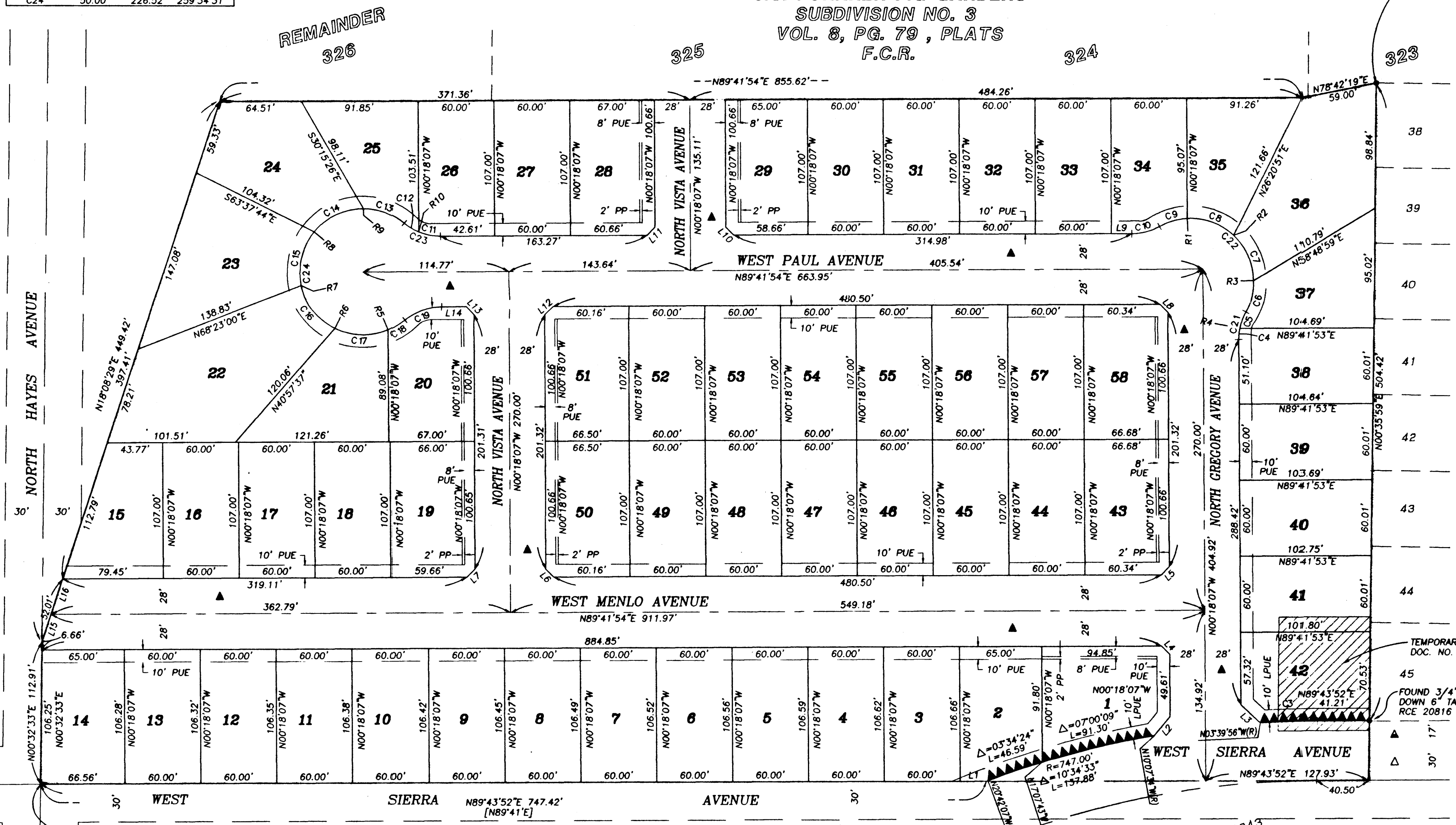
RADIAL	DIRECTION
R1	N03°13'04"W
R2	N42°46'05"E
R3	N88°45'04"E
R4	N78°53'54"W
R5	S23°35'43"E
R6	S26°11'42"W
R7	S77°45'40"W
R8	N50°40'22"W
R9	N00°19'14"E
R10	S22°25'28"W

J.C. FORKNER FIG GARDENS  
SUBDIVISION NO. 3  
VOL. 8, PG. 79, PLATS  
F.C.R.

FOUND 3/4" IRON PIPE  
UP 4" IN P.C.C. MONUMENT  
DOWN 12" BELOW GROUND

- LEGEND:
- - SET 3/4" IRON PIPE 30" LONG, 4" IN P.C.C. MONUMENT, DOWN 6" BELOW GROUND, TAGGED RCE 20816
  - - MONUMENT FOUND AND ACCEPTED AS NOTED
  - PPUE - PLANTING AND PUBLIC UTILITY EASEMENT NOW OFFERED FOR DEDICATION FOR PUBLIC USE
  - PUE - PUBLIC UTILITY EASEMENT NOW OFFERED FOR DEDICATION FOR PUBLIC USE
  - LPUE - LANDSCAPE AND PUBLIC UTILITY EASEMENT NOW OFFERED FOR DEDICATION FOR PUBLIC USE
  - PP - PLANTING EASEMENT NOW OFFERED FOR DEDICATION FOR PUBLIC USE
  - ▲ - NOW OFFERED FOR DEDICATION FOR PUBLIC STREET PURPOSES
  - ▲▲ - INDICATES RELINQUISHMENT OF DIRECT VEHICULAR ACCESS RIGHTS
  - ▲ - PREVIOUSLY DEDICATED FOR PUBLIC STREET PURPOSES BY TRACT NO. 4826 VOL. 63, PGS. 15-17 F.C.R. 1990 ORFC
  - △ - PREVIOUSLY DEDICATED FOR PUBLIC STREET PURPOSES PER MAP OF J.C. FORKNER'S FIG GARDENS SUBDIVISION NO. 3 VOL. 8, PG. 79 PLATS, F.C.R.
  - BLUE BORDER INDICATES THE LIMITS OF THIS SUBDIVISION

NOTE:  
SET 1" O.D. IRON PIPE 30" LONG,  
6" DOWN TAGGED RCE 20816 AT  
ALL LOT CORNERS AND THE BEGINNING  
AND END OF CURVES.



TRACT NO. 4826  
VOL 63, PAGES 15-17  
OF PLATS  
F.C.R.

ACCEPTED AS THE  
WEST 1/4 COR. SEC. 3 13/19  
FOUND 3/4" IRON PIPE 8" DOWN  
TAGGED R.C.E. 10782, T.O.F.

NOTE:  
THOSE PORTIONS OF NORTH HAYES AVENUE AND WEST SIERRA AVENUE  
PREVIOUSLY DEDICATED BY "J.C. FORKNER FIG GARDEN SUBDIVISION  
NO. 3" RECORDED IN VOLUME 8 OF PLATS AT PAGE 79 F.C.R. NOT  
DELINEATED ON THIS MAP ARE DEEMED ABANDON PURSUANT TO  
SECTION 66499.20 1/2 OF SUBDIVISION MAP ACT.

TRACT NO. 4343  
VOL 53, PAGES 51-53  
OF PLATS  
F.C.R.

