



Street Names, Addresses and (Lot Numbers) for T4945

Prepared on Tue Apr 02 14:35:28 2013



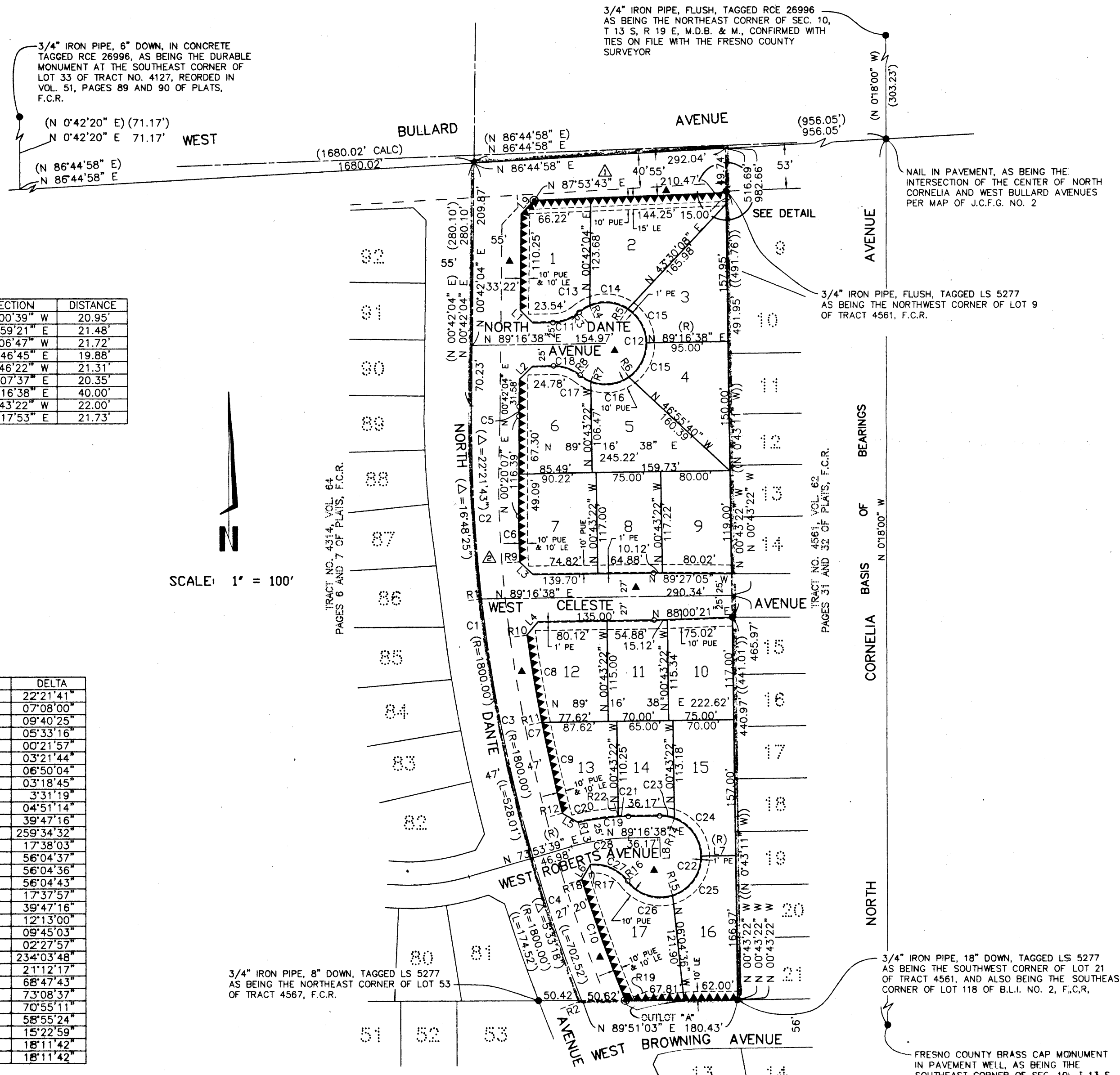
TRACT NO. 4945

IN THE CITY OF FRESNO, COUNTY OF FRESNO, STATE OF CALIFORNIA
 SURVEYED AND PLATTED IN JUNE 2000, BY GARY G. GIANNETTA
 SHEET TWO OF TWO SHEETS

RADIAL	DIRECTION
R1	S 83°34'04" W
R2	S 68°20'23" W
R3	N 40°30'38" W
R4	N 22°52'35" W
R5	N 33°12'02" E
R6	S 34°38'46" E
R7	S 21°25'57" W
R8	N 39°03'54" E
R9	S 86°58'23" W
R10	S 82°02'10" W
R11	S 78°43'25" W
R12	S 75°12'06" W
R13	N 12°56'22" W
R14	N 20°28'55" E
R15	S 17°34'45" E
R16	S 53°20'26" W
R17	N 05°34'59" W
R18	S 72°35'12" W
R19	S 67°43'58" W
R20	S 20°17'59" E
R21	N 2°06'17" W
R22	N 3°11'19" W

LINE	DIRECTION	DISTANCE
L1	N 45°00'39" W	20.95'
L2	N 44°59'21" E	21.48'
L3	N 47°06'47" W	21.72'
L4	N 40°46'45" E	19.88'
L5	N 59°46'22" W	21.31'
L6	N 30°07'37" E	20.35'
L7	N 89°16'38" E	40.00'
L8	N 00°43'22" W	22.00'
L9	N 44°17'53" E	21.73'

CURVE	RADIUS	LENGTH	TANGENT	DELTA
C1	1800.00'	702.51'	355.78'	22°21'41"
C2	1800.00'	224.10'	112.19'	07°08'00"
C3	1800.00'	303.91'	152.32'	09°40'25"
C4	1800.00'	174.50'	87.32'	05°33'16"
C5	1745.00'	11.14'	5.57'	00°21'57"
C6	902.35'	52.95'	26.48'	03°21'44"
C7	1753.00'	209.11'	104.68'	06°50'04"
C8	1753.00'	101.35'	50.69'	03°18'45"
C9	1753.00'	107.76'	53.90'	3°31'19"
C10	1753.00'	148.51'	74.30'	04°51'14"
C11	48.00'	33.33'	17.37'	39°47'16"
C12	47.00'	212.93'	56.44'	25°34'32"
C13	47.00'	14.47'	7.29'	17°38'03"
C14	47.00'	46.00'	25.03'	56°04'37"
C15	47.00'	46.00'	25.03'	56°04'36"
C16	47.00'	46.00'	25.03'	56°04'43"
C17	47.00'	14.46'	7.29'	17°37'57"
C18	48.00'	33.33'	17.37'	39°47'16"
C19	275.00'	58.64'	29.43'	12°13'00"
C20	275.00'	46.80'	23.46'	09°45'03"
C21	275.00'	11.84'	5.92'	02°27'57"
C22	47.00'	192.00'	92.12'	23°40'34"
C23	47.00'	17.39'	8.80'	21°12'17"
C24	47.00'	56.43'	32.18'	68°47'43"
C25	47.00'	60.00'	34.87'	73°08'37"
C26	47.00'	58.18'	33.48'	70°55'11"
C27	48.00'	49.36'	27.11'	58°55'24"
C28	250.00'	67.12'	33.76'	15°22'59"
C29	30.00'	9.53'	4.80'	18°11'42"
C30	10.00'	3.18'	1.60'	18°11'42"



- LEGEND:**
- MONUMENT FOUND AND ACCEPTED AS NOTED
 - SET 3/4" IRON PIPE, 30" LONG, 6" DOWN BELOW GROUND, TAGGED R.C.E. 26996
 - ⊙ SET 3/4" IRON PIPE, 30" LONG, 4" UP IN 6" DIAMETER x 30" P.C.C. MONUMENT, DOWN 6" BELOW GROUND, TAGGED R.C.E. 26996
 - ▲ NOW OFFERED FOR DEDICATION FOR PUBLIC STREET PURPOSES
 - ▲▲▲▲ INDICATES RELINQUISHMENT OF DIRECT ACCESS RIGHTS
 - △ PREVIOUSLY DEDICATED FOR PUBLIC STREET PURPOSES AS PER MAP OF J.C. FORKNER FIGARDEN SUBDIVISION NO. 2 RECORDED IN VOLUME 8, PG. 66 OF PLATS, F.C.R.
 - △ PREVIOUSLY DEEDED FOR PUBLIC STREET PURPOSES BY DEED RECORDED MARCH 4, 1994 AS DOCUMENT NO. 94036862
 - () RECORD DATA AS PER TRACT NO. 4314, RECORDED IN VOLUME 64, PAGES 6 AND 7 OF PLATS, FRESNO COUNTY RECORDS
 - (()) RECORD DATA AS PER TRACT NO. 4561, RECORDED IN VOLUME 62, PAGES 31 AND 32 OF PLATS, FRESNO COUNTY RECORDS
 - LE LANDSCAPE EASEMENT NOW OFFERED FOR DEDICATION FOR PUBLIC USE
 - PE PEDESTRIAN EASEMENT NOW OFFERED FOR DEDICATION FOR PUBLIC USE
 - PUE PUBLIC UTILITY EASEMENT NOW OFFERED FOR DEDICATION FOR PUBLIC USE
 - BLUE BORDER INDICATES THE LIMITS OF THIS SUBDIVISION

NOTE:

- SET 3/4" IRON PIPE, 6" DOWN, TAGGED RCE 26996 AT ALL LOT CORNERS

BASIS OF BEARINGS

THE EAST LINE OF SECTION 10, T 13 S, R 19 E, M.D.B. & M. TAKEN AS N 0°18'00" W AS PER MAP OF TRACT NO. 3116, RECORDED IN VOLUME 35, PAGES 27, 28, 29 AND 30 OF PLATS, FRESNO COUNTY RECORDS

