



Prepared on Tue Jun 06 23:43:46 2017

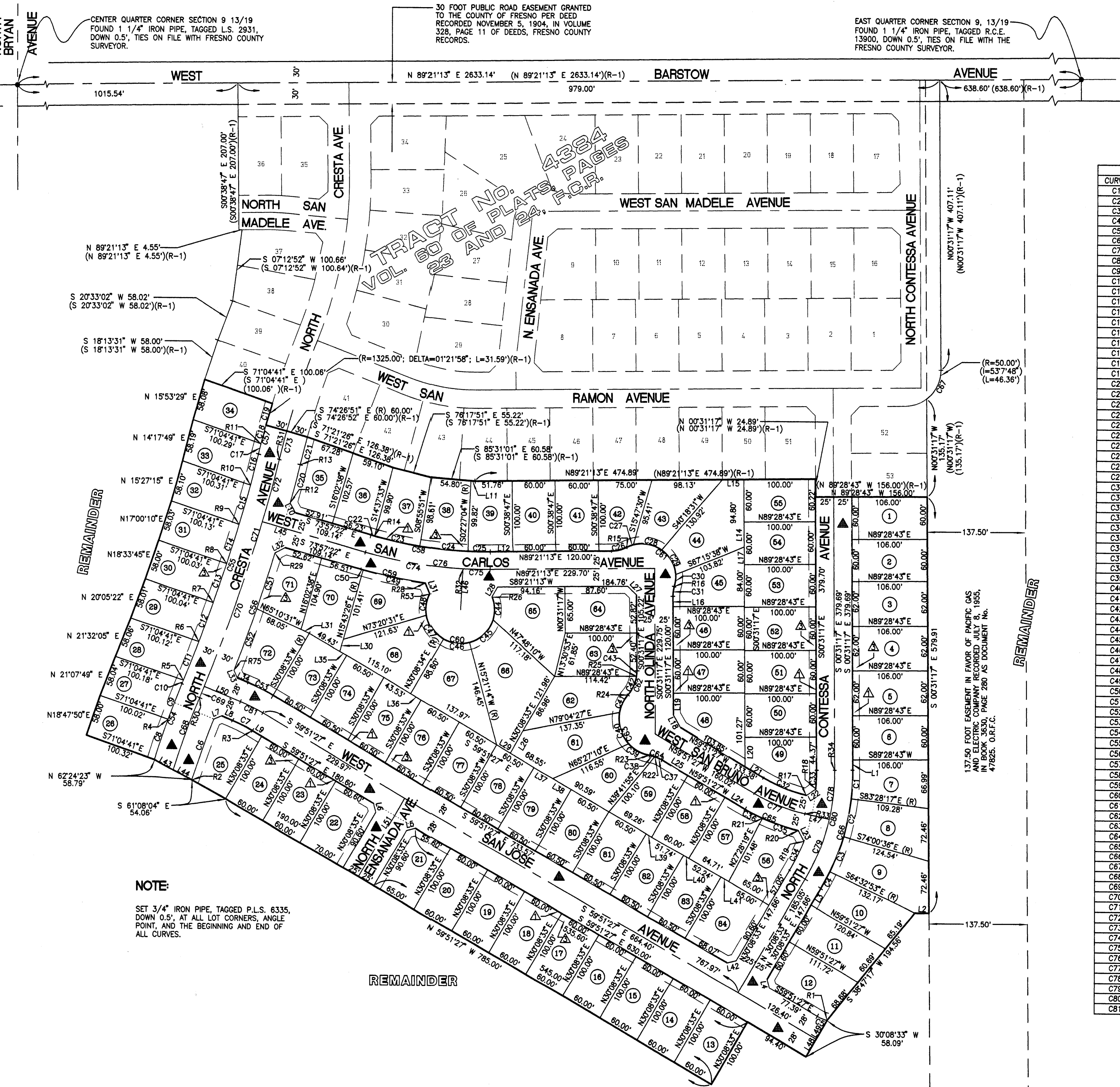
Street Names, Addresses and (Lot Numbers) for T4944



TRACT No. 4944

PHASE 2 OF TENTATIVE TRACT No. 4384

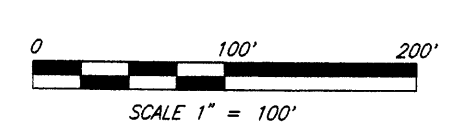
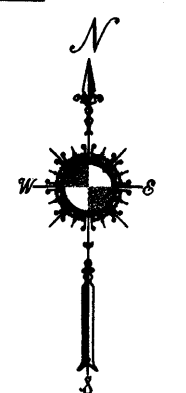
IN THE CITY OF FRESNO, FRESNO COUNTY, STATE OF CALIFORNIA.
 SURVEYED AND PLATTED IN OCTOBER 1999, BY ESPINOSA SURVEYING.
 SHEET 2 OF 2 SHEETS.



CURVE	DELTA	LENGTH	RADIUS
C1	7°03'00"	39.99'	325.00'
C2	9°27'41"	53.67'	325.00'
C3	9°27'43"	53.67'	325.00'
C4	4°41'26"	26.61'	325.00'
C5	17°41'28"	14.82'	48.00'
C6	3°53'30"	88.30'	1300.00'
C7	8°01'10"	31.07'	222.00'
C8	2°30'30"	58.01'	1325.00'
C9	2°17'35"	53.03'	1325.00'
C10	0°07'35"	5.02'	2275.00'
C11	1°27'44"	58.06'	2275.00'
C12	1°27'39"	58.01'	2275.00'
C13	1°27'38"	58.00'	2275.00'
C14	1°27'42"	58.03'	2275.00'
C15	1°27'47"	58.09'	2275.00'
C16	1°08'30"	44.00'	2275.00'
C17	0°38'49"	14.19'	1325.00'
C18	1°08'50"	26.53'	1325.00'
C19	1°21'54"	31.57'	1325.00'
C20	1°21'06"	55.08'	2335.00'
C21	1°45'39"	38.87'	1265.00'
C22	0°31'36"	5.29'	575.00'
C23	6°29'08"	65.09'	575.00'
C24	6°34'50"	66.04'	575.00'
C25	3°05'51"	31.08'	575.00'
C26	26°31'32"	22.22'	48.00'
C27	1°56'38"	9.80'	47.00'
C28	50°22'05"	41.32'	47.00'
C29	50°22'01"	41.32'	47.00'
C30	20°39'27"	16.94'	47.00'
C31	16°41'08"	13.98'	48.00'
C32	16°33'38"	64.97'	225.00'
C33	5°25'11"	26.01'	275.00'
C34	09°38'42"	46.29'	275.00'
C35	10°59'16"	52.74'	275.00'
C36	5°43'10"	27.45'	275.00'
C37	13°02'07"	11.37'	50.00'
C38	8°31'28"	7.44'	50.00'
C39	38°15'42"	33.39'	50.00'
C40	52°28'53"	45.80'	50.00'
C41	31°34'05"	27.55'	50.00'
C42	32°39'44"	28.50'	50.00'
C43	8°44'50"	7.63'	50.00'
C44	38°34'00"	31.64'	47.00'
C45	57°49'49"	47.44'	47.00'
C46	45°29'49"	37.32'	47.00'
C47	50°21'48"	41.31'	47.00'
C48	37°13'11"	30.53'	47.00'
C49	8°11'43"	89.40'	625.00'
C50	0°19'12"	3.49'	625.00'
C51	2°01'59"	82.86'	2335.00'
C52	2°14'41"	91.48'	2335.00'
C53	8°01'11"	38.91'	278.00'
C54	4°48'05"	111.04'	1325.00'
C55	8°32'35"	339.21'	2275.00'
C56	4°16'40"	174.34'	2335.00'
C57	3°07'33"	72.29'	1325.00'
C58	16°41'25"	167.50'	575.00'
C59	8°30'55"	92.89'	625.00'
C60	22°28'37"	188.24'	47.00'
C61	133°20'10"	109.38'	47.00'
C62	41°24'34"	36.13'	50.00'
C63	122°18'39"	106.74'	50.00'
C64	21°33'35"	18.81'	50.00'
C65	16°42'27"	80.19'	275.00'
C66	30°39'50"	173.94'	325.00'
C67	5°30'55"	46.37'	50.00'
C68	4°39'14"	105.60'	1300.00'
C69	0°24'47"	16.62'	2305.00'
C70	6°04'45"	244.58'	2305.00'
C71	8°44'40"	351.79'	2305.00'
C72	2°15'08"	90.61'	2305.00'
C73	1°45'39"	39.80'	1295.00'
C74	13°04'55"	137.00'	600.00'
C75	3°36'30"	37.78'	600.00'
C76	16°41'25"	174.78'	600.00'
C77	17°26'41"	76.12'	250.00'
C78	13°13'09"	69.22'	300.00'
C79	17°26'41"	91.34'	300.00'
C80	30°39'50"	160.58'	300.00'
C81	8°01'10"	34.99'	250.00'

LINE	LENGTH	BEARING
L1	13.69'	N00°31'17"W
L2	20.00'	S89°28'43"E
L3	27.06'	S30°08'33"E
L4	13.28'	N14°51'27"W
L5	13.29'	S75°08'33"E
L6	13.29'	N14°51'27"W
L7	12.33'	S67°47'18"E
L8	16.04'	N67°52'37"E
L9	14.97'	N59°51'27"W
L10	16.66'	S29°20'04"E
L11	5.78'	N85°31'01"W
L12	31.84'	S89°21'13"E
L13	17.41'	S89°21'13"E
L14	34.80'	S00°31'17"E
L15	30.00'	S89°21'13"E
L16	14.21'	N00°31'17"W
L17	25.20'	N00°31'17"W
L18	21.55'	N30°11'22"W
L19	29.58'	N00°31'17"W
L20	40.07'	N00°31'17"W
L21	29.53'	N59°51'27"W
L22	16.49'	S54°30'30"W
L23	16.53'	N28°59'44"W
L24	32.58'	N59°51'27"W
L25	41.36'	N59°51'27"W
L26	35.00'	N30°08'33"E
L27	17.52'	N45°35'02"W
L28	16.36'	S28°41'04"W
L29	22.36'	N59°51'27"W
L30	17.50'	N15°43'26"E
L31	12.88'	S65°10'31"E
L32	16.66'	N61°25'21"E
L33	12.39'	N23°16'26"W
L34	16.06'	N67°52'37"E
L35	11.07'	N59°51'27"W
L36	16.97'	N59°51'27"W
L37	30.41'	N59°51'27"W
L38	39.09'	N59°51'27"W
L39	8.76'	N59°51'27"W
L40	8.26'	N59°51'27"W
L41	12.47'	N59°51'27"W
L42	13.29'	N75°08'33"E
L43	29.38'	N62°24'23"W
L44	29.41'	N62°24'23"W
L45	150.71'	N75°08'33"E
L46	57.49'	N02°57'43"E (R)
L47	35.00'	N77°18'08"W
L48	28.00'	N30°08'33"E
L49	30.09'	N30°08'33"E
L50	54.59'	N67°52'37"E
L51	128.00'	N30°08'33"E

LINE	BEARING
R1	N13°09'27"E
R2	N71°43'43"W
R3	N30°08'33"E
R4	N69°57'31"W
R5	S67°47'30"E
R6	S69°15'14"E
R7	S70°42'54"E
R8	S72°10'32"E
R9	S73°38'14"E
R10	S75°06'06"E
R11	N75°35'41"W
R12	S74°51'24"E
R13	N76°12'30"W
R14	S15°31'02"W
R15	N27°10'19"W
R16	S73°50'09"E
R17	N13°35'55"E
R18	S85°06'06"E
R19	S69°30'09"E
R20	S13°26'06"W
R21	S24°25'23"W
R22	N17°06'26"E
R23	S08°34'58"W
R24	N49°06'23"W
R25	S08°47'25"E
R26	N68°14'57"E
R27	N62°16'26"W
R28	S07°31'43"W
R29	S73°03'43"E
R30	N67°27'50"W
R31	S76°12'30"E
R32	S02°57'43"W
R33	S12°41'52"W
R34	N89°28'43"E



- LEGEND:**
- THE BLUE BORDER INDICATES THE LIMITS OF THIS SUBDIVISION.
 - MONUMENTS FOUND AND ACCEPTED - AS NOTED.
 - SET 3/4" x 30" IRON PIPE, TAGGED L.S. 6335, DOWN 0.5', EXCEPT WHERE OTHERWISE NOTED.
 - ▲ INDICATES 10 FT. PUBLIC UTILITY EASEMENT NOW OFFERED FOR DEDICATION FOR PUBLIC USE.
 - ▲ INDICATES 1 FT. PEDESTRIAN EASEMENT NOW OFFERED FOR DEDICATION FOR PUBLIC USE.
 - (R-1) RECORD DATA PER TRACT MAP No. 4384 IN VOLUME 60 OF PLATS AT PAGE 23 & 24, FRESNO COUNTY RECORDS.
 - L12 REFER TO LINE TABLE.
 - C12 REFER TO CURVE TABLE.
 - R12 REFER TO RADIAL TABLE.
 - (R) INDICATES RADIAL BEARING.
 - ▲ INDICATES NOW OFFERED FOR DEDICATION FOR PUBLIC STREET PURPOSES.
 - ▲ INDICATES AN EASEMENT AND RIGHT-OF-WAY FOR PUBLIC UTILITY PURPOSES PER DEED RECORDED DECEMBER 20, 1995, AS DOCUMENT No. 95162859, O.R.F.C.

NOTE:
 SET 3/4" IRON PIPE, TAGGED P.L.S. 6335, DOWN 0.5', AT ALL LOT CORNERS; ANGLE POINT, AND THE BEGINNING AND END OF ALL CURVES.

TRACT No. 4384
VOL. 60 OF PLATS, P.C.R.
PAGES 23 AND 24.

30 FOOT PUBLIC ROAD EASEMENT GRANTED TO THE COUNTY OF FRESNO PER DEED RECORDED NOVEMBER 5, 1904, IN VOLUME 328, PAGE 11 OF DEEDS, FRESNO COUNTY RECORDS.

EAST QUARTER CORNER SECTION 9, 13/19 FOUND 1 1/4" IRON PIPE, TAGGED R.C.E. 13900, DOWN 0.5', TIES ON FILE WITH THE FRESNO COUNTY SURVEYOR.

137.50 FOOT EASEMENT IN FAVOR OF PACIFIC GAS AND ELECTRIC COMPANY RECORDED JULY 8, 1955, IN BOOK 3650, PAGE 280 AS DOCUMENT No. 47825. O.R.F.C.

ESPINOSA SURVEYING

5654 S. Elm Ave.
 Easton, CA 93706
 Tel. 559.442.0883
 Fax 559.442.0884

ESAL
 esp@eagle.net

DATE OF SURVEY	10-21-1999
ESP JOB No.	99067CX
DRAWN BY	M.A./J.C.
REVISION DATE	10-27-1999
	01-24-2000
	02-08-2000
	02-29-2000
	05-05-2000