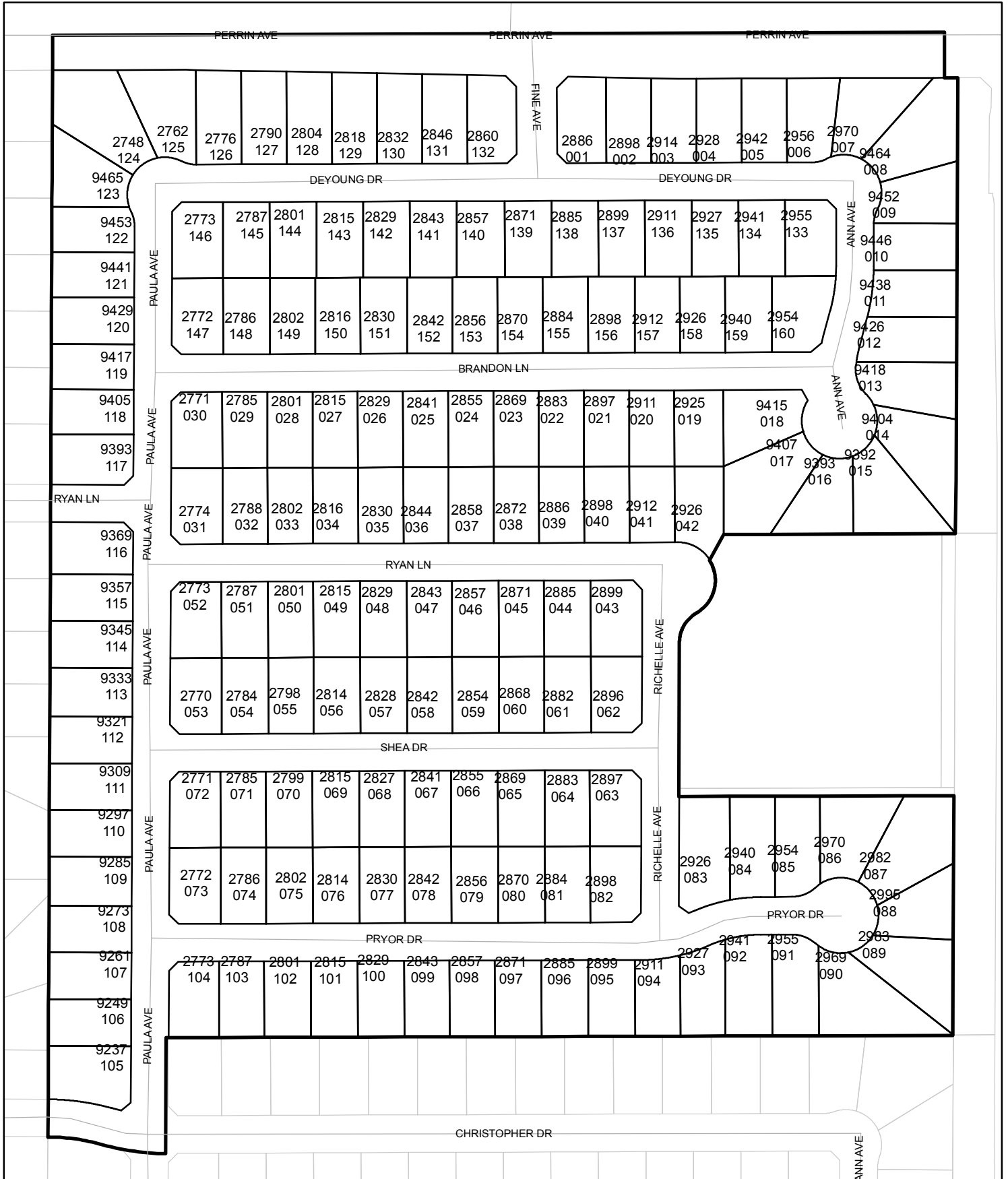




Street Names, Addresses and (Lot Numbers) for T4911

Prepared on Wed Jun 13 22:32:27 2018



MAP OF TRACT NO. 4911

IN THE CITY OF FRESNO
FRESNO COUNTY, CALIFORNIA
SURVEYED AND PLATTED IN FEBRUARY, 2001
BY EDWARD D. DUNKEL AND ASSOCIATES

CONSISTING OF THREE SHEETS
SHEET 2 OF 3 SHEETS

BASIS OF BEARINGS

THE EAST LINE OF THE SOUTHEAST QUARTER OF SEC. 24, T.12 S., R.20 E., M.D.B. & M. WAS TAKEN TO BE S 00°00'26" E, (SAID LINE ALSO BEING THE CENTERLINE OF NORTH WILLOW AVENUE), PER PARCEL MAP NO. 5841, RECORDED IN BOOK 38 OF PARCEL MAPS AT PAGE 2, FRESNO COUNTY RECORDS.

LEGEND

- EXISTING MONUMENT FOUND AND ACCEPTED OR AS NOTED.
 - SET 1" O.D. IRON PIPE, DOWN 6" AND TAGGED PLS-8619, EXCEPT AS NOTED.
 - SET 1" O.D. IRON PIPE, 30" LONG, UP 4", IN 6" DIA. x 30" CONCRETE MONUMENT DOWN 6" AND TAGGED PLS-8619, EXCEPT AS NOTED.
 - () RECORD DATA PER TRACT MAP NO. 4741, RECORDED IN VOLUME 61 OF PLATS AT PAGES 5-8, FRESNO COUNTY RECORDS
 - { } RECORD DATA PER PARCEL MAP NO. 5841, RECORDED IN BOOK 38 OF PARCEL MAPS AT PAGE 2, FRESNO COUNTY RECORDS
 - PE PEDESTRIAN EASEMENT NOW OFFERED FOR DEDICATION FOR PUBLIC USE.
 - PUE PUBLIC UTILITY EASEMENT NOW OFFERED FOR DEDICATION FOR PUBLIC USE.
 - LE LANDSCAPE EASEMENT NOW OFFERED FOR DEDICATION FOR PUBLIC USE.
 - ▲▲▲▲ INDICATES RELINQUISHMENT OF DIRECT VEHICULAR ACCESS RIGHTS.
 - BLUE BORDER INDICATES THE LIMITS OF THIS SUBDIVISION.
 - △ INDICATES PORTIONS NOW OFFERED FOR DEDICATION FOR PUBLIC STREET PURPOSES.
- * NOTE *
- 1" O.D. x 30" LONG IRON PIPE TO BE SET 6" DOWN AND TAGGED PLS-8619 AT ALL LOT CORNERS, ANGLE POINTS, BEGINNING OF CURVES AND END OF CURVES, OR AS NOTED WITHIN THE TIME SPECIFIED IN THE SUBDIVISION AGREEMENT FOR THIS TRACT.

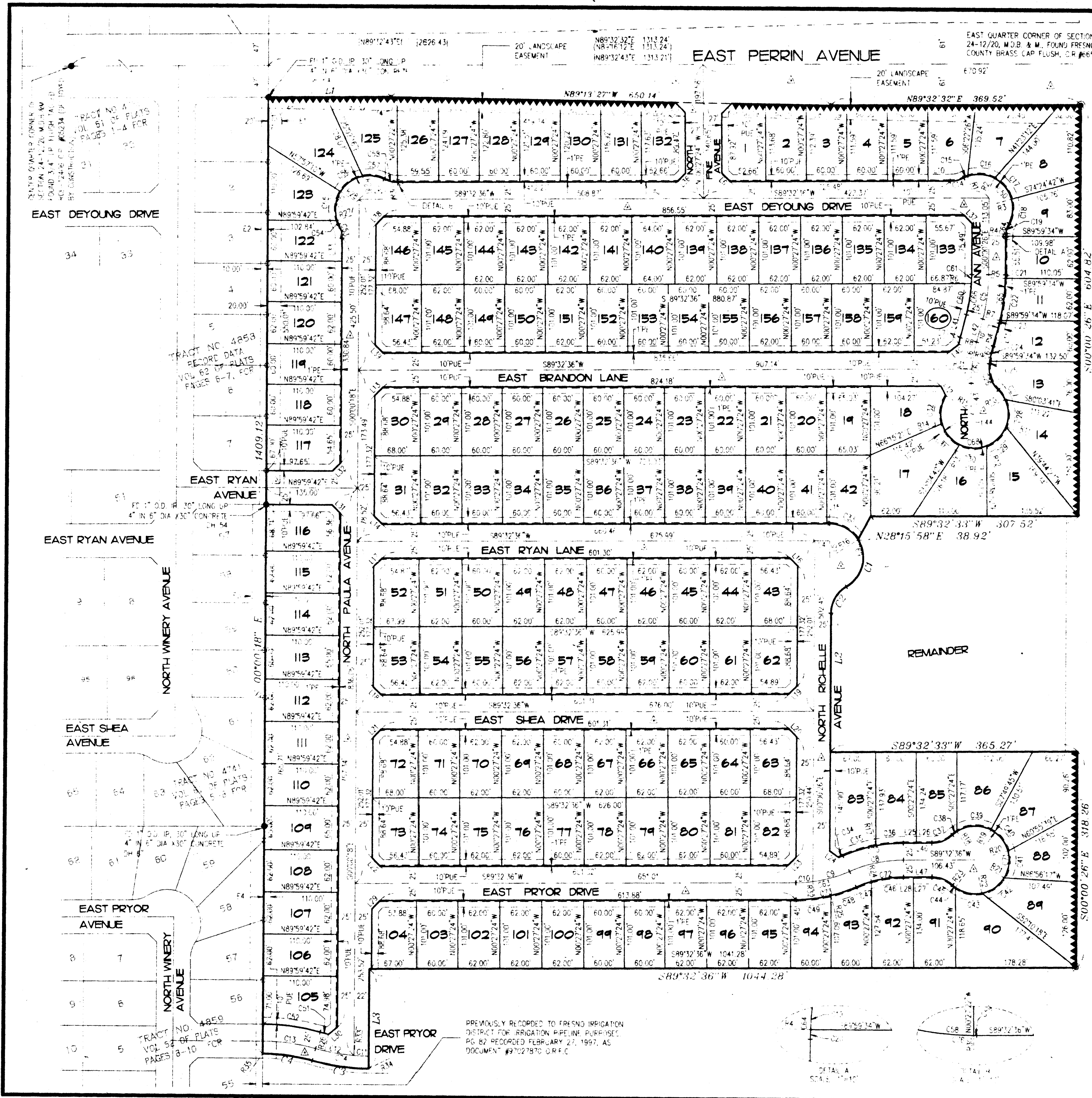
- E1 20' IRRIGATION PIPELINE EASEMENT GRANTED TO FRESNO IRRIGATION DISTRICT BY GRANT OF EASEMENT, RECORDED FEBRUARY 27, 1997, AS DOCUMENT #97027871 O.R.F.C.
- E2 10' IRRIGATION PIPELINE EASEMENT GRANTED TO FRESNO IRRIGATION DISTRICT BY GRANT OF EASEMENT, RECORDED FEBRUARY 27, 1997, AS DOCUMENT #97027886 O.R.F.C.
- E3 20' IRRIGATION PIPELINE EASEMENT GRANTED TO FRESNO IRRIGATION DISTRICT BY GRANT OF EASEMENT, RECORDED FEBRUARY 27, 1997, AS DOCUMENT #97027870 O.R.F.C.
- E4 10' IRRIGATION PIPELINE EASEMENT GRANTED TO FRESNO IRRIGATION DISTRICT BY GRANT OF EASEMENT, RECORDED FEBRUARY 12, 1998, AS DOCUMENT #98021373 O.R.F.C.

SCALE 1" = 100'

REVISIONS

10/19/01 DTH

PC#2-STATHM - 5/21/01
DUNKEL CADFILE: 97092FM



PREVIOUSLY RECORDED TO FRESNO IRRIGATION DISTRICT FOR IRRIGATION PIPELINE PURPOSES. PG 82 RECORDED FEBRUARY 27, 1997, AS DOCUMENT #97027870 O.R.F.C.

NORTH EAST CORNER OF SECTION 24-12/20 M.D.B. & M. FOUND FRESNO COUNTY BRASS CAP MONUMENT FLUSH C.R. #5929

