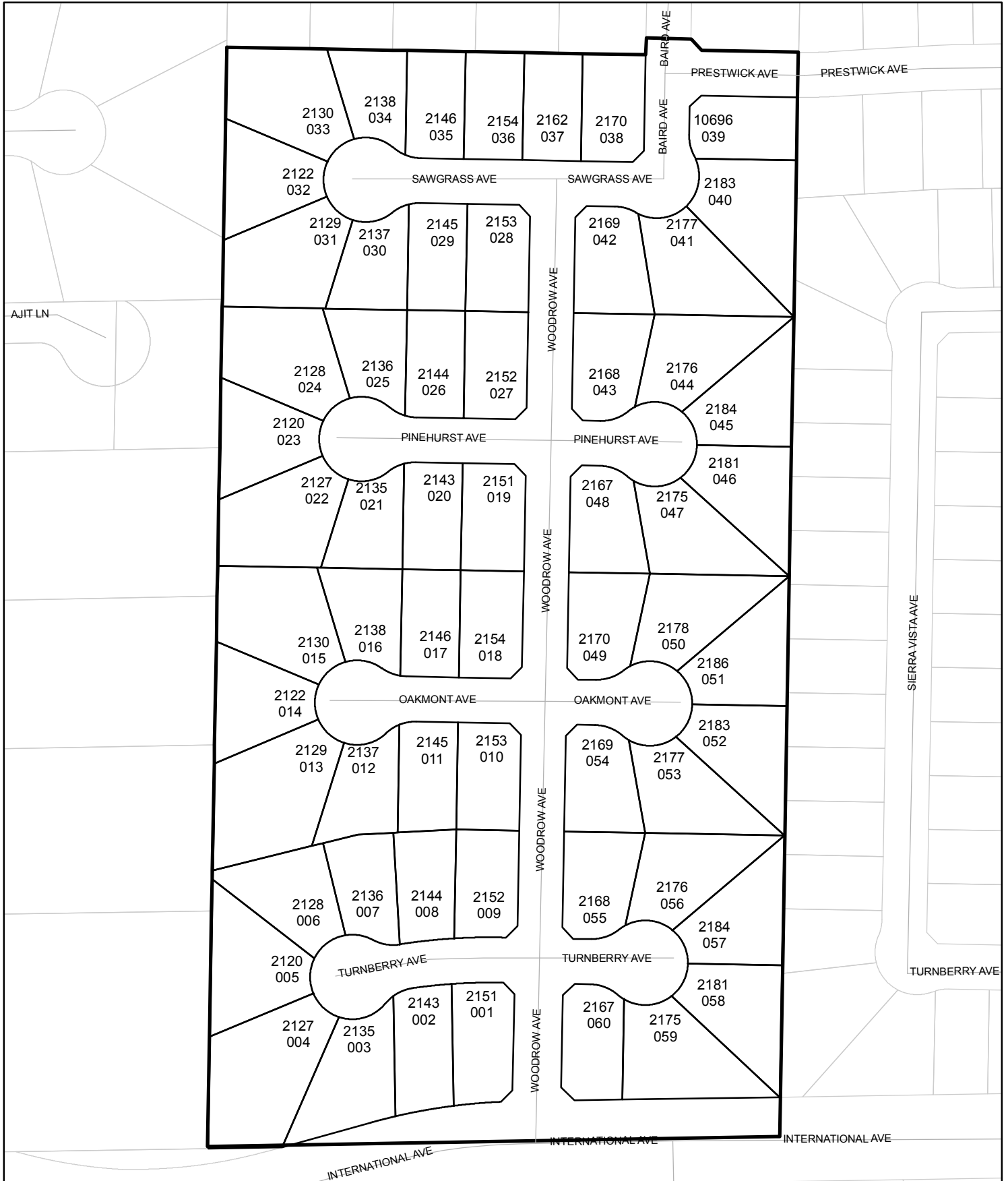




# Street Names, Addresses and (Lot Numbers) for T4903

Prepared on Thu Feb 14 22:32:19 2019



# TRACT NO. 4903

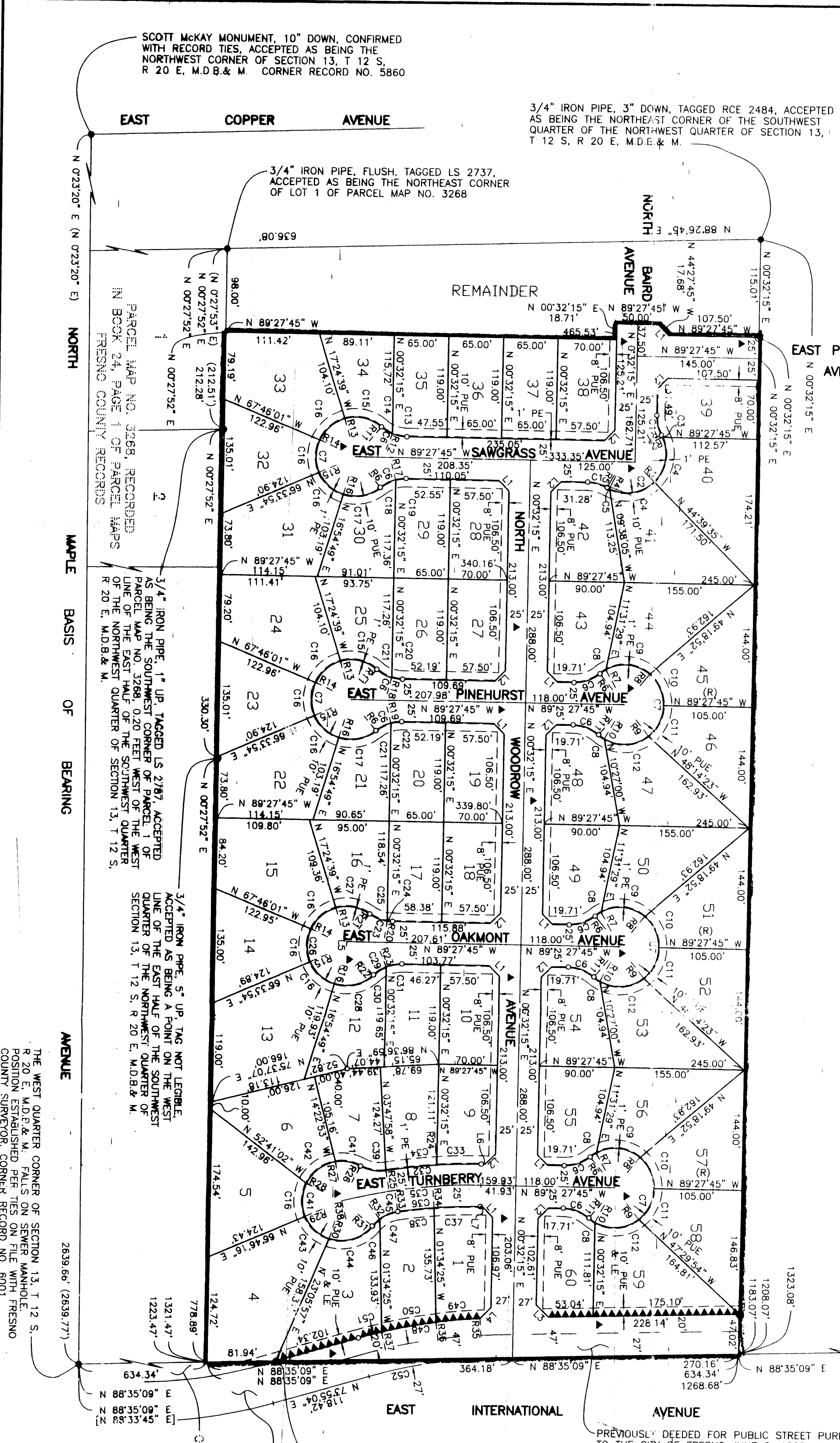
IN THE CITY OF FRESNO, COUNTY OF FRESNO, STATE OF CALIFORNIA  
 SURVEYED AND PLATTED IN JANUARY 2002, GARY G. GIANNETTA  
 SHEET TWO OF TWO SHEETS

CURVE	RADIUS	LENGTH	TANGENT	DELTA
C1	48.00	24.39	12.46	29.0837
C2	47.00	121.59	165.11	148.1314
C3	47.00	2.99	1.49	3.6826
C4	47.00	57.69	33.11	70.1937
C5	47.00	3.22	1.61	0.35534
C6	48.00	33.33	17.37	39.4716
C7	47.00	212.93	56.44	259.3432
C8	47.00	8.60	4.31	10.2821
C9	47.00	55.86	31.76	68.0553
C10	47.00	42.00	22.52	51.1202
C11	47.00	42.00	22.52	51.1201
C12	47.00	55.86	31.76	68.0554
C13	48.00	17.86	9.03	21.1848
C14	48.00	15.48	7.81	18.2828
C15	47.00	46.33	23.37	56.4303
C16	47.00	40.00	21.30	48.4544
C17	47.00	46.41	23.29	56.3417
C18	48.00	20.48	10.94	24.4533
C19	48.00	13.93	6.93	15.0145
C20	48.00	36.36	18.34	37.2839
C21	48.00	19.97	9.94	24.1818
C22	48.00	28.16	15.02	33.2859
C23	48.00	6.64	3.32	0.74522
C24	48.00	22.52	11.47	26.8310
C25	47.00	212.54	56.91	259.0607
C26	47.00	42.44	22.73	51.4422
C27	47.00	50.10	27.73	61.0433
C28	47.00	37.11	19.54	44.1732

CURVE	RADIUS	LENGTH	TANGENT	DELTA
C30	48.00	17.87	9.04	21.1947
C31	48.00	19.24	9.75	22.5744
C32	667.14	13.84	57.08	4.3637
C33	667.14	53.13	26.58	43.347
C34	667.14	60.71	30.38	51.2350
C35	642.14	167.20	84.08	145.508
C36	617.14	98.61	49.41	145.508
C37	617.14	55.15	27.59	90.917
C38	617.14	43.48	21.74	40.205
C39	48.00	31.24	16.19	37.1709
C40	47.00	212.80	56.59	259.2513
C41	47.00	30.90	15.55	37.4074
C42	47.00	45.00	24.39	54.5124
C43	47.00	40.00	21.30	48.4545
C44	47.00	56.90	32.52	69.2156
C45	48.00	35.82	18.79	42.4524
C46	48.00	12.31	6.19	14.4145
C47	48.00	23.51	12.00	28.0339
C48	647.00	147.13	73.89	130.147
C49	647.00	52.92	26.42	44.038
C50	647.00	65.95	32.95	05.4954
C51	647.00	28.47	14.24	23.115
C52	600.00	153.60	77.22	144.005

SCALE: 1" = 100'

3/4" IRON PIPE, FLUSH WITH ASPHALT, TAGGED R.C.E. 19789, ACCEPTED AS BEING THE CENTER QUARTER CORNER OF SECTION 13, T 12 S, R 20 E, M.D.B. & M.



3/4" IRON PIPE, FLUSH, TAGGED LS 2737, ACCEPTED AS BEING THE NORTHEAST CORNER OF LOT 1 OF PARCEL MAP NO. 3268

3/4" IRON PIPE, 3" DOWN, TAGGED RCE 2484, ACCEPTED AS BEING THE NORTHEAST CORNER OF THE SOUTHWEST QUARTER OF THE NORTHWEST QUARTER OF SECTION 13, T 12 S, R 20 E, M.D.B. & M.

3/4" IRON PIPE, 4" DOWN, TAGGED R.C.E. 19789, ACCEPTED AS BEING ON THE SOUTH LINE OF THE NORTH HALF OF SECTION 13, T 12 S, R 20 E, M.D.B. & M.

PREVIOUSLY DEDICATED FOR PUBLIC STREET PURPOSES AS PER MAP OF TRACT 4432 VOL. 59, P.S. 11, 12 & 13 OF PLATS, F.C.R.

PREVIOUSLY DEDICATED FOR PUBLIC STREET PURPOSES TO THE CITY OF FRESNO JUNE 6, 1995 AS DOC. NO. 95067732, F.C.R.

THE WEST QUARTER CORNER OF SECTION 13, T 12 S, R 20 E, M.D.B. & M. FALLS ON SEWER MAINHOLE POSITION ESTABLISHED PER TIES ON FILE WITH FRESNO COUNTY SURVEYOR, CORNER RECORD NO. 8001

**LEGEND:**

- MONUMENT FOUND AND ACCEPTED AS NOTED
- SET 3/4" IRON PIPE, 30" LONG, 6" DOWN, BELOW GROUND, TAGGED R.C.E. 26996
- SET 3/4" IRON PIPE, 30" LONG, 4" UP IN 6" DIAMETER x 30" P.C.C. MONUMENT, DOWN 6" BELOW GROUND, TAGGED R.C.E. 26996
- NOW OFFERED FOR DEDICATION FOR PUBLIC STREET PURPOSES
- INDICATES RELINQUISHMENT OF DIRECT ACCESS RIGHTS
- RECORD DATA AS PER PARCEL MAP NO. 3268, RECORDED IN BOOK 24, PAGE 1 OF PARCEL MAPS, FRESNO COUNTY RECORDS
- RECORD DATA AS PER TRACT NO. 4432, RECORDED IN VOLUME 59, PAGES 11, 12 & 13 OF PLATS, FRESNO COUNTY RECORDS
- PE PEDESTRIAN EASEMENT NOW OFFERED FOR DEDICATION FOR PUBLIC USE
- PUE PUBLIC UTILITY EASEMENT NOW OFFERED FOR DEDICATION FOR PUBLIC USE
- LE LANDSCAPE EASEMENT NOW OFFERED FOR DEDICATION FOR PUBLIC USE
- (CALC) CALCULATED FROM RECORD DATA
- BLUE BORDER INDICATES THE LIMITS OF THIS SUBDIVISION

**NOTE:**

SET 3/4" IRON PIPE, 3" DOWN, TAGGED RCE 26996 AT ALL LOT CORNERS

LINE	DIRECTION	DISTANCE
L1	S 44°27'45" E	17.68
L2	N 45°32'15" E	17.68
L3	S 45°26'18" E	20.85
L4	N 44°01'09" E	18.14
L5	N 07°32'15" E	5.00
L6	N 89°27'45" E	4.43
L7	N 89°27'45" W	2.43

RADIUS	DIRECTION
R1	N 61°25'37" E
R2	N 65°04'04" E
R3	S 44°36'19" W
R4	S 25°43'18" W
R5	S 29°38'52" W
R6	N 89°15'01" W
R7	N 28°45'40" W
R8	N 39°20'13" E
R9	S 36°15'44" E
R10	S 40°19'31" W
R11	S 40°19'31" W
R12	N 21°51'03" E
R13	N 16°23'32" W
R14	N 66°05'00" W
R15	S 66°05'00" W
R16	S 17°19'18" E
R17	S 17°19'18" E
R18	N 16°01'13" E
R19	S 14°56'44" E
R20	N 08°27'40" E
R21	N 35°20'50" E
R22	S 43°46'17" E
R23	S 22°28'30" E
R24	N 04°01'32" W
R25	N 91°42'22" W
R26	N 87°02'47" E
R27	N 66°30'15" W
R28	N 66°30'15" W
R29	S 1°29'26" W
R30	S 1°29'26" W
R31	N 31°22'26" W
R32	N 36°40'41" W
R33	N 83°17'02" W
R34	N 04°34'57" W
R35	N 05°03'09" W
R36	N 07°43'47" W
R37	N 13°32'47" W
R38	N 14°22'53" W