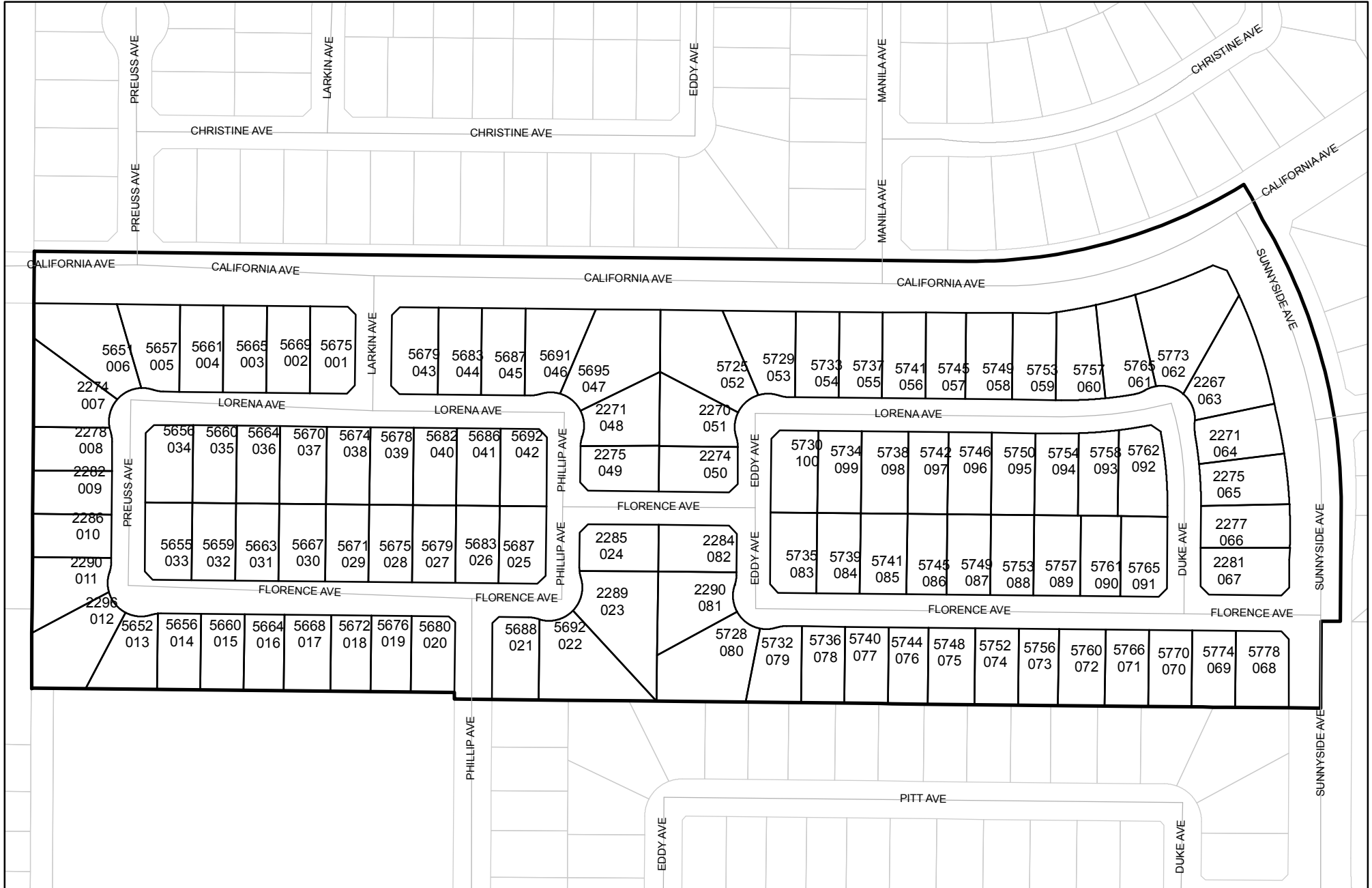




Prepared on Wed Jun 13 22:33:11 2018

Street Names, Addresses and (Lot Numbers) for T4902



NORTHWEST CORNER SECTION 16, 14/21
FOUND F.C.B.M. IN WELL 4" DOWN

NORTH QUARTER CORNER SECTION 16,
14/21, FOUND 3/4" IRON PIPE 6"
DOWN, STAMPED LS 5096

MAP OF TRACT NO. 4902

PHASE III OF TENTATIVE TRACT NO. 4570

IN THE CITY OF FRESNO
FRESNO COUNTY, CALIFORNIA
SURVEYED AND PLATTED IN FEBRUARY, 1998
BY EDWARD D. DUNKEL AND ASSOCIATES

CONSISTING OF THREE SHEETS
SHEET 2 OF 3 SHEETS

SEE SHEET 3 FOR LEGEND
AND BASIS OF BEARINGS

LOT 4

LINE TABLE

LINE	LENGTH	BEARING
L1	80.29	S29°48'23"E
L2	30.00	N89°47'46"W
L3	9.46	S00°03'07"E
L4	49.72	N29°48'19"W
L5	16.54	S44°47'26"E
L6	17.46	S45°12'34"W
L7	13.23	S44°55'17"E
L8	13.20	N45°04'43"E
L9	17.46	N45°12'34"E
L10	17.46	S45°12'34"W
L11	17.48	N44°54'44"W
L12	17.44	N45°05'16"E
L13	17.46	S44°47'26"E
L14	17.45	N44°47'26"W
L15	16.52	N45°12'34"E
L16	17.46	N44°47'26"W
L17	17.46	S45°12'34"W
L18	21.21	S71°28'34"E
L19	16.53	S45°04'17"W
L20	17.48	N44°55'43"E
L21	16.53	S44°55'43"E
L22	17.46	S44°47'26"E
L23	17.46	N44°46'48"W
L24	17.43	S45°04'17"W
L25	17.42	S56°52'02"E
L26	17.45	N45°13'12"E

CURVE TABLE

CURVE	RADIUS	LENGTH	CHORD	DELTA
C1	774.00	435.48	429.76	32°14'13"
C2	830.00	430.51	425.70	29°43'07"
C3	804.00	421.19	416.39	30°00'57"
C4	800.00	414.93	410.30	29°43'03"
C5	50.00	111.34	89.72	127°35'12"
C6	50.00	6.63	6.63	7°35'52"
C7	50.00	45.17	43.65	51°45'41"
C8	50.00	41.15	40.00	47°09'23"
C9	50.00	18.39	18.28	21°04'16"
C10	45.00	14.66	14.60	18°40'18"
C11	45.00	14.66	14.60	18°40'18"
C12	45.00	14.66	14.60	18°40'18"
C13	50.00	110.92	89.53	127°06'01"
C14	50.00	29.93	29.48	34°17'44"
C15	50.00	41.15	40.00	47°09'23"
C16	50.00	39.84	38.79	45°38'54"
C17	45.00	14.66	14.60	18°40'18"
C18	45.00	9.65	9.64	121°7'34"
C19	45.00	5.01	5.01	6°22'44"
C20	45.00	14.66	14.60	18°40'18"
C21	50.00	111.13	89.63	127°20'36"
C22	50.00	2.61	2.61	2°59'10"
C23	50.00	54.25	51.63	62°09'49"
C24	50.00	54.27	51.65	62°11'37"
C25	45.00	14.66	14.60	18°40'18"
C26	45.00	9.23	9.22	11°45'26"
C27	45.00	5.43	5.43	6°54'52"

CURVE TABLE

CURVE	RADIUS	LENGTH	CHORD	DELTA
C28	45.00	14.66	14.60	18°40'18"
C29	50.00	111.11	89.62	127°19'20"
C30	50.00	41.72	40.52	47°48'38"
C31	50.00	43.89	42.49	50°17'39"
C32	50.00	25.50	25.22	29°13'03"
C33	45.00	14.66	14.60	18°40'18"
C34	45.00	14.66	14.60	18°40'18"
C35	50.00	111.13	89.63	127°20'36"
C36	50.00	30.28	29.82	34°41'46"
C37	50.00	41.15	40.00	47°09'23"
C38	50.00	39.70	38.66	45°29'28"
C39	45.00	14.66	14.60	18°40'18"
C40	45.00	1.36	1.36	1°44'16"
C41	45.00	13.30	13.25	16°56'03"
C42	45.00	14.66	14.60	18°40'18"
C43	50.00	111.15	89.63	127°21'53"
C44	50.00	38.19	37.27	43°45'49"
C45	50.00	41.15	40.00	47°09'15"
C46	50.00	31.81	31.27	36°26'49"
C47	45.00	14.66	14.60	18°40'18"
C48	859.00	256.46	255.51	17°06'23"
C49	859.00	11.25	11.25	0°45'02"
C50	859.00	60.23	60.22	4°01'03"
C51	859.00	60.67	60.66	4°02'49"
C52	859.00	124.31	124.20	8°17'29"
C53	599.00	110.84	110.68	10°36'06"
C54	599.00	66.12	66.09	6°19'28"

CURVE TABLE

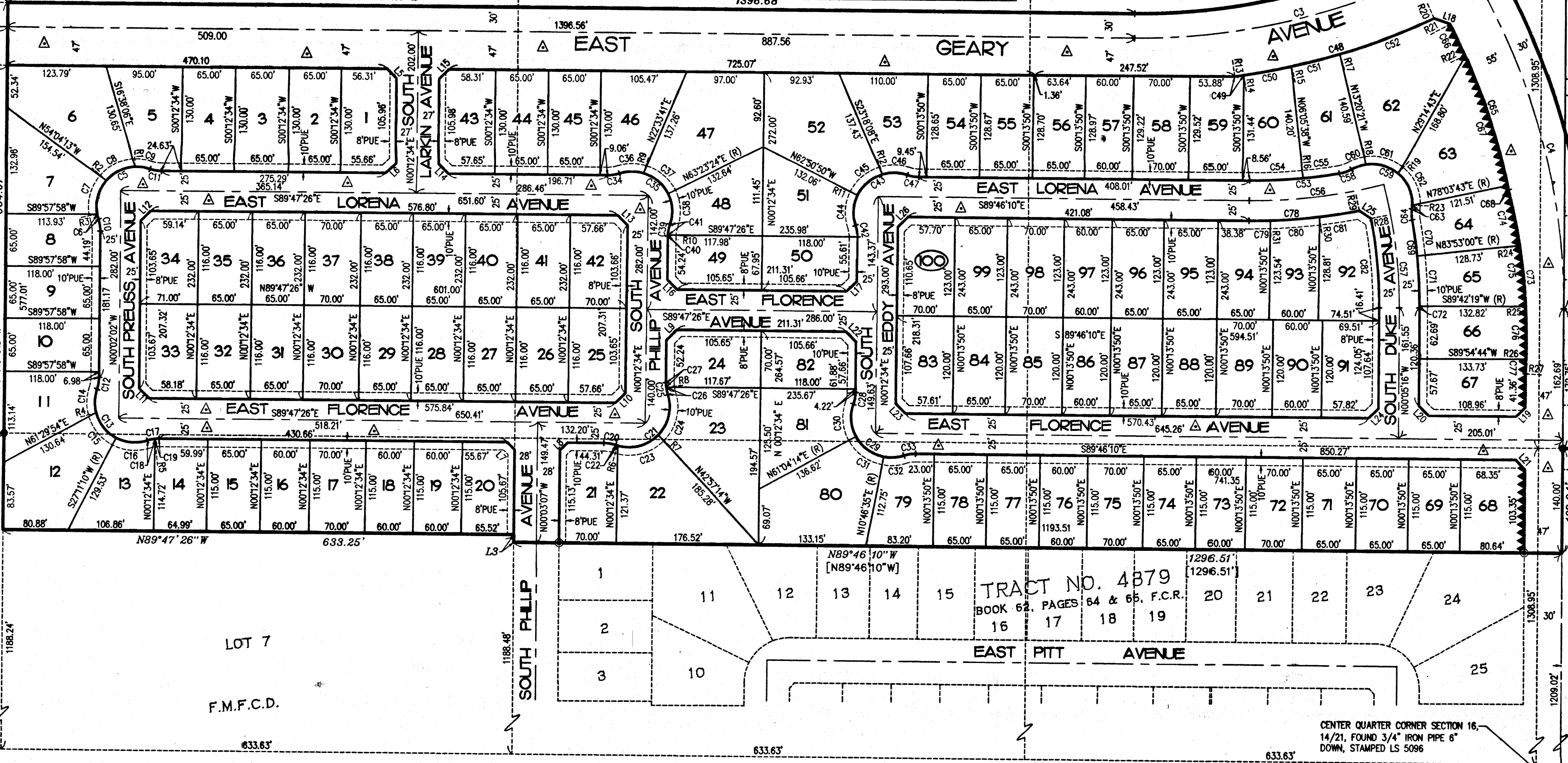
CURVE	RADIUS	LENGTH	CHORD	DELTA
C55	599.00	44.72	44.71	4°16'38"
C56	624.00	166.96	166.46	15°19'49"
C57	595.00	155.54	155.09	14°58'38"
C58	45.00	15.85	15.77	20°11'08"
C59	50.00	111.34	89.72	127°35'10"
C60	50.00	18.37	18.27	21°02'58"
C61	50.00	43.34	42.00	49°40'09"
C62	50.00	44.87	43.38	51°25'04"
C63	50.00	4.76	4.75	5°26'59"
C64	45.00	13.60	13.55	17°18'50"
C65	745.00	219.41	218.62	16°52'27"
C66	745.00	43.07	43.06	3°18'44"
C67	745.00	170.93	170.56	13°08'46"
C68	745.00	5.41	5.41	0°24'57"
C69	620.00	110.34	110.19	10°11'48"
C70	620.00	45.10	45.09	4°10'04"
C71	620.00	63.00	62.97	5°49'18"
C72	620.00	2.24	2.24	0°12'26"
C73	755.00	230.06	229.17	17°27'33"
C74	755.00	70.56	70.54	5°21'17"
C75	755.00	76.39	76.36	5°47'51"
C76	755.00	65.44	65.42	4°57'57"
C77	755.00	17.67	17.67	1°20'28"
C78	649.00	135.80	135.55	11°59'20"
C79	649.00	26.63	26.63	2°21'04"
C80	649.00	60.25	60.23	5°19'09"
C81	649.00	48.92	48.91	4°19'07"
C82	570.00	112.07	111.89	11°15'53"



PREVIOUSLY DEEDED TO THE CITY OF FRESNO
FOR PUBLIC STREET PURPOSES PER DEED
RECORDED JUNE 29, 1999, AS DOCUMENT
NO. 1999-0097136, O.R.F.C.

RADIAL TABLE

RADIAL	DIRECTION
R1	S02°11'24"E
R2	N49°20'47"W
R3	S78°53'32"W
R4	N74°20'32"E
R5	S06°10'10"E
R6	N15°53'42"E
R7	S46°16'07"E
R8	N83°17'41"E
R9	S16°14'02"W
R10	S88°03'10"E
R11	S64°41'56"E
R12	N17°32'41"W
R13	N08°04'16"W
R14	N08°49'18"W
R15	N12°50'20"W
R16	N06°05'38"W
R17	N16°53'09"W
R18	S09°30'26"E
R19	S40°09'43"W
R20	N25°10'38"W
R21	S61°36'14"W



TRACT NO. 4879
BOOK 62, PAGES 16 & 19, F.C.R.

PREVIOUSLY DEEDED TO THE CITY OF FRESNO
FOR PUBLIC STREET PURPOSES PER DEED
RECORDED JANUARY 26, 1998, AS DOCUMENT
NO. 98009906, O.R.F.C.

REVISIONS