

TRACT NO. 4897

SHEET THREE OF THREE

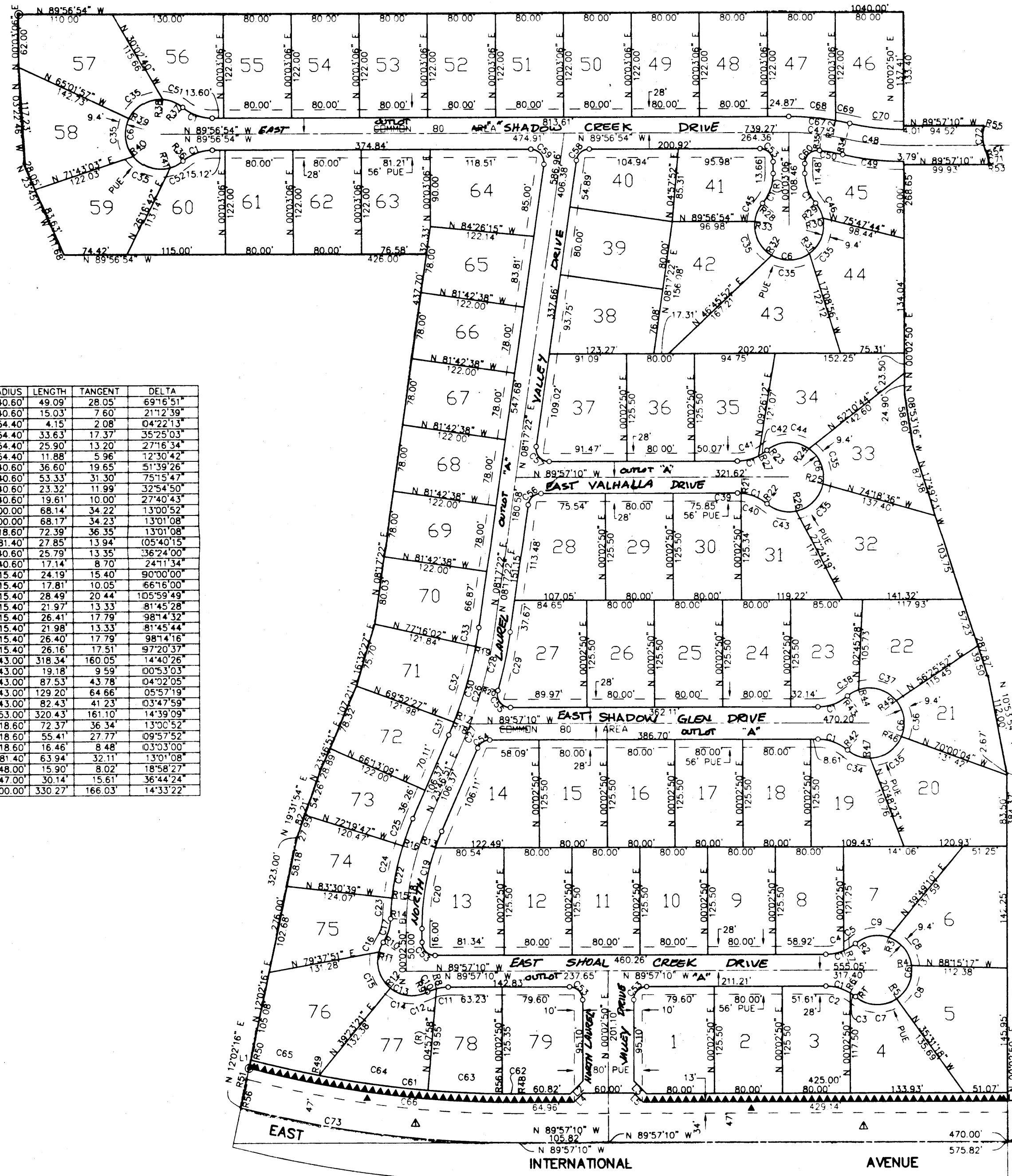
IN THE CITY OF FRESNO, COUNTY OF FRESNO, STATE OF CALIFORNIA
SURVEYED AND PLATTED IN DECEMBER 1998, BY GARY G. GIANNETTA

| RADIAL | DIRECTION | RADIAL | DIRECTION |
|--------|---------------|--------|---------------|
| R1 | N 39°50'06" E | R29 | N 50°15'50" E |
| R2 | N 39°44'25" W | R30 | N 77°56'33" E |
| R3 | N 19°12'45" E | R31 | S 35°43'47" E |
| R4 | N 82°43'03" E | R32 | S 30°35'52" W |
| R5 | S 33°46'38" E | R33 | N 83°04'29" W |
| R6 | N 31°30'41" E | R34 | S 13°03'58" W |
| R7 | S 22°45'02" E | R35 | S 07°23'43" W |
| R8 | N 14°46'52" W | R36 | S 39°44'10" E |
| R9 | S 26°28'41" E | R37 | N 39°50'22" E |
| R10 | S 57°02'19" E | R38 | N 03°26'22" E |
| R11 | S 74°16'59" E | R39 | N 62°53'17" W |
| R12 | N 39°23'21" E | R40 | S 50°47'03" W |
| R13 | N 70°25'00" W | R41 | S 15°32'36" E |
| R14 | S 87°51'36" E | R42 | S 39°50'06" W |
| R15 | N 83°30'39" W | R43 | N 39°44'25" W |
| R16 | S 72°19'47" E | R44 | N 18°31'46" W |
| R17 | S 68°42'34" E | R45 | N 50°45'06" E |
| R18 | S 68°07'19" E | R46 | S 67°07'03" E |
| R19 | N 79°01'10" W | R47 | S 00°47'24" E |
| R20 | S 73°57'20" E | R48 | N 00°02'50" E |
| R21 | N 04°25'04" E | R49 | N 10°55'17" E |
| R22 | S 39°50'06" W | R50 | N 14°43'16" E |
| R23 | N 39°44'25" W | R51 | N 14°41'59" E |
| R24 | N 35°31'22" E | R52 | N 10°00'58" E |
| R25 | S 78°08'59" E | R53 | S 86°25'43" W |
| R26 | S 11°49'19" E | R54 | N 67°54'53" E |
| R27 | S 27°33'44" E | R55 | N 78°37'00" W |
| R28 | N 50°09'38" W | R56 | N 14°36'12" E |

| CURVE | RADIUS | LENGTH | TANGENT | DELTA |
|-------|--------|--------|---------|------------|
| C1 | 54.40 | 37.78 | 19.69 | 39°47'16" |
| C2 | 54.40 | 29.87 | 15.32 | 31°27'51" |
| C3 | 54.40 | 7.90 | 3.96 | 08°19'25" |
| C4 | 54.40 | 21.65 | 10.97 | 22°47'52" |
| C5 | 54.40 | 16.13 | 8.13 | 16°59'24" |
| C6 | 40.60 | 183.94 | 48.75 | 259°34'31" |
| C7 | 40.60 | 52.18 | 30.38 | 73°38'44" |
| C8 | 40.60 | 45.00 | 25.13 | 63°30'19" |
| C9 | 40.60 | 41.77 | 22.95 | 58°57'10" |
| C10 | 54.40 | 25.18 | 12.82 | 26°31'31" |
| C11 | 54.40 | 14.08 | 7.08 | 14°49'43" |
| C12 | 54.40 | 11.11 | 5.57 | 11°41'48" |
| C13 | 40.60 | 105.89 | 148.81 | 148°26'22" |
| C14 | 40.60 | 46.67 | 26.30 | 65°52'01" |
| C15 | 40.60 | 47.00 | 26.53 | 66°19'41" |
| C16 | 40.60 | 12.22 | 6.16 | 17°14'40" |
| C17 | 54.40 | 28.26 | 15.00 | 30°49'17" |
| C18 | 300.00 | 124.27 | 63.04 | 23°44'00" |
| C19 | 281.40 | 116.56 | 59.13 | 23°44'00" |
| C20 | 281.85 | 112.02 | 56.76 | 22°46'19" |
| C21 | 281.40 | 20.62 | 10.31 | 04°11'51" |
| C22 | 318.60 | 120.34 | 60.89 | 21°38'26" |
| C23 | 318.60 | 24.18 | 12.10 | 04°20'57" |
| C24 | 318.60 | 62.17 | 31.19 | 11°10'52" |
| C25 | 318.60 | 33.98 | 17.01 | 06°06'38" |
| C26 | 500.00 | 135.19 | 68.01 | 15°29'29" |
| C27 | 500.00 | 21.73 | 10.87 | 02°29'25" |
| C28 | 500.00 | 113.45 | 56.97 | 13°00'03" |
| C29 | 518.60 | 70.19 | 35.15 | 07°45'17" |
| C30 | 481.40 | 130.16 | 65.48 | 15°29'29" |
| C31 | 481.40 | 15.99 | 7.99 | 01°54'09" |
| C32 | 481.40 | 91.56 | 45.92 | 10°53'51" |
| C33 | 481.40 | 22.61 | 11.31 | 02°41'28" |
| C34 | 40.60 | 26.79 | 15.03 | 40°37'30" |
| C35 | 40.60 | 47.00 | 26.53 | 66°19'39" |
| C36 | 40.60 | 44.03 | 24.46 | 62°07'51" |

| LINE | DIRECTION | DISTANCE |
|------|---------------|----------|
| L1 | N 12°02'16" E | 10.06 |
| L2 | N 45°02'50" E | 21.21 |
| L3 | N 44°57'10" W | 21.21 |
| L4 | N 45°02'50" E | 15.36 |
| L5 | S 44°57'10" E | 15.36 |
| L6 | N 00°02'50" E | 10.00 |

| CURVE | RADIUS | LENGTH | TANGENT | DELTA |
|-------|---------|--------|---------|------------|
| C37 | 40.60 | 49.09 | 28.05 | 69°16'51" |
| C38 | 40.60 | 15.03 | 7.60 | 21°12'39" |
| C39 | 54.40 | 4.15 | 2.08 | 04°22'13" |
| C40 | 54.40 | 33.63 | 17.37 | 35°25'03" |
| C41 | 54.40 | 25.90 | 13.20 | 27°18'34" |
| C42 | 54.40 | 11.88 | 5.96 | 12°39'42" |
| C43 | 40.60 | 36.60 | 19.65 | 51°39'26" |
| C44 | 40.60 | 53.33 | 31.30 | 75°15'47" |
| C45 | 40.60 | 23.32 | 11.99 | 32°54'50" |
| C46 | 40.60 | 19.61 | 10.00 | 27°40'43" |
| C47 | 300.00 | 68.14 | 34.22 | 13°00'52" |
| C48 | 300.00 | 68.17 | 34.23 | 13°01'08" |
| C49 | 318.60 | 72.39 | 36.35 | 13°01'08" |
| C50 | 281.40 | 27.85 | 13.94 | 05°40'15" |
| C51 | 40.60 | 25.79 | 13.35 | 36°24'00" |
| C52 | 40.60 | 17.14 | 8.70 | 24°11'34" |
| C53 | 15.40 | 24.19 | 15.40 | 90°00'00" |
| C54 | 15.40 | 17.81 | 10.05 | 66°16'00" |
| C55 | 15.40 | 28.49 | 20.44 | 105°59'49" |
| C56 | 15.40 | 21.97 | 13.33 | 81°45'28" |
| C57 | 15.40 | 26.41 | 17.79 | 98°14'32" |
| C58 | 15.40 | 21.98 | 13.33 | 81°45'44" |
| C59 | 15.40 | 26.40 | 17.79 | 98°14'16" |
| C60 | 15.40 | 26.16 | 17.51 | 97°20'37" |
| C61 | 1243.00 | 318.34 | 160.05 | 14°40'26" |
| C62 | 1243.00 | 19.18 | 9.59 | 00°53'03" |
| C63 | 1243.00 | 87.53 | 43.78 | 04°02'05" |
| C64 | 1243.00 | 129.20 | 64.66 | 05°57'19" |
| C65 | 1243.00 | 82.43 | 41.23 | 03°47'59" |
| C66 | 1253.00 | 320.43 | 161.10 | 14°39'09" |
| C67 | 318.60 | 72.37 | 36.34 | 13°00'52" |
| C68 | 318.60 | 55.41 | 27.77 | 09°57'52" |
| C69 | 318.60 | 16.46 | 8.48 | 03°03'00" |
| C70 | 281.40 | 63.94 | 32.11 | 13°01'08" |
| C71 | 48.00 | 15.90 | 8.02 | 18°58'27" |
| C72 | 47.00 | 30.14 | 15.61 | 36°44'24" |
| C73 | 1300.00 | 330.27 | 166.03 | 14°33'22" |



NOTE:

- SET 3/4" IRON PIPE, 6" DOWN, TAGGED RCE 26996 AT ALL LOT CORNERS

BASIS OF BEARINGS :

THE NORTH LINE OF THE SOUTHEAST QUARTER OF SECTION 14, TOWNSHIP 12 SOUTH, RANGE 20 EAST, M.D.B.&M., TAKEN AS BEING S 89°57'10" E AS SHOWN ON THE MAP OF THE RECORD OF SURVEY RECORDED IN BOOK 21 OF RECORDS OF SURVEYS, PAGE 27, F.C.R.

LEGEND

- MONUMENT FOUND AND ACCEPTED AS NOTED
- SET 3/4" IRON PIPE, 30" LONG, 6" DOWN BELOW GROUND, TAGGED RCE 26996
- ⊙ SET 3/4" IRON PIPE, 30" LONG, 4" UP IN 6" DIAMETER, 3/4" PUE MONUMENT, DOWN 6" BELOW GROUND, TAGGED RCE 26996
- PUE PUBLIC UTILITY EASEMENT NOW OFFERED FOR DEDICATION FOR PUBLIC USE
- ▲ PREVIOUSLY DEDICATED FOR PUBLIC STREET PURPOSES PER FIELD REPORT OF JULY 27, 1993 AS DOCUMENT N 44118713 PER P
- ▲ NOW OFFERED FOR DEDICATION FOR PUBLIC STREET PURPOSES
- ▲▲▲ INDICATES RELINQUISHMENT OF DIRECT ACCESS RIGHTS
- () RECORD DATA AS PER TRACT 4788 RECORDED IN VOLUME 60 PAGES 52, 53, 54, 55, AND 56 OF PLATS, FRESNO COUNTY RECORDS
- BLUE BORDER INDICATES THE LIMITS OF THIS SUBDIVISION