



Prepared on Tue Jun 06 23:47:08 2017

# Street Names, Addresses and (Lot Numbers) for T4879



# MAP OF TRACT NO. 4879

**PHASE II OF TENTATIVE TRACT NO. 4570  
IN THE CITY OF FRESNO  
FRESNO COUNTY, CALIFORNIA  
SURVEYED AND PLATTED IN AUGUST, 1997  
BY EDWARD D. DUNKEL AND ASSOCIATES  
CONSISTING OF TWO SHEETS  
SHEET 2 OF 2 SHEETS**

## BASIS OF BEARINGS

THE NORTH LINE OF THE SOUTH WEST QUARTER OF SECTION 16, T. 14 S., R. 21 E., M.D.B. & M., TAKEN TO BE S 89°46'10" E AS SHOWN ON TRACT NO. 4570, RECORDED IN VOLUME 61 OF PLATS, AT PAGES 80 & 81, FRESNO COUNTY RECORDS.

**\* NOTE \***  
1" O.D. x 30" LONG IRON PIPE TO BE SET 6" DOWN AND TAGGED RCE-19789, AT ALL LOT CORNERS, ANGLE POINTS, BEGINNING OF CURVES AND END OF CURVES, OR AS NOTED WITHIN THE TIME SPECIFIED IN THE SUBDIVISION AGREEMENT FOR THIS TRACT.

- LEGEND**
- EXISTING MONUMENT FOUND AND ACCEPTED OR AS NOTED.
  - ⊙ SET 1" O.D. IRON PIPE, 30" LONG, UP 4", IN 6" DIA. x 30" CONCRETE MONUMENT DOWN 6" AND TAGGED RCE-19789, EXCEPT AS NOTED.
  - ⊙ FOUND 1" O.D. IRON PIPE, UP 4", IN 6" DIA. CONCRETE MONUMENT DOWN 6" AND TAGGED RCE-19789, PER TRACT NO. 4570, RECORDED IN VOLUME 61 OF PLATS AT PAGES 80 & 81, FRESNO COUNTY RECORDS.
  - ( ) PER RECORDED DATA FROM TRACT NO. 4570, RECORDED IN VOLUME 61 OF PLATS AT PAGES 80 & 81, FRESNO COUNTY RECORDS.
  - (( )) CALCULATED DATA PER RECORDED DATA FROM TRACT NO. 4570, RECORDED IN VOLUME 61 OF PLATS AT PAGES 80 & 81, FRESNO COUNTY RECORDS.
  - PUE. PUBLIC UTILITY EASEMENT NOW OFFERED FOR DEDICATION FOR PUBLIC USE.
  - LE. LANDSCAPE EASEMENT NOW OFFERED FOR DEDICATION FOR PUBLIC USE.
  - ▲▲▲ INDICATES RELINQUISHMENT OF DIRECT VEHICULAR ACCESS RIGHTS.
  - BLUE BORDER INDICATES THE LIMITS OF THIS SUBDIVISION.
  - △ INDICATES PORTIONS NOW OFFERED FOR DEDICATION FOR PUBLIC STREET PURPOSES.

**CURVE TABLE**

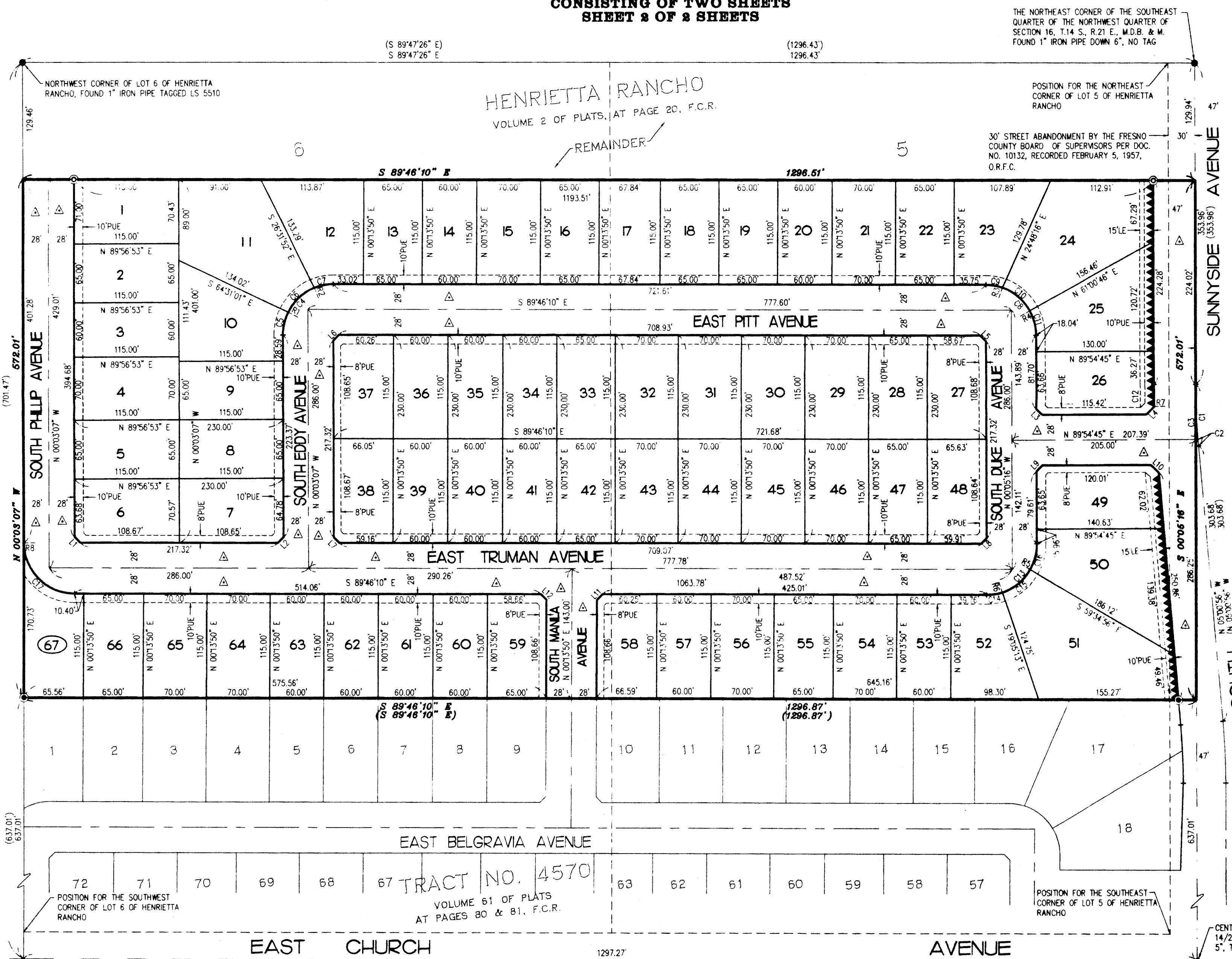
CURVE	RADIUS	LENGTH	CHORD	DELTA
C1	800.00'	68.80'	68.78'	04°55'40"
(C1)	800.00'	68.80'	68.78'	04°55'40"
C2	800.00'	7.00'	7.00'	00°30'06"
C3	800.00'	61.80'	61.78'	04°25'34"
C4	56.00'	88.24'	79.39'	90°16'57"
C5	56.00'	26.00'	25.77'	26°36'02"
C6	56.00'	40.90'	40.00'	41°50'57"
C7	56.00'	21.34'	21.21'	21°49'58"
C8	56.00'	87.65'	78.98'	89°40'54"
C9	56.00'	18.50'	18.42'	18°55'57"
C10	56.00'	40.90'	40.00'	41°50'59"
C11	56.00'	28.25'	27.95'	28°53'58"
C12	84.70'	24.89'	24.89'	01°41'03"
C13	56.00'	88.28'	79.42'	90°19'06"
C14	56.00'	17.56'	17.49'	17°57'47"
C15	56.00'	40.90'	40.00'	41°50'59"
C16	56.00'	29.82'	29.46'	30°30'20"
C17	56.00'	87.69'	79.00'	89°43'03"

**LINE TABLE**

LINE	DIRECTION	DISTANCE
L1	S 44°54'39" E	8.97'
L2	N 45°05'21" E	8.97'
L3	S 45°05'16" E	8.97'
L4	N 44°07'07" E	12.34'
L5	S 44°55'43" E	8.97'
L6	N 45°05'21" E	8.97'
L7	S 44°54'39" E	8.97'
L8	N 45°04'17" E	8.97'
L9	N 44°54'44" E	8.97'
L10	S 47°33'06" E	12.14'
L11	N 45°13'50" E	8.97'
L12	S 44°46'10" E	8.97'

**RADIAL TABLE**

RADIAL	DIRECTION
R1	N 63°27'05" W
R2	N 21°36'08" W
R3	N 19°09'47" E
R4	N 61°00'46" E
R5	S 59°34'56" E
R6	S 17°43'57" E
R7	S 88°13'41" W
R8	S 89°56'53" W



THE NORTHEAST CORNER OF THE SOUTHWEST QUARTER OF SECTION 16, T. 14 S., R. 21 E., M.D.B. & M. FOUND 1" IRON PIPE DOWN 6", NO TAG

POSITION FOR THE NORTHEAST CORNER OF LOT 5 OF HENRIETTA RANCHO

30' STREET ABANDONMENT BY THE FRESNO COUNTY BOARD OF SUPERVISORS PER DOC. NO. 10132, RECORDED FEBRUARY 5, 1957, O.R.F.C.

SCALE 1" = 80'

PREVIOUSLY DEEDED TO THE CITY OF FRESNO FOR PUBLIC STREET PURPOSES PER DEED RECORDED JANUARY 26, 1998, AS DOCUMENT NO. 98009905, O.R.F.C.

EAST TRUMAN AVENUE

**REVISIONS**

1/30/98	BJM # 7

CENTER QUARTER CORNER SECTION 16, 14/21, FOUND 3/4" IRON PIPE DOWN 5", TAGGED LS 5096.

WEST QUARTER CORNER SECTION 16, 14/21, FOUND 3/4" IRON PIPE FLUSH IN PAVEMENT, TAG ILLEGIBLE, T.O.F.

POSITION FOR THE SOUTHWEST CORNER OF LOT 6 OF HENRIETTA RANCHO

POSITION FOR THE SOUTHWEST CORNER OF LOT 5 OF HENRIETTA RANCHO

TRACT NO. 4570  
VOLUME 61 OF PLATS  
AT PAGES 80 & 81, F.C.R.

SOUTH CLOVIS AVENUE

SUNNYSIDE AVENUE

SOUTH AVENUE

SOUTH PHILP AVENUE

SOUTH EDDY AVENUE

SOUTH DUKA AVENUE

EAST BELGRAVIA AVENUE

EAST CHURCH AVENUE

EAST PITT AVENUE

TRACT NO. 4570

VOLUME 61 OF PLATS

AT PAGES 80 & 81, F.C.R.

S 89°46'10" E

BASIS OF BEARINGS

2624.54'

AVENUE

PC 1 - MERRY - 8/20/98