



Prepared on Thu Oct 18 01:01:46 2018

Street Names, Addresses and (Lot Numbers) for T4858



MAP OF TRACT NO. 4858

**PHASE THREE OF TRACT NO. 4741
IN THE CITY OF FRESNO
FRESNO COUNTY, CALIFORNIA
SURVEYED AND PLATTED IN MAY, 1996
BY EDWARD D. DUNKEL AND ASSOCIATES**

**CONSISTING OF TWO SHEETS
SHEET 2 OF 2 SHEETS**

BASIS OF BEARINGS

THE EAST LINE OF THE SOUTHWEST QUARTER OF SECTION 24, T.12 S., R.20 E., M.D.B. & M. WAS TAKEN TO BE N 00°16'30" E, ALSO BEING THE CENTERLINE OF NORTH CHESTNUT AVENUE, PER THE MAP OF TRACT NO. 4362, RECORDED IN VOLUME 54 OF PLATS AT PAGES 23-25, FRESNO COUNTY RECORDS.

LEGEND

- EXISTING MONUMENT FOUND AND ACCEPTED OR AS NOTED.
- ⊙ SET 1" O.D. IRON PIPE, 30" LONG, UP 4", IN 6" DIA. x 30" CONCRETE MONUMENT DOWN 6" AND TAGGED RCE-19789, EXCEPT AS NOTED.
- ⊙ FOUND AND ACCEPTED 1" O.D. IRON PIPE UP 4" IN 6" CONCRETE MONUMENT TAGGED RCE 19789.
- (...) PER RECORDED DATA FROM TRACT NO. 4362, RECORDED IN VOLUME 54 OF PLATS AT PAGES 23-25, FRESNO COUNTY RECORDS.
- ((...)) PER RECORDED DATA FROM TRACT NO. 4741, RECORDED IN VOLUME 61 OF PLATS AT PAGES 5-8, FRESNO COUNTY RECORDS.
- < ... > PER RECORDED DATA PER DOCUMENT NO. 96140916, RECORDED IN OCTOBER 18, 1996, FRESNO COUNTY RECORDS.
- P.U.E. PUBLIC UTILITY EASEMENT NOW OFFERED FOR DEDICATION FOR PUBLIC USE.
- L.E. LANDSCAPE EASEMENT NOW OFFERED FOR DEDICATION FOR PUBLIC USE.
- ▲▲▲ INDICATES RELINQUISHMENT OF DIRECT ACCESS RIGHTS.
- BLUE BORDER INDICATES THE LIMITS OF THIS SUBDIVISION.
- △ INDICATES PORTIONS NOW OFFERED FOR DEDICATION FOR PUBLIC STREET PURPOSES.
- INDICATES PORTIONS PREVIOUSLY DEDICATED TO THE CITY OF FRESNO FOR PUBLIC STREET PURPOSES PER DOCUMENT RECORDED JULY 15, 1997 AS DOCUMENT NO. 97089283, O.R.F.C.
- C.R. # INDICATES CORNER RECORD ON FILE WITH FRESNO COUNTY SURVEYOR.

*** NOTE ***
1" O.D. x 30" LONG IRON PIPE TO BE SET 6" DOWN AND TAGGED RCE-19789, AT ALL LOT CORNERS, ANGLE POINTS, BEGINNING OF CURVES AND END OF CURVES, OR AS NOTED WITHIN THE TIME SPECIFIED IN THE SUBDIVISION AGREEMENT FOR THIS TRACT.

LINE TABLE

LINE	DIRECTION	DISTANCE
L1	S89°43'22"W	158.00'
((L1))	S89°43'22"W	158.00'
L2	N00°16'38"W	234.27'
((L2))	N00°16'38"W	234.27'
L3	N86°16'33"E	87.02'
((L3))	N86°16'33"E	87.02'
L4	N79°40'49"E	80.92'
((L4))	N79°40'49"E	80.92'
L5	N73°26'03"E	80.92'
((L5))	N73°26'03"E	80.92'
L6	N67°34'31"E	71.89'
((L6))	N67°34'31"E	71.89'
L7	N70°58'28"E	69.00'
((L7))	N70°58'28"E	69.00'
L8	N79°23'10"E	68.00'
((L8))	N79°23'10"E	68.00'
L9	(N84°12'56"E)	26.28'
L10	N89°17'53"E	75.06'
L11	N44°29'47"E	16.53'
L12	S45°16'38"E	17.46'
L13	S45°30'13"E	17.42'
L14	S61°14'13"E	16.15'
L15	N49°30'00"E	41.41'
L16	S45°43'48"E	16.53'
L17	N44°16'46"E	17.46'
L18	S45°43'48"E	17.46'
L19	N44°16'59"E	16.53'
L20	S45°31'14"E	16.53'
L21	N44°29'47"E	17.49'
L22	S45°30'13"E	17.42'
L23	N44°29'47"E	17.49'
L24	S54°19'54"E	16.44'
L25	N44°07'52"E	17.57'
L26	S45°30'13"E	17.42'
L27	N44°29'47"E	17.49'

CURVE TABLE

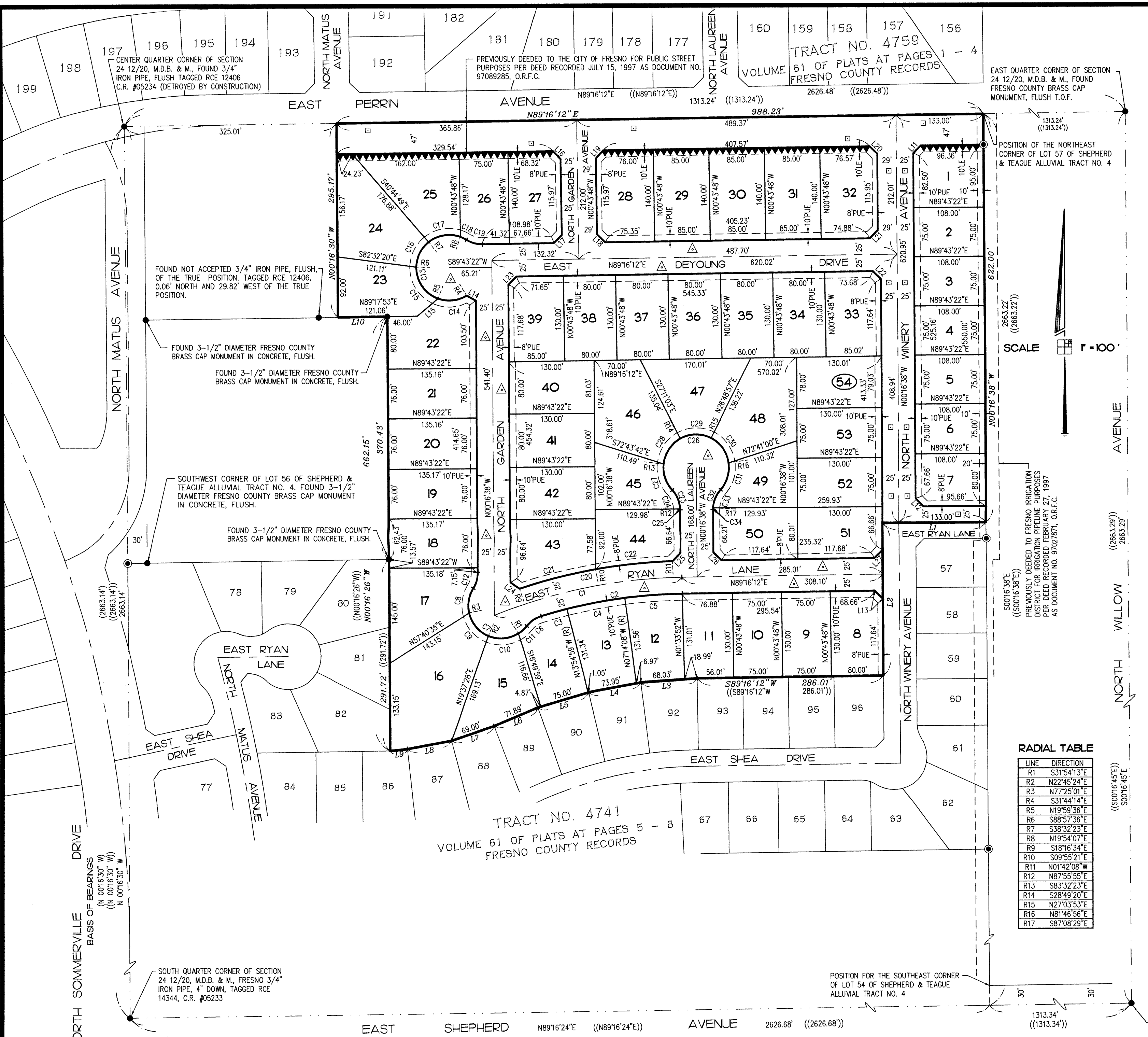
CURVE	RADIUS	LENGTH	CHORD	DELTA
C1	800.00'	293.90'	292.25'	21°02'58"
C2	775.00'	219.07'	218.34'	16°11'45"
C3	775.00'	40.71'	40.70'	03°00'34"
C4	775.00'	90.36'	90.31'	06°40'50"
C5	775.00'	88.00'	87.95'	06°30'21"
C6	45.00'	27.17'	26.76'	34°35'44"
C7	50.00'	151.74'	99.86'	173°52'52"
C8	50.00'	39.22'	38.22'	44°56'34"
C9	50.00'	47.70'	45.91'	54°39'37"
C10	50.00'	47.70'	45.91'	54°39'37"
C11	50.00'	17.12'	17.04'	19°37'04"
C12	45.00'	25.63'	25.29'	32°38'13"
C13	50.00'	212.65'	84.95'	243°41'04"
C14	50.00'	45.14'	43.63'	51°43'50"
C15	50.00'	62.00'	58.10'	71°02'48"
C16	50.00'	44.00'	42.59'	50°25'13"
C17	50.00'	51.00'	48.82'	58°26'30"
C18	50.00'	10.51'	10.49'	12°02'43"
C19	45.00'	25.66'	25.32'	32°40'38"
C20	825.00'	238.64'	237.81'	16°34'25"
C21	825.00'	120.28'	120.17'	08°21'13"
C22	825.00'	118.36'	118.26'	08°13'12"
C23	45.00'	33.41'	32.65'	42°32'13"
C24	45.00'	32.00'	31.33'	40°44'45"
C25	45.00'	1.41'	1.41'	01°47'28"
C26	50.00'	231.32'	73.68'	265°04'26"
C27	50.00'	43.00'	41.69'	49°16'28"
C28	50.00'	47.75'	45.96'	54°43'03"
C29	50.00'	48.77'	46.86'	55°53'13"
C30	50.00'	47.75'	45.96'	54°43'03"
C31	50.00'	44.05'	42.64'	50°28'39"
C32	45.00'	33.41'	32.65'	42°32'13"
C33	45.00'	30.95'	30.34'	39°24'05"
C34	45.00'	2.46'	2.46'	03°08'08"

RADIAL TABLE

LINE	DIRECTION
R1	S31°54'13"E
R2	N22°45'24"E
R3	N77°25'01"E
R4	S31°44'14"E
R5	N19°59'36"E
R6	S88°57'36"E
R7	S38°32'23"E
R8	N19°54'07"E
R9	S18°16'34"E
R10	S09°55'21"E
R11	N01°42'08"W
R12	N87°55'55"E
R13	S83°32'23"E
R14	S28°49'20"E
R15	N27°03'53"E
R16	N81°46'56"E
R17	S87°08'29"E

REVISIONS

NO.	DESCRIPTION



TRACT NO. 4741
VOLUME 61 OF PLATS AT PAGES 5 - 8
FRESNO COUNTY RECORDS

TRACT NO. 4759
VOLUME 61 OF PLATS AT PAGES 1 - 4
FRESNO COUNTY RECORDS

POSITION OF THE NORTHEAST CORNER OF LOT 57 OF SHEPHERD & TEAGUE ALLUVIAL TRACT NO. 4

PREVIOUSLY DEEDED TO FRESNO IRRIGATION DISTRICT FOR IRRIGATION PIPELINE PURPOSES PER DEED RECORDED FEBRUARY 27, 1997 AS DOCUMENT NO. 97027871, O.R.F.C.

POSITION OF THE SOUTHEAST CORNER OF LOT 54 OF SHEPHERD & TEAGUE ALLUVIAL TRACT NO. 4

1313.34
(1313.34')

SOUTHEAST CORNER OF SECTION 24 12/20, M.D.B. & M., FOUND FRESNO COUNTY BRASS CAP MONUMENT, FLUSH

CENTER QUARTER CORNER OF SECTION 24 12/20, M.D.B. & M., FOUND 3/4" IRON PIPE, FLUSH TAGGED RCE 12406 C.R. #05234 (DESTROYED BY CONSTRUCTION)

PREVIOUSLY DEEDED TO THE CITY OF FRESNO FOR PUBLIC STREET PURPOSES PER DEED RECORDED JULY 15, 1997 AS DOCUMENT NO. 97089285, O.R.F.C.

FOUND NOT ACCEPTED 3/4" IRON PIPE, FLUSH, OF THE TRUE POSITION, TAGGED RCE 12406, 0.06' NORTH AND 29.82' WEST OF THE TRUE POSITION.

FOUND 3-1/2" DIAMETER FRESNO COUNTY BRASS CAP MONUMENT IN CONCRETE, FLUSH.

FOUND 3-1/2" DIAMETER FRESNO COUNTY BRASS CAP MONUMENT IN CONCRETE, FLUSH.

SOUTHWEST CORNER OF LOT 56 OF SHEPHERD & TEAGUE ALLUVIAL TRACT NO. 4. FOUND 3-1/2" DIAMETER FRESNO COUNTY BRASS CAP MONUMENT IN CONCRETE, FLUSH.

FOUND 3-1/2" DIAMETER FRESNO COUNTY BRASS CAP MONUMENT IN CONCRETE, FLUSH.

SOUTH QUARTER CORNER OF SECTION 24 12/20, M.D.B. & M., FRESNO 3/4" IRON PIPE, 4" DOWN, TAGGED RCE 14344, C.R. #05233