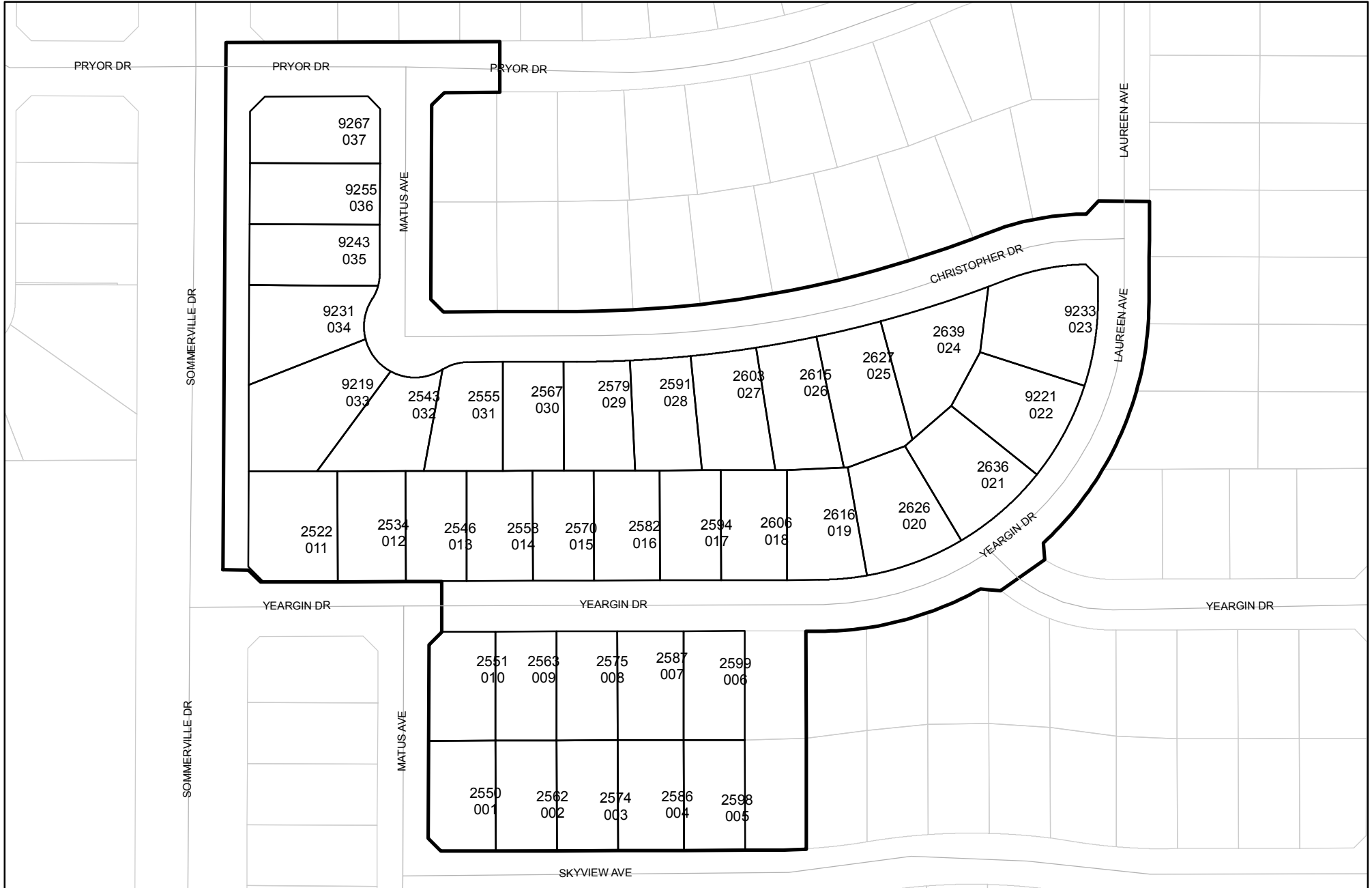




Prepared on Sun Jun 10 22:27:45 2018

# Street Names, Addresses and (Lot Numbers) for T4857



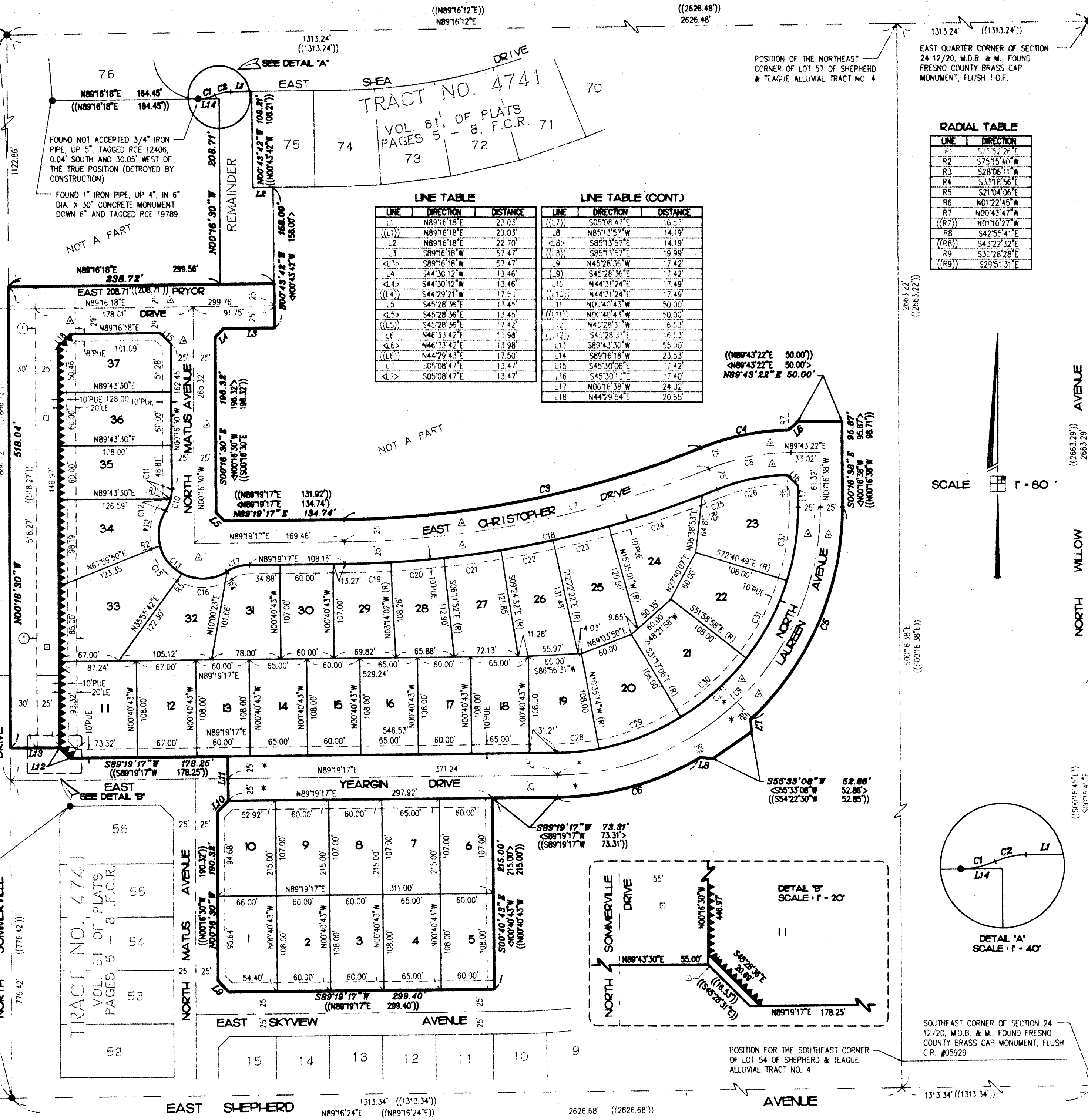
CENTER QUARTER CORNER OF SECTION 24 12/20, M.D.B. & M., FOUND 3/4" IRON PIPE, FLUSH TAGGED RCE 12406 C.R. #05234 (DESTROYED BY CONSTRUCTION)

TRACT NO. 4759 VOL. 61 OF PLATS PAGES 1-4, F.C.R.

30' PREVIOUSLY DEDICATED TO THE COUNTY OF FRESNO FOR PUBLIC STREET PURPOSES PER SHEPHERD & ALLUVIAL TRACT NO. 4, RECORDED IN BOOK 2 OF RECORD OF SURVEYS AT PAGE 81, FRESNO COUNTY RECORDS.

FOUND 1" IRON PIPE, UP 4" IN 6" DIA. X 30" CONCRETE MONUMENT DOWN 6" AND TAGGED RCE 19789

SOUTH QUARTER CORNER OF SECTION 24 12/20, M.D.B. & M., FRESNO 3/4" IRON PIPE, 4" DOWN, TAGGED RCE 14344, C.R. #05233



**LINE TABLE**

LINE	DIRECTION	DISTANCE
(L1)	N89°16'18"E	23.03
(L2)	N89°16'18"E	22.70
(L3)	S89°16'18"W	57.47
(L4)	S44°30'12"W	13.46
(L5)	S45°28'36"E	13.45
(L6)	S45°28'36"E	13.45
(L7)	S05°08'47"E	13.47

**LINE TABLE (CONT.)**

LINE	DIRECTION	DISTANCE
(L8)	N89°16'18"E	23.03
(L9)	S89°16'18"W	57.47
(L10)	S44°30'12"W	13.46
(L11)	S45°28'36"E	13.45
(L12)	S45°28'36"E	13.45
(L13)	S05°08'47"E	13.47
(L14)	S45°30'06"E	23.53
(L15)	S45°30'06"E	23.53
(L16)	S45°30'12"E	17.42
(L17)	N00°16'38"W	24.02
(L18)	N44°29'54"E	20.65

**RADIAL TABLE**

LINE	DIRECTION
R1	S75°52'36"E
R2	S75°52'40"W
R3	S28°06'11"W
R4	S33°18'56"E
R5	S21°04'06"E
R6	N01°22'45"W
R7	N00°43'47"W
(R7)	N01°10'27"W
R8	S42°55'41"E
(R8)	S43°22'32"E
R9	S30°28'28"E
(R9)	S29°51'31"E

MAP OF  
**TRACT NO. 4857**  
PHASE TWO OF TRACT NO. 4741  
IN THE CITY OF FRESNO  
FRESNO COUNTY, CALIFORNIA  
SURVEYED AND PLATTED IN MAY, 1996  
BY EDWARD D. DUNKEL AND ASSOCIATES  
CONSISTING OF TWO SHEETS  
SHEET 2 OF 2 SHEETS

**BASIS OF BEARINGS**  
THE EAST LINE OF THE SOUTHWEST QUARTER OF SECTION 24, T.12 S., R.20 E., M.D.B. & M. WAS TAKEN TO BE N 00°16'30" E, ALSO BEING THE CENTERLINE OF NORTH CHESTNUT AVENUE, PER THE MAP OF TRACT NO. 4362, RECORDED IN VOLUME 54 OF PLATS AT PAGES 23-25, FRESNO COUNTY RECORDS.

- LEGEND**
- EXISTING MONUMENT FOUND AND ACCEPTED OR AS NOTED.
  - ⊙ SET 1" O.D. IRON PIPE, 30" LONG, UP 4" IN 6" DIA. X 30" CONCRETE MONUMENT DOWN 6" AND TAGGED RCE-19789, EXCEPT AS NOTED.
  - (... ) PER RECORDED DATA FROM TRACT NO. 4362, RECORDED IN VOLUME 54 OF PLATS AT PAGES 23-25, FRESNO COUNTY RECORDS.
  - ((...)) PER RECORDED DATA FROM TRACT NO. 4741, RECORDED IN VOLUME 61 OF PLATS AT PAGES 5-8, FRESNO COUNTY RECORDS.
  - <...> PER RECORDED DATA PER DOCUMENT NO. 96140916, RECORDED IN OCTOBER 18, 1996, FRESNO COUNTY RECORDS.
  - PUE. PUBLIC UTILITY EASEMENT NOW OFFERED FOR DEDICATION FOR PUBLIC USE.
  - LE. LANDSCAPE EASEMENT NOW OFFERED FOR DEDICATION FOR PUBLIC USE.
  - ▲▲▲ INDICATES RELINQUISHMENT OF DIRECT ACCESS RIGHTS.
  - BLUE BORDER INDICATES THE LIMITS OF THIS SUBDIVISION.
  - △ INDICATES PORTIONS NOW OFFERED FOR DEDICATION FOR PUBLIC STREET PURPOSES.
  - INDICATES PORTIONS NOW OFFERED FOR DEDICATED TO THE CITY OF FRESNO FOR PUBLIC STREET PURPOSES.
  - \* INDICATES PORTIONS PREVIOUSLY DEDICATED TO THE CITY OF FRESNO FOR PUBLIC STREET PURPOSES PER DOCUMENT RECORDED JUNE 2, 1997 AS DOCUMENT NO. 97070177, AND RE-RECORDED JULY 15, 1997 AS AS DOCUMENT NO. 97089284, OFFICIAL RECORDS.
  - C.R. # INDICATES CORNER RECORD ON FILE WITH FRESNO COUNTY SURVEYOR.
  - ① 45' PACIFIC GAS & ELECTRIC COMPANY EASEMENT RECORDED JULY 10, 1997 AS DOCUMENT NO. 97087679, OFFICIAL RECORDS FRESNO COUNTY.

**\* NOTE \***  
1" O.D. X 30" LONG IRON PIPE TO BE SET 6" DOWN AND TAGGED RCE-19789, AT ALL LOT CORNERS, ANGLE POINTS, BEGINNING OF CURVES AND END OF CURVES, OR AS NOTED WITHIN THE TIME SPECIFIED IN THE SUBDIVISION AGREEMENT FOR THIS TRACT.

**CURVE TABLE**

CURVE	RADIUS	LENGTH	CHORD	DELTA
C1	50.00	20.00	19.87	22°55'10"
(C1)	50.00	20.00	19.87	22°55'10"
C2	45.00	18.00	17.88	22°55'10"
(C2)	45.00	18.00	17.88	22°55'10"
C3	1110.00	412.30	409.94	21°16'56"
(C3)	1110.00	412.31	409.94	21°16'56"
C4	275.00	101.90	101.32	21°13'52"
(C4)	275.00	101.90	101.32	21°13'52"
C5	325.00	268.58	261.00	47°20'57"
(C5)	325.00	268.58	261.00	47°20'57"
C6	325.00	266.04	258.68	46°54'06"
(C6)	325.00	266.04	258.68	46°54'06"
C7	1135.00	421.59	419.17	21°16'56"
(C7)	1135.00	421.59	419.17	21°16'56"
C8	250.00	92.64	92.11	21°13'52"
(C8)	250.00	92.64	92.11	21°13'52"
C9	300.00	184.32	181.44	35°12'09"
(C9)	300.00	184.32	181.44	35°12'09"
C10	45.00	25.63	25.29	32°38'13"

**CURVE TABLE (CONT.)**

CURVE	RADIUS	LENGTH	CHORD	DELTA
C11	45.00	11.31	11.26	14°24'04"
(C11)	45.00	11.31	11.26	14°24'04"
C12	45.00	14.32	14.26	18°14'09"
(C12)	45.00	14.32	14.26	18°14'09"
C13	50.00	135.85	97.76	155°40'39"
(C13)	50.00	135.85	97.76	155°40'39"
C14	50.00	41.10	39.96	47°06'03"
(C14)	50.00	41.10	39.96	47°06'03"
C15	50.00	41.15	40.00	47°09'29"
(C15)	50.00	41.15	40.00	47°09'29"
C16	50.00	53.60	51.07	61°25'07"
(C16)	50.00	53.60	51.07	61°25'07"
C17	45.00	25.63	25.29	32°38'13"
(C17)	45.00	25.63	25.29	32°38'13"
C18	1160.00	430.88	428.41	21°16'56"
(C18)	1160.00	430.88	428.41	21°16'56"
C19	1160.00	111.04	111.00	05°29'05"
(C19)	1160.00	111.04	111.00	05°29'05"
C20	1160.00	60.01	60.00	02°57'50"
(C20)	1160.00	60.01	60.00	02°57'50"
C21	1160.00	65.01	65.00	03°12'40"
(C21)	1160.00	65.01	65.00	03°12'40"
C22	1160.00	60.01	60.00	02°57'50"
(C22)	1160.00	60.01	60.00	02°57'50"
C23	1160.00	65.01	65.00	03°12'39"
(C23)	1160.00	65.01	65.00	03°12'39"
C24	1160.00	111.04	111.00	05°29'05"
(C24)	1160.00	111.04	111.00	05°29'05"
C25	1160.00	18.07	18.07	00°53'33"
(C25)	1160.00	18.07	18.07	00°53'33"
C26	225.00	80.82	80.39	20°34'54"
(C26)	225.00	80.82	80.39	20°34'54"
C27	275.00	430.04	387.54	89°35'55"
(C27)	275.00	430.04	387.54	89°35'55"
C28	275.00	47.56	47.50	09°54'31"
(C28)	275.00	47.56	47.50	09°54'31"
C29	275.00	99.34	98.80	20°41'52"
(C29)	275.00	99.34	98.80	20°41'52"
C30	275.00	99.34	98.80	20°41'52"
(C30)	275.00	99.34	98.80	20°41'52"
C31	275.00	99.34	98.80	20°41'52"
(C31)	275.00	99.34	98.80	20°41'52"
C32	275.00	84.46	84.13	17°35'48"
(C32)	275.00	84.46	84.13	17°35'48"