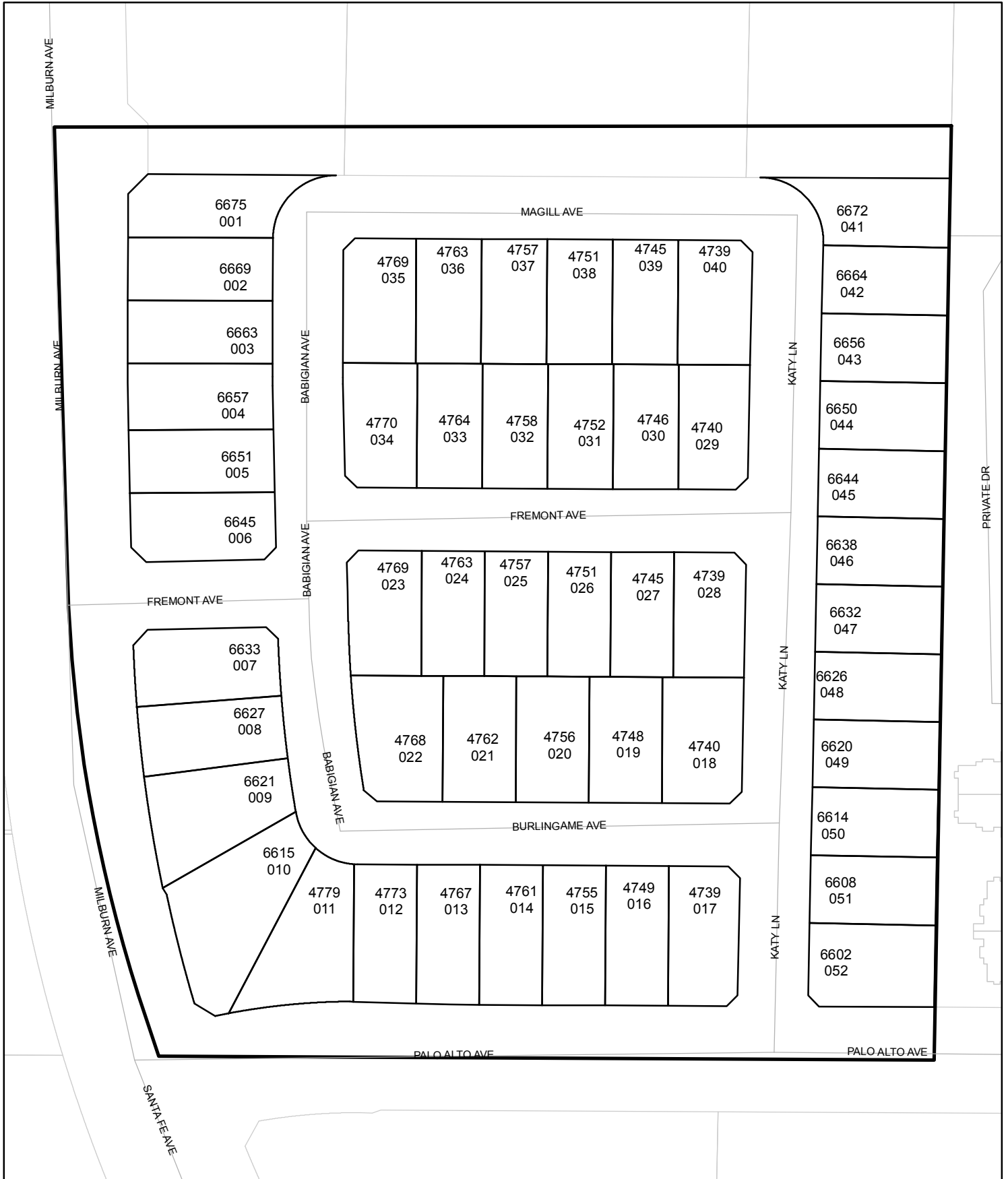




Street Names, Addresses and (Lot Numbers) for T4852

Prepared on Thu Oct 18 01:02:49 2018



NORTH 1/4 CORNER SECTION 2, 13/19 FOUND 2 1/2" IRON ROD 2" DIA. 1.5" HIGH. TIES ON FILE WITH FRESNO COUNTY SURVEYOR OR 4173

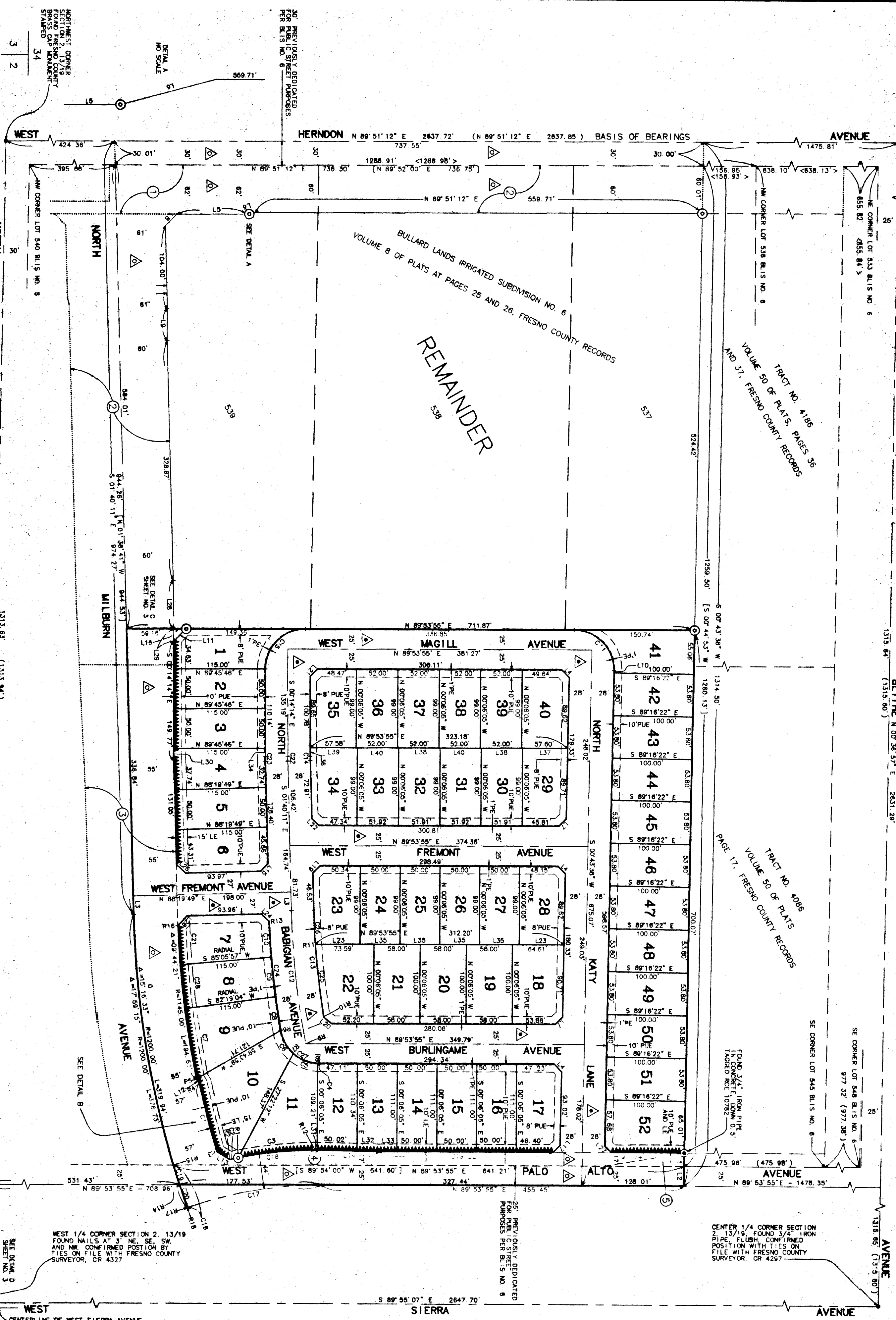
NORTH

TRACT NO. 4852

PHASE 1 OF TENTATIVE TRACT NO. 481

A PLANNED DEVELOPMENT IN THE CITY OF FRESNO FRESNO COUNTY, CALIFORNIA SURVEYED AND PLATTED IN MARCH, 2001 BY HARBOUR & ASSOCIATES CONSISTING OF 3 SHEETS SHEET 2 OF 3

SCALE: 1" = 80'
SEE SHEET NO. 3 FOR DATA TABLES AND LEGEND



WEST

NORTH

CORNELIA

WEST

WEST

NORTH

WEST PALO ALTO AVENUE

SCALE 1" = 20'



DETAIL B
SCALE 1" = 20'

Harbour & Associates
3000 Westwood Avenue, Suite 109, Costa Mesa, California 92626
(714) 440-1800 • Fax: (714) 440-1801 • www.harbour.com