



Street Names, Addresses and (Lot Numbers) for T4831

Prepared on Tue Jun 06 23:50:41 2017



TRACT NO. 4831

CONSISTING OF TWO SHEETS
SHEET TWO OF TWO SHEETS
IN THE CITY OF FRESNO, COUNTY OF FRESNO, STATE OF CALIFORNIA
SURVEYED AND PLATTED IN FEBRUARY 2003, BY GARY GIANNETTA

LEGEND:

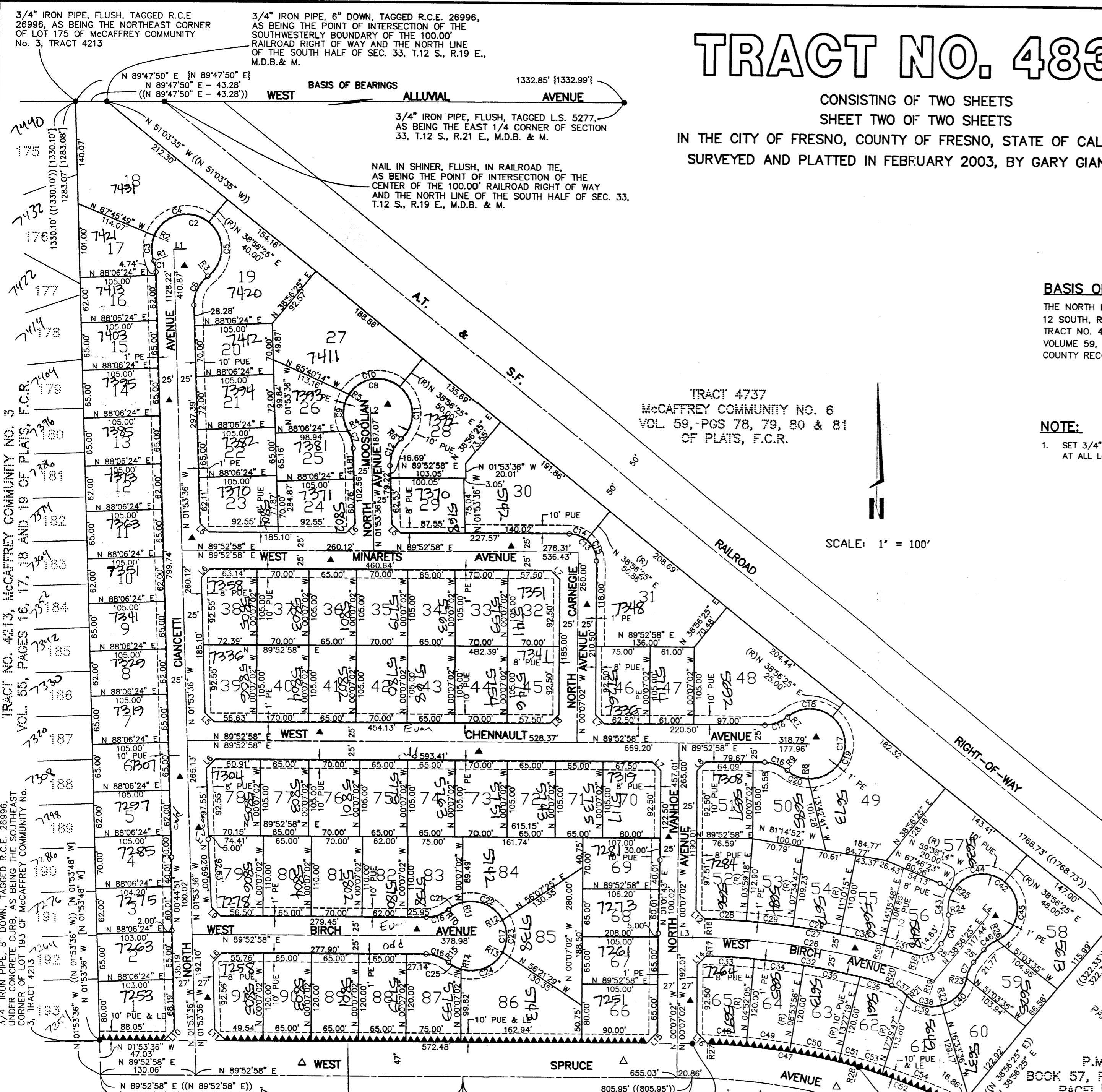
- MONUMENT FOUND AND ACCEPTED AS NOTED
- SET 3/4" IRON PIPE, 30" LONG, 6" DOWN BELOW GROUND, TAGGED R.C.R. 26996
- ▲ NOW OFFERED FOR DEDICATION FOR PUBLIC STREET PURPOSES
- ▲▲▲▲ INDICATES RELINQUISHMENT OF DIRECT ACCESS RIGHTS
- () RECORD DATA AS PER TRACT NO. 4148, McCAFFREY COMMUNITY NO. 2, RECORDED IN VOLUME 53, PAGES 32, 33, 34 AND 35 OF PLATS, FRESNO COUNTY RECORDS
- { } RECORD DATA AS PER TRACT NO. 4737, McCAFFREY COMMUNITY NO. 6, RECORDED IN VOLUME 59, PAGES 78, 79, 80 AND 81 OF PLATS, FRESNO COUNTY RECORDS
- [] RECORD DATA AS PER TRACT NO. 4213, McCAFFREY COMMUNITY NO. 3, RECORDED IN VOLUME 55, PAGES 16, 17, 18 AND 19 OF PLATS, FRESNO COUNTY RECORDS
- (()) RECORD DATA AS PER PARCEL MAP NO. 96-20, RECORDED IN BOOK 57, PAGES 84 AND 85 OF PARCEL MAPS, FRESNO COUNTY RECORDS
- LE LANDSCAPE EASEMENT NOW OFFERED FOR DEDICATION FOR PUBLIC USE.
- PE PEDESTRIAN EASEMENT NOW OFFERED FOR DEDICATION FOR PUBLIC USE
- PUE PUBLIC UTILITY EASEMENT NOW OFFERED FOR DEDICATION FOR PUBLIC USE
- △ PREVIOUSLY DEEDED TO THE CITY OF FRESNO FOR PUBLIC STREET EASEMENT PURPOSES RECORDED OCTOBER 8, 1991 AS DOCUMENT NO. 91125196, F.C.R.
- BLUE BORDER INDICATES THE LIMITS OF THIS SUBDIVISION

BASIS OF BEARINGS:

THE NORTH LINE OF THE SOUTH HALF OF SECTION 33, TOWNSHIP 12 SOUTH, RANGE 19 EAST BEARS N 89°47'50" E AS PER TRACT NO. 4737, McCAFFREY COMMUNITY NO. 6, RECORDED IN VOLUME 59, PAGES 78, 79, 80 AND 81 OF PLATS, FRESNO COUNTY RECORDS

NOTE:

1. SET 3/4" IRON PIPE, 6" DOWN, TAGGED RCE 26996 AT ALL LOT CORNERS



SCALE: 1" = 100'

LINE	DIRECTION	DISTANCE
L1	N 88°06'24" E	17.00'
L2	N 88°06'24" E	10.00'
L3	N 89°52'58" E	20.89'
L4	N 51°03'35" W	1" 20"
L5	N 46°00'19" W	17.95'
L6	N 43°59'41" E	17.40'
L7	N 45°07'02" E	17.68'
L8	N 44°52'58" E	17.68'
L9	N 46°33'01" W	18.11'
L10	N 43°59'41" E	20.88'
L11	N 46°00'19" W	21.54'
L12	N 44°49'12" W	17.77'
L13	N 73°29'00" E	20.59'
L14	N 45°51'17" E	17.56'
L15	N 44°52'58" E	21.21'
L16	N 44°39'01" W	21.39'

RADIAL	DIRECTION
R1	S 69°26'06" W
R2	N 67°45'49" W
R3	S 38°00'47" E
R4	S 58°59'47" W
R5	N 58°52'10" W
R6	S 43°26'04" E
R7	N 39°54'18" W
R8	S 01°33'31" W
R9	S 39°40'14" W
R10	N 39°54'18" W
R11	N 14°35'16" W
R12	N 62°13'49" E
R13	S 62°27'53" E
R14	S 15°51'34" W
R15	S 39°40'14" W
R16	N 00°49'46" E
R17	N 17°40'27" E
R18	N 19°22'33" E
R19	N 16°12'43" E
R20	N 16°09'13" E
R21	S 46°43'55" W
R22	S 16°09'13" E
R23	S 46°43'55" W
R24	S 78°53'21" W
R25	N 59°38'14" W
R26	S 24°32'04" E
R27	N 1°19'26" E
R28	N 15°19'47" E
R29	N 24°40'16" E
R30	N 14°42'33" E

CURVE	RADIUS	LENGTH	TANGENT	DELTA
C1	48.00'	15.64'	7.89'	18°40'18"
C2	47.00'	207.17'	64.04'	252°33'07"
C3	47.00'	35.11'	18.42'	42°48'05"
C4	47.00'	87.53'	63.17'	106°42'14"
C5	47.00'	84.55'	59.14'	103°02'48"
C6	48.00'	45.14'	24.39'	53°52'49"
C7	48.00'	24.39'	12.46'	29°08'37"
C8	47.00'	211.29'	58.49'	257°34'06"
C9	47.00'	52.61'	29.45'	64°08'03"
C10	47.00'	78.59'	52.02'	95°48'35"
C11	47.00'	80.08'	53.71'	97°37'31"
C12	48.00'	40.60'	21.60'	48°27'32"
C13	37.00'	58.12'	37.00'	90°00'00"
C14	37.00'	25.22'	13.12'	39°03'27"
C15	37.00'	32.90'	17.63'	50°56'33"
C16	48.00'	33.33'	17.37'	39°47'16"
C17	47.00'	212.93'	56.44'	259°34'32"
C18	47.00'	64.68'	38.64'	78°50'43"
C19	47.00'	116.99'	138.93'	142°37'06"
C20	47.00'	31.26'	16.23'	38°06'43"
C21	47.00'	20.77'	10.56'	25°19'02"
C22	47.00'	63.01'	37.26'	76°48'05"
C23	47.00'	45.37'	24.83'	55°18'18"
C24	47.00'	64.25'	38.28'	78°19'27"
C25	47.00'	19.53'	9.91'	23°48'40"
C26	992.00'	337.50'	170.40'	19°29'35"
C27	1017.00'	298.99'	150.58'	16°50'41"
C28	1017.00'	56.07'	28.04'	03°09'31"
C29	1017.00'	63.75'	31.88'	03°35'29"
C30	1017.00'	62.81'	31.41'	03°32'18"
C31	1017.00'	52.63'	26.32'	02°57'54"
C32	967.00'	256.79'	129.15'	15°12'54"
C33	967.00'	65.33'	32.68'	03°52'16"
C34	967.00'	68.03'	34.03'	04°01'51"
C35	967.00'	76.90'	38.47'	04°33'23"
C36	967.00'	46.53'	23.27'	02°45'24"
C37	48.00'	25.57'	13.10'	30°31'12"
C38	47.00'	104.10'	84.07'	126°54'07"
C39	47.00'	51.59'	28.74'	62°53'08"
C40	47.00'	52.51'	29.38'	64°00'59"
C41	48.00'	41.93'	22.41'	50°03'04"
C42	47.00'	210.47'	58.54'	256°34'35"
C43	47.00'	34.02'	17.79'	41°28'25"
C44	47.00'	80.86'	54.62'	98°34'39"
C45	47.00'	95.59'	75.99'	116°31'31"
C46	48.00'	22.22'	11.31'	3°32'39"
C47	847.00'	207.05'	104.04'	14°00'21"
C48	847.00'	52.39'	26.21'	3°32'39"
C49	847.00'	59.59'	29.81'	4°01'51"
C50	847.00'	67.36'	33.70'	4°33'23"
C51	847.00'	27.71'	13.86'	1°52'28"
C52	922.17'	150.35'	75.34'	9°20'29"
C53	922.17'	34.87'	17.44'	2°10'00"
C54	922.17'	115.46'	57.81'	7°10'29"

OFFICIAL ADDRESS NUMBERS WHICH APPEARS ON THIS PAGE MUST BE INSTALLED BEFORE FINAL INSPECTION AS PER SECTION 12-1314 F.M.S. (MINIMUM SIZE 3" HIGH WITH 1/8" STROKE)

ISSUED BY: *[Signature]* DATE: 12/2/03

P.M. 96-20
BOOK 57, PAGES 84 & 85 OF
PARCEL MAPS, F.C.R.
3/4" IRON PIPE, 6" DOWN, TAGGED
R.C.E. 26996, AS BEING THE MOST WESTERLY
CORNER OF PARCEL A OF P.M. No. 96-20

TRACT NO. 4213, McCAFFREY COMMUNITY NO. 3
VOL. 55, PAGES 16, 17, 18 AND 19 OF PLATS, F.C.R.

TRACT NO. 4148, McCAFFREY COMMUNITY NO. 2
VOL. 53, PAGES 32, 33, 34 AND 35 OF PLATS, FRESNO COUNTY RECORDS

3/4" IRON PIPE, 12" DOWN, TAGGED R.C.E. 26996
AS BEING A POINT OF COMPOUND CURVATURE