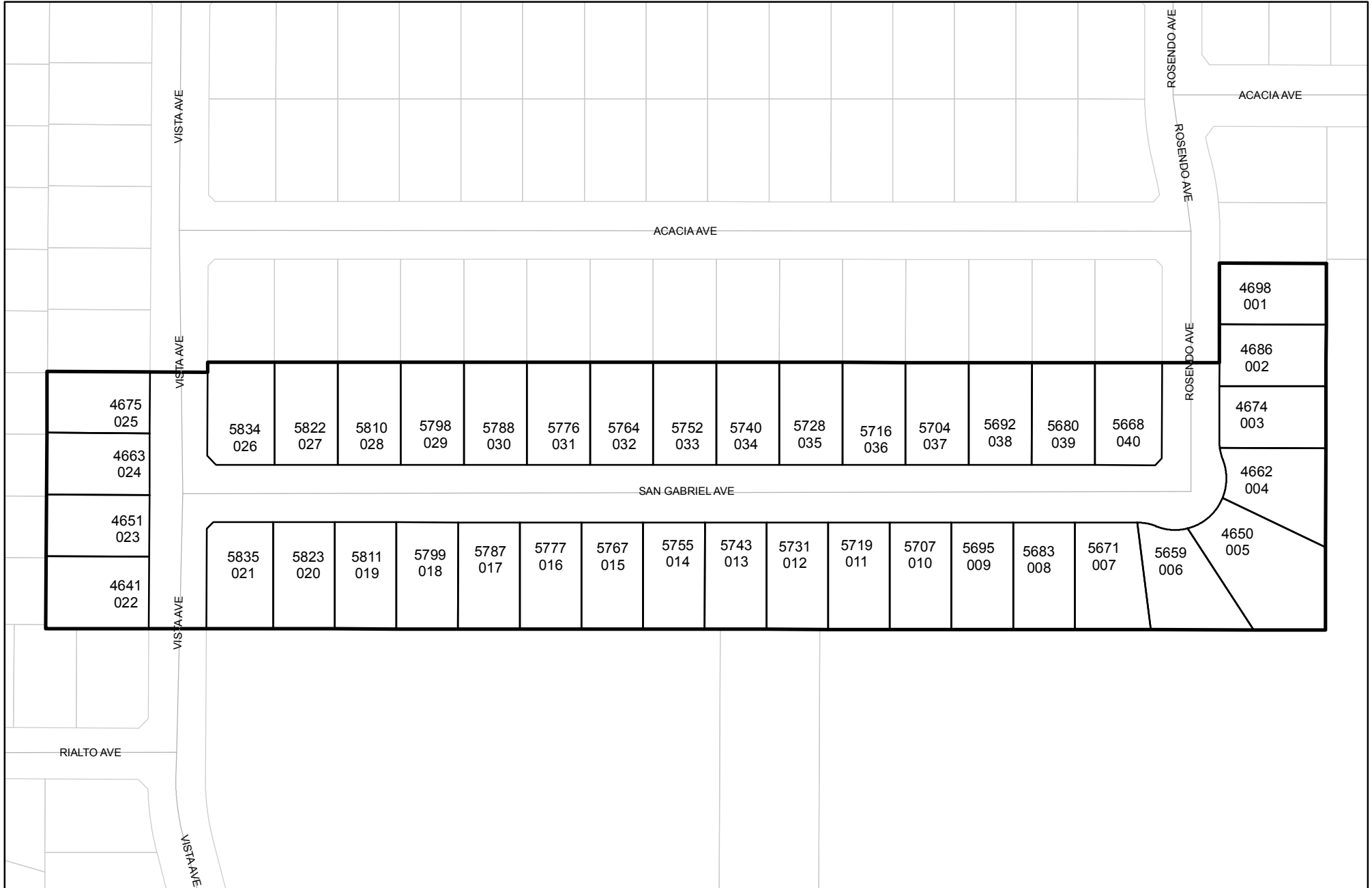




Prepared on Thu Feb 14 22:38:29 2019

Street Names, Addresses and (Lot Numbers) for T4830



NORTH VISTA AVENUE

NORTH ROSENDO AVENUE

WEST ACACIA AVENUE

WEST SAN GABRIEL AVENUE

UNSUBDIVIDED

CENTRAL UNIFIED SCHOOL DISTRICT

N 00°09'49"W 660.22'

N 00°09'49"W 250.22'

N 00°09'49"W 249.64'

N 00°09'49"W 131.28'

N 00°27'15"W 93.60'

N 00°27'15"W 100.00'

N 00°27'15"W 100.00'

N 00°27'15"W 100.00'

N 00°27'15"W 100.00'

N 00°27'15"W 100.00'

N 00°27'15"W 100.00'

N 00°27'15"W 100.00'

N 00°27'15"W 100.00'

N 00°27'15"W 100.00'

N 00°27'15"W 100.00'

N 00°27'15"W 100.00'

N 00°27'15"W 100.00'

N 00°27'15"W 100.00'

N 00°27'15"W 100.00'

N 00°27'15"W 100.00'

N 00°27'15"W 100.00'

N 00°27'15"W 100.00'

N 00°27'15"W 100.00'

N 00°27'15"W 100.00'

N 00°27'15"W 100.00'

N 00°27'15"W 100.00'

N 00°27'15"W 100.00'

N 00°27'15"W 100.00'

N 00°27'15"W 100.00'

N 00°27'15"W 100.00'

N 00°27'15"W 100.00'

N 00°27'15"W 100.00'

N 00°27'15"W 100.00'

N 00°27'15"W 100.00'

N 00°27'15"W 100.00'

N 00°27'15"W 100.00'

N 00°27'15"W 100.00'

N 00°27'15"W 100.00'

N 00°27'15"W 100.00'

N 00°27'15"W 100.00'

N 00°27'15"W 100.00'

N 00°27'15"W 100.00'

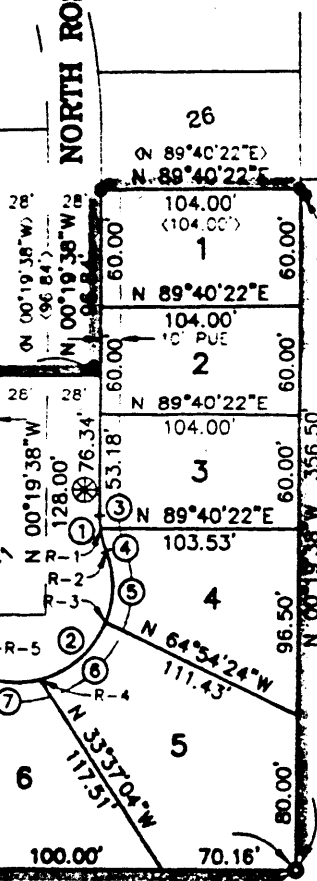
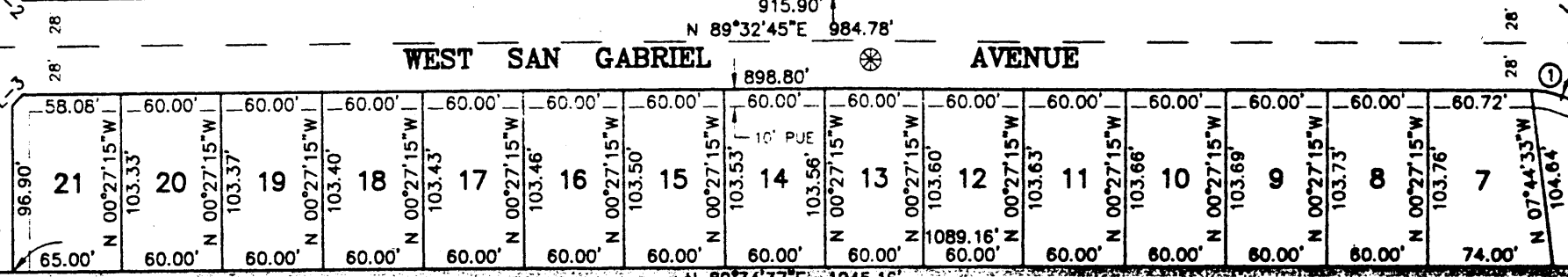
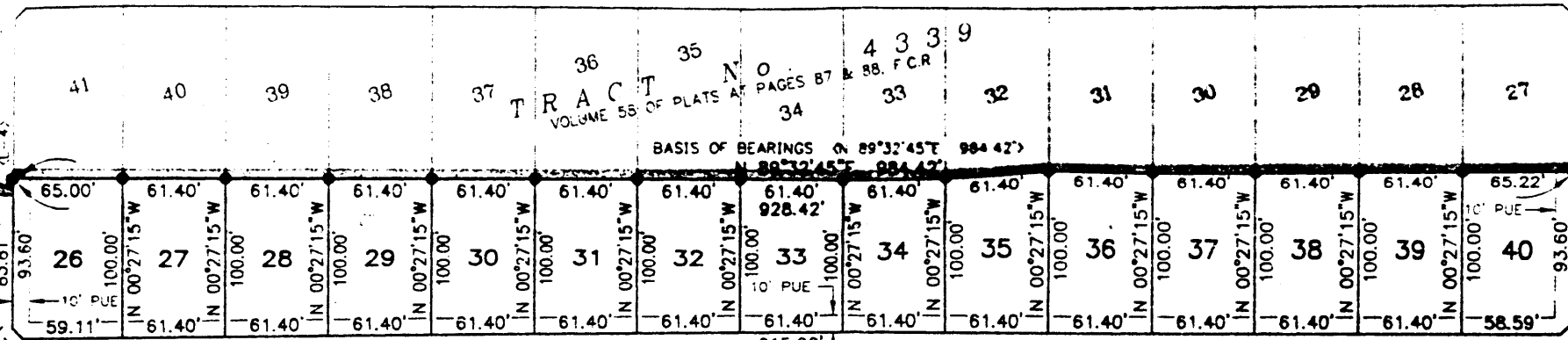
N 00°27'15"W 100.00'

N 00°27'15"W 100.00'

N 00°27'15"W 100.00'

N 00°27'15"W 100.00'

SOUTHWEST CORNER OF THE NORTHEAST 1/4 OF THE SOUTHWEST 1/4 OF SECTION 15, T. 13 S., R. 19 E., M.D.B. & M.



TRACT NO. 34 OF PLATS AT PAGES 87 & 88, F.C.R. VOLUME 55 OF BEARINGS ON 89°32'45"E 984.42'

