



Prepared on Wed Jun 13 22:38:53 2018

# Street Names, Addresses and (Lot Numbers) for T4826



# MAP OF TRACT No. 4826 PHASE II OF VESTING TENTATIVE TRACT NO. 4357

(A PLANNED DEVELOPMENT)  
IN THE CITY OF FRESNO, COUNTY OF FRESNO, STATE OF CALIFORNIA  
CONSISTING OF 3 SHEETS SHEET 3 OF 3 SHEETS  
SURVEYED & PLATTED MARCH, 1997 BY RABE ENGINEERING INC.  
CIVIL ENGINEERS—LAND SURVEYORS 2021 N. GATEWAY BLVD. FRESNO, CALIFORNIA 93727  
(559) 252-7223

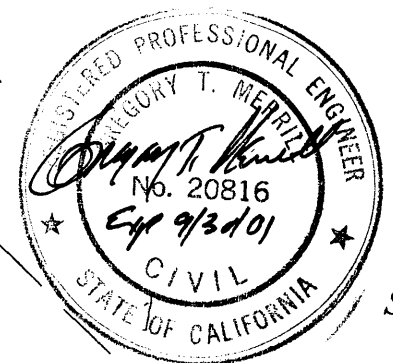
CURVE	RADIUS	LENGTH	DELTA
C1	178.00'	117.81'	37°55'20"
C2	375.00'	76.40'	11°40'24"
C3	200.00'	170.93'	48°58'05"
C4	363.00'	66.22'	10°27'08"
C5	390.00'	201.09'	29°32'31"
C6	122.00'	66.89'	31°24'50"
C7	200.00'	23.82'	06°49'28"
C8	375.00'	67.76'	10°21'12"
C9	200.00'	147.11'	42°08'37"
C10	178.00'	44.68'	14°22'50"
C11	375.00'	8.64'	01°19'12"
C12	178.00'	62.03'	19°58'04"
C13	178.00'	11.10'	03°34'26"
C14	375.00'	118.11'	18°02'47"
C15	150.00'	100.89'	38°32'09"
C16	390.00'	217.08'	31°53'31"
C17	390.00'	15.99'	02°21'00"

LINE	DIRECTION	DISTANCE
L1	S45°16'08"E	13.21'
L2	S44°43'52"W	24.81'
L3	N44°50'05"W	20.69'
L4	N45°09'55"E	8.98'
L5	N87°51'51"E	14.47'
L6	S40°40'19"W	12.91'
L7	N44°50'05"W	8.96'
L8	N45°09'55"E	8.98'
L9	S06°39'33"W	12.80'
L10	N44°50'05"W	8.96'
L11	S45°09'55"W	20.45'

- LEGEND:
- ⊙ — SET 3/4" IRON PIPE 30" LONG, 4" IN P.C.C. MONUMENT, DOWN 6" BELOW GROUND, TAGGED RCE 20816
  - — MONUMENT FOUND AND ACCEPTED AS NOTED
  - PPUE — PLANTING AND PUBLIC UTILITY EASEMENT NOW OFFERED FOR DEDICATION FOR PUBLIC USE
  - PUE — PUBLIC UTILITY EASEMENT NOW OFFERED FOR DEDICATION FOR PUBLIC USE
  - LPUE — LANDSCAPE AND PUBLIC UTILITY EASEMENT NOW OFFERED FOR DEDICATION FOR PUBLIC USE
  - ▲ — NOW OFFERED FOR DEDICATION FOR PUBLIC STREET PURPOSES
  - ▲▲▲ — INDICATES RELINQUISHMENT OF DIRECT VEHICULAR ACCESS RIGHTS
  - ▲ — PREVIOUSLY DEEDED FOR PUBLIC STREET PURPOSES BY DOC. NO. 90101410 RECORDED AUGUST 24, 1990 O.R.C.
  - △ — PREVIOUSLY DEDICATED FOR PUBLIC STREET PURPOSES PER MAP OF J.C. FORKNER'S FIG GARDENS SUBDIVISION NO. 3 VOL. 8, PG. 79 PLATS, F.C.R.
  - ▲ — PREVIOUSLY DEEDED FOR PUBLIC STREET PURPOSES PER DOCUMENT NO. 90055283 RECORDED MAY 14, 1990, O.R.F.C.
  - ▲ — PREVIOUSLY DEEDED FOR SANITARY SEWER LIFT STATION PURPOSES PER DOCUMENT NO. 91023295 RECORDED FEBRUARY 27, 1991, O.R.F.C.
  - — — — — BLUE BORDER INDICATES THE LIMITS OF THIS SUBDIVISION
- NOTE:  
SET 1" O.D. IRON PIPE 30" LONG, 6" DOWN TAGGED RCE 20816 AT ALL LOT CORNERS AND THE BEGINNING AND END OF CURVES.

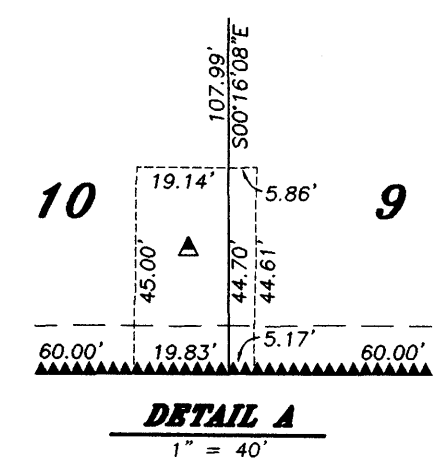
TRACT NO. 4356  
PHASE II OF TRACT NO 4142  
VOL 54, PAGES 49 - 52  
OF PLATS  
F.C.R.

110' EASEMENT FOR TOWER AND WIRE, ELECTRIC TRANSMISSION LINES RECORDED MARCH 9, 1988 BK 2579 PG 342 DOC. NO. 14300 BK 1084 PG 226, DOC. NO. 6422, O.R.F.C.

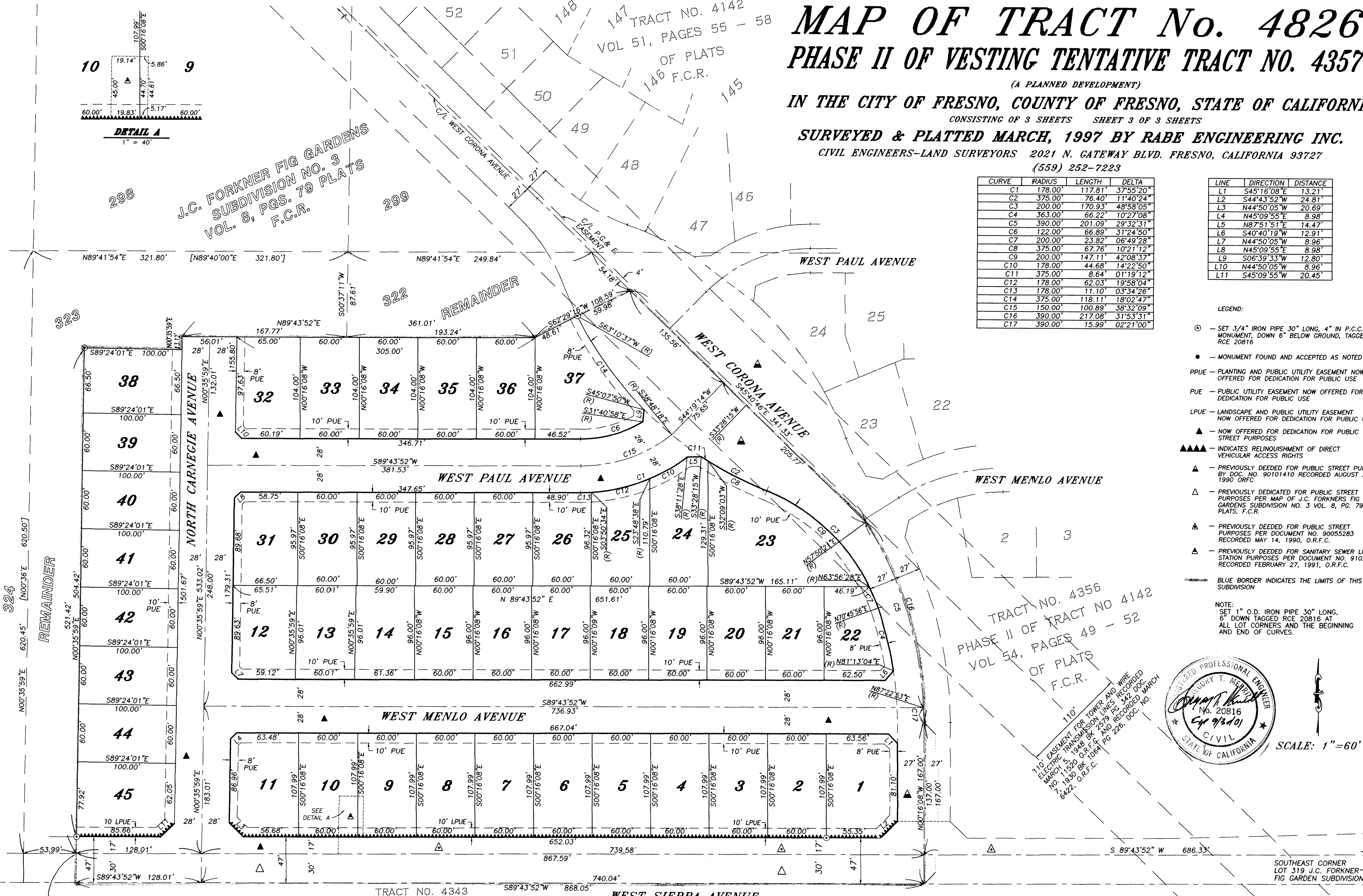


SCALE: 1"=60'

SOUTHEAST CORNER LOT 319 J.C. FORKNER FIG GARDEN SUBDIVISION



J.C. FORKNER FIG GARDENS  
SUBDIVISION NO. 3  
VOL. 8, PGS. 79 PLATS  
F.C.R.



TRACT NO. 4343  
TREND HOMES NO. 24  
VOL. 53, OF PLATS, PGS. 51-53, F.C.R.