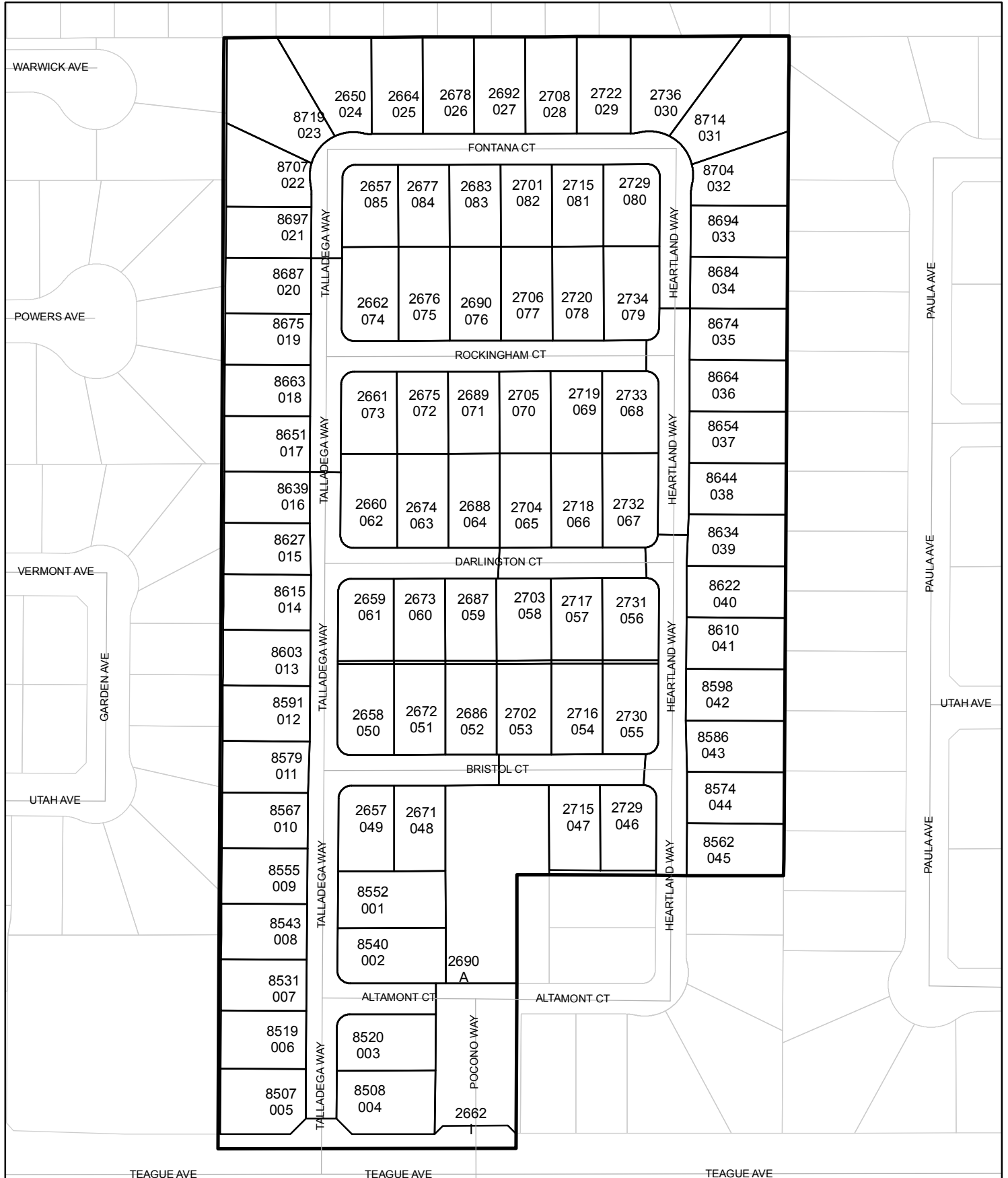




# Street Names, Addresses and (Lot Numbers) for T4824

Prepared on Wed Jun 13 22:39:16 2018



# MAP OF TRACT NO. 4824

## PHASE III OF TENTATIVE TRACT NO. 4736

A PLANNED DEVELOPMENT  
IN THE CITY OF FRESNO  
FRESNO COUNTY, CALIFORNIA  
SURVEYED AND PLATTED IN JANUARY, 1994  
BY EDWARD D. DUNKEL AND ASSOCIATES

CONSISTING OF TWO SHEETS  
SHEET 2 OF 2 SHEETS

### BASIS OF BEARINGS

THE WEST LINE OF THE SOUTHEAST QUARTER OF SECTION 25, TOWNSHIP 12 SOUTH, RANGE 20 EAST, MOUNT DIABLO BASE AND MERIDIAN, WAS TAKEN TO BE N00°01'18"W AS SHOWN ON TRACT MAP NO. 4237, RECORDED IN VOLUME 58 OF PLATS, AT PAGES 89 & 90, OF FRESNO COUNTY RECORDS.

### LEGEND

- EXISTING MONUMENT FOUND AND ACCEPTED OR AS NOTED.
- ⊙ SET 1" O.D. IRON PIPE, 30' LONG, UP 4", IN 6" DIA. x 30" CONCRETE MONUMENT DOWN 6" AND TAGGED RCE-19789, EXCEPT AS NOTED.
- ( ) RECORD DATA PER PARCEL MAP NO. 3273 RECORDED IN BOOK 27 OF PARCEL MAPS, AT PAGE 5, FRESNO COUNTY RECORDS.
- [ ] RECORD DATA PER TRACT NO. 4237, RECORDED IN VOLUME 58 OF PLATS AT PAGES 89 & 90, FRESNO COUNTY RECORDS.
- LE LANDSCAPE EASEMENT NOW OFFERED FOR DEDICATION FOR PUBLIC USE.
- PUE PUBLIC UTILITY EASEMENT NOW OFFERED FOR DEDICATION FOR PUBLIC USE.
- EFA EMERGENCY FIRE ACCESS EASEMENT NOW OFFERED FOR DEDICATION FOR PUBLIC USE.
- ▲▲▲▲ INDICATES RELINQUISHMENT OF DIRECT ACCESS RIGHTS.
- △ INDICATES PORTIONS NOW OFFERED FOR DEDICATION FOR PUBLIC STREET PURPOSES.
- BLUE BORDER INDICATES THE LIMITS OF THIS SUBDIVISION.

### NOTES

1. OUTLOT "A" IS FOR PARK PURPOSES
  2. OUTLOTS "B-F" ARE FOR PRIVATE STREET, INGRESS AND EGRESS, PRIVATE LANDSCAPE DRAINAGE AND PARKING PURPOSES.
- \* NOTE \*  
1" O.D. x 30" LONG IRON PIPE TO BE SET 6" DOWN AND TAGGED RCE-19789, AT ALL LOT CORNERS, ANGLE POINTS, BEGINNING OF CURVES AND END OF CURVES, OR AS NOTED WITHIN THE TIME SPECIFIED IN THE SUBDIVISION AGREEMENT FOR THIS TRACT.

### CURVE TABLE

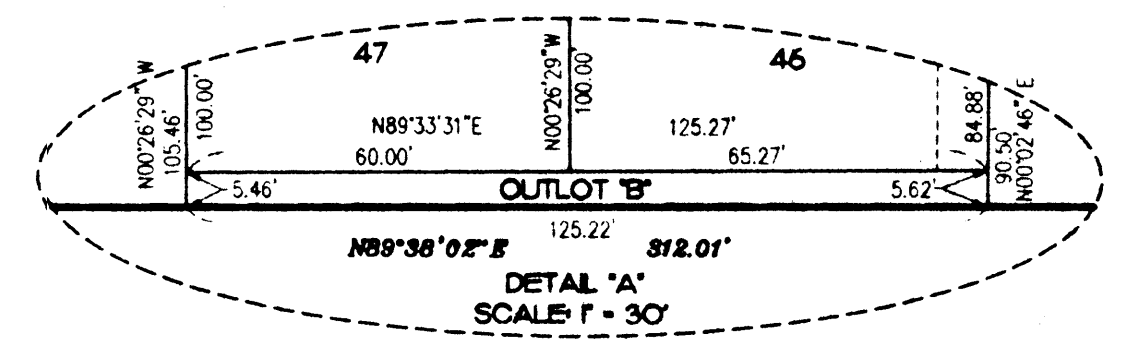
| CURVE | RADIUS | LENGTH | CHORD | DELTA     |
|-------|--------|--------|-------|-----------|
| C1    | 15.00  | 23.67  | 21.29 | 90°24'44" |
| C2    | 15.00  | 23.45  | 21.14 | 89°35'16" |
| C3    | 45.00  | 10.29  | 10.27 | 13°06'16" |
| C4    | 51.00  | 33.81  | 33.20 | 37°59'06" |
| C5    | 51.00  | 33.81  | 33.20 | 37°59'06" |
| C6    | 51.00  | 43.25  | 41.96 | 48°35'11" |
| C7    | 51.00  | 33.81  | 33.20 | 37°59'06" |
| C8    | 45.00  | 10.29  | 10.27 | 13°06'16" |
| C9    | 45.00  | 10.29  | 10.27 | 13°06'16" |
| C10   | 51.00  | 24.39  | 24.16 | 27°24'19" |
| C11   | 51.00  | 36.11  | 35.36 | 40°33'58" |
| C12   | 51.00  | 43.37  | 42.08 | 48°43'30" |
| C13   | 51.00  | 24.39  | 24.16 | 27°24'19" |
| C14   | 45.00  | 10.29  | 10.27 | 13°06'16" |

### LINE TABLE

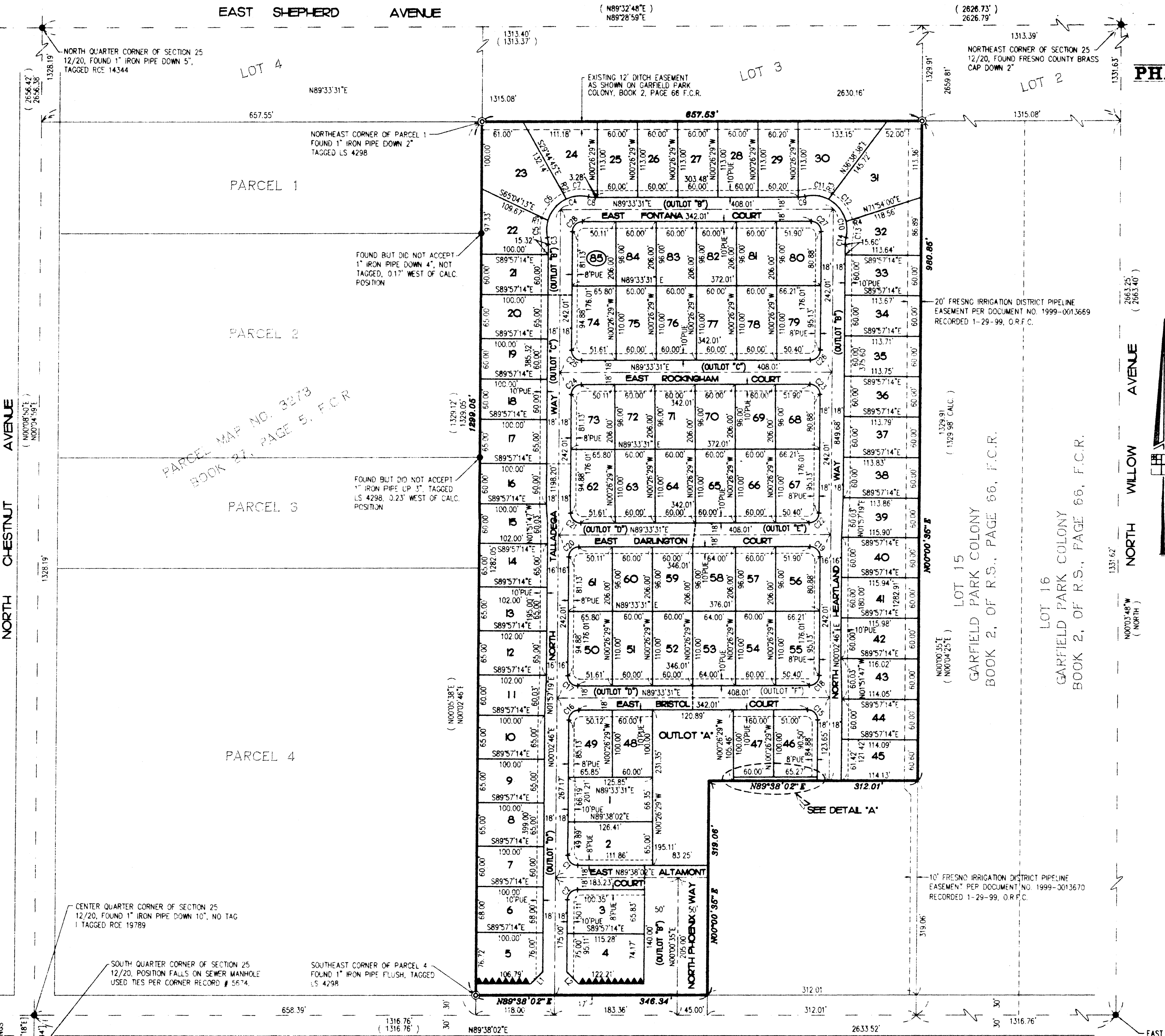
| LINE | DIRECTION   | DISTANCE |
|------|-------------|----------|
| L1   | S44°50'24"W | 25.52    |
| L2   | N45°09'36"W | 25.45    |

### RADIAL TABLE

| RADIAL | BEARING     |
|--------|-------------|
| R1     | N73°54'31"W |
| R2     | N25°19'20"W |
| R3     | N27°01'13"E |
| R4     | N75°44'43"E |



| REVISIONS |  |
|-----------|--|
|           |  |



SCALE 1" = 100'