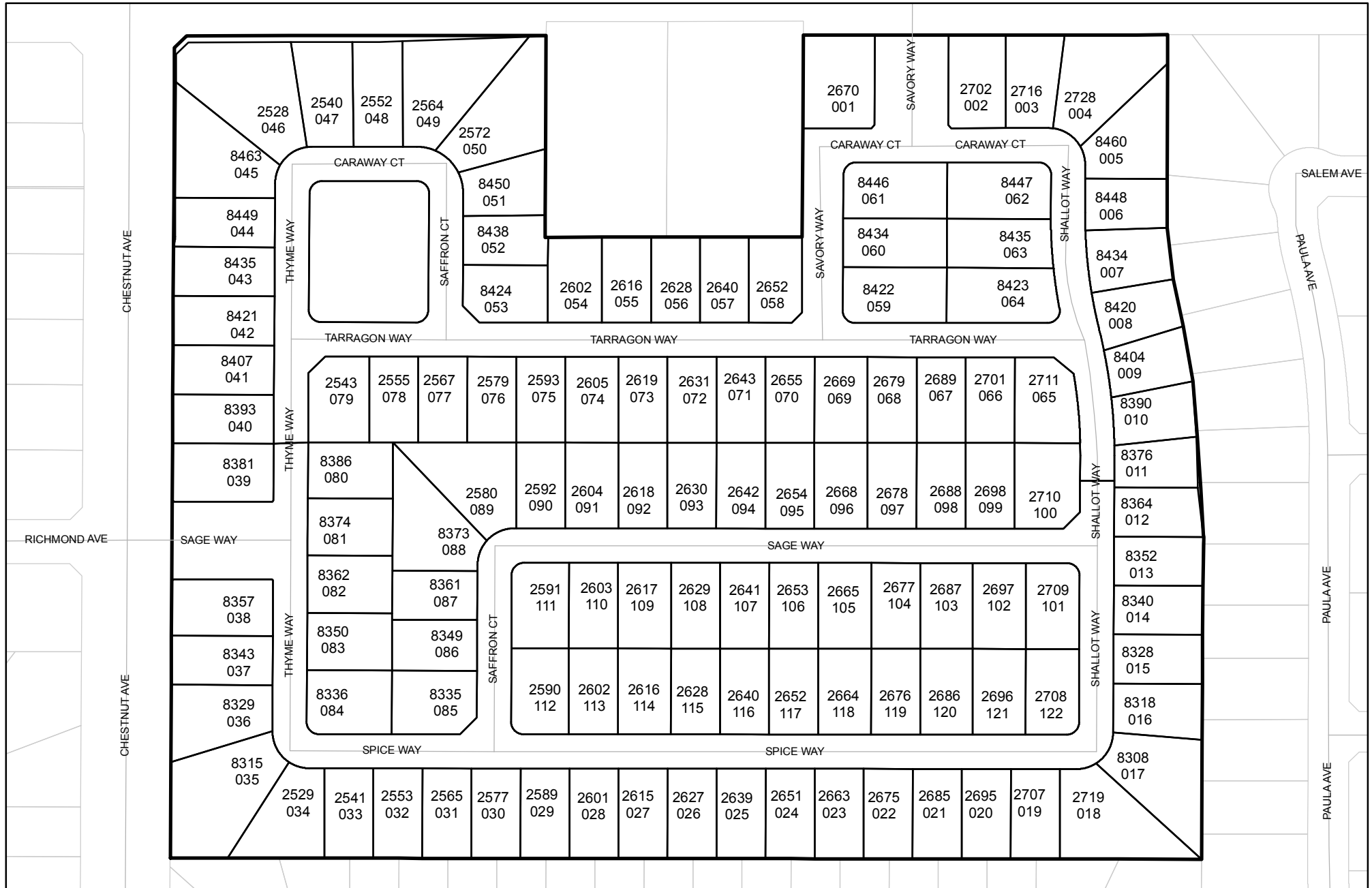




# Street Names, Addresses and (Lot Numbers) for T4823

Prepared on Thu Oct 18 01:06:02 2018



# MAP OF TRACT NO. 4823

PHASE II OF TENTATIVE TRACT NO. 4736

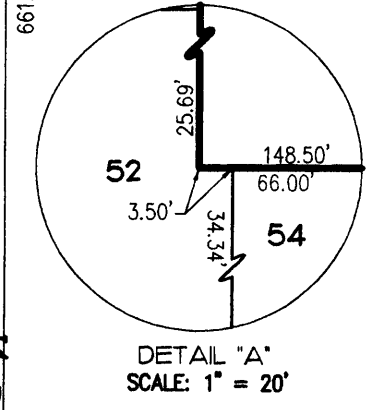
A PLANNED DEVELOPMENT  
IN THE CITY OF FRESNO  
FRESNO COUNTY, CALIFORNIA  
SURVEYED AND PLATTED IN JANUARY, 1994  
BY EDWARD D. DUNKEL AND ASSOCIATES  
CONSISTING OF TWO SHEETS  
SHEET 2 OF 2 SHEETS

## BASIS OF BEARINGS

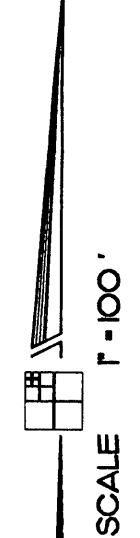
THE WEST LINE OF THE SOUTHEAST QUARTER OF SECTION 25, TOWNSHIP 12 SOUTH, RANGE 20 EAST, MOUNT DIABLO BASE AND MERIDIAN, WAS TAKEN TO BE N00°01'18" W AS SHOWN ON TRACT MAP NO. 4237, RECORDED IN VOLUME 58 OF PLATS, AT PAGES 89 & 90, OF FRESNO COUNTY RECORDS.

## LEGEND

- EXISTING MONUMENT FOUND AND ACCEPTED OR AS NOTED.
  - ⊙ SET 1" O.D. IRON PIPE, 30" LONG, UP 4", IN 6" DIA. x 30" CONCRETE MONUMENT DOWN 6" AND TAGGED RCE-19789, EXCEPT AS NOTED.
  - ( ) RECORD DATA PER GARFIELD PARK COLONY, RECORD OF SURVEY, BOOK 2 AT PAGE 66, FRESNO COUNTY RECORDS.
  - [ ] RECORD DATA PER TRACT NO. 4237, RECORDED IN VOLUME 58 OF PLATS, AT PAGES 89 & 90, FRESNO COUNTY RECORDS.
  - < > RECORD DATA PER TRACT NO. 4261, RECORDED IN VOLUME 58 OF PLATS, AT PAGES 56 & 57, FRESNO COUNTY RECORDS.
  - { } RECORD DATA PER DEED RECORDED ON JUNE 20, 1984, AS DOCUMENT NO. 840059200, O.R.F.C.
  - PUE. PUBLIC UTILITY EASEMENT NOW OFFERED FOR DEDICATION FOR PUBLIC USE.
  - LE. LANDSCAPE EASEMENT NOW OFFERED FOR DEDICATION FOR PUBLIC USE.
  - CALC. CALCULATED DISTANCE FROM RECORD DATA.
  - 10' FIDE PREVIOUSLY DEEDED TO FRESNO IRRIGATION DISTRICT FOR IRRIGATION PIPELINE PURPOSES PER DEED RECORDED 199, AS DOCUMENT NO. O.R.F.C.
  - ▲▲▲ INDICATES RELINQUISHMENT OF DIRECT ACCESS RIGHTS.
  - THE SHADED BLUE BORDER INDICATES THE LIMITS OF THIS SUBDIVISION.
  - △ INDICATES PORTIONS NOW OFFERED FOR DEDICATION FOR PUBLIC STREET PURPOSES.
  - ⊙ INDICATES PORTIONS PREVIOUSLY DEDICATED FOR PUBLIC STREET PURPOSES PER GARFIELD PARK COLONY, BOOK 2 OF RECORD OF SURVEYS AT PAGE 66, F.C.R.
  - \* INDICATES PORTIONS PREVIOUSLY DEDICATED FOR PUBLIC STREET PURPOSES PER PARCEL MAP NO. BOOK OF PARCEL MAPS AT PAGES AND F.C.R.
  - OUTLOT "A" IS FOR PRIVATE STREET, INGRESS AND EGRESS, PRIVATE LANDSCAPE, DRAINAGE AND PARKING PURPOSES. OUTLOT "A" NOW OFFERED FOR DEDICATION FOR PUBLIC UTILITY PURPOSES.
  - OUTLOT "B" IS FOR OPEN SPACE, ACCESS, PARKING, LANDSCAPING AND DRAINAGE AND UTILITIES.
- \* NOTE \*
- 1" O.D. x 30" LONG IRON PIPE TO BE SET 6" DOWN AND TAGGED RCE-19789, AT ALL LOT CORNERS, ANGLE POINTS, BEGINNING OF CURVES AND END OF CURVES, OR AS NOTED WITHIN THE TIME SPECIFIED IN THE SUBDIVISION AGREEMENT FOR THIS TRACT.

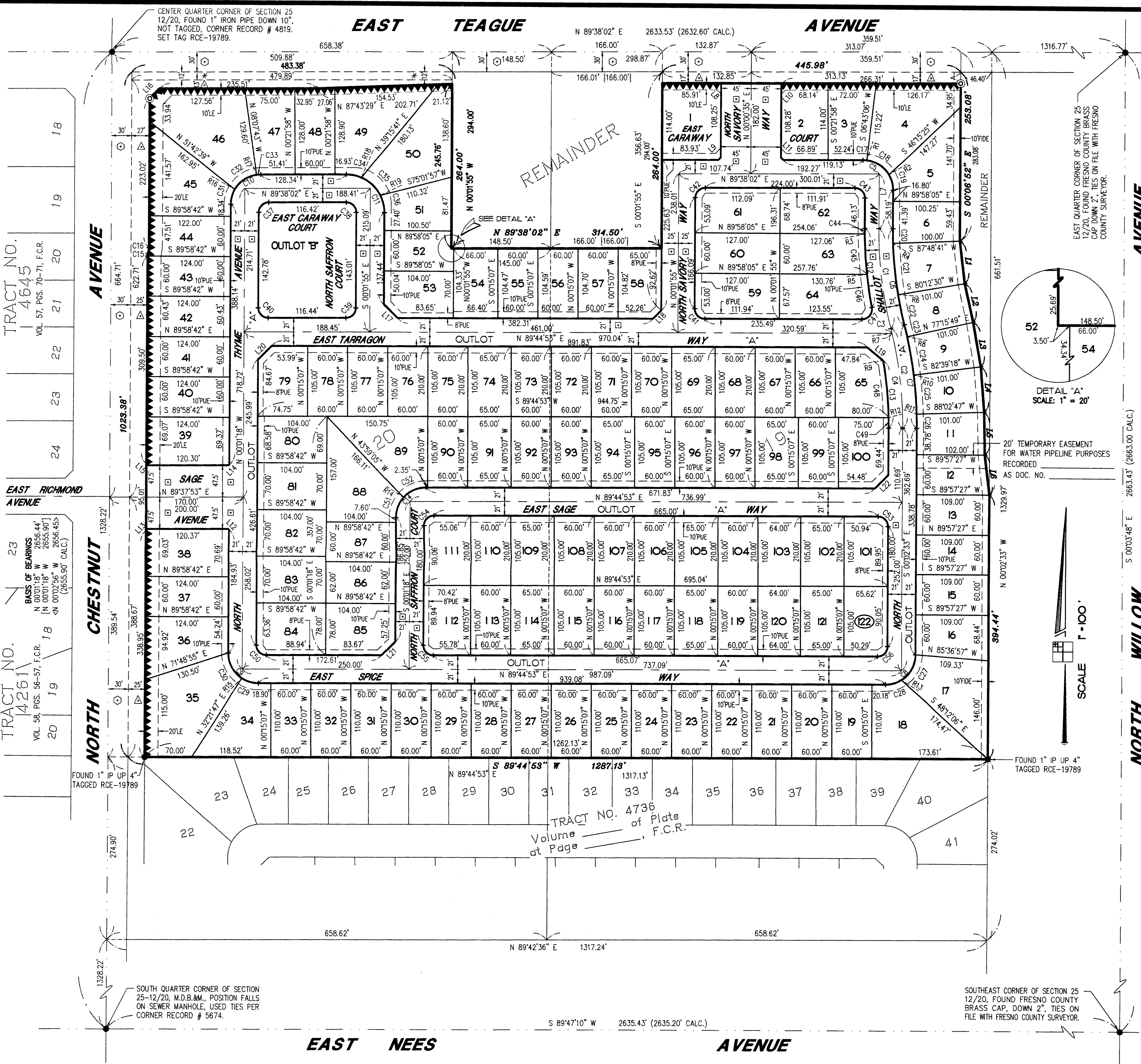


20' TEMPORARY EASEMENT FOR WATER PIPELINE PURPOSES RECORDED AS DOC. NO.



CURVE	RADIUS	LENGTH	CHORD	DELTA
C1	600.00'	150.34'	149.95'	142°12'23"
C2	600.00'	150.23'	149.84'	142°04'46"
C3	600.00'	7.64'	7.64'	0°43'48"
C4	600.00'	142.59'	142.25'	133°58'58"
C5	45.00'	70.95'	63.82'	90°20'03"
C6	579.00'	145.08'	144.70'	142°12'23"
C7	621.00'	155.49'	155.08'	142°04'46"
C8	45.00'	70.52'	63.52'	89°47'26"
C9	45.00'	70.87'	63.77'	90°13'40"
C10	45.00'	70.42'	63.45'	89°39'20"
C11	57.00'	89.87'	80.84'	90°20'03"
C12	621.00'	118.24'	118.06'	105°43'32"
C13	579.00'	101.00'	100.87'	09°59'41"
C14	45.00'	70.50'	63.51'	89°46'11"
C15	10.00'	3.18'	3.16'	181°14'2"
C16	30.00'	9.53'	9.49'	181°14'2"
C17	45.00'	5.56'	5.56'	07°05'03"
C18	45.00'	41.09'	39.68'	52°18'59"
C19	45.00'	24.30'	24.00'	30°56'01"
C20	579.00'	21.80'	21.80'	02°09'26"
C21	579.00'	76.83'	76.77'	07°36'09"
C22	579.00'	46.45'	46.44'	04°35'48"
C23	621.00'	17.91'	17.91'	01°39'08"
C24	621.00'	58.43'	58.41'	05°23'29"
C25	621.00'	58.44'	58.41'	05°23'29"
C26	621.00'	20.71'	20.71'	01°54'40"
C27	45.00'	45.35'	43.46'	57°44'29"
C28	45.00'	25.17'	24.84'	32°02'57"
C29	45.00'	25.99'	25.63'	33°05'14"
C30	45.00'	44.88'	43.04'	57°08'35"
C31	45.00'	23.23'	22.97'	29°34'38"
C32	45.00'	41.09'	39.68'	52°18'54"
C33	45.00'	6.10'	6.09'	07°45'48"
C34	57.00'	23.27'	23.11'	23°23'28"
C35	57.00'	40.00'	39.18'	40°12'27"
C36	57.00'	26.60'	26.38'	26°44'08"
C37	15.00'	23.47'	21.15'	89°39'20"
C38	15.00'	23.65'	21.27'	90°20'03"
C39	15.00'	23.50'	21.17'	89°46'11"
C40	15.00'	23.62'	21.26'	90°13'49"
C41	15.00'	23.62'	21.25'	90°13'12"
C42	15.00'	23.47'	21.15'	89°39'57"
C43	15.00'	23.65'	21.27'	90°20'03"
C44	621.00'	8.27'	8.27'	00°45'46"
C45	621.00'	60.14'	60.11'	05°32'55"
C46	621.00'	49.83'	49.82'	04°35'51"
C47	15.00'	26.36'	23.10'	100°41'20"
C48	579.00'	85.77'	85.69'	08°29'14"
C49	579.00'	15.23'	15.23'	01°30'27"
C50	15.00'	23.62'	21.26'	90°13'49"
C51	45.00'	32.62'	31.91'	41°31'59"
C52	45.00'	37.88'	36.78'	48°14'12"
C53	15.00'	23.62'	21.25'	90°12'34"
C54	15.00'	23.50'	21.17'	89°46'11"
C55	15.00'	23.62'	21.26'	90°13'49"
C56	15.00'	23.51'	21.17'	89°47'26"

NO.	DATE	DESCRIPTION
1	9/25/97-BJM	# 7
2	10/08/97-DH	# 1
3	2/10/98-BJM	# 7
4	5/18/98-BJM	# 7



TRACT NO. 4645  
VOL. 57, PGS. 70-71, F.C.R.

TRACT NO. 4261  
VOL. 58, PGS. 56-57, F.C.R.

TRACT NO. 4261  
VOL. 58, PGS. 56-57, F.C.R.

SOUTH QUARTER CORNER OF SECTION 25-12/20, M.D.B.&M., POSITION FALLS ON SEWER MANHOLE, USED TIES PER CORNER RECORD # 5674.

SOUTHEAST CORNER OF SECTION 25 12/20, FOUND FRESNO COUNTY BRASS CAP, DOWN 2", TIES ON FILE WITH FRESNO COUNTY SURVEYOR.

TRACT NO. 4736  
Volume of Plats  
at Page F.C.R.