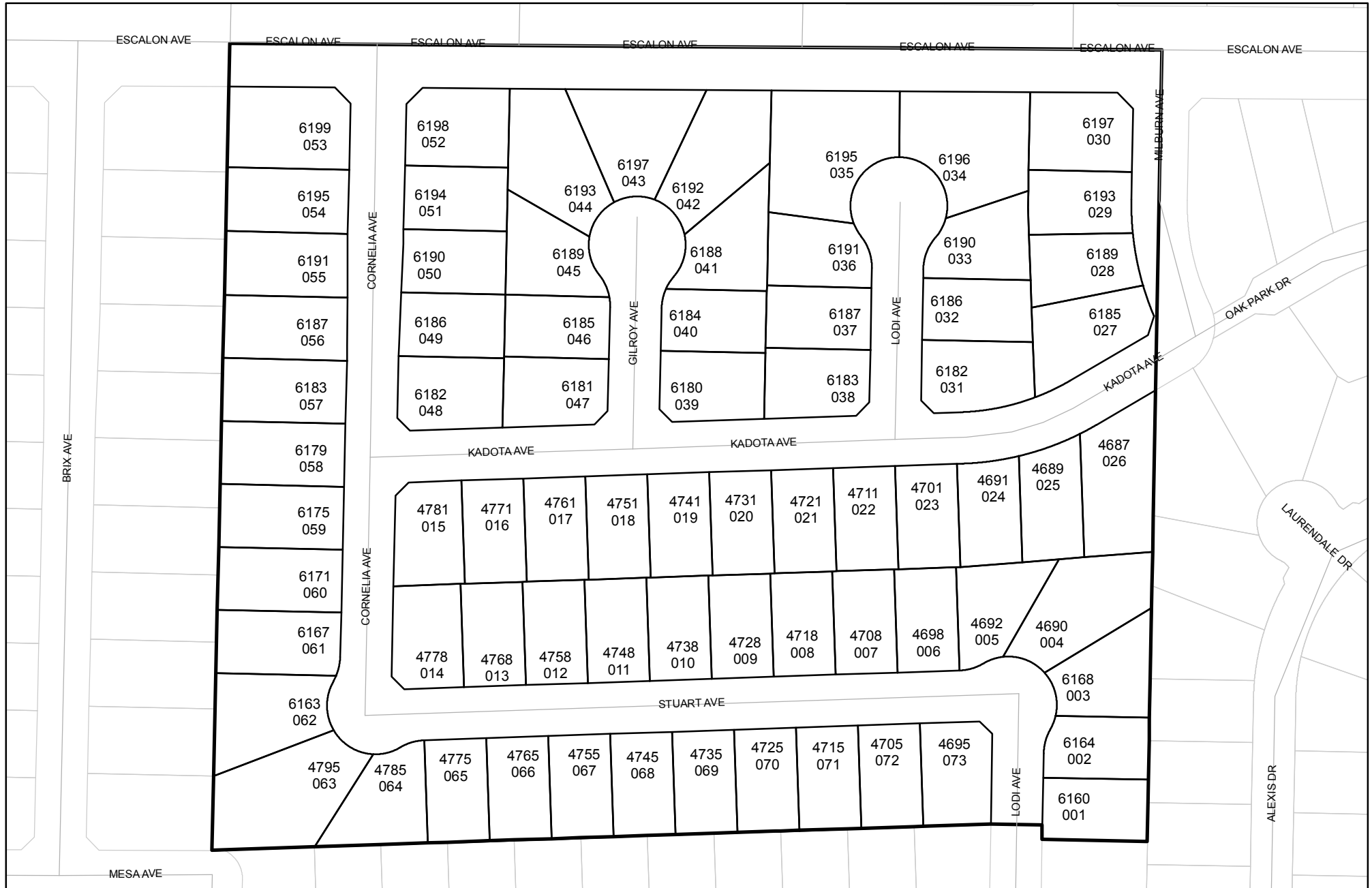




Street Names, Addresses and (Lot Numbers) for T4821

Prepared on Thu Oct 18 01:06:22 2018



TRACT NO. 4821

PHASE II OF TENTATIVE TRACT NO. 4346

SHEET TWO OF TWO SHEETS

IN THE CITY OF FRESNO, COUNTY OF FRESNO, STATE OF CALIFORNIA

SURVEYED AND PLATTED IN APRIL 1996, BY GARY GIANNETTA

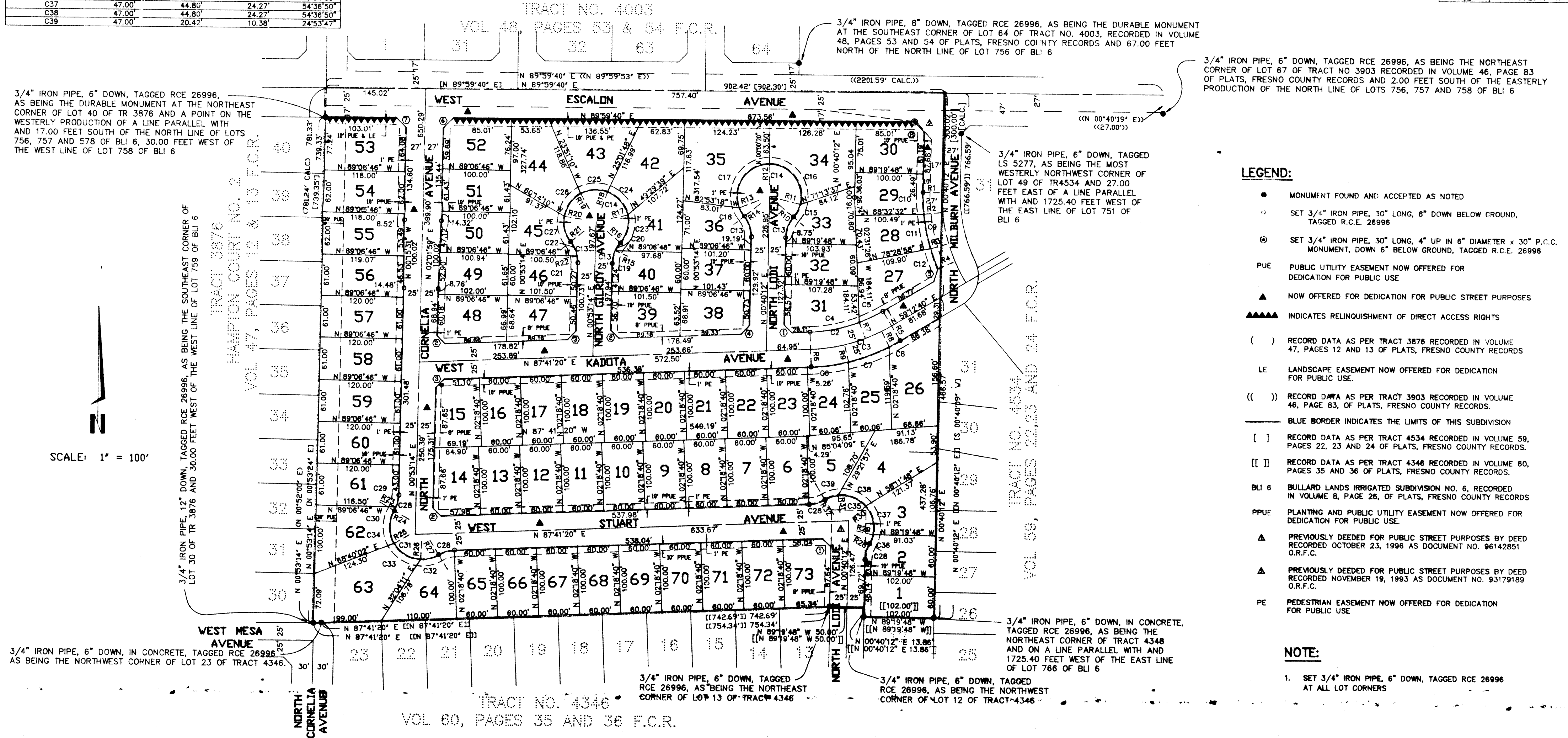
CURVE	RADIUS	LENGTH	TANGENT	DELTA
C1	250.00'	124.26'	63.44'	28°28'40"
C2	225.00'	111.83'	57.10'	28°28'40"
C3	275.00'	136.68'	69.78'	28°28'40"
C4	225.00'	111.83'	57.10'	18°46'33"
C5	225.00'	111.83'	57.10'	09°42'07"
C6	275.00'	136.68'	69.78'	1°28'58"
C7	275.00'	136.68'	69.78'	13°10'43"
C8	275.00'	136.68'	69.78'	03°48'59"
C9	277.00'	115.73'	58.73'	23°56'32"
C10	277.00'	115.73'	58.73'	06°44'21"
C11	277.00'	115.73'	58.73'	10°46'29"
C12	277.00'	115.73'	58.73'	06°25'42"
C13	48.00'	33.33'	17.37'	39°47'16"
C14	47.00'	212.93'	109.33'	259°34'32"
C15	47.00'	21.48'	10.93'	26°10'52"
C16	47.00'	85.51'	43.42'	104°4'21"
C17	47.00'	85.51'	43.42'	117°48'43"
C18	47.00'	14.25'	7.18'	17°22'36"
C19	48.00'	19.27'	9.77'	23°00'14"
C20	48.00'	14.06'	7.08'	16°47'02"
C21	48.00'	9.80'	4.92'	11°41'54"
C22	48.00'	23.53'	12.01'	28°05'22"
C23	47.00'	43.75'	23.60'	53°20'04"
C24	47.00'	46.57'	25.39'	56°45'59"
C25	47.00'	40.31'	21.49'	49°08'17"
C26	47.00'	42.73'	22.97'	52°05'18"
C27	47.00'	39.58'	21.05'	48°14'54"
C28	48.00'	24.39'	12.46'	29°06'37"
C29	48.00'	18.45'	9.34'	22°01'28"
C30	48.00'	5.94'	2.97'	07°05'09"
C31	47.00'	124.21'	64.52'	151°25'08"
C32	47.00'	27.37'	13.68'	33°21'37"
C33	47.00'	46.86'	25.59'	57°07'35"
C34	47.00'	49.98'	27.59'	60°53'58"
C35	47.00'	124.03'	63.06'	151°12'06"
C36	47.00'	14.01'	7.06'	17°04'39"
C37	47.00'	44.80'	24.27'	54°36'50"
C38	47.00'	44.80'	24.27'	54°36'50"
C39	47.00'	20.42'	10.38'	24°53'47"

LINE	DIRECTION
R1	N 89°19'48" W
R2	S 83°55'51" W
R3	S 73°09'22" W
R4	S 66°43'40" W
R5	S 30°47'20" E
R6	S 02°18'40" E
R7	S 21°05'13" E
R8	S 26°58'21" E
R9	S 13°47'38" E
R10	S 49°32'32" E
R11	S 75°43'24" E
R12	N 00°02'15" E
R13	S 68°15'32" W
R14	S 50°52'58" W
R15	N 66°06'32" W
R16	S 49°19'30" E
R17	N 77°20'28" E
R18	N 20°34'27" E
R19	N 28°33'50" W
R20	N 80°39'08" W
R21	S 51°05'58" W
R22	N 79°11'20" E
R23	S 67°05'18" E
R24	N 60°00'09" W
R25	S 58°03'50" W
R26	S 01°56'20" W
R27	S 31°25'17" E
R28	N 60°13'11" W
R29	N 77°17'50" E
R30	N 48°05'20" E
R31	N 06°31'30" W
R32	N 31°25'17" W

BASIS OF BEARINGS :

THE CENTERLINE OF WEST ESCALON AVENUE TAKEN AS BEARING NORTH 89°59'40" EAST AS PER MAP OF TRACT 4534, RECORDED IN VOLUME 46, PAGES 22, 23 AND 24 OF PLATS, FRESNO COUNTY RECORDS.

LINE DATA	BEARING	LENGTH
1	N 45°49'14" W	17.21'
2	N 45°42'43" W	17.18'
3	N 44°16'55" E	18.16'
4	N 44°10'46" E	18.13'
5	N 17°13'51" E	19.44'
6	N 45°26'27" E	21.38'
7	N 44°33'33" W	21.05'
8	N 44°40'04" W	21.09'



- #### LEGEND:
- MONUMENT FOUND AND ACCEPTED AS NOTED
 - SET 3/4" IRON PIPE, 30" LONG, 6" DOWN BELOW GROUND, TAGGED R.C.E. 26996
 - ⊙ SET 3/4" IRON PIPE, 30" LONG, 4" UP IN 6" DIAMETER x 30" P.C.C. MONUMENT, DOWN 6" BELOW GROUND, TAGGED R.C.E. 26996
 - PUE PUBLIC UTILITY EASEMENT NOW OFFERED FOR DEDICATION FOR PUBLIC USE
 - ▲ NOW OFFERED FOR DEDICATION FOR PUBLIC STREET PURPOSES
 - ▲▲▲▲ INDICATES RELINQUISHMENT OF DIRECT ACCESS RIGHTS
 - () RECORD DATA AS PER TRACT 3876 RECORDED IN VOLUME 47, PAGES 12 AND 13 OF PLATS, FRESNO COUNTY RECORDS
 - LE LANDSCAPE EASEMENT NOW OFFERED FOR DEDICATION FOR PUBLIC USE
 - (()) RECORD DATA AS PER TRACT 3903 RECORDED IN VOLUME 46, PAGE 83, OF PLATS, FRESNO COUNTY RECORDS.
 - [] BLUE BORDER INDICATES THE LIMITS OF THIS SUBDIVISION
 - [] RECORD DATA AS PER TRACT 4534 RECORDED IN VOLUME 59, PAGES 22, 23 AND 24 OF PLATS, FRESNO COUNTY RECORDS.
 - [] RECORD DATA AS PER TRACT 4346 RECORDED IN VOLUME 60, PAGES 35 AND 36 OF PLATS, FRESNO COUNTY RECORDS.
 - BLI 6 BULLARD LANDS IRRIGATED SUBDIVISION NO. 6, RECORDED IN VOLUME 8, PAGE 26, OF PLATS, FRESNO COUNTY RECORDS
 - PPUE PLANTING AND PUBLIC UTILITY EASEMENT NOW OFFERED FOR DEDICATION FOR PUBLIC USE.
 - ▲ PREVIOUSLY DEEDED FOR PUBLIC STREET PURPOSES BY DEED RECORDED OCTOBER 23, 1996 AS DOCUMENT NO. 96142851 O.R.F.C.
 - ▲ PREVIOUSLY DEEDED FOR PUBLIC STREET PURPOSES BY DEED RECORDED NOVEMBER 19, 1993 AS DOCUMENT NO. 93179189 O.R.F.C.
 - PE PEDESTRIAN EASEMENT NOW OFFERED FOR DEDICATION FOR PUBLIC USE

- #### NOTE:
- SET 3/4" IRON PIPE, 6" DOWN, TAGGED RCE 26996 AT ALL LOT CORNERS

SCALE: 1" = 100'