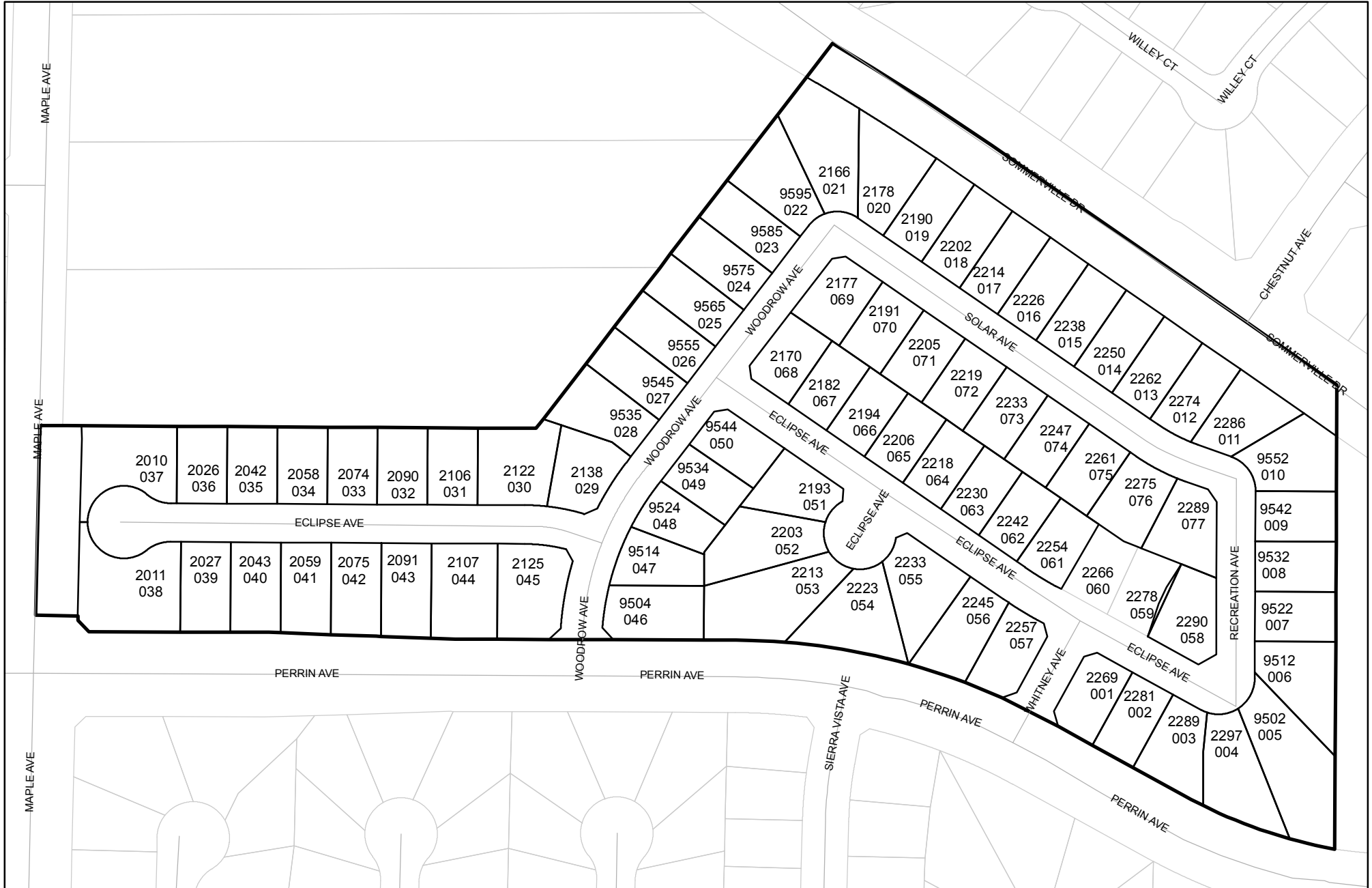




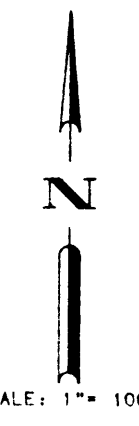
Prepared on Thu Feb 14 22:41:10 2019

Street Names, Addresses and (Lot Numbers) for T4805



TRACT NO. 4805

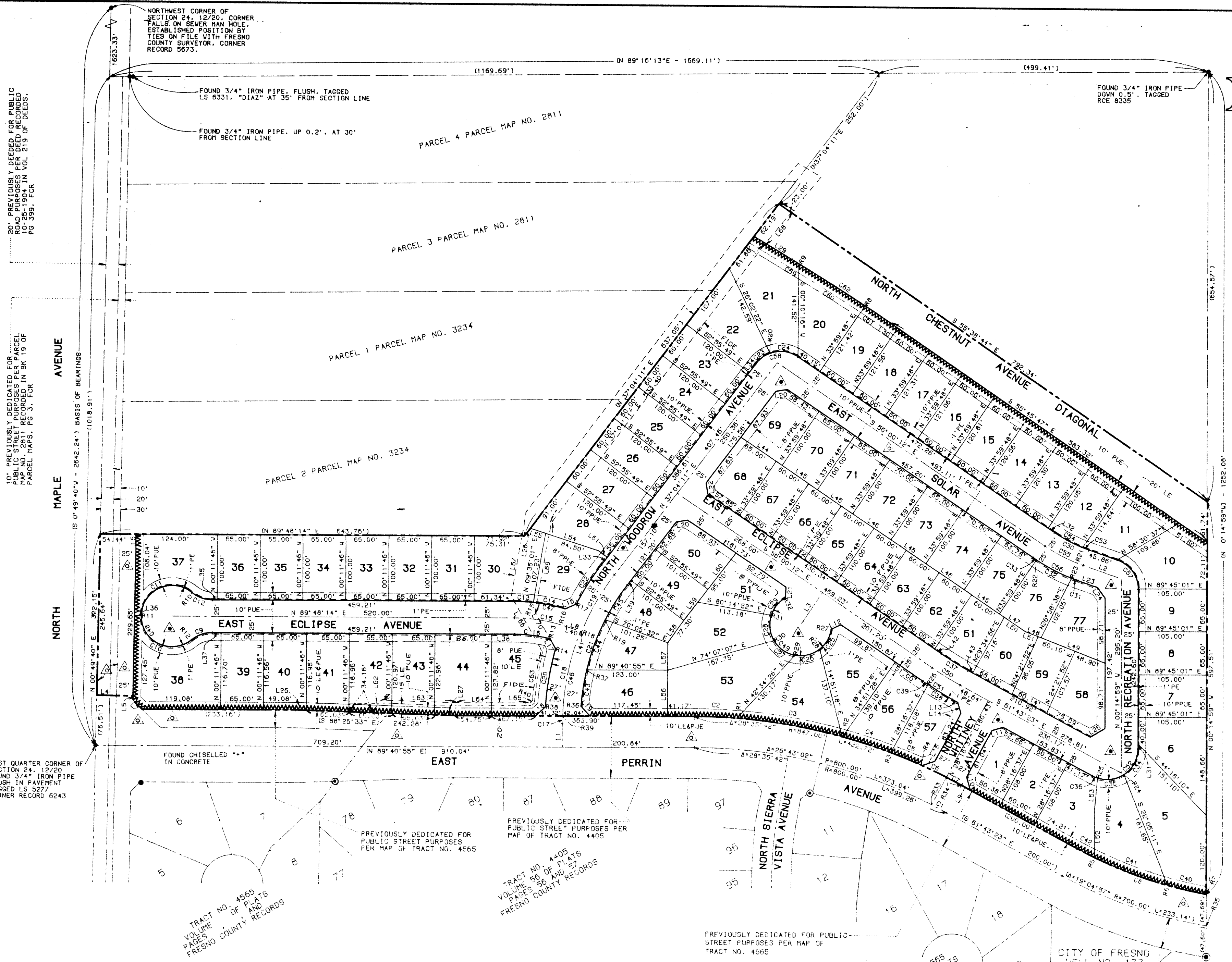
PHASE II OF TENTATIVE TRACT NO. 4565
 IN THE CITY OF FRESNO
 FRESNO COUNTY, CALIFORNIA
 SURVEYED AND PLATTED
 IN DECEMBER, 1996
 BY HANNA & HANNA, INC.
 CONSISTING OF 3 SHEETS
 SHEET 2 OF 3



BASIS OF BEARINGS
 THE WEST LINE OF THE NORTHWEST QUARTER OF SECTION 24, 12/20 WAS TAKEN TO BE SOUTH 00°49'40" WEST, AS SHOWN ON PARCEL MAP NO. 2811, ACCORDING TO THE MAP THEREOF RECORDED IN BOOK 19 OF PARCEL MAPS AT PAGE 3, FRESNO COUNTY RECORDS.

- LEGEND**
- FOUND MONUMENT AS NOTED
 - ⊙ FOUND 3/4" IRON PIPE DOWN 0.5' UP 4" IN CONCRETE, UNLESS OTHERWISE NOTED
 - ⊙ SET 3/4"x30" IRON PIPE UP 4" IN PCC MONUMENT DOWN 6" TAGGED LS 5277, UNLESS OTHERWISE NOTED
 - ▲▲▲▲ INDICATES RELINQUISHMENT OF DIRECT ACCESS RIGHTS
 - △ INDICATES PREVIOUSLY DEEDED OR DEDICATED FOR PUBLIC STREET PURPOSES, AS NOTED
 - △ INDICATES NOW OFFERED FOR DEDICATION FOR PUBLIC STREET PURPOSES
 - PE INDICATES PEDESTRIAN EASEMENT NOW OFFERED FOR DEDICATION FOR PUBLIC USE
 - PUE INDICATES PUBLIC UTILITY EASEMENT NOW OFFERED FOR DEDICATION FOR PUBLIC USE
 - PPUE INDICATES PLANTING AND PUBLIC UTILITY EASEMENT NOW OFFERED FOR DEDICATION FOR PUBLIC USE
 - LE INDICATES LANDSCAPE EASEMENT NOW OFFERED FOR DEDICATION FOR PUBLIC USE
 - FIDE INDICATES PIPELINE EASEMENT GRANTED TO FRESNO IRRIGATION DISTRICT PER INSTRUMENT RECORDED 1-16-1997 AS DOC NO. 37006800, ORFC
 - INDICATES RECORD DATA PER MAP OF TRACT NO. 4565 RECORDED IN VOL. _____ OF PLATS, PGS. _____, FCR, AND MEASURED PER THIS MAP
 - BLUE BORDER INDICATES THE LIMITS OF THIS SUBDIVISION

NOTE:
 SET 3/4"x30" IRON PIPE DOWN 0.5' TAGGED LS 5277, OR WILL BE SET WITHIN ONE YEAR OR ANY APPROVED EXTENSION THEREOF, FOR ALL LOT CORNERS, BLOCK CORNERS, AND BEGINNING AND END OF ALL CURVES.



20' PREVIOUSLY DEEDED FOR PUBLIC ROAD PURPOSES PER DEED RECORDED 10-25-1904 IN VOL 219 OF DEEDS, PG 399, FCR

10' PREVIOUSLY DEDICATED FOR PUBLIC STREET PURPOSES PER PARCEL MAP NO. 2811 RECORDED IN BK 19 OF PARCEL MAPS, PG 3, FCR

NORTHWEST CORNER OF SECTION 24, 12/20, CORNER FALLS ON SEWER MAN HOLE. ESTABLISHED POSITION BY TIES ON FILE WITH FRESNO COUNTY SURVEYOR, CORNER RECORD 5673.

FOUND 3/4" IRON PIPE, FLUSH, TAGGED LS 6331, "DIAZ" AT 35' FROM SECTION LINE

FOUND 3/4" IRON PIPE, UP 0.2', AT 30' FROM SECTION LINE

FOUND 3/4" IRON PIPE DOWN 0.5', TAGGED RCE 8335

WEST QUARTER CORNER OF SECTION 24, 12/20 FOUND 3/4" IRON PIPE FLUSH IN PAVEMENT TAGGED LS 5277 CORNER RECORD 6243

FOUND CHISELLED "X" IN CONCRETE

PREVIOUSLY DEDICATED FOR PUBLIC STREET PURPOSES PER MAP OF TRACT NO. 4565

PREVIOUSLY DEDICATED FOR PUBLIC STREET PURPOSES PER MAP OF TRACT NO. 4405

TRACT NO. 4565
 VOLUME _____ OF PLATS
 PAGES _____ AND _____
 FRESNO COUNTY RECORDS

TRACT NO. 4405
 VOLUME 56 OF PLATS
 PAGES 56 AND 57
 FRESNO COUNTY RECORDS

PREVIOUSLY DEDICATED FOR PUBLIC STREET PURPOSES PER MAP OF TRACT NO. 4565

TRACT NO. 4565
 VOLUME _____ OF PLATS
 PAGES _____ AND _____
 FRESNO COUNTY RECORDS

PREVIOUSLY DEEDED FOR PUBLIC UTILITY PURPOSES PER INSTRUMENT RECORDED 7-16-1993 AS DOC NO. 93106631, ORFC

HANNA & HANNA, INC.
 ENGINEERS, SURVEYORS & PLANNERS
 1707 N. FRESNO STREET
 FRESNO, CA. 93703
 PH. (209) 445-1061