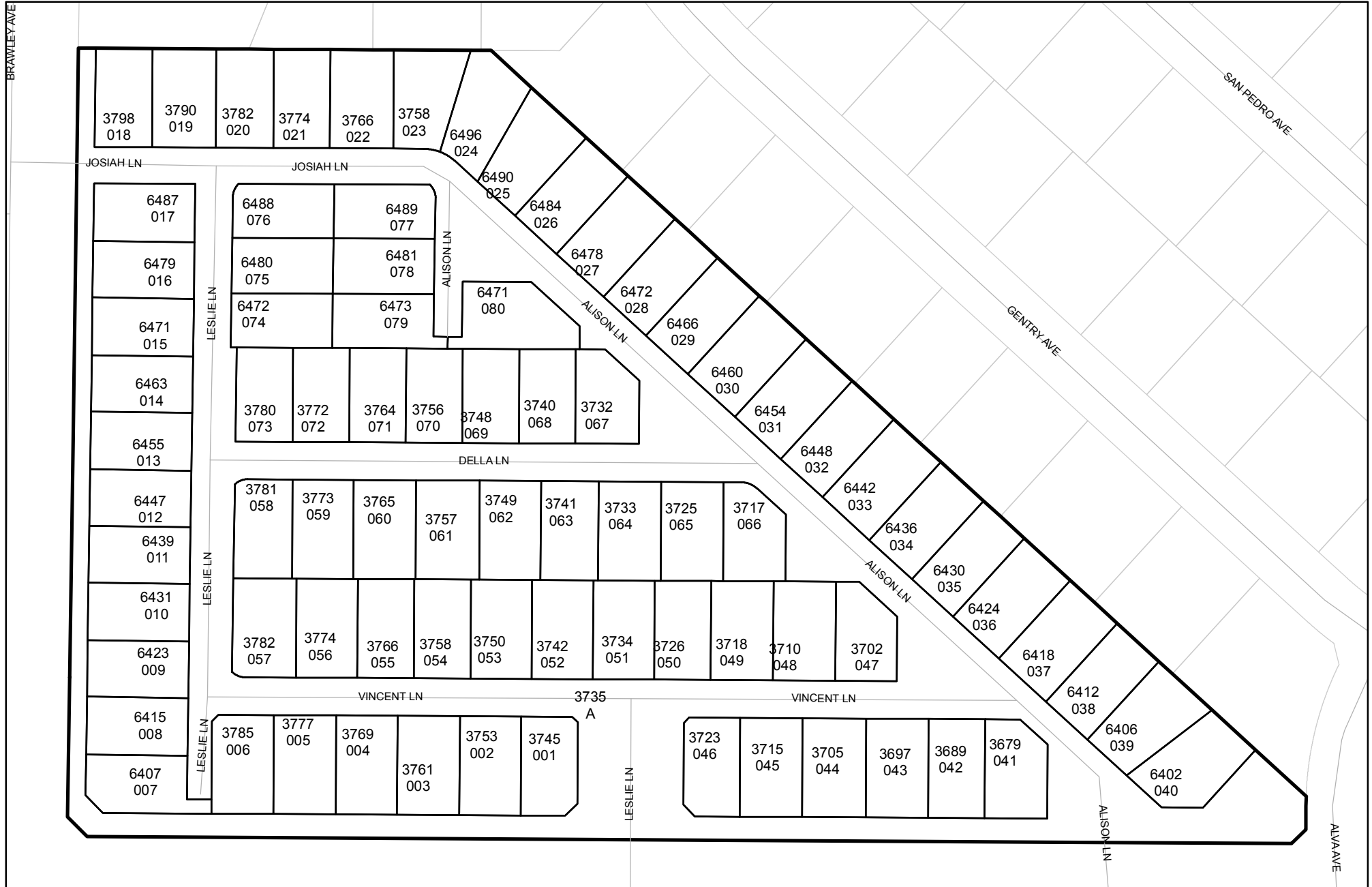




Street Names, Addresses and (Lot Numbers) for T4798

Prepared on Thu Oct 18 01:08:06 2018



MAP OF TRACT NO. 4798

A PLANNED DEVELOPMENT
IN THE CITY OF FRESNO
FRESNO COUNTY, CALIFORNIA
SURVEYED AND PLATTED IN APRIL, 1996
BY EDWARD D. DUNKEL AND ASSOCIATES

CONSISTING OF TWO SHEETS
SHEET 2 OF 2 SHEETS

BASIS OF BEARINGS

THE WEST LINE OF THE NORTHWEST QUARTER OF SECTION 1, TOWNSHIP 13 SOUTH, RANGE 13 EAST, MOUNT DIABLO BASE AND MERIDIAN (ALSO BEING THE CENTERLINE OF NORTH BRAWLEY AVENUE) IS TAKEN TO BE NORTH 00°24'03" EAST AS SHOWN ON TRACT NO. 3729, MANSIONETTE ESTATES NO. 18, VOLUME 50 OF PLATS AT PAGES 82, 83 & 84, FRESNO COUNTY RECORDS.

LEGEND

- EXISTING MONUMENT FOUND AND ACCEPTED OR AS NOTED.
 - SET 1" O.D. IRON PIPE, DOWN 6" AND TAGGED RCE-19789, EXCEPT AS NOTED.
 - ⊙ SET 1" O.D. IRON PIPE, 30" LONG, UP 4", IN 6" DIA. x 30" CONCRETE MONUMENT DOWN 6" AND TAGGED RCE-19789, EXCEPT AS NOTED.
 - () RECORD DATA PER TRACT NO. 3729 RECORDED IN VOLUME 50 OF PLATS AT PAGES 82, 83 & 84, FRESNO COUNTY RECORDS.
 - [] RECORD DATA PER TRACT NO. 4138, RECORDED IN VOLUME 51 OF PLATS AT PAGES 99 THROUGH 103, FRESNO COUNTY RECORDS.
 - { } RECORD DATA PER TRACT NO. 3457 RECORDED IN VOLUME 43 OF PLAT AT PAGE 84, FRESNO COUNTY RECORDS.
 - P.U.E. PUBLIC UTILITY EASEMENT NOW OFFERED FOR DEDICATION FOR PUBLIC USE.
 - T.F. TIE ON FILE PER FRESNO COUNTY SURVEYOR.
 - B.L.I. BULLARD LANDS IRRIGATED SUBDIVISION
 - ▲▲▲ INDICATES RELINQUISHMENT OF DIRECT VEHICULAR ACCESS RIGHTS.
 - △ INDICATES PORTIONS NOW OFFERED FOR DEDICATION FOR PUBLIC STREET PURPOSES.
 - BLUE BORDER INDICATES THE LIMITS OF THIS SUBDIVISION.
- * NOTE *
- 1" O.D. x 30" LONG IRON PIPE TO BE SET 6" DOWN AND TAGGED RCE-19789, AT ALL LOT CORNERS, ANGLE POINTS, BEGINNING OF CURVES AND END OF CURVES, OR AS NOTED WITHIN THE TIME SPECIFIED IN THE SUBDIVISION AGREEMENT FOR THIS TRACT.
- OUTLOT "A" IS FOR PRIVATE STREET, AND PRIVATE LANDSCAPE PURPOSES, AND OFFER THE OUTLOT AREA FOR DEDICATION FOR PUBLIC PURPOSES.

RADIAL TABLE

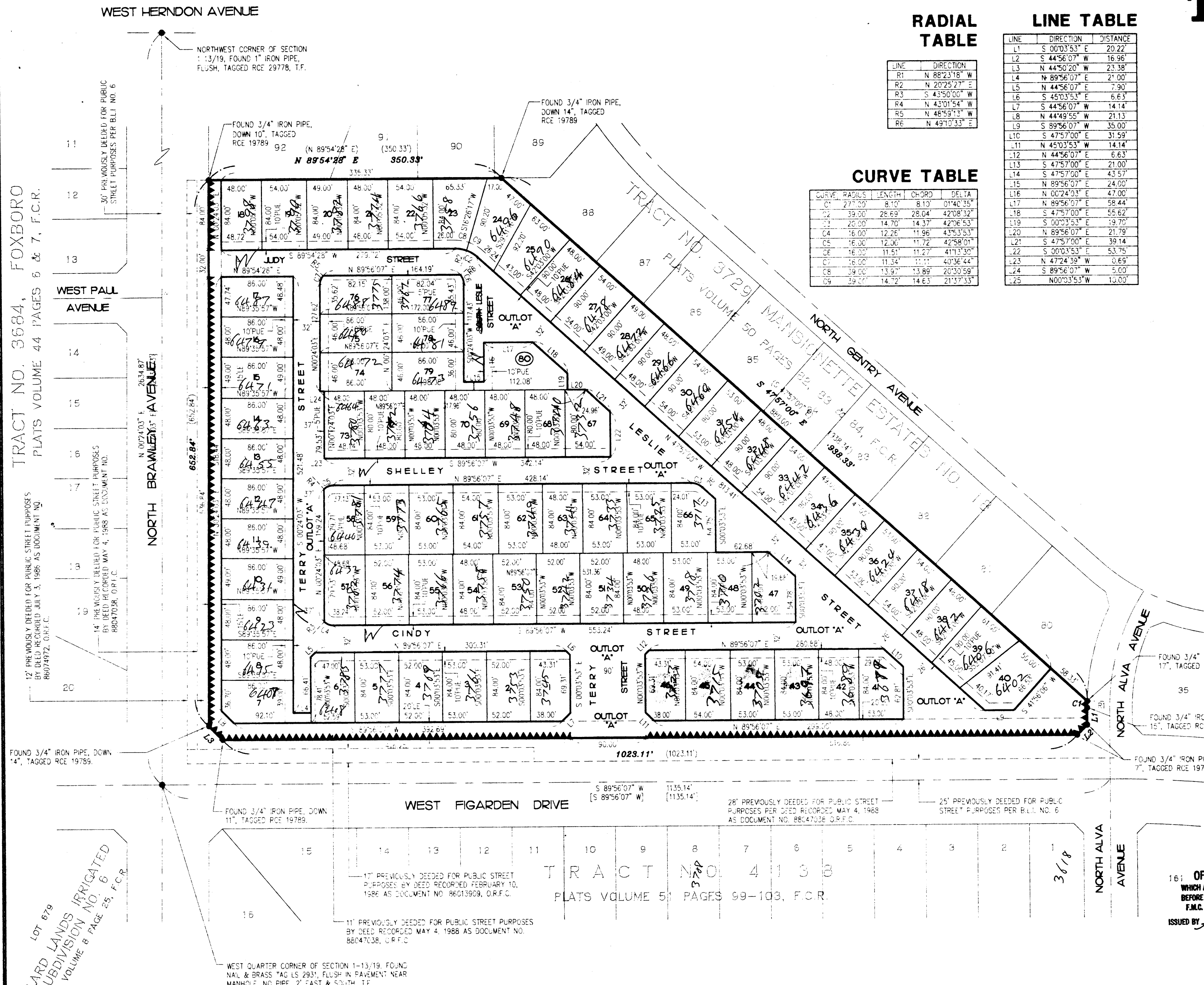
LINE	DIRECTION
R1	N 88°23'18" W
R2	N 20°25'27" E
R3	S 43°50'00" W
R4	N 43°01'54" W
R5	N 48°59'13" W
R6	N 49°10'33" E

LINE TABLE

LINE	DIRECTION	DISTANCE
L1	S 00°03'53" E	20.22'
L2	S 44°56'07" W	16.96'
L3	N 44°50'20" W	23.38'
L4	N 89°56'07" E	21.00'
L5	N 44°56'07" E	7.90'
L6	S 45°03'53" E	6.63'
L7	S 44°56'07" W	14.14'
L8	N 44°49'55" W	21.13'
L9	S 89°56'07" W	35.00'
L10	S 47°57'00" E	31.59'
L11	N 45°03'53" W	14.14'
L12	N 44°56'07" E	6.63'
L13	S 47°57'00" E	21.00'
L14	S 47°57'00" E	43.57'
L15	N 89°56'07" E	24.00'
L16	N 00°24'03" E	47.00'
L17	N 89°56'07" E	58.44'
L18	S 47°57'00" E	55.62'
L19	S 00°23'53" E	19.70'
L20	N 89°56'07" E	21.79'
L21	S 47°57'00" E	39.14'
L22	S 00°03'53" E	53.75'
L23	S 16°00' 11.34" 11.11" 40°36'44"	0.69'
L24	S 89°56'07" W	5.00'
L25	N 00°03'53" W	10.00'

CURVE TABLE

CURVE	RADIUS	LENGTH	CHORD	DELTA
C1	277.30'	8.10'	8.10'	01°40'35"
C2	39.00'	28.69'	28.04'	42°08'32"
C3	20.00'	14.70'	14.37'	42°06'53"
C4	16.00'	12.26'	11.96'	43°33'53"
C5	16.00'	12.00'	11.72'	42°58'01"
C6	16.00'	11.51'	11.27'	41°13'30"
C7	16.00'	11.34'	11.11'	40°36'44"
C8	39.00'	13.97'	13.89'	20°30'59"
C9	39.00'	14.72'	14.63'	21°37'33"



16: OFFICIAL ADDRESS NUMBERS
WHICH APPEARS ON THIS PAGE MUST BE INSTALLED
BEFORE FINAL INSPECTION AS PER SECTION 12-1304
F.M.C. (MINIMUM SIZE 5" HIGH WITH 1/4" STROKE)
ISSUED BY *Edward Dunkel* DATE *9/20/96*

REVISIONS
07/22/96-CY = 6
09/06/96-CY = 6
09/17/96-CH = 1