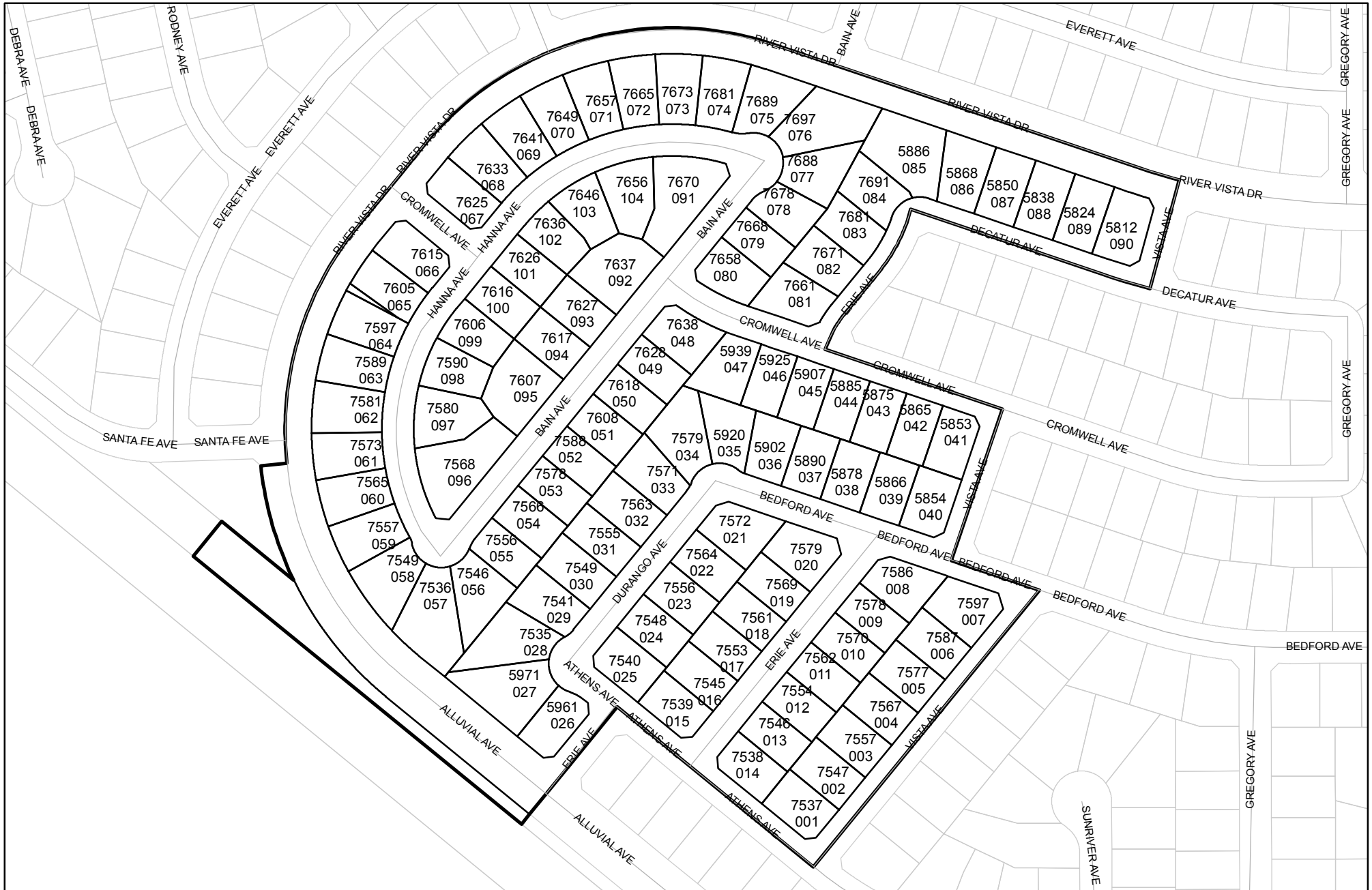




Prepared on Thu Feb 14 22:42:13 2019

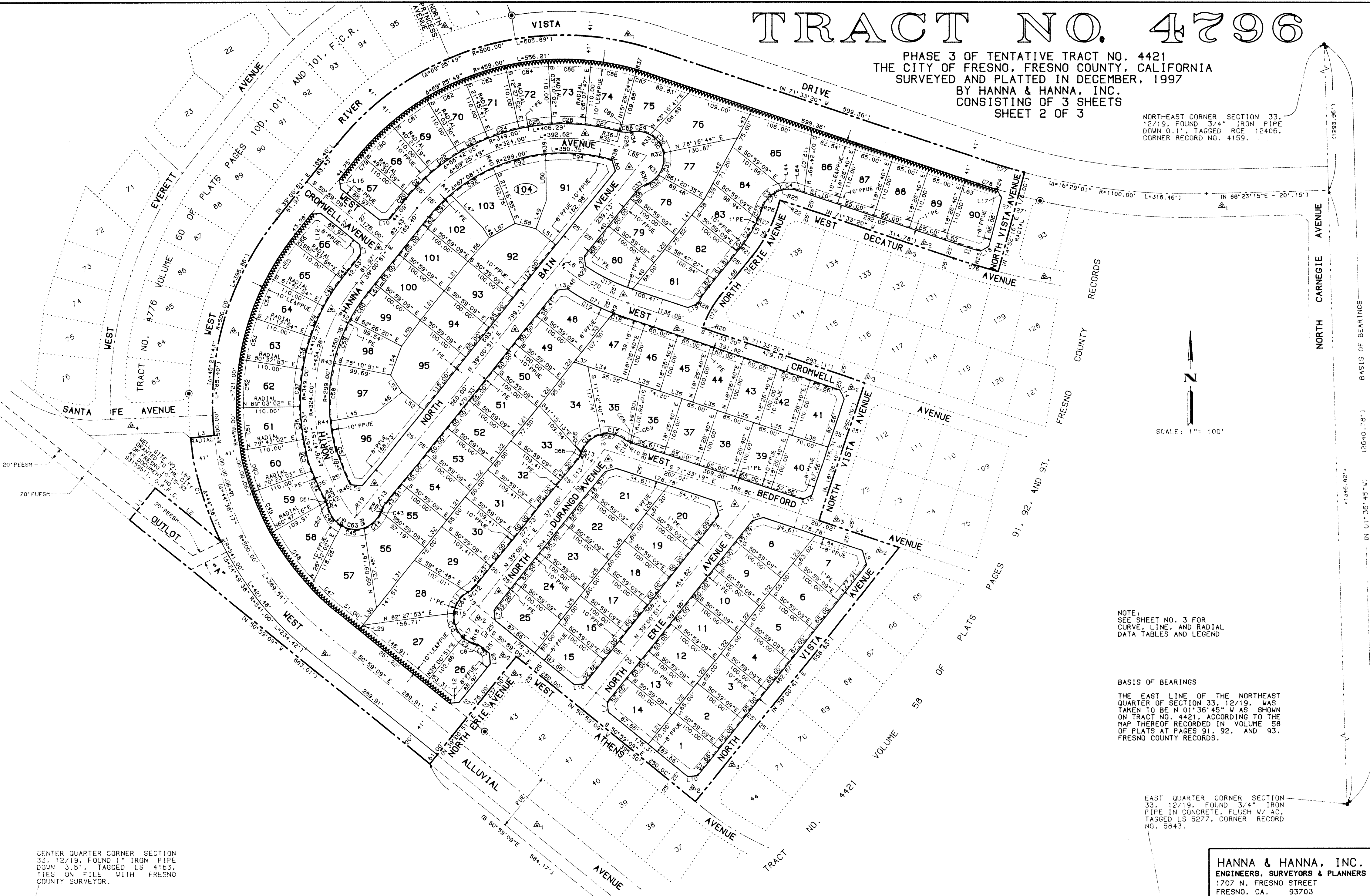
Street Names, Addresses and (Lot Numbers) for T4796



TRACT NO. 4796

PHASE 3 OF TENTATIVE TRACT NO. 4421
THE CITY OF FRESNO, FRESNO COUNTY, CALIFORNIA
SURVEYED AND PLATTED IN DECEMBER, 1997
BY HANNA & HANNA, INC.
CONSISTING OF 3 SHEETS
SHEET 2 OF 3

NORTHEAST CORNER SECTION 33,
12/19, FOUND 3/4" IRON PIPE
DOWN 0.1', TAGGED RCE 12406,
CORNER RECORD NO. 4159.



CENTER QUARTER CORNER SECTION
33, 12/19, FOUND 1" IRON PIPE
DOWN 3.5', TAGGED LS 4163,
TIES ON FILE WITH FRESNO
COUNTY SURVEYOR.

NOTE:
SEE SHEET NO. 3 FOR
CURVE, LINE, AND RADIAL
DATA TABLES AND LEGEND

BASIS OF BEARINGS
THE EAST LINE OF THE NORTHEAST
QUARTER OF SECTION 33, 12/19, WAS
TAKEN TO BE N 01°36'45" W AS SHOWN
ON TRACT NO. 4421, ACCORDING TO
THE MAP THEREOF RECORDED IN
VOLUME 58 OF PLATS AT PAGES 91, 92, AND 93,
FRESNO COUNTY RECORDS.

EAST QUARTER CORNER SECTION
33, 12/19, FOUND 3/4" IRON
PIPE IN CONCRETE, FLUSH W/ AC,
TAGGED LS 5277, CORNER RECORD
NO. 5843.

HANNA & HANNA, INC.
ENGINEERS, SURVEYORS & PLANNERS
1707 N. FRESNO STREET
FRESNO, CA. 93703
PH. (209) 445-1061