



Street Names, Addresses and (Lot Numbers) for T4788

Prepared on Thu Feb 14 22:42:35 2019



500'40"16" W 2646'93"
 NORTH CHESTNUT AVENUE

ENTERPRISE
 125'40" W
 182'40" W

PREVIOUSLY DEDICATED FOR CANAL PURPOSES BY INSTRUMENT NO. 4432 RECORDED IN FRESNO COUNTY RECORDS (SEE DETAIL F ON SHEET 5)

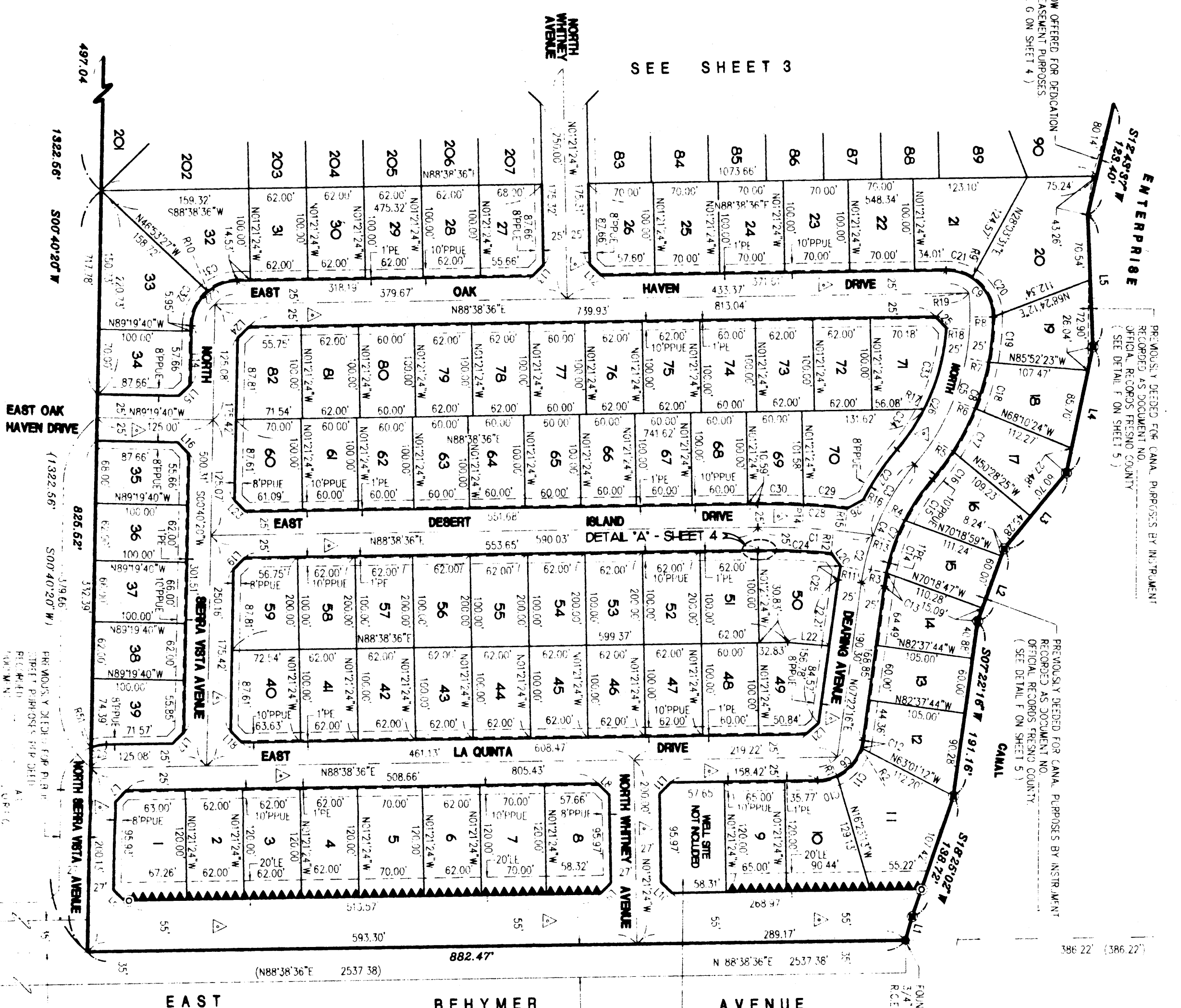
PREVIOUSLY DEDICATED FOR CANAL PURPOSES BY INSTRUMENT NO. 4432 RECORDED IN FRESNO COUNTY RECORDS (SEE DETAIL F ON SHEET 5)

SOUTH 1/4 CORNER OF SECTION 13, T. 12 S., R. 20 E., M.D.B. & M. FOUND AND ACCEPTED 3/4" IRON PIPE, NO TAG, DOWN 6' SET TAG REC-19789

EAST INTERNATIONAL AVENUE

CENTER QUARTER CORNER OF SECTION 13, T. 12 S., R. 20 E., M.D.B. & M. FOUND AND ACCEPTED 3/4" IRON PIPE, NO TAG, DOWN 6' (SEE DETAIL G ON SHEET 4)

SEE SHEET 3



PREVIOUSLY DEDICATED FOR PUBLIC STREET PURPOSES PER DECISION OF THE CITY OF FRESNO AS DOCUMENT NO. 4432 RECORDED IN FRESNO COUNTY RECORDS (SEE DETAIL F ON SHEET 5)

PREVIOUSLY DEDICATED FOR CANAL PURPOSES BY INSTRUMENT NO. 4432 RECORDED IN FRESNO COUNTY RECORDS (SEE DETAIL F ON SHEET 5)

FOUND AND ACCEPTED 3/4" IRON PIPE, NO TAG, DOWN 6'

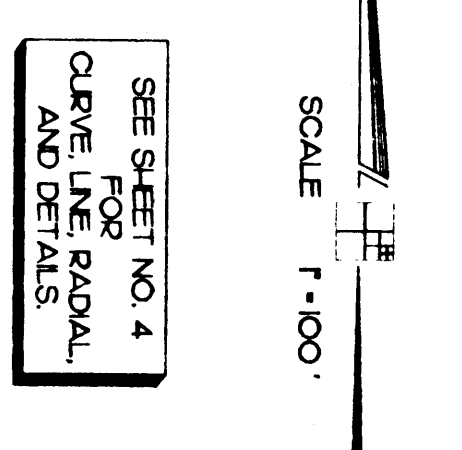
MAP OF TRACT NO. 4788

INCLUDING 131 PLANNED DEVELOPMENT LOTS
 PHASE II OF TENTATIVE TRACT NO. 4432
 IN THE CITY OF FRESNO
 FRESNO COUNTY, CALIFORNIA
 SURVEYED AND PLATTED IN MAY, 1994
 BY EDWARD D. DUNKEL AND ASSOCIATES
 CONSISTING OF FIVE SHEETS
 SHEET 2 OF 5 SHEETS

BASIS OF BEARINGS
 THE NORTH LINE OF THE SOUTHWEST QUARTER OF SECTION 13, T. 12 S., R. 20 E., SAID LINE, ALSO BEING THE CENTER LINE OF EAST INTERNATIONAL AVENUE, TAKEN TO BE N 88°33'45" E, AS SHOWN ON THE MAP OF TRACT NO. 4432 RECORDED IN VOLUME 59 OF PLATS AT PAGES 11, 12, AND 13, FRESNO COUNTY RECORDS.

- LEGEND**
- FOUND 1" O.D. IRON PIPE DOWN 6' TAGGED REC-19789, OR AS NOTED
 - FOUND 3-1/2" x 5" CONCRETE FRESNO IRRIGATION DISTRICT CONCRETE MONUMENT.
 - SET 1" O.D. IRON PIPE DOWN 6' AND TAGGED REC-19789, EXCEPT AS NOTED.
 - SET 1" O.D. IRON PIPE 30" LONG, UP 4", IN 6" DIA. x 30" CONCRETE MONUMENT DOWN 6' AND TAGGED REC-19789, EXCEPT AS NOTED.
 - () RECORD DATA PER TRACT MAP 4432 RECORDED IN VOLUME 59, PLAT AT PAGES 11, 12, AND 13, FRESNO COUNTY RECORDS.
 - PE PEDESTRIAN EASEMENT NOW OFFERED FOR DEDICATION FOR PUBLIC USE.
 - PPU PUBLIC UTILITY EASEMENT NOW OFFERED FOR DEDICATION FOR PUBLIC USE.
 - LE LANDSCAPE EASEMENT NOW OFFERED FOR DEDICATION FOR PUBLIC USE.
 - ▲▲▲ INDICATES RELINQUISHMENT OF DIRECT ACCESS RIGHTS.
 - ▲ INDICATES THE LIMITS OF THIS SUBDIVISION.
 - ▲ INDICATES PORTIONS NOW OFFERED FOR DEDICATION FOR PUBLIC STREET PURPOSES.
 - DENOTES RADIAL BEARING TO CURVE

NOTE
 1" O.D. x 30" LONG IRON PIPE TO BE SET 6" DOWN AND TAGGED REC-19789, AT ALL LOT CORNERS, ANGLE POINTS, BEGINNING OF CURVES AND END OF CURVES, OR AS NOTED WITHIN THE TIME SPECIFIED IN THE SUBDIVISION AGREEMENT FOR THIS TRACT.



REVISIONS

06/04/94	1	ADD
09/19/95	2	ADD
11/22/96	3	ADD
02/29/98	4	ADD

DATE: 03/10/94
 DRAWN BY: CAD/ALB
 CHECKED BY: EDR

