



Prepared on Thu Oct 18 01:09:53 2018

Street Names, Addresses and (Lot Numbers) for T4781



MAP OF TRACT NO. 4781

PHASE III OF TENTATIVE TRACT NO. 4759
 IN THE CITY OF FRESNO
 FRESNO COUNTY, CALIFORNIA
 SURVEYED AND PLATTED IN SEPTEMBER, 1995
 BY EDWARD D. DUNKEL AND ASSOCIATES

CONSISTING OF TWO SHEETS
 SHEET 2 OF 2 SHEET

BASIS OF BEARINGS

THE EAST LINE OF THE SOUTHWEST QUARTER OF SECTION 24, TOWNSHIP 12 SOUTH, RANGE 20 EAST, M. D. B. & M., TAKEN TO BE NORTH 00°16'30" WEST, AS SHOWN ON THE MAP OF TRACT NO. 4362, RECORDED IN VOLUME 54 OF PLATS AT PAGES 23, 24, & 25, FRESNO COUNTY RECORDS.

* NOTE *

1" O.D. x 30" LONG IRON PIPE TO BE SET 6" DOWN AND TAGGED RCE-19789, AT ALL LOT CORNERS, ANGLE POINTS, BEGINNING OF CURVES AND END OF CURVES, OR AS NOTED WITHIN THE TIME SPECIFIED IN THE SUBDIVISION AGREEMENT FOR THIS TRACT.

20" PIPELINE EASEMENT DECEDED TO FRESNO IRRIGATION DISTRICT PER ULED RECORDED FEBRUARY 27, 1997 AS DOCUMENT NO. 97027864, O.R.F.C.

LEGEND

- EXISTING MONUMENT FOUND AND ACCEPTED OR AS NOTED.
- ⊙ SET 1" O.D. IRON PIPE, 30" LONG, UP 6", IN 6" DIA. x 30" CONCRETE MONUMENT DOWN 6" AND TAGGED RCE-19789, EXCEPT AS NOTED.
- () RECORD DATA PER TRACT NO. 4758, RECORDED IN VOLUME 61 OF PLATS AT PAGES 1 TO 4, F.C.R.
- { } RECORD DATA PER TRACT NO. 4549 RECORDED IN VOLUME 55 OF PLATS AT PAGES 79 & 80, F.C.R.
- [] RECORD DATA PER RECORD OF SURVEY RECORDED IN BOOK 33 OF RECORD OF SURVEYS, PAGE 16, FRESNO COUNTY RECORDS.
- [] RECORD DATA PER TRACT NO. 4780, RECORDED IN VOLUME _____ OF PLATS AT PAGES _____, F.C.R.
- < > RECORD DATA PER TRACT NO. 4362 RECORDED IN VOLUME 54 OF PLATS AT PAGES 23, 24, & 25, F.C.R.
- PUE PUBLIC UTILITY EASEMENT NOW OFFERED FOR DEDICATION FOR PUBLIC USE.
- C.R.# CORNER RECORD NUMBER PER TIES ON FILE WITH FRESNO COUNTY SURVEYOR'S OFFICE.
- (r) DENOTES A RADIAL BEARING.
- PE PEDESTRIAN EASEMENT NOW OFFERED FOR DEDICATION FOR PUBLIC USE.
- PPUE PLANTING AND PUBLIC UTILITY EASEMENT NOW OFFERED FOR DEDICATION FOR PUBLIC USE.
- LE LANDSCAPE EASEMENT NOW OFFERED FOR DEDICATION FOR PUBLIC USE.
- ▲▲▲▲ INDICATES RELINQUISHMENT OF DIRECT ACCESS RIGHTS.
- BLUE BORDER INDICATES THE LIMITS OF THIS SUBDIVISION.
- △ INDICATES PORTIONS NOW OFFERED FOR DEDICATION FOR PUBLIC STREET PURPOSES.

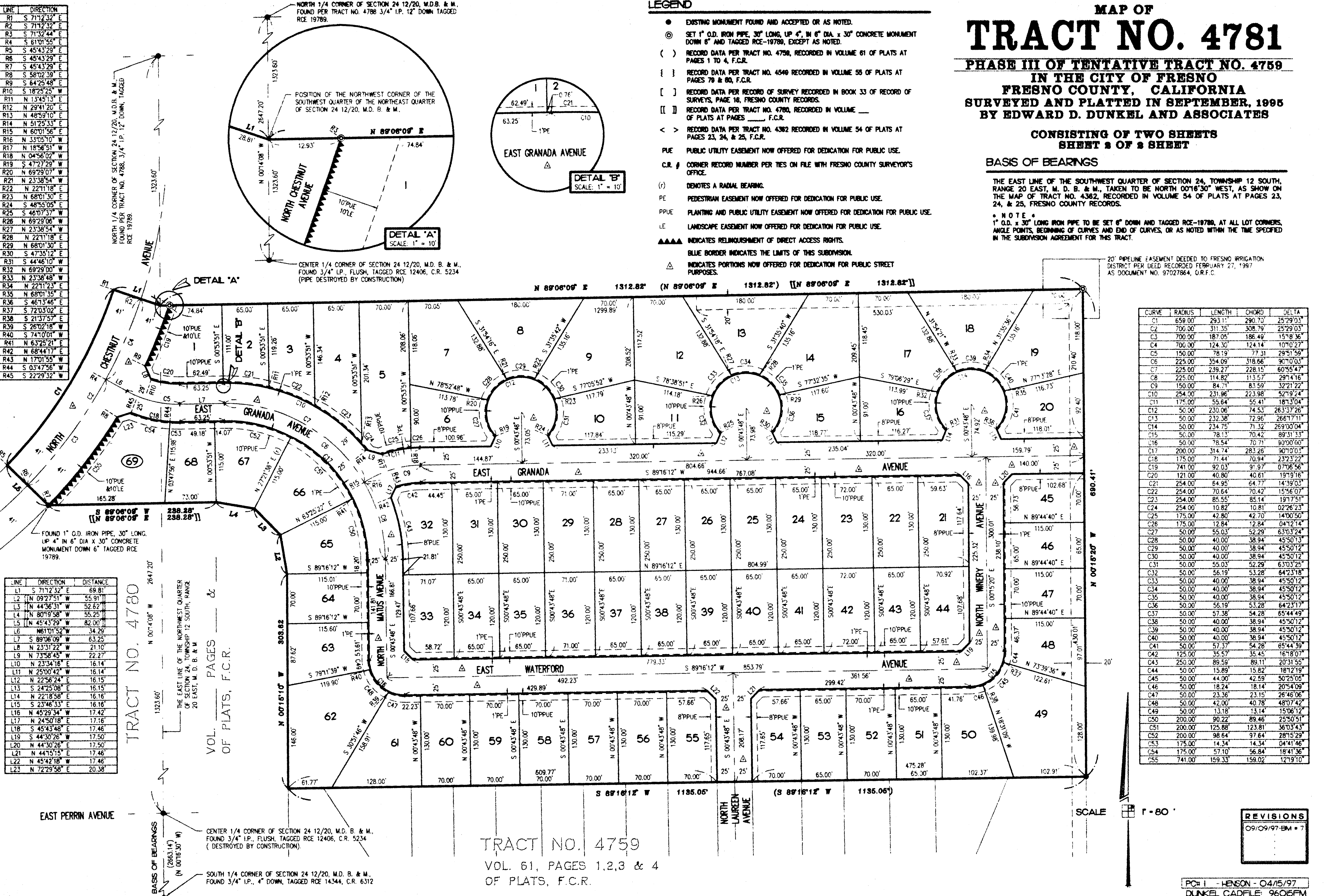
LINE	DIRECTION	DISTANCE
R1	S 71°12'32" E	69.81
R2	S 71°12'32" E	55.91
R3	S 71°32'44" E	52.62
R4	S 61°01'55" E	55.25
R5	S 45°43'29" E	82.00
R6	S 45°43'29" E	34.29
R7	S 45°43'29" E	22.27
R8	S 58°02'39" E	16.14
R9	S 64°25'48" E	16.15
R10	S 18°25'25" W	17.46
R11	N 13°45'13" E	17.50
R12	N 29°41'20" E	17.46
R13	N 48°59'10" E	17.46
R14	N 51°25'33" E	20.38
R15	N 60°01'56" E	17.46
R16	N 33°05'10" W	17.46
R17	N 18°56'51" W	17.50
R18	N 04°56'02" W	17.46
R19	S 47°27'29" W	17.46
R20	N 69°29'07" W	17.46
R21	N 23°38'54" W	17.46
R22	N 22°11'18" E	17.46
R23	N 68°01'30" E	17.46
R24	S 48°55'05" E	17.46
R25	S 48°07'57" W	17.46
R26	N 69°29'06" W	17.46
R27	N 23°38'54" W	17.46
R28	N 22°11'18" E	17.46
R29	N 68°01'30" E	17.46
R30	S 47°35'12" E	17.46
R31	S 44°46'10" W	17.46
R32	N 69°29'00" W	17.46
R33	N 23°38'48" W	17.46
R34	N 22°11'23" E	17.46
R35	N 68°01'35" E	17.46
R36	S 48°13'48" E	17.46
R37	S 72°03'02" E	17.46
R38	S 21°37'57" E	17.46
R39	S 26°02'18" W	17.46
R40	S 74°10'01" W	17.46
R41	N 63°25'21" E	17.46
R42	N 68°44'17" E	17.46
R43	N 17°01'55" W	17.46
R44	S 03°47'56" W	17.46
R45	S 22°29'32" W	17.46

LINE	DIRECTION	DISTANCE
L1	S 71°12'32" E	69.81
L2	N 09°27'51" W	55.91
L3	N 44°36'31" W	52.62
L4	N 80°19'58" W	55.25
L5	N 45°43'29" E	82.00
L6	N 61°01'52" W	34.29
L7	S 89°06'09" W	63.25
L8	N 23°31'22" W	21.10
L9	N 73°58'45" W	22.27
L10	N 23°34'16" E	16.14
L11	N 25°00'42" W	16.14
L12	N 22°56'24" E	16.15
L13	S 24°25'08" E	16.15
L14	N 22°18'58" E	16.16
L15	S 23°48'33" E	16.16
L16	N 45°29'34" W	17.42
L17	N 24°50'18" E	17.16
L18	S 45°43'48" E	17.46
L19	S 44°30'26" W	17.50
L20	N 44°30'26" W	17.50
L21	N 44°15'15" E	17.46
L22	N 45°42'18" W	17.46
L23	N 72°29'58" E	20.38

LINE	DIRECTION	DISTANCE
L1	S 71°12'32" E	69.81
L2	N 09°27'51" W	55.91
L3	N 44°36'31" W	52.62
L4	N 80°19'58" W	55.25
L5	N 45°43'29" E	82.00
L6	N 61°01'52" W	34.29
L7	S 89°06'09" W	63.25
L8	N 23°31'22" W	21.10
L9	N 73°58'45" W	22.27
L10	N 23°34'16" E	16.14
L11	N 25°00'42" W	16.14
L12	N 22°56'24" E	16.15
L13	S 24°25'08" E	16.15
L14	N 22°18'58" E	16.16
L15	S 23°48'33" E	16.16
L16	N 45°29'34" W	17.42
L17	N 24°50'18" E	17.16
L18	S 45°43'48" E	17.46
L19	S 44°30'26" W	17.50
L20	N 44°30'26" W	17.50
L21	N 44°15'15" E	17.46
L22	N 45°42'18" W	17.46
L23	N 72°29'58" E	20.38

LINE	DIRECTION	DISTANCE
L1	S 71°12'32" E	69.81
L2	N 09°27'51" W	55.91
L3	N 44°36'31" W	52.62
L4	N 80°19'58" W	55.25
L5	N 45°43'29" E	82.00
L6	N 61°01'52" W	34.29
L7	S 89°06'09" W	63.25
L8	N 23°31'22" W	21.10
L9	N 73°58'45" W	22.27
L10	N 23°34'16" E	16.14
L11	N 25°00'42" W	16.14
L12	N 22°56'24" E	16.15
L13	S 24°25'08" E	16.15
L14	N 22°18'58" E	16.16
L15	S 23°48'33" E	16.16
L16	N 45°29'34" W	17.42
L17	N 24°50'18" E	17.16
L18	S 45°43'48" E	17.46
L19	S 44°30'26" W	17.50
L20	N 44°30'26" W	17.50
L21	N 44°15'15" E	17.46
L22	N 45°42'18" W	17.46
L23	N 72°29'58" E	20.38

LINE	DIRECTION	DISTANCE
L1	S 71°12'32" E	69.81
L2	N 09°27'51" W	55.91
L3	N 44°36'31" W	52.62
L4	N 80°19'58" W	55.25
L5	N 45°43'29" E	82.00
L6	N 61°01'52" W	34.29
L7	S 89°06'09" W	63.25
L8	N 23°31'22" W	21.10
L9	N 73°58'45" W	22.27
L10	N 23°34'16" E	16.14
L11	N 25°00'42" W	16.14
L12	N 22°56'24" E	16.15
L13	S 24°25'08" E	16.15
L14	N 22°18'58" E	16.16
L15	S 23°48'33" E	16.16
L16	N 45°29'34" W	17.42
L17	N 24°50'18" E	17.16
L18	S 45°43'48" E	17.46
L19	S 44°30'26" W	17.50
L20	N 44°30'26" W	17.50
L21	N 44°15'15" E	17.46
L22	N 45°42'18" W	17.46
L23	N 72°29'58" E	20.38



CURVE	RADIUS	LENGTH	CHORD	DELTA
C1	659.00	293.11	290.70	25°29'03"
C2	700.00	311.35	308.79	25°29'03"
C3	700.00	187.05	186.49	15°18'36"
C4	700.00	124.30	124.14	10°10'27"
C5	150.00	78.19	77.31	29°51'59"
C6	225.00	354.09	318.66	90°10'03"
C7	225.00	239.27	228.15	60°55'47"
C8	225.00	114.82	113.57	29°14'16"
C9	150.00	84.71	83.59	32°21'22"
C10	254.00	231.96	223.98	52°19'24"
C11	175.00	55.64	55.41	18°13'04"
C12	50.00	230.06	74.53	263°37'26"
C13	50.00	232.38	72.96	266°17'11"
C14	50.00	234.75	71.32	269°00'04"
C15	50.00	78.13	70.42	89°31'33"
C16	50.00	78.54	70.71	90°00'00"
C17	200.00	314.74	283.26	90°10'03"
C18	175.00	71.44	70.94	232°23'22"
C19	741.00	92.03	91.97	07°06'56"
C20	121.00	40.80	40.61	19°19'16"
C21	254.00	64.95	64.77	14°19'03"
C22	254.00	70.64	70.42	15°56'07"
C23	254.00	85.55	85.14	19°17'51"
C24	254.00	10.82	10.81	02°26'23"
C25	175.00	42.80	42.70	14°00'50"
C26	175.00	12.84	12.84	04°12'14"
C27	50.00	55.03	52.29	63°03'25"
C28	50.00	40.00	38.94	45°50'12"
C29	50.00	40.00	38.94	45°50'12"
C30	50.00	40.00	38.94	45°50'12"
C31	50.00	55.03	52.29	63°03'25"
C32	50.00	56.19	53.28	64°23'18"
C33	50.00	40.00	38.94	45°50'12"
C34	50.00	40.00	38.94	45°50'12"
C35	50.00	40.00	38.94	45°50'12"
C36	50.00	56.19	53.28	64°23'18"
C37	50.00	57.38	54.28	65°44'49"
C38	50.00	40.00	38.94	45°50'12"
C39	50.00	40.00	38.94	45°50'12"
C40	50.00	40.00	38.94	45°50'12"
C41	50.00	57.37	54.28	65°44'49"
C42	125.00	35.57	35.45	16°18'07"
C43	250.00	89.59	89.11	20°31'55"
C44	50.00	15.89	15.82	18°12'19"
C45	50.00	44.00	42.59	50°25'05"
C46	50.00	18.24	18.14	20°54'09"
C47	50.00	23.36	23.15	26°46'06"
C48	50.00	42.00	40.78	48°07'42"
C49	50.00	13.18	13.14	15°06'12"
C50	200.00	90.22	89.46	25°50'51"
C51	200.00	125.88	123.81	36°03'43"
C52	200.00	98.66	97.64	28°15'29"
C53	175.00	14.34	14.34	04°41'46"
C54	175.00	57.10	56.84	18°41'36"
C55	741.00	159.33	159.02	12°19'10"

TRACT NO. 4759
 VOL. 61, PAGES 1, 2, 3 & 4
 OF PLATS, F.C.R.

REVISIONS
09/09/97-BM-7

PC#1 - HENSON - 04/15/97
 DUNKEL CADFILE: 960165FM