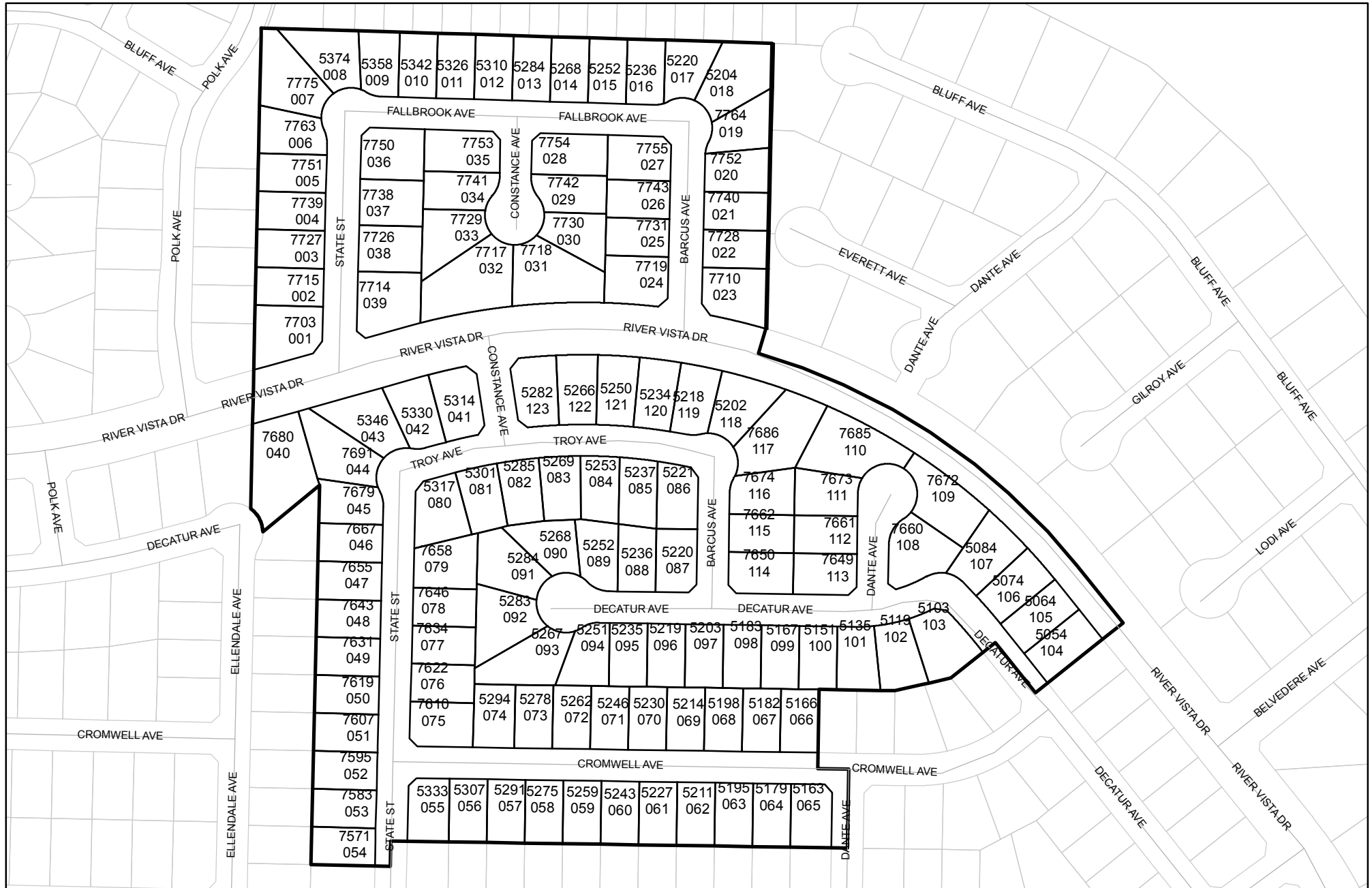




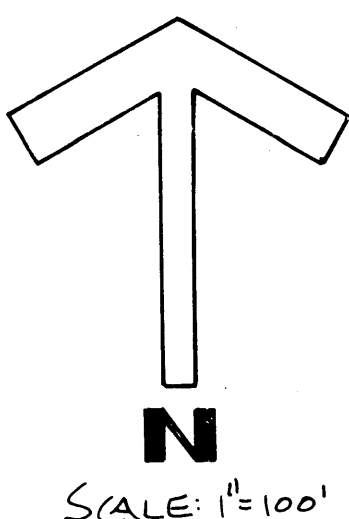
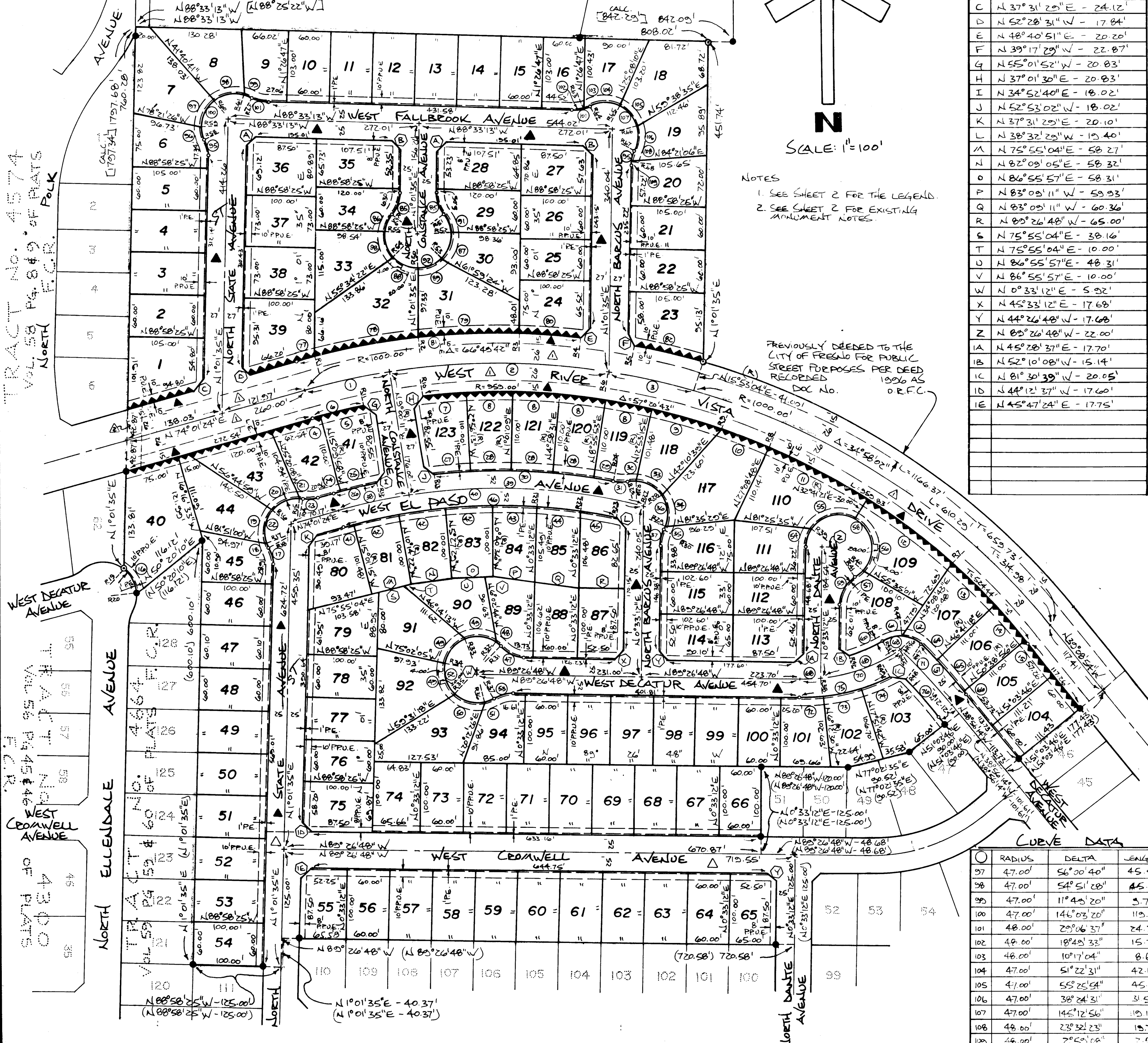
Street Names, Addresses and (Lot Numbers) for T4768

Prepared on Thu Feb 14 22:44:43 2019



TRACT No. 4574
 VOL. 58 PG. 89 OF PLATS
 North F.C.R. Polk

NOTE: THOSE PORTIONS OF NORTH POLK AVENUE PREVIOUSLY DEEDED JUNE 7, 1930 IN BOOK 1091, PAGE 104 AS DOC. No. 14077, O.R.F.C. WHICH ARE NOT DELINEATED ON THIS MAP ARE DEEMED ABANDONED PURSUANT TO SECTION 66429, 20 1/2 OF THE SUBDIVISION MAP ACT.



NOTES
 1. SEE SHEET 2 FOR THE LEGEND.
 2. SEE SHEET 2 FOR EXISTING ALIGNMENT NOTES.

PREVIOUSLY DEEDED TO THE CITY OF FRESNO FOR PUBLIC STREET PURPOSES PER DEED RECORDED 100% AS DOC No. O.R.F.C.

TRACT No. 4768

McCAFFREY COMMUNITY No. 7

PHASE II OF TENTATIVE TRACT No. 4664
 IN THE CITY OF FRESNO, COUNTY OF FRESNO, STATE OF CALIFORNIA
 SURVEYED AND PLATTED IN NOVEMBER OF 1994 BY GARY GIANNETTA
 CONSISTING OF THREE SHEETS
 SHEET THREE OF THREE SHEETS

LINE DATA

LINE	BEARING	DISTANCE
A	N 46° 14' 11" E	- 17.60'
B	N 43° 45' 45" W	- 17.74'
C	N 37° 31' 25" E	- 24.12'
D	N 52° 28' 31" W	- 17.84'
E	N 48° 40' 51" E	- 20.20'
F	N 39° 17' 29" W	- 22.87'
G	N 55° 01' 52" W	- 20.83'
H	N 37° 01' 30" E	- 20.83'
I	N 34° 52' 40" E	- 18.02'
J	N 52° 53' 02" W	- 18.02'
K	N 37° 31' 25" E	- 20.10'
L	N 38° 32' 23" W	- 19.40'
M	N 75° 55' 04" E	- 58.27'
N	N 82° 09' 05" E	- 58.37'
O	N 86° 55' 57" E	- 58.31'
P	N 83° 09' 11" W	- 59.93'
Q	N 83° 09' 11" W	- 60.36'
R	N 89° 26' 48" W	- 65.00'
S	N 75° 55' 04" E	- 38.16'
T	N 75° 55' 04" E	- 10.00'
U	N 86° 55' 57" E	- 48.31'
V	N 86° 55' 57" E	- 10.00'
W	N 0° 33' 12" E	- 5.92'
X	N 45° 33' 12" E	- 17.68'
Y	N 44° 26' 48" W	- 17.68'
Z	N 89° 26' 48" W	- 22.00'
1A	N 45° 27' 44" E	- 17.70'
1B	N 52° 10' 08" W	- 15.14'
1C	N 81° 30' 30" W	- 20.05'
1D	N 44° 12' 37" W	- 17.60'
1E	N 45° 47' 24" E	- 17.75'

CURVE DATA

NO.	RADIUS	DELTA	LENGTH	TANGENT
1	1000.00'	6°58'25"	121.71'	60.93'
2	1000.00'	17°47'05"	310.40'	156.46'
3	1000.00'	7°06'10"	123.97'	62.06'
4	959.00'	0°48'38"	13.57'	6.78'
5	959.00'	3°33'13"	61.15'	30.58'
6	959.00'	4°27'51"	74.72'	37.38'
7	959.00'	3°33'24"	59.53'	29.77'
8	959.00'	3°57'22"	66.22'	33.12'
9	959.00'	6°16'28"	105.00'	52.55'
10	959.00'	4°10'56"	70.00'	35.02'
11	959.00'	9°20'46"	156.43'	78.35'
12	959.00'	8°55'15"	149.31'	74.81'
13	959.00'	5°04'42"	85.00'	42.58'
14	959.00'	3°57'38"	66.29'	33.16'
15	959.00'	0°12'10"	3.35'	1.70'
16	47.00'	52°27'44"	43.04'	23.16'
17	48.00'	28°06'37"	24.35'	12.46'
18	47.00'	8°33'26"	7.02'	3.52'
19	47.00'	59°43'00"	49.07'	27.04'
20	47.00'	52°07'35"	46.04'	25.06'
21	47.00'	4°07'56"	3.35'	1.70'
22	47.00'	128°37'57"	106.52'	97.73'
23	48.00'	26°31'31"	22.22'	11.31'
24	849.00'	0°48'38"	12.01'	6.01'
25	849.00'	3°29'49"	51.82'	25.92'
26	849.00'	4°08'27"	63.83'	31.93'
27	849.00'	3°24'00"	50.38'	25.20'
28	849.00'	3°57'22"	58.62'	29.32'
29	849.00'	1°54'41"	28.32'	14.16'
30	849.00'	17°01'47"	254.57'	128.25'
31	48.00'	25°08'11"	21.06'	10.70'

NO.	RADIUS	DELTA	LENGTH	TANGENT
32	47.00'	13°09'13"	10.79'	5.42'
33	47.00'	58°20'15"	47.89'	26.32'
34	47.00'	58°30'14"	47.99'	26.32'
35	47.00'	3°47'44"	3.11'	1.56'
36	47.00'	133°57'26"	109.89'	110.61'
37	48.00'	69°06'37"	24.54'	12.77'
38	824.00'	6°58'25"	100.29'	50.21'
39	824.00'	23°21'51"	333.85'	169.25'
40	824.00'	30°11'16"	434.15'	222.24'
41	799.00'	0°57'21"	13.33'	6.66'
42	799.00'	4°44'53"	66.66'	33.33'
43	799.00'	4°25'35"	61.74'	30.87'
44	799.00'	4°19'21"	60.28'	30.15'
45	799.00'	3°50'11"	53.50'	26.76'
46	799.00'	27°58'11"	388.88'	198.37'
47	48.00'	45°04'52"	37.77'	19.52'
48	47.00'	17°21'30"	14.24'	7.17'
49	47.00'	54°42'40"	46.52'	25.37'
50	47.00'	54°42'38"	46.52'	25.37'
51	47.00'	14°42'16"	12.06'	6.06'
52	47.00'	258°54'28"	212.38'	-
53	48.00'	33°40'32"	28.34'	14.16'
54	47.00'	30°23'52"	24.94'	12.77'
55	47.00'	91°44'17"	75.25'	48.45'
56	47.00'	9°51'05"	70.08'	51.46'
57	47.00'	20°12'38"	16.58'	8.38'
58	47.00'	23°31'52"	19.85'	10.45'
59	48.00'	57°31'52"	48.20'	26.35'
60	225.00'	13°27'28"	52.85'	26.55'
61	47.00'	38°56'32"	31.94'	16.62'
62	47.00'	35°32'56"	29.16'	15.07'
63	47.00'	74°29'28"	61.11'	35.73'
64	848.00'	2°08'43"	31.75'	15.88'
65	848.00'	3°57'38"	58.62'	29.32'
66	848.00'	0°24'50"	6.13'	3.06'
67	848.00'	6°31'11"	96.49'	48.32'
68	250.00'	6°38'18"	28.97'	14.50'
69	250.00'	27°37'14"	120.52'	61.45'
70	250.00'	34°15'32"	149.48'	77.05'
71	823.00'	7°43'36"	110.99'	55.58'
72	275.00'	6°45'42"	32.45'	16.25'
73	275.00'	11°39'12"	55.93'	28.06'
74	275.00'	9°00'19"	43.22'	21.66'
75	275.00'	27°25'13"	131.61'	67.09'
76	798.00'	5°27'33"	76.03'	38.05'
77	1041.00'	1°16'56"	23.30'	11.65'
78	1041.00'	8°06'03"	147.21'	73.73'
79	1041.00'	8°03'10"	146.36'	73.30'
80	1041.00'	4°41'21"	85.20'	42.62'
81	1041.00'	22°07'45"	402.06'	203.57'
82	1041.00'	5°04'59"	92.35'	46.21'
83	1041.00'	1°14'10"	23.02'	11.51'
84	1041.00'	1°14'10"	23.02'	11.51'
85	48.00'	39°47'16"	33.33'	17.37'
86	47.00'	31°06'31"	25.52'	13.08'
87	47.00'	48°45'38"	40.00'	21.30'
88	47.00'	48°45'45"	40.00'	21.30'
89	47.00'	48°32'14"	40.64'	21.62'
90	47.00'	32°38'39"	26.78'	13.76'
91	47.00'	25°34'32"	212.93'	-
92	47.00'	23°21'51"	19.17'	9.72'

RADIAL DATA:

NO.	BEARING	DISTANCE
R45	N 23°42'41" E	-
R46	N 79°00'35" E	-
R47	S 62°26'54" E	-
R48	N 85°58'17" W	-
R1	N 14°41'40" W	-
R2	N 6°35'31" W	-
R3	N 1°27'48" E	-
R4	N 6°09'05" E	-
R5	N 10°48'05" E	-
R6	N 8°46'54" E	-
R7	N 41°36'36" E	-
R8	N 23°20'35" E	-
R9	N 19°09'39" E	-
R10	N 6°29'37" W	-
R11	N 11°30'45" W	-
R12	N 11°40'09" W	-
R13	N 6°20'13" W	-
R14	N 10°32'05" E	-
R15	N 6°24'59" E	-
R16	N 49°42'36" W	-
R17	S 70°28'24" W	-
R18	S 61°54'58" W	-
R19	N 36°05'19" E	-
R20	N 88°33'03" E	-
R21	N 3°45'03" E	-
R22	N 8°04'24" E	-
R23	N 11°54'35" E	-
R24	S 10°50'34" W	-
R25	N 14°17'37" W	-
R26	N 1°08'24" W	-
R27	N 14°12'40" E	-
R28	N 57°21'51" E	-
R29	S 64°07'55" E	-
R30	N 6°20'11" W	-
R31	N 45°38'04" E	-
R32	N 28°16'34" E	-
R33	N 28°26'06" W	-
R34	N 85°08'46" W	-
R35	S 38°08'34" W	-
R36	S 18°34'04" E	-
R37	S 33°16'20" E	-
R38	S 58°05'06" E	-
R39	N 59°02'56" W	-
R40	S 52°07'34" E	-
R41	S 31°54'56" E	-
R42	S 16°29'25" E	-
R43	N 29°56'58" W	-
R44	N 8°59'30" E	-
R45	S 33°42'20" E	-
R46	N 43°20'10" E	-
R47	N 44°32'35" E	-
R48	N 45°36'13" E	-
R49	S 26°52'01" E	-
R50	S 2°10'50" W	-
R51	N 51°14'19" E	-
R52	N 83°52'58" E	-
R53	N 89°21'24" E	-
R54	S 50°58'35" W	-
R55	N 80°17'40" W	-
R56	N 48°11'09" W	-
R57	S 64°30'04" W	-
R58	S 87°51'56" W	-
R59	N 36°07'24" W	-
R60	N 30°33'24" E	-
R61	N 18°44'04" E	-
R62	N 30°33'24" E	-
R63	S 17°22'46" E	-
R64	N 27°38'50" W	-

CURVE DATA

NO.	RADIUS	DELTA	LENGTH	TANGENT
97	47.00'	56°00'40"	45.05'	25.00'
98	47.00'	54°51'28"	45.00'	24.39'
99	47.00'	11°48'20"	5.70'	4.87'
100	47.00'	144°03'20"	119.81'	154.00'
101	48.00'	29°06'37"	24.39'	12.46'
102	48.00'	18°48'33"	15.77'	7.26'
103	48.00'	10°17'04"	8.62'	4.32'
104	47.00'	51°22'31"	42.14'	22.61'
105	47.00'	55°25'54"	45.47'	24.69'
106	47.00'	38°24'31"	31.51'	16.37'
107	47.00'	143°12'56"	119.12'	150.05'
108	48.00'	23°32'23"	15.72'	10.00'
109	48.00'	29°59'09"	7.55'	4.25'

BLUE BORDER AREA = 27.69 ACRES