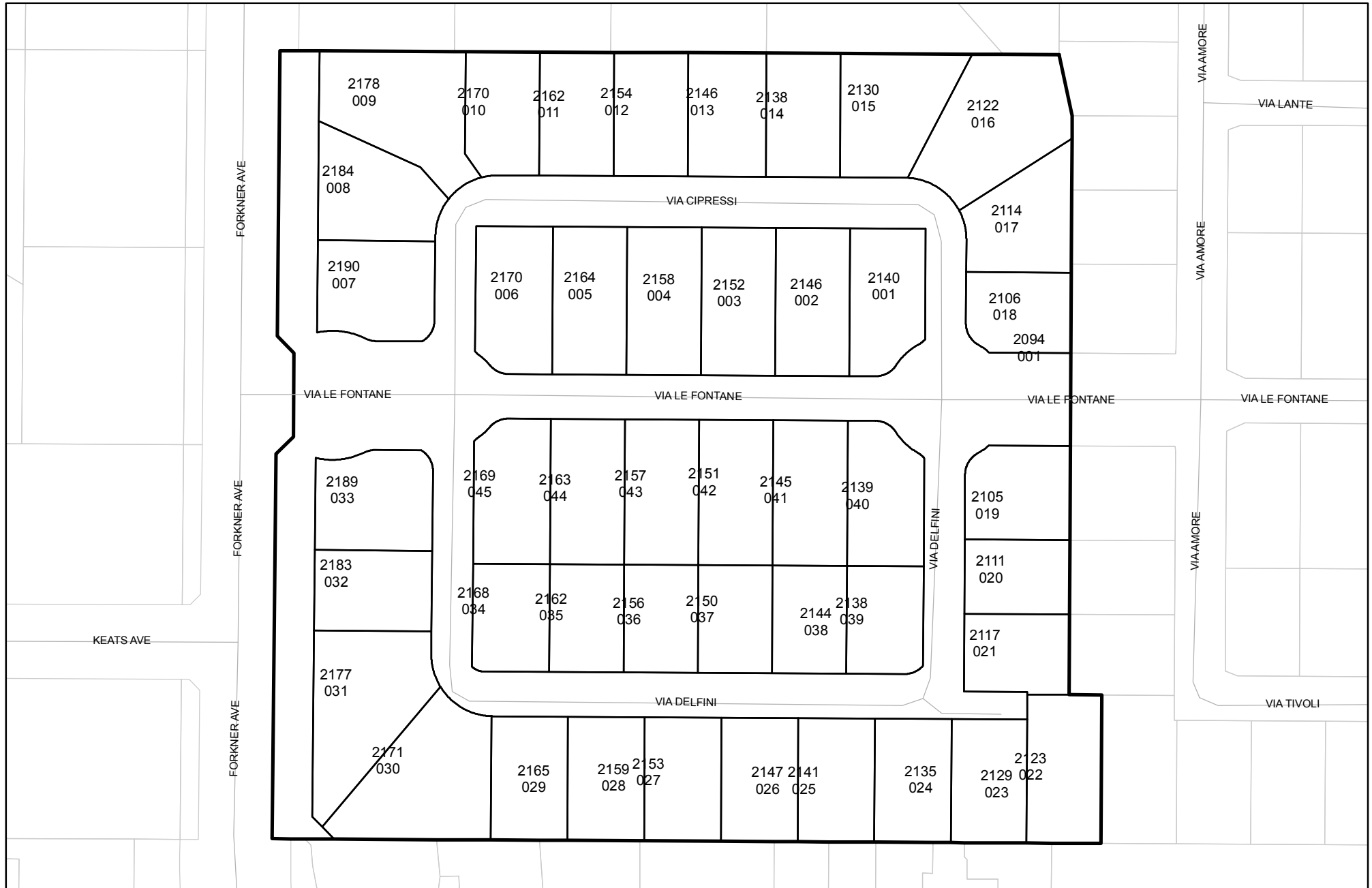




Prepared on Tue Apr 02 14:44:06 2013

Street Names, Addresses and (Lot Numbers) for T4767



MAP OF TRACT NO. 4767

A PLANNED DEVELOPMENT
IN THE CITY OF FRESNO
FRESNO COUNTY, CALIFORNIA
SURVEYED AND PLATTED IN JANUARY, 1996
BY EDWARD D. DUNKEL AND ASSOCIATES

CONSISTING OF TWO SHEETS
SHEET 2 OF 2 SHEETS

BASIS OF BEARINGS

THE EAST LINE OF THE SOUTHEAST QUARTER OF SECTION 7, T. 13 S., R. 20 E., M.D.B. & M. (ALSO THE CENTERLINE OF NORTH WEST AVENUE) IS TAKEN TO BE N 01°00' E, AS SHOWN ON THE MAP OF BULLARD LANDS IRRIGATED SUBDIVISION NO. 2, FRESNO COUNTY, CALIFORNIA, RECORDED IN BOOK 9 AT PAGE 15 OF RECORDS OF SURVEYS, FRESNO COUNTY RECORDS.

LEGEND

- ▲ INDICATES PREVIOUSLY DEDICATED FOR PUBLIC STREET PURPOSES PER B.L.L.S. NO. 2 BOOK 9, PAGE 15, RECORD OF SURVEYS, FRESNO COUNTY RECORDS.
- SET 1" IRON PIPE DOWN 6", TAGGED RCE-19789, WITNESS CORNER, 3' OFFSET TYPICAL
- SET 1" O.D. IRON PIPE, DOWN 6" AND TAGGED RCE-19789, EXCEPT AS NOTED.
- EXISTING MONUMENT FOUND AND ACCEPTED OR AS NOTED.
- SET 1" O.D. IRON PIPE, 30" LONG, UP 4", IN 6" DIA. x 30" CONCRETE MONUMENT DOWN 6" AND TAGGED RCE-19789, EXCEPT AS NOTED.
- () RECORD DATA PER TRACT NO. 1652 RECORDED IN VOLUME 20 OF PLATS AT PAGES 4 & 5, FRESNO COUNTY RECORDS.
- [] RECORD DATA PER PARCEL MAP NO. 74-06 RECORDED IN BOOK 12 AT PAGE 60, OF PARCEL MAPS, FRESNO COUNTY RECORDS.
- { } RECORD DATA PER TRACT NO. 2620 RECORDED IN VOLUME 29 OF PLATS AT PAGE 15, FRESNO COUNTY RECORDS.
- < > RECORD DATA PER TRACT NO. 2683 RECORDED IN VOLUME 29 OF PLATS AT PAGE 71, FRESNO COUNTY RECORDS.
- (()) RECORD DATA PER TRACT NO. 1652 RECORDED IN VOLUME 20 OF PLATS AT PAGES 4 & 5, FRESNO COUNTY RECORDS.
- << >> RECORD DATA PER B.L.L.S. NO. 2, RECORDED IN BOOK 9, PAGE 15 OF RECORD OF SURVEYS, FRESNO COUNTY RECORDS.
- ⊗ SET CHISELED "X" ON CONCRETE, TYPICAL
- PUE PUBLIC UTILITY EASEMENT NOW OFFERED FOR DEDICATION FOR PUBLIC USE.
- B.L.L.S. BULLARD LANDS IRRIGATED SUBDIVISION
- ▲▲▲▲ INDICATES RELINQUISHMENT OF DIRECT ACCESS RIGHTS.
- BLUE BORDER INDICATES THE LIMITS OF THIS SUBDIVISION.
- NOTE •

1" O.D. x 30" LONG IRON PIPE TO BE SET 6" DOWN AND TAGGED RCE-19789, AT ALL LOT CORNERS, ANGLE POINTS, BEGINNING OF CURVES AND END OF CURVES, OR AS NOTED WITHIN THE TIME SPECIFIED IN THE SUBDIVISION AGREEMENT FOR THIS TRACT.

NOTES: THIS PROPERTY IS SUBJECT TO THE FOLLOWING CONDITIONS

1. OUTLOT "A" IS FOR INGRESS AND EGRESS, LANDSCAPING, DRAINAGE AND PARKING.
2. OUTLOT "A" NOW OFFERED FOR DEDICATION FOR PUBLIC UTILITY PURPOSES.

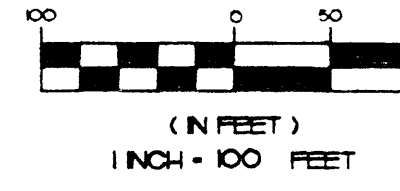
LINE TABLE

LINE	DIRECTION	DISTANCE
1	S 00°45'53" W	69.54
2	N 00°59'47" E	107.37
3	N 89°14'07" W	65.93
4	N 00°45'53" E	67.33
5	N 00°59'47" E	61.42
6	S 89°14'07" W	37.16
7	S 89°14'07" W	37.61
8	N 00°45'53" E	22.00
9	N 89°14'07" W	51.42
10	S 89°14'07" W	65.93
11	S 44°07'00" E	25.41
12	S 41°14'16" E	34.28
13	S 33°58'52" E	23.26
14	S 89°14'07" W	66.60
15	S 89°14'07" W	33.58
16	N 68°55'13" E	35.65
17	S 57°02'51" E	38.99
18	S 44°07'00" E	13.87
19	S 44°07'00" E	11.54
20	S 44°07'10" E	19.49
21	N 45°52'56" E	19.21
22	S 89°14'07" W	23.24
23	S 66°31'23" E	5.88
24	N 68°55'13" E	35.72
25	N 68°55'13" E	2.64

RADIAL TABLE

RADIAL	DIRECTION
R1	S 4°49'32" E
R2	S 48°35'12" W
R3	N 51°25'45" W
R4	N 142°27'51" W
R5	N 33°31'55" E
R6	N 62°31'10" E
R7	N 42°12'28" E
R8	S 40°38'41" E
R9	S 02°08'34" W
R10	S 58°46'23" W
R11	N 32°15'48" E
R12	S 12°56'51" W
R13	S 12°30'09" E
R14	S 29°12'30" E
R15	N 4°36'38" W
R16	N 49°21'15" E
R17	S 4°49'32" E
R18	S 42°46'23" W

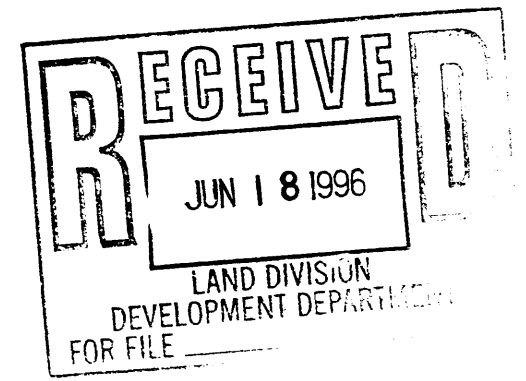
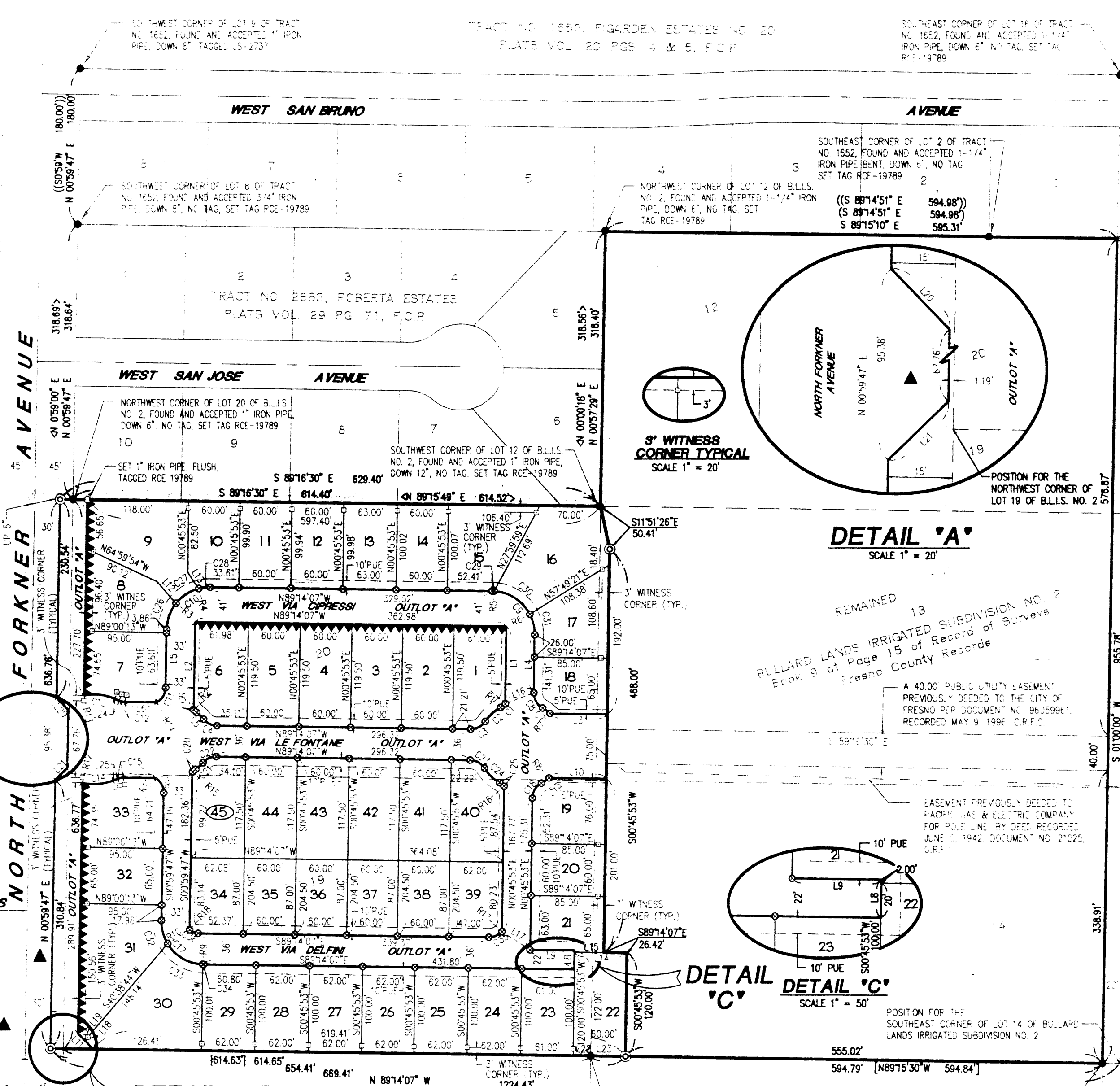
GRAPHIC SCALE



CURVE TABLE

CURVE	RADIUS	LENGTH	CHORD	DELTA
C01	20.00	6.82	6.78	19°31'52"
C02	50.00	24.49	24.24	28°01'45"
C03	20.00	19.62	19.12	57°07'46"
C04	20.00	17.70	17.13	50°42'13"
C05	40.00	11.14	11.10	16°51'14"
C06	20.00	4.91	4.90	14°04'20"
C07	50.00	10.78	10.76	12°21'01"
C08	20.00	21.27	20.28	60°56'27"
C09	50.00	78.54	78.71	90°00'00"
C10	50.00	78.34	70.57	89°46'06"
C11	20.00	20.86	19.53	59°46'11"
C12	17.50	6.93	6.89	22°42'11"
C13	55.00	36.42	35.83	35°56'46"
C14	58.00	36.63	36.02	36°11'03"
C15	17.50	6.90	6.85	22°35'06"
C16	20.00	20.47	19.59	58°36'23"
C17	50.00	78.74	70.65	90°33'54"
C18	20.00	21.27	20.28	60°56'27"
C19	50.00	10.78	10.76	12°21'01"
C20	20.00	4.91	4.90	14°04'20"
C21	40.00	11.46	11.42	16°25'01"
C22	20.00	17.70	17.13	50°42'13"
C23	20.00	19.94	19.12	57°07'46"
C24	50.00	24.49	24.24	28°01'45"
C25	20.00	6.82	6.78	19°31'52"
C26	50.00	32.79	32.21	37°14'28"
C27	50.00	32.26	31.70	36°57'54"
C28	50.00	13.29	13.25	15°13'44"
C29	50.00	2.41	2.41	0°24'00"
C30	50.00	51.46	49.23	58°56'55"
C31	50.00	24.65	24.40	28°14'44"
C32	50.00	28.12	27.78	32°13'24"
C33	50.00	49.42	47.43	56°37'49"
C34	50.00	1.20	1.20	0°02'41"
C35	20.00	16.95	16.46	48°15'25"
C36	15.00	11.01	10.78	42°27'37"

LAST 1/4 CORNER SECTION 7, T. 13 S., R. 20 E., M.D.B. & M. CORNER FALLS ON MANHOLE. POSITION ESTABLISHED PER TIES ON FILE WITH THE FRESNO COUNTY SURVEYOR.



REVISIONS

5/23/96	S.L. 2
6/1/96	S.L. 2
6/10/96	S.L. 2
6/28/96	S.L. 2
6/28/96	S.L. 2