



# Street Names, Addresses and (Lot Numbers) for T4760

Prepared on Thu Oct 18 01:12:01 2018



WEST QUARTER CORNER OF SECTION 16 T.14 S., R.21 E., M.D.B. & M., FOUND FRESNO COUNTY BRASS CAP MONUMENT, FLUSH. T.O.F.

PREVIOUSLY DEEDED FOR PUBLIC STREET PURPOSES, RECORDED AS DOCUMENT NO. 93143889, ON SEPTEMBER 20, 1994, F.C.R.

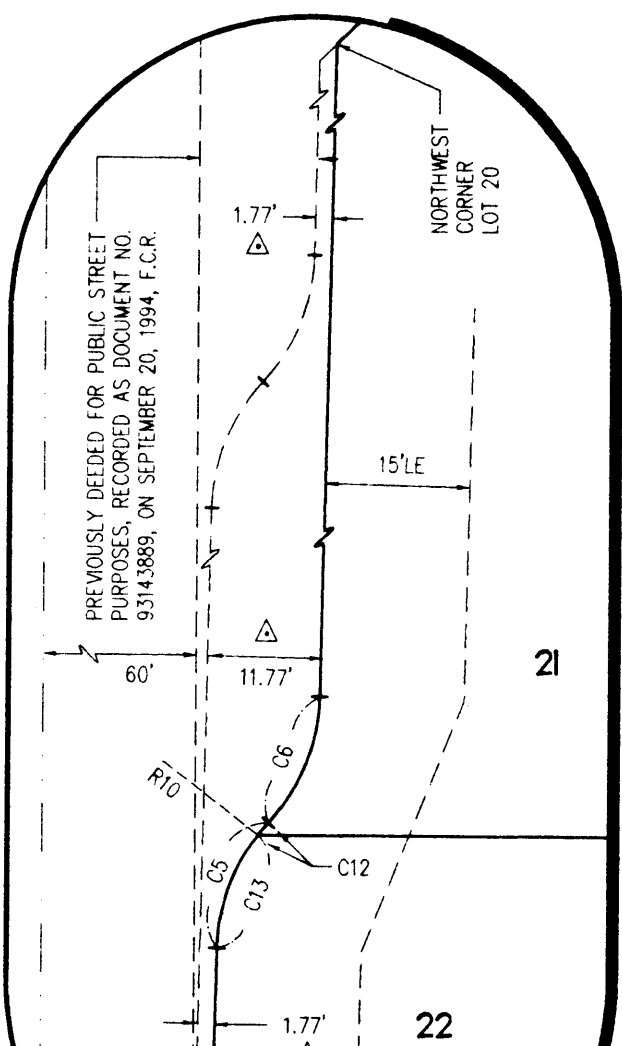
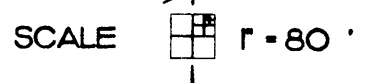
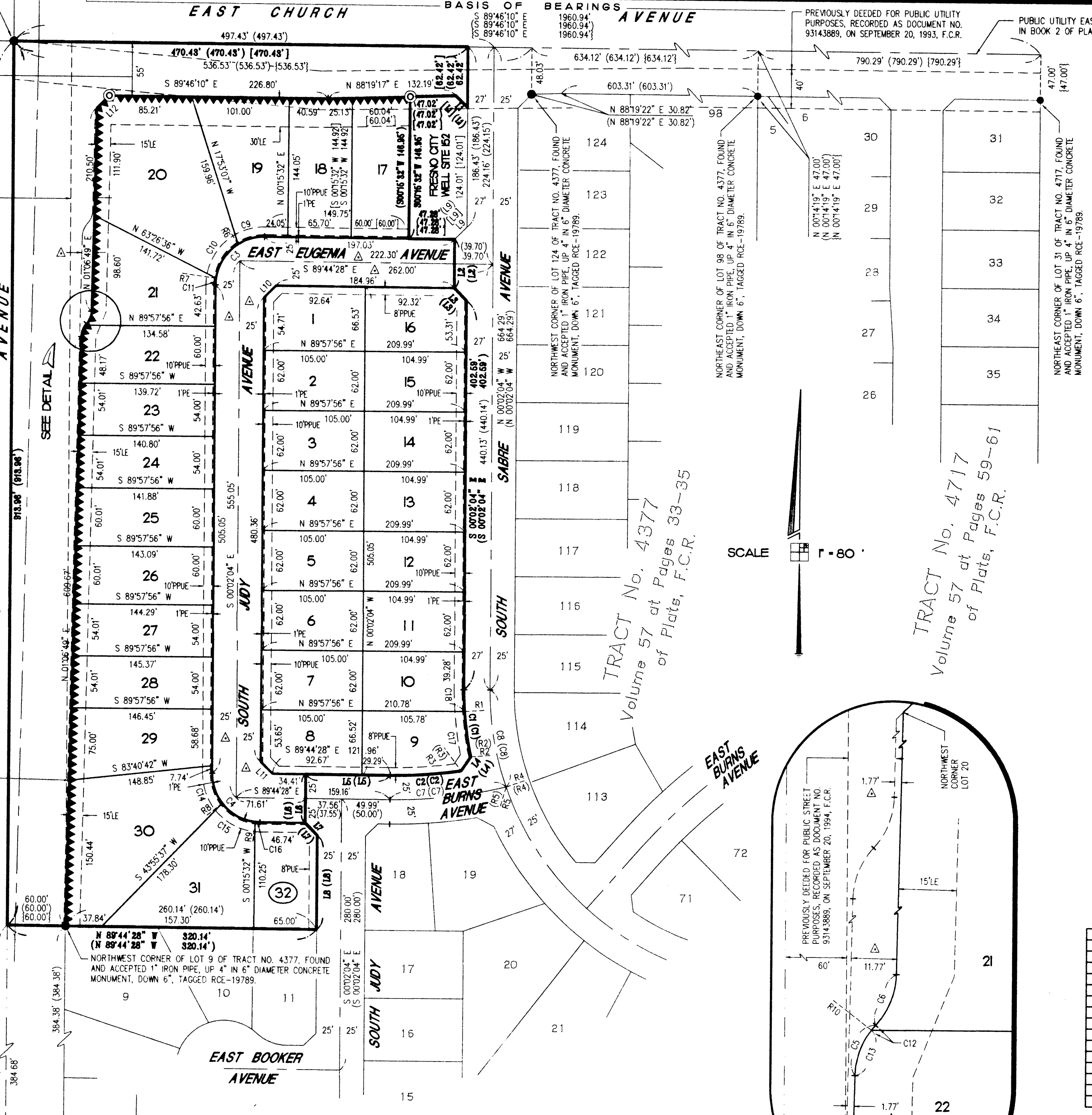
PREVIOUSLY DEEDED FOR PUBLIC STREET PURPOSES, RECORDED AS DOCUMENT NO. 93143889, ON SEPTEMBER 20, 1994, F.C.R.

PREVIOUSLY DEEDED FOR PUBLIC STREET PURPOSES, RECORDED AS DOCUMENT NO. 93143889, ON SEPTEMBER 20, 1994, F.C.R.

PRECISE PLAN LINE FOR CLOVIS AVENUE, RECORDED AUGUST 30, 1982, IN BOOK 4736 PAGE 676 OF OFFICIAL RECORDS, AND IN BOOK 22 PAGES 77 THROUGH 95 OF PRECISE PLAN LINES.

PRECISE PLAN LINE FOR CLOVIS AVENUE, RECORDED AUGUST 30, 1982, IN BOOK 4736 PAGE 676 OF OFFICIAL RECORDS, AND IN BOOK 22 PAGES 77 THROUGH 95 OF PRECISE PLAN LINES.

SOUTHWEST CORNER OF LOT 1 OF TRACT NO. 4377, FOUND AND ACCEPTED CHISELED CROSS ON CONCRETE SIDEWALK.



**DETAIL**  
SCALE: 1" = 20'

# MAP OF TRACT NO. 4760

PHASE III OF TRACT NO. 4377  
IN THE CITY OF FRESNO  
FRESNO COUNTY, CALIFORNIA  
SURVEYED AND PLATTED IN FEBRUARY, 1992  
BY EDWARD D. DUNKEL AND ASSOCIATES

CONSISTING OF TWO SHEETS  
SHEET 2 OF 2 SHEETS

### BASIS OF BEARINGS

THE NORTH LINE OF THE SOUTHWEST QUARTER OF SECTION 16, T.14 S., R.21 E., M.D.B. & M. WAS TAKEN TO BE S 89°46'10" E, AS SHOWN ON TRACT NO. 4377, RECORDED IN VOLUME 57 OF PLATS AT PAGES 33, 34, AND 35, F.C.R.

### LEGEND

- EXISTING MONUMENT FOUND AND ACCEPTED OR NOT ACCEPTED AS NOTED.
- ⊙ SET 1" O.D. IRON PIPE, 30" LONG, UP 4", IN 6" DIA. x 30" CONCRETE MONUMENT DOWN 6" AND TAGGED RCE-19789, EXCEPT AS NOTED.
- ( ) RECORD DATA PER TRACT NO. 4377, AS RECORDED IN VOLUME 57 OF PLATS AT PAGES 33-35, F.C.R.
- { } RECORD DATA PER TRACT NO. 4717, AS RECORDED IN VOLUME 57 OF PLATS AT PAGES 59-61, O.R.F.C.
- [ ] RECORD DATA PER DEED OF WELL SITE NO. 152, AS RECORDED AS DOCUMENT NO. 94014650, ON JANUARY 28, 1994, F.C.R.
- T.O.F. TIES ON FILE WITH FRESNO COUNTY SURVEYOR.
- PE PEDESTRIAN EASEMENT NOW OFFERED FOR DEDICATION FOR PUBLIC USE.
- PPUE PLANTING AND PUBLIC UTILITY EASEMENT NOW OFFERED FOR DEDICATION FOR PUBLIC USE.
- LE LANDSCAPE EASEMENT NOW OFFERED FOR DEDICATION FOR PUBLIC USE.
- ▲▲▲▲ INDICATES RELINQUISHMENT OF DIRECT VEHICULAR ACCESS RIGHTS.
- BLUE BORDER INDICATES THE LIMITS OF THIS SUBDIVISION.
- INDICATES PORTIONS NOW OFFERED FOR DEDICATION FOR PUBLIC STREET PURPOSES.
- INDICATES PREVIOUS DEDICATIONS FOR PUBLIC STREET PURPOSES. PER MAP TRACT NO. 4377, RECORDED IN VOLUME 57 AT PAGES 33-35 OF PLATS, F.C.R.
- \* NOTE \*
- 1" O.D. x 30" LONG IRON PIPE TO BE SET 6" DOWN AND TAGGED RCE-19789, AT ALL LOT CORNERS, ANGLE POINTS, BEGINNING OF CURVES AND END OF CURVES, OR AS NOTED WITHIN THE TIME SPECIFIED IN THE SUBDIVISION AGREEMENT FOR THIS TRACT.

RADIAL	DIRECTION
R1	S 85°58'54" W
(R1)	S 85°58'54" W
R2	S 77°41'55" W
(R2)	(S 77°41'55" W)
R3	S 08°36'43" E
(R3)	(S 08°36'43" E)
R4	S 70°25'03" W
(R4)	(S 70°25'03" W)
R5	S 13°38'04" E
(R5)	(S 13°38'04" E)
R6	S 32°36'55" W
(R6)	(S 32°36'55" W)
R7	S 82°04'32" W
(R7)	(S 82°04'32" W)
R8	S 51°53'58" W
(R8)	(S 51°53'58" W)
R9	S 06°00'43" W
(R9)	(S 06°00'43" W)
R10	N 52°18'04" W

LINE	DIRECTION	DISTANCE
L1	N 45°54'41" W	17.06
(L1)	(N 45°54'41" W)	(17.06)
L2	S 00°04'26" E	50.00
(L2)	(S 00°04'26" E)	(50.00)
L3	S 44°52'46" E	17.98
(L3)	(S 44°52'46" E)	(17.98)
L4	S 34°05'08" W	17.64
(L4)	(S 34°05'08" W)	(17.64)
L5	N 89°44'28" W	87.55
(L5)	(N 89°44'28" W)	(87.55)
L6	S 00°15'32" W	50.00
(L6)	(S 00°15'32" W)	(50.00)
L7	S 44°53'01" E	17.98
(L7)	(S 44°53'01" E)	(17.98)
L8	S 00°02'04" E	97.32
(L8)	(S 00°02'04" E)	(97.32)
L9	S 45°07'31" W	17.93
(L9)	(S 45°07'31" W)	(17.93)
L10	S 45°06'44" W	17.43
(L10)	(S 45°06'44" W)	(17.43)
L11	N 45°36'45" E	17.95
(L11)	(N 45°36'45" E)	(17.95)
L12	N 45°36'45" E	17.95

CURVE	RADIUS	LENGTH	CHORD	DELTA
C1	327.00'	70.01'	69.88'	12°16'01"
(C1)	(327.00')	(70.01')	(69.88')	(12°16'01")
C2	475.00'	73.54'	73.47'	06°52'15"
(C2)	(475.00')	(73.54')	(73.47')	(06°52'15")
C3	50.00'	78.80'	70.89'	90°17'36"
C4	50.00'	78.28'	70.53'	89°42'24"
C5	20.00'	14.45'	14.14'	41°24'35"
C6	20.00'	14.45'	14.14'	41°24'35"
C7	500.00'	121.24'	120.95'	13°53'36"
(C7)	(500.00')	(121.23')	(120.94')	(13°53'33")
C8	300.00'	102.35'	101.86'	19°32'53"
(C8)	(300.00')	(102.35')	(101.85')	(19°32'50")
C9	50.00'	28.69'	28.30'	32°52'27"
C10	50.00'	43.16'	41.83'	49°27'57"
C11	50.00'	6.95'	6.94'	07°57'32"
C12	20.00'	1.68'	1.68'	04°49'28"
C13	20.00'	12.77'	12.55'	36°35'07"
C14	50.00'	33.22'	32.61'	38°03'58"
C15	50.00'	40.04'	38.98'	45°53'15"
C16	50.00'	5.02'	5.02'	05°45'11"
C17	327.00'	47.27'	47.23'	06°16'59"
C18	327.00'	22.74'	22.73'	03°59'02"

**REVISIONS**  
04/14/97-DH-1