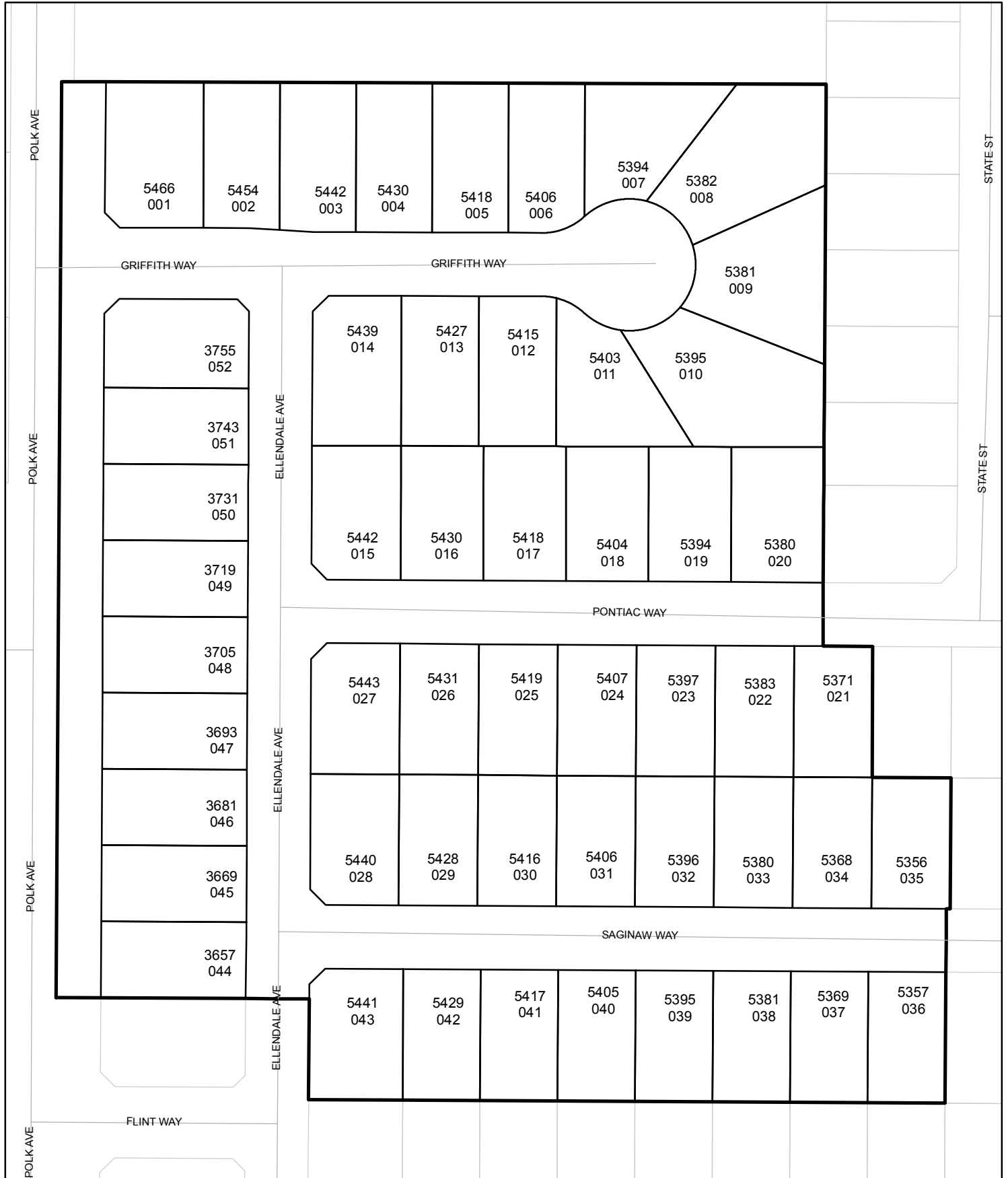




# Street Names, Addresses and (Lot Numbers) for T4743

Prepared on Thu Oct 18 01:13:32 2018



# MAP OF TRACT NO. 4743 THOMASVILLE ESTATES V

PHASE 2 OF TENTATIVE TRACT MAP NO. 4473  
 IN THE CITY OF FRESNO, COUNTY OF FRESNO, STATE OF CALIFORNIA  
 PLATTED IN AUGUST 1998 BY LARS ANDERSEN AND ASSOCIATES, INC.  
 CONSISTING OF THREE SHEETS SHEET 3 OF 3 SHEETS

## BASIS OF BEARINGS

THE WEST LINE OF THE NORTHEAST QUARTER OF SECTION 22, TOWNSHIP 13 SOUTH, RANGE 19 EAST, MOUNT DIABLO BASE AND MERIDIAN IS TAKEN TO BE NORTH 00°01'45" EAST AS SHOWN ON THE MAP OF TRACT NO. 4473 AS RECORDED IN VOLUME 58 OF PLATS AT PAGES 33 THROUGH 36, INCLUSIVE, FRESNO COUNTY RECORDS.

## LEGEND

- FOUND AND ACCEPTED 3/4" IRON PIPE, 6" DOWN WITH TAG LS 7010 OR AS NOTED.
- ⊙ FOUND AND ACCEPTED 3/4" x 30" IRON PIPE, UP 4" IN 6" DIAMETER x 30" P.C.C. MONUMENT, 6" DOWN, WITH TAG LS 7010 OR AS NOTED.
- ⊙ SET 3/4" x 30" IRON PIPE, UP 4" IN 6" DIAMETER x 30" P.C.C. MONUMENT, 6" DOWN WITH TAG LS 6391 OR AS NOTED.
- M-1 FOUND 3/4" IRON PIPE IN CONCRETE, DOWN 1.0', TAGGED RCE 26996. ACCEPTED AS THE SOUTHWEST CORNER OF PARCEL 2 OF PARCEL MAP NO. 1674, BOOK 10 OF PARCEL MAPS AT PAGE 70, F.C.R. AND THE SOUTHWEST CORNER OF LOT 16 OF TRACT NO. 3885, VOLUME 46 OF PLATS AT PAGES 7 AND 8, F.C.R.
- M-2 FOUND 3/4" IRON PIPE, DOWN 6", NO TAG. ACCEPTED AS THE NORTHWEST CORNER OF PARCEL 2 OF PARCEL MAP NO. 1674, BOOK 10 OF PARCEL MAPS AT PAGE 70, F.C.R.
- M-3 FOUND 3/4" IRON PIPE, DOWN 6", NO TAG. ACCEPTED AS THE SOUTHWEST CORNER OF PARCEL 2 OF PARCEL MAP NO. 1674, BOOK 10 OF PARCEL MAPS AT PAGE 70, F.C.R.
- ▲▲▲ RELINQUISHMENT OF DIRECT ACCESS RIGHTS.
- Ⓢ CURVE DATA NUMBER - SEE CURVE DATA TABLE.
- △ AREA NOW OFFERED FOR DEDICATION FOR PUBLIC STREET PURPOSES.
- ▲ AREA PREVIOUSLY DEDICATED FOR PUBLIC STREET PURPOSES PER MAP OF TRACT NO. 4473, VOLUME 58 OF PLATS AT PAGES 33 THROUGH 36, INCLUSIVE, F.C.R.
- LE LANDSCAPE EASEMENT NOW OFFERED FOR DEDICATION FOR PUBLIC USE.
- PE PEDESTRIAN EASEMENT NOW OFFERED FOR DEDICATION FOR PUBLIC USE.
- PUE PUBLIC UTILITIES EASEMENT NOW OFFERED FOR DEDICATION FOR PUBLIC USE.
- PPUE PLANTING AND PUBLIC UTILITIES EASEMENT NOW OFFERED FOR DEDICATION FOR PUBLIC USE.
- (R) INDICATES RADIAL BEARING.
- E1 RIGHT OF WAY PREVIOUSLY GRANTED TO THE COUNTY OF FRESNO FOR PUBLIC ROAD PURPOSES MAY 4, 1911 - BOOK 477 PAGE 203 OF DEEDS AS DOCUMENT NO. 7834, O.R.F.C.
- E2 EASEMENT PREVIOUSLY DEEDED TO THE CITY OF FRESNO FOR PUBLIC STREET PURPOSES MARCH 6, 1995 - AS DOCUMENT NO. 95028048, O.R.F.C.
- E3 EASEMENT PREVIOUSLY GRANTED TO THE COUNTY OF FRESNO FOR PUBLIC ROAD PURPOSES DECEMBER 5, 1973 - BOOK 6241 PAGE 637 OF DEEDS AS DOCUMENT NO. 105467, O.R.F.C.
- THE SHADED BLUE BORDER INDICATES THE LIMITS OF THIS SUBDIVISION.

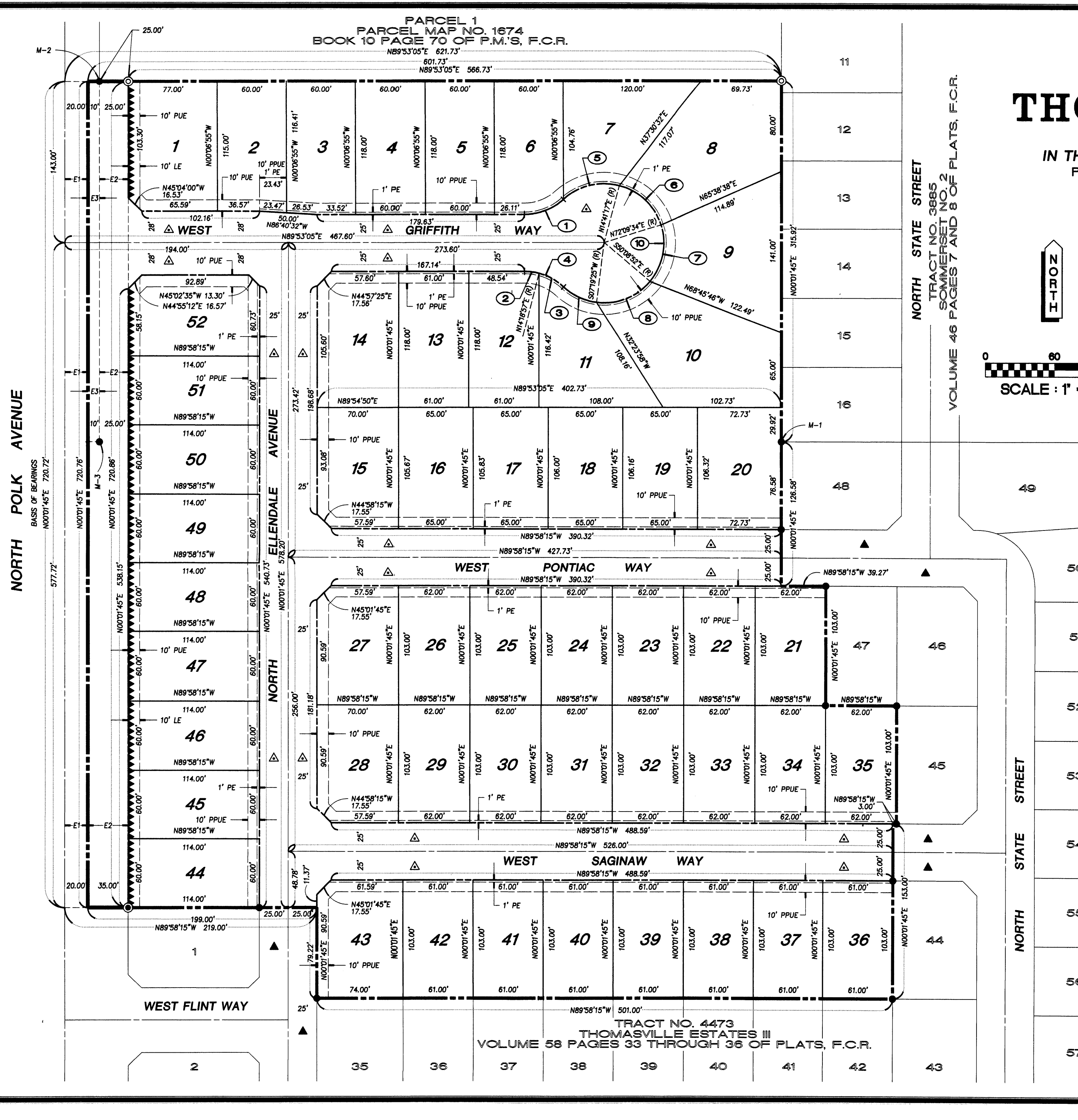
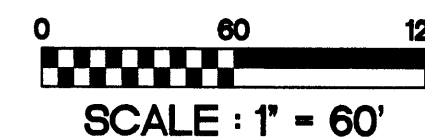
## NOTES

### THIS PROPERTY IS SUBJECT TO THE FOLLOWING CONDITIONS:

1. ALL BLOCK CORNERS, LOT CORNERS, ANGLE POINTS AND CURVE POINTS ARE MARKED WITH 3/4" x 30" IRON PIPE, SET 6" DOWN WITH TAG LS 6391 UNLESS OTHERWISE NOTED.
2. A COVENANT AND AGREEMENT BETWEEN BUTLER-ROCCA I AND THE CITY OF FRESNO REGARDING THE RIGHT TO FARM - RECORDED MARCH 24, 1995 AS DOCUMENT NO. 95036313 O.R.F.C.

## CURVE DATA TABLE

NO.	DELTA	RADIUS	LENGTH	CHORD	TANGENT
1	42°40'05"	50.00'	37.23'	36.38'	19.53'
2	14°25'52"	50.00'	12.59'	12.56'	6.33'
3	28°14'13"	50.00'	24.64'	24.39'	12.58'
4	42°40'05"	50.00'	37.23'	36.38'	19.53'
5	57°28'17"	52.00'	52.16'	50.00'	28.51'
6	57°28'17"	52.00'	52.16'	50.00'	28.51'
7	57°41'34"	52.00'	52.36'	50.18'	28.64'
8	57°28'17"	52.00'	52.16'	50.00'	28.51'
9	35°13'45"	52.00'	31.97'	31.47'	16.51'
10	265°20'10"	52.00'	240.81'	76.47'	56.42'



TRACT NO. 4473 THOMASVILLE ESTATES III VOLUME 58 PAGES 33 THROUGH 36 OF PLATS, F.C.R.

NORTH POLK AVENUE  
BASIS OF BEARINGS  
N00°01'45"E 720.72'  
N00°01'45"E 720.76'  
N00°01'45"E 720.86'  
N00°01'45"E 538.15'  
N00°01'45"E 577.72'

NORTH STATE STREET  
TRACT NO. 3885  
SOMMERSET NO. 2  
VOLUME 46 PAGES 7 AND 8 OF PLATS, F.C.R.

PARCEL 1  
 PARCEL MAP NO. 1674  
 BOOK 10 PAGE 70 OF P.M.'S, F.C.R.  
 N89°53'05"E 621.73'  
 601.73'  
 N89°53'05"E 566.73'

TRACT NO. 4473  
 THOMASVILLE ESTATES III  
 VOLUME 58 PAGES 33 THROUGH 36 OF PLATS, F.C.R.