



Prepared on Thu Oct 18 01:13:53 2018

Street Names, Addresses and (Lot Numbers) for T4742



66

NOTES

- THIS PROPERTY IS SUBJECT TO THE FOLLOWING CONDITIONS:
- ALL BLOCK CORNERS, LOT CORNERS, ANGLE POINTS AND CURVE POINTS ARE MARKED WITH 3/4" x 30" IRON PIPE, SET 6" DOWN WITH TAG L.S. 7010 UNLESS OTHERWISE NOTED.
 - OUTLOT "B" IS FOR INGRESS AND EGRESS, LANDSCAPING AND OPEN SPACE.
 - OUTLOT "B" IS NOW OFFERED FOR DEDICATION FOR PUBLIC UTILITY PURPOSES.
 - AN AGREEMENT FOR EARLY ISSUANCE OF BUILDING PERMIT RECORDED DECEMBER 7, 1995 AS DOCUMENT NO. 95157139, D.R.F.C.

BASIS OF BEARINGS

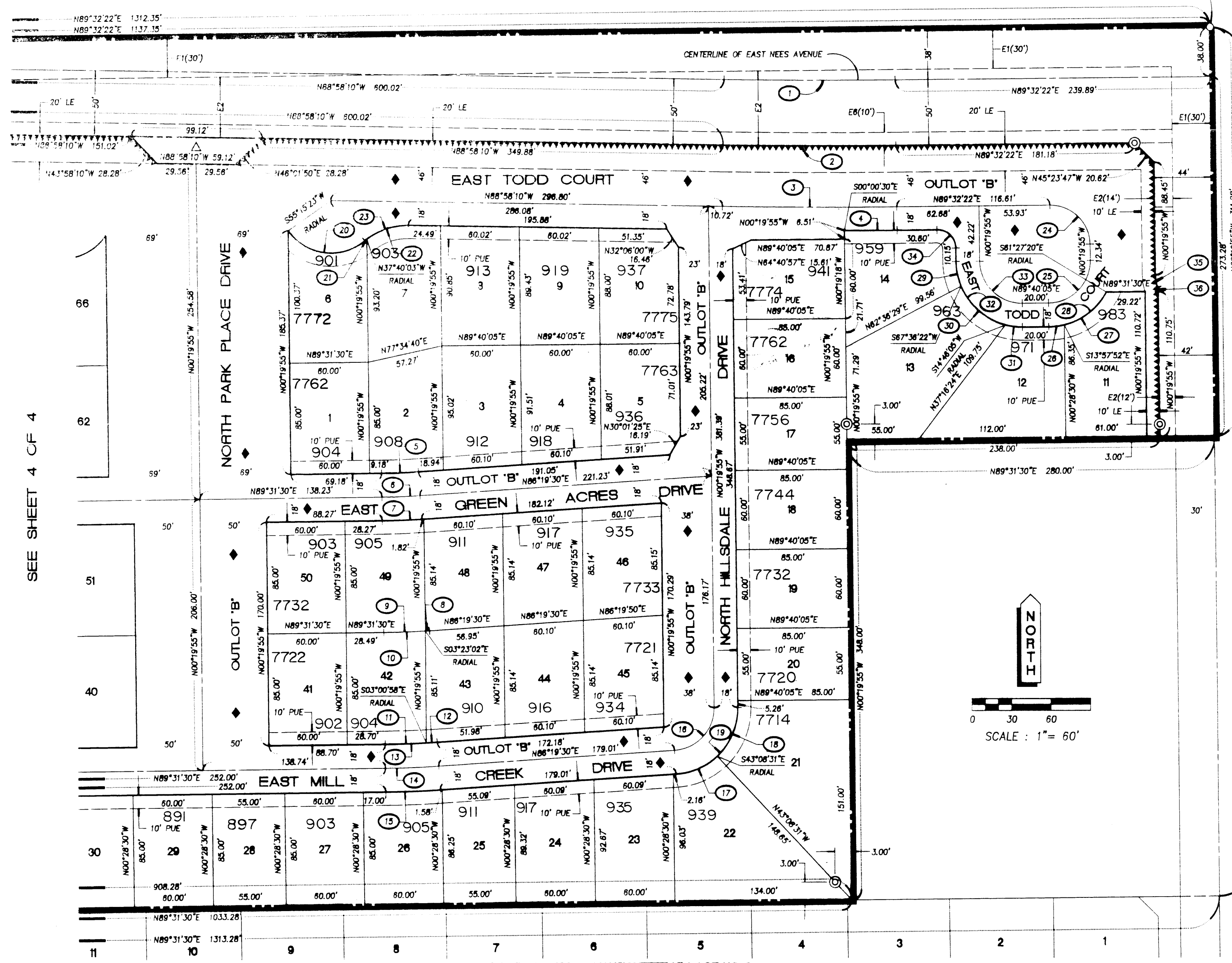
THE EAST LINE OF THE NORTHEAST QUARTER OF SECTION 34, TOWNSHIP 12 SOUTH, RANGE 20 EAST, MOUNT DIABLO BASE AND MERIDIAN AS SHOWN ON THE MAP OF TRACT NO. 3460 MANSIONETTE VILLAGE NO. 2, RECORDED IN VOLUME 41 OF PLATS AT PAGES 24 AND 25, FRESNO COUNTY RECORDS TAKEN TO BE NORTH 00°19'55" WEST.

THE NORTHEAST CORNER OF SECTION 34, T.12 S., R.20 E., M.D.B. & M. NOTHING FOUND - DESTROYED BY CONSTRUCTION. POSITION RE-ESTABLISHED FROM THE PERM CORNER RECORD NO. 5381, SET 3/4" x 30" IRON PIPE, FLUSH IN PAVEMENT, WITH TAG LS 7010.

MAP OF
TRACT NO. 4742
NEES PARK PLACE

A PLANNED DEVELOPMENT
IN THE CITY OF FRESNO, COUNTY OF FRESNO, STATE OF CALIFORNIA
PLATTED IN SEPTEMBER 1995 BY LARS ANDERSEN AND ASSOCIATES, INC.
CONSISTING OF FOUR SHEETS SHEET 3 OF 4 SHEETS

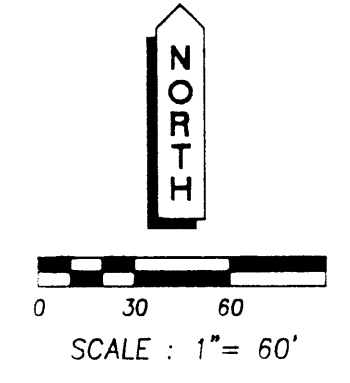
EAST NEES AVENUE



LEGEND

- MONUMENT FOUND AND ACCEPTED AS NOTED.
- ⊙ SET 3/4" x 30" IRON PIPE, UP 1" IN 6" DIAMETER x 30" P.C.C. MONUMENT, 6" DOWN WITH TAG L.S. 7010 OR AS NOTED.
- SET MONUMENT AS NOTED.
- ◇ INDICATES AREA NOW OFFERED FOR DEDICATION FOR PUBLIC STREET PURPOSES.
- ▲ INDICATES AREA NOW OFFERED FOR DEDICATION FOR PUBLIC UTILITY PURPOSES.
- ▲▲▲ INDICATES RELINQUISHMENT OF DIRECT ACCESS RIGHTS.
- Ⓢ CURVE DATA NUMBER - SEE CURVE DATA TABLE.
- E1 30' PREVIOUSLY DEDICATED TO THE COUNTY OF FRESNO FOR PUBLIC ROAD PURPOSES PER THE AMENDED MAP OF PERRIN COLONY NO. 2 - VOLUME 4 OF PLATS AT PAGE 68, F.C.R.
- E2 AN EASEMENT GRANTED TO THE CITY OF FRESNO FOR PUBLIC STREET PURPOSES BY FINAL ORDER OF CONDEMNATION RECORDED NOVEMBER 30, 1993 AS DOCUMENT NO. 93187030 D.R.F.C.
- E6 AN EASEMENT GRANTED TO THE PACIFIC BELL CORPORATION FOR UNDERGROUND COMMUNICATION FACILITIES - JUNE 8, 1989 AS DOCUMENT NO. 89060387 D.R.F.C.
- LE LANDSCAPE EASEMENT NOW OFFERED FOR DEDICATION FOR PUBLIC USE.
- PUE PUBLIC UTILITY EASEMENT NOW OFFERED FOR DEDICATION FOR PUBLIC USE.
- THE SHADED BLUE BORDER INDICATES THE LIMITS OF THIS SUBDIVISION.

CURVE DATA TABLE					CURVE DATA TABLE						
NO.	DELTA	RADIUS	LENGTH	CHORD	TANGENT	NO.	DELTA	RADIUS	LENGTH	CHORD	TANGENT
1	01°29'28"	5000.00'	130.12'	130.12'	65.07'	19	86°39'25"	50.00'	75.62'	68.62'	47.16'
2	01°29'28"	5050.00'	131.43'	131.42'	65.72'	20	95°09'07"	40.00'	66.43'	59.05'	43.77'
3	01°29'28"	5098.00'	132.62'	132.62'	66.31'	21	02°13'41"	50.00'	1.94'	1.94'	0.97'
4	00°27'08"	5114.00'	40.36'	40.36'	20.18'	22	38°41'53"	50.00'	33.77'	33.13'	17.58'
5	03°12'00"	500.00'	27.93'	27.92'	13.97'	23	40°55'34"	50.00'	35.71'	34.96'	18.66'
6	03°12'00"	518.00'	28.93'	28.93'	14.47'	24	90°07'43"	30.00'	47.19'	42.47'	30.07'
7	03°12'00"	538.00'	28.94'	28.93'	14.97'	25	90°00'00"	32.00'	50.27'	45.25'	32.00'
8	00°17'28"	621.00'	3.15'	3.15'	1.58'	26	13°37'57"	50.00'	11.90'	11.87'	5.98'
9	02°54'32"	621.00'	31.53'	31.53'	15.77'	27	47°29'28"	50.00'	41.44'	40.27'	22.00'
10	03°12'00"	621.00'	34.68'	34.68'	17.35'	28	61°07'25"	50.00'	53.34'	50.85'	29.52'
11	02°32'28"	708.00'	31.31'	31.31'	15.66'	29	22°03'43"	50.00'	19.25'	19.13'	9.75'
12	00°39'32"	708.00'	8.12'	8.12'	4.06'	30	52°50'17"	50.00'	46.11'	44.49'	24.84'
13	03°12'00"	708.00'	39.43'	39.43'	19.72'	31	15°06'00"	50.00'	13.18'	13.14'	6.63'
14	03°12'00"	724.00'	40.44'	40.43'	20.22'	32	90°00'00"	50.00'	78.54'	70.71'	50.00'
15	03°12'00"	742.00'	41.44'	41.44'	20.73'	33	90°00'00"	32.00'	50.27'	45.25'	32.00'
16	86°39'25"	32.00'	48.40'	43.92'	30.19'	34	90°07'43"	14.00'	22.02'	19.82'	14.03'
17	39°28'01"	50.00'	34.44'	33.78'	17.94'	35	18°11'42"	30.00'	9.53'	9.49'	4.80'
18	47°11'24"	50.00'	41.18'	40.03'	21.84'	36	18°11'42"	10.00'	3.18'	3.18'	1.60'



SEE SHEET 4 OF 4

TRACT NO. 3460 - MANSIONETTE VILLAGE NO. 2
VOLUME 41 OF PLATS, PAGES 24 AND 25, F.C.R.

2-22-1996 * 5
2-16-1996 * 4
1-19-1996 * 3
11-17-1995 * 2
9-04-1995 * 1
JOB NO. 94-128
DATABASE: 4742MP3.DWG

NOTES

- THIS PROPERTY IS SUBJECT TO THE FOLLOWING CONDITIONS:**
- ALL BLOCK CORNERS, LOT CORNERS, ANGLE POINTS AND CURVE POINTS ARE MARKED WITH 3/4" x 30" IRON PIPE, SET 6" DOWN WITH TAG L.S. 7010 UNLESS OTHERWISE NOTED.
 - OUTLOT "A" IS FOR LANDSCAPING AND OPEN SPACE PURPOSES.
 - OUTLOT "B" IS FOR INGRESS AND EGRESS, LANDSCAPING AND OPEN SPACE.
 - OUTLOT "B" IS NOW OFFERED FOR DEDICATION FOR PUBLIC UTILITY PURPOSES.
 - AN AGREEMENT FOR EARLY ISSUANCE OF BUILDING PERMIT RECORDED DECEMBER 7, 1995 AS DOCUMENT NO. 95157139, O.R.F.C.

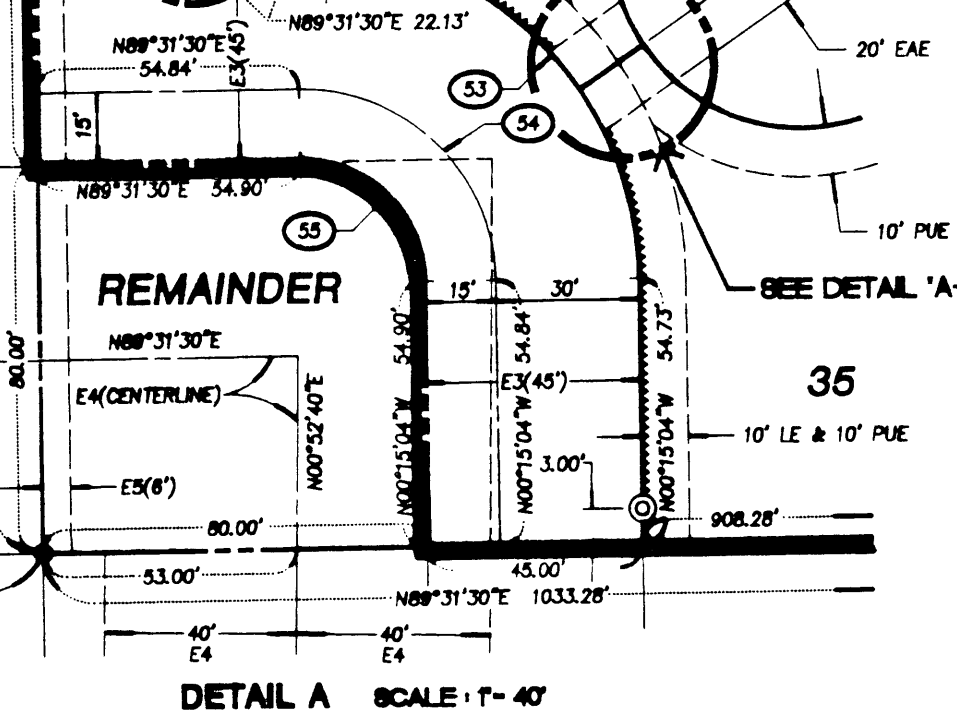
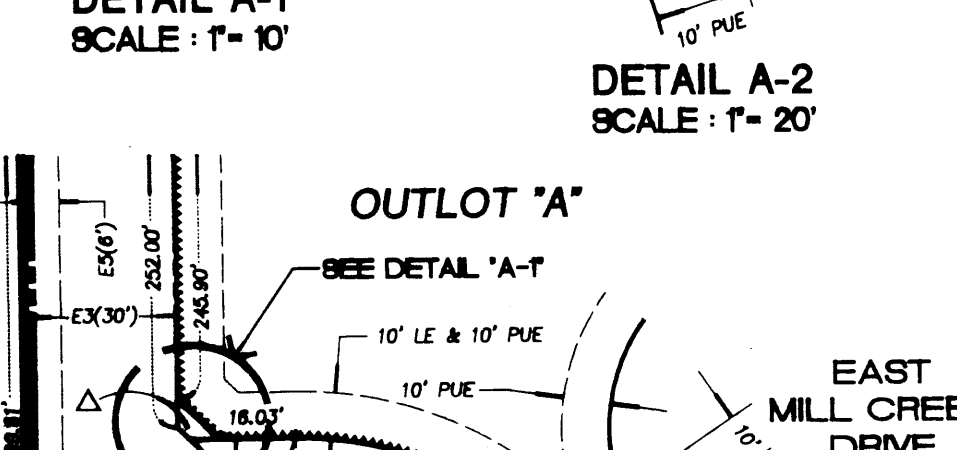
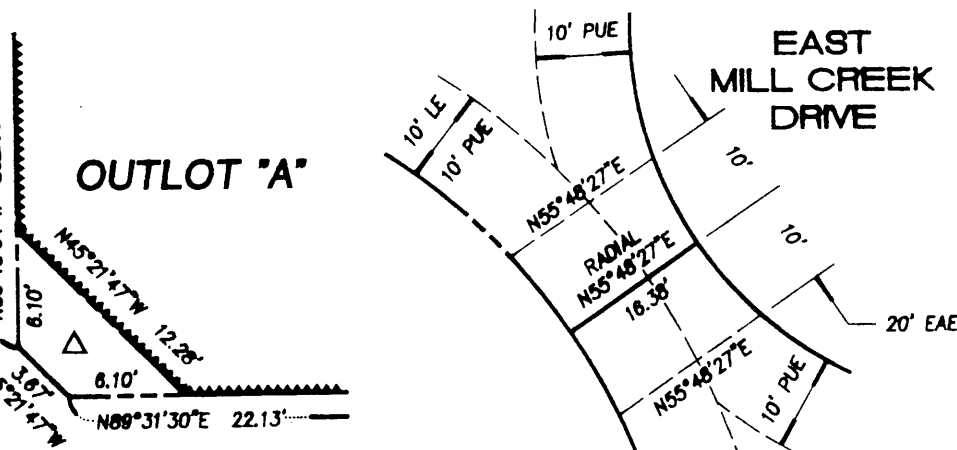
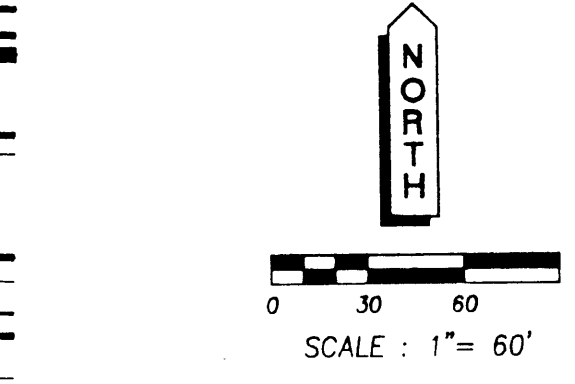
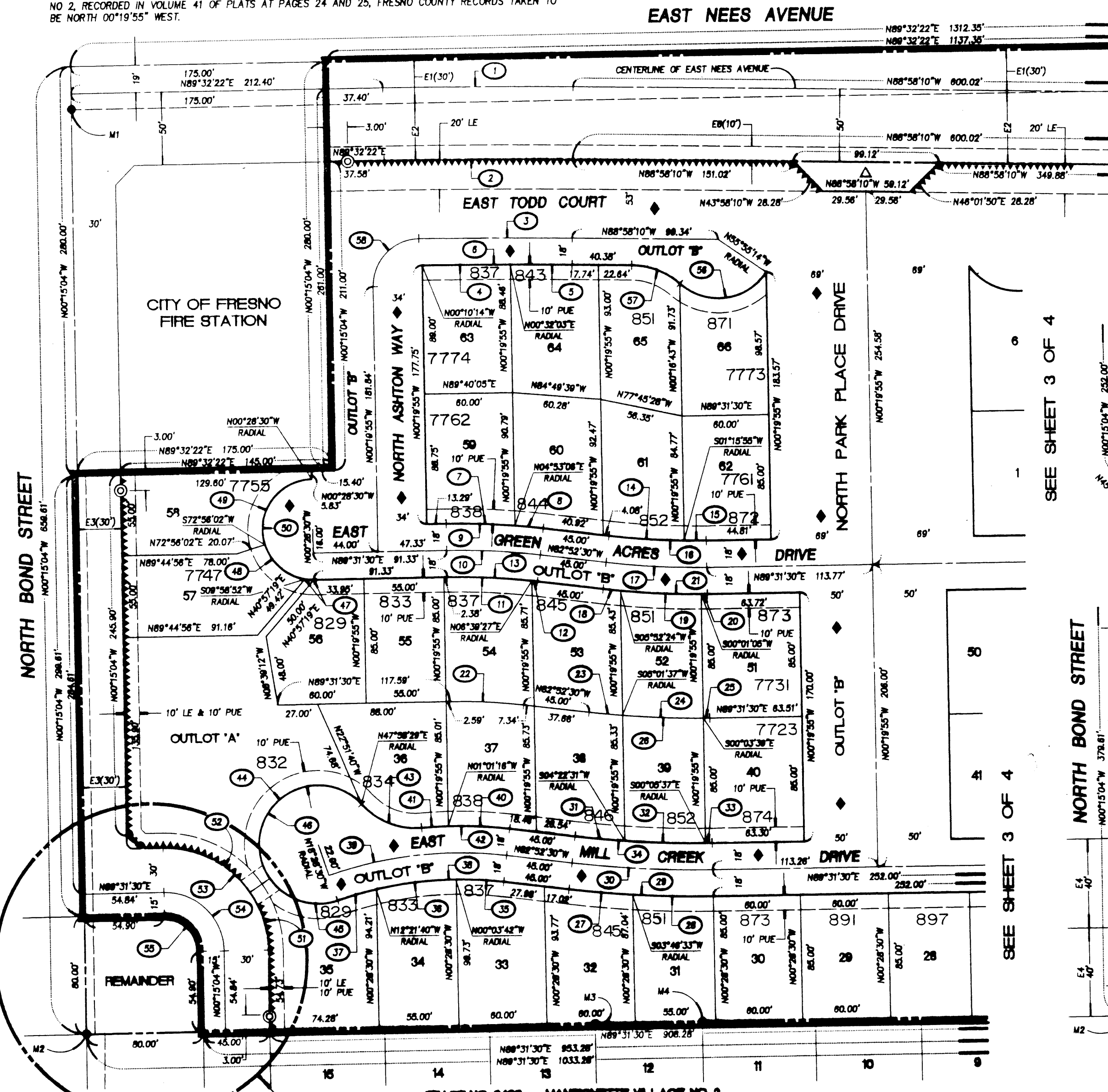
BASIS OF BEARINGS

THE EAST LINE OF THE NORTHEAST QUARTER OF SECTION 34, TOWNSHIP 12 SOUTH, RANGE 20 EAST, MOUNT Diablo BASE AND MERIDIAN AS SHOWN ON THE MAP OF TRACT NO. 3460 MANSIONETTE VILLAGE NO. 2, RECORDED IN VOLUME 41 OF PLATS AT PAGES 24 AND 25, FRESNO COUNTY RECORDS TAKEN TO BE NORTH 00°19'55" WEST.

MAP OF
TRACT NO. 4742
NEES PARK PLACE

A PLANNED DEVELOPMENT
IN THE CITY OF FRESNO, COUNTY OF FRESNO, STATE OF CALIFORNIA
PLATTED IN SEPTEMBER 1995 BY LARS ANDERSEN AND ASSOCIATES, INC.
CONSISTING OF FOUR SHEETS SHEET 4 OF 4 SHEETS

CURVE DATA TABLE					CURVE DATA TABLE						
NO.	DELTA	RADIUS	LENGTH	TANGENT	NO.	DELTA	RADIUS	LENGTH	TANGENT		
1	01°29'28"	5000.00'	130.12'	130.12'	65.07'	30	07°38'00"	724.00'	96.03'	95.96'	48.09'
2	01°29'28"	4950.00'	128.82'	128.82'	64.42'	31	02°44'59"	708.00'	33.86'	33.86'	16.94'
3	01°13'27"	4897.00'	104.63'	104.62'	52.31'	32	04°28'08"	708.00'	55.07'	55.07'	27.55'
4	00°42'17"	4878.00'	80.00'	80.00'	30.00'	33	00°22'53"	708.00'	4.70'	4.70'	2.35'
5	00°28'47"	4878.00'	42.27'	42.27'	21.14'	34	07°38'00"	708.00'	93.65'	93.65'	46.89'
6	01°12'04"	4878.00'	102.27'	102.27'	51.14'	35	07°11'12"	258.00'	32.38'	32.34'	16.20'
7	05°21'38"	500.00'	46.77'	46.78'	23.40'	36	12°17'56"	258.00'	53.38'	53.38'	27.80'
8	02°14'24"	500.00'	18.55'	18.55'	9.78'	37	08°08'50"	258.00'	27.53'	27.52'	13.78'
9	07°38'00"	500.00'	66.32'	66.27'	33.21'	38	25°38'00"	258.00'	115.27'	114.32'	58.62'
10	07°38'00"	492.00'	63.63'	63.60'	32.01'	39	25°38'00"	278.00'	123.32'	122.29'	62.71'
11	07°07'57"	484.00'	57.78'	57.73'	28.92'	40	08°08'48"	294.00'	41.80'	41.78'	20.94'
12	00°28'03"	484.00'	3.78'	3.78'	1.89'	41	03°34'37"	294.00'	16.35'	16.35'	8.18'
13	07°38'00"	484.00'	61.54'	61.50'	30.82'	42	11°43'23"	294.00'	60.15'	60.05'	30.18'
14	05°51'35"	500.00'	51.14'	51.11'	25.58'	43	52°34'22"	50.00'	45.88'	44.29'	24.70'
15	01°44'25"	500.00'	15.19'	15.19'	7.59'	44	172°10'02"	40.00'	120.20'	79.81'	584.29'
16	07°38'00"	500.00'	66.33'	66.27'	33.21'	45	74°18'57"	40.00'	51.86'	48.30'	30.30'
17	07°38'00"	518.00'	68.71'	68.66'	34.41'	46	248°28'58"	40.00'	172.08'	88.92'	61.07'
18	01°15'08"	536.00'	11.71'	11.71'	5.86'	47	10°27'22"	34.00'	6.20'	6.20'	3.11'
19	00°53'29"	536.00'	55.11'	55.09'	27.56'	48	62°59'10"	34.00'	37.36'	35.51'	26.82'
20	00°27'25"	536.00'	4.28'	4.28'	2.14'	49	108°35'28"	34.00'	63.25'	54.58'	45.81'
21	07°38'00"	536.00'	71.10'	71.05'	35.60'	50	180°00'00"	34.00'	106.81'	68.00'	49.84'
22	07°38'00"	578.00'	50.27'	50.24'	25.17'	51	33°58'59"	70.00'	41.47'	40.86'	21.38'
23	02°06'13"	621.00'	22.80'	22.80'	11.40'	52	58°18'57"	70.00'	68.78'	68.03'	37.44'
24	05°04'56"	621.00'	55.08'	55.07'	27.86'	53	90°13'28"	70.00'	110.23'	88.19'	70.27'
25	00°24'51"	621.00'	4.48'	4.48'	2.24'	54	90°13'28"	40.00'	82.98'	58.68'	40.18'
26	07°38'00"	621.00'	62.37'	62.31'	31.28'	55	90°13'28"	25.00'	38.37'	35.42'	25.10'
27	03°20'57"	742.00'	43.37'	43.37'	21.68'	56	87°52'37"	40.00'	68.33'	60.32'	45.82'
28	04°15'03"	742.00'	55.05'	55.04'	27.54'	57	40°08'18"	50.00'	35.71'	34.96'	16.88'
29	07°38'00"	742.00'	68.42'	68.35'	34.28'	58	80°08'18"	32.00'	50.34'	45.31'	32.08'



LEGEND

- MONUMENT FOUND AND ACCEPTED AS NOTED.
- ⊙ SET 3/4" x 30" IRON PIPE, UP 4" IN 8" DIAMETER x 30" P.C.C. MONUMENT, 6" DOWN WITH TAG L.S. 7010 OR AS NOTED.
- △ INDICATES AREA NOW OFFERED FOR DEDICATION FOR PUBLIC STREET PURPOSES.
- ◆ INDICATES AREA NOW OFFERED FOR DEDICATION FOR PUBLIC UTILITY PURPOSES.
- ▲▲▲ INDICATES RELINQUISHMENT OF DIRECT ACCESS RIGHTS.
- ⑫ CURVE DATA NUMBER - SEE CURVE DATA TABLE.
- M1 FOUND 3/4" IRON PIPE, FLUSH WITH PAVEMENT, TAGGED LS 5096. ACCEPTED AS THE NORTHWEST CORNER OF LOT 87 OF AMENDED PERRIN COLONY NO. 2.
- M2 FOUND 3/4" IRON PIPE, DOWN 6", TAGGED LS 2928. ACCEPTED AS THE SOUTHWEST CORNER OF LOT 87 OF AMENDED PERRIN COLONY NO. 2.
- M3 FOUND 3/4" IRON PIPE, DOWN 6", TAGGED LS 2928. ACCEPTED AS THE NORTHWEST CORNER OF LOT 12 OF TRACT NO. 3460.
- M4 FOUND 3/4" IRON PIPE, DOWN 6", TAGGED LS 2928. ACCEPTED AS THE NORTHWEST CORNER OF LOT 11 OF TRACT NO. 3460.
- E1 30' PREVIOUSLY DEDICATED TO THE COUNTY OF FRESNO FOR PUBLIC ROAD PURPOSES PER THE AMENDED MAP OF PERRIN COLONY NO. 2 RECORDED IN VOLUME 4 OF PLATS AT PAGE 68, F.C.R.
- E2 AN EASEMENT GRANTED TO THE CITY OF FRESNO FOR PUBLIC STREET PURPOSES BY FINAL ORDER OF CONDEMNATION RECORDED NOVEMBER 30, 1993 AS DOCUMENT NO. 93187030 O.R.F.C.
- E3 AN EASEMENT AND RIGHT OF WAY DEEDED TO THE CITY OF FRESNO FOR PUBLIC STREET PURPOSES RECORDED JULY 23, 1987 AS DOCUMENT NO. 87089550 O.R.F.C.
- E4 AN EASEMENT GRANTED TO THE PACIFIC GAS AND ELECTRIC COMPANY FOR THE TRANSMISSION OF ELECTRICAL ENERGY AND COMMUNICATION PURPOSES RECORDED JANUARY 24, 1958 IN BOOK 4020 AT PAGE 248 AND 247 AS DOCUMENT NO. 8069 O.R.F.C.
- E5 AN EASEMENT RESERVED FOR DITCH PURPOSES IN THE DEED RECORDED JUNE 22, 1907 IN BOOK 387 OF DEEDS AT PAGE 408 AS DOCUMENT NO. 119315 O.R.F.C.
- E6 AN EASEMENT GRANTED TO THE PACIFIC BELL CORPORATION FOR UNDERGROUND COMMUNICATION FACILITIES RECORDED JUNE 8, 1989 AS DOCUMENT NO. 89060387 O.R.F.C.
- EAE EMERGENCY ACCESS EASEMENT NOW OFFERED FOR DEDICATION FOR PUBLIC EMERGENCY INGRESS AND EGRESS PURPOSES.
- LE LANDSCAPE EASEMENT NOW OFFERED FOR DEDICATION FOR PUBLIC USE.
- PUE PUBLIC UTILITY EASEMENT NOW OFFERED FOR DEDICATION FOR PUBLIC USE.
- THE SHADED BLUE BORDER INDICATES THE LIMITS OF THIS SUBDIVISION.

TRACT NO. 3460 - MANSIONETTE VILLAGE NO. 2
VOLUME 41 OF PLATS, PAGES 24 AND 25, F.C.R.

2-22-1996 + 5
2-16-1996 + 4
1-19-1996 + 3
11-17-1995 + 2
9-04-1995 + 1
JOB NO. 94-128
DATABASE: 4742M4.DWG