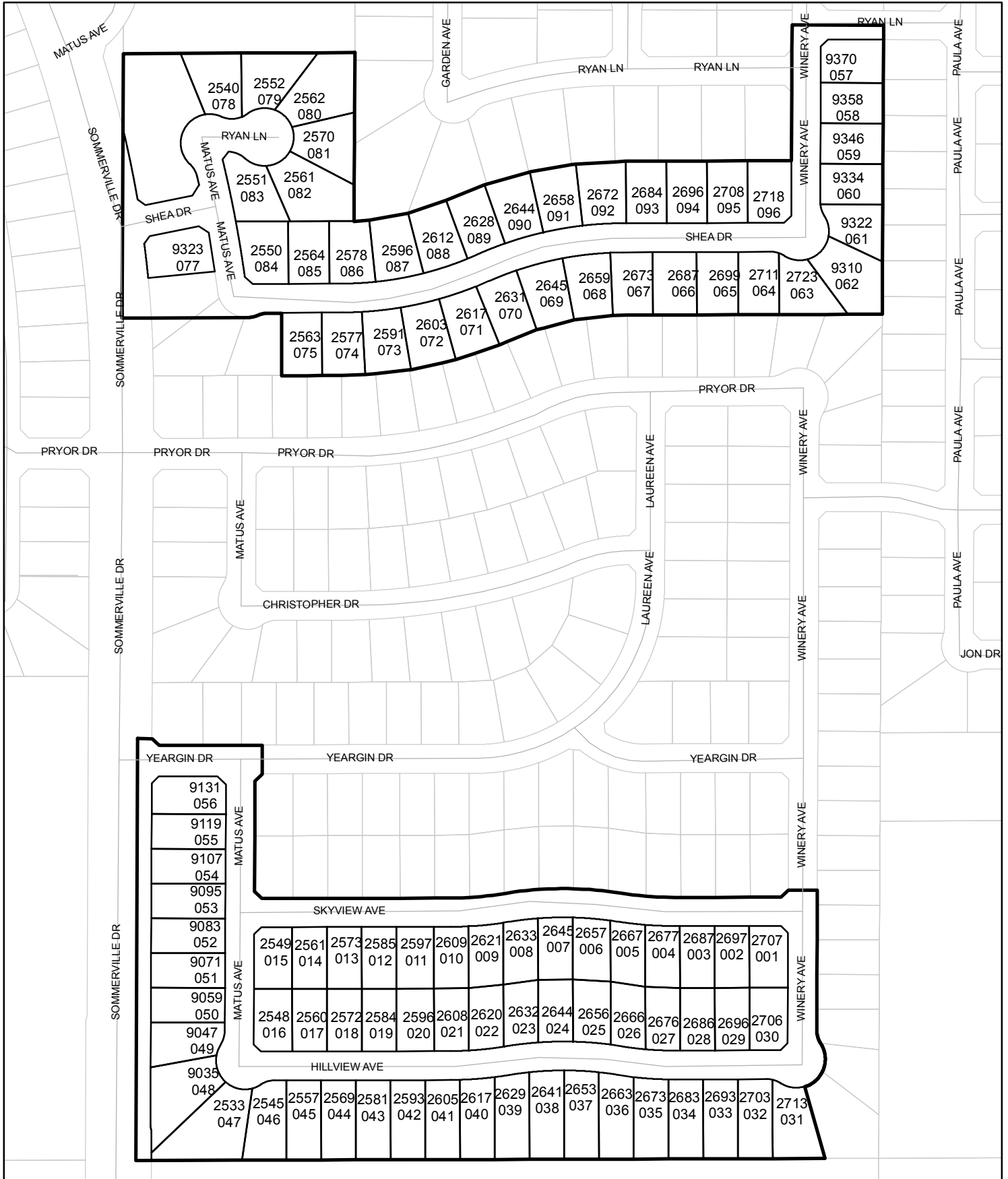




Street Names, Addresses and (Lot Numbers) for T4741

Prepared on Wed Jun 13 22:45:35 2018



MAP OF TRACT NO. 4741

PHASE ONE OF TRACT NO. 4741
 IN THE CITY OF FRESNO
 FRESNO COUNTY, CALIFORNIA
 SURVEYED AND PLATTED IN MAY, 1996
 BY EDWARD D. DUNKEL AND ASSOCIATES

CONSISTING OF FOUR SHEETS
SHEET 2 OF 4 SHEETS

BASIS OF BEARINGS

THE WEST LINE OF THE SOUTHWEST QUARTER OF SECTION 24, T.12 S., R.20 E., M.D.B. & M. WAS TAKEN TO BE N 00°16'30" E, ALSO BEING THE CENTERLINE OF NORTH CHESTNUT AVENUE, PER THE MAP OF TRACT NO. 4362, RECORDED IN VOLUME 54 OF PLATS AT PAGES 23-25, FRESNO COUNTY RECORDS.

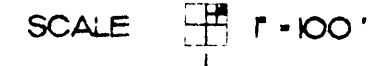
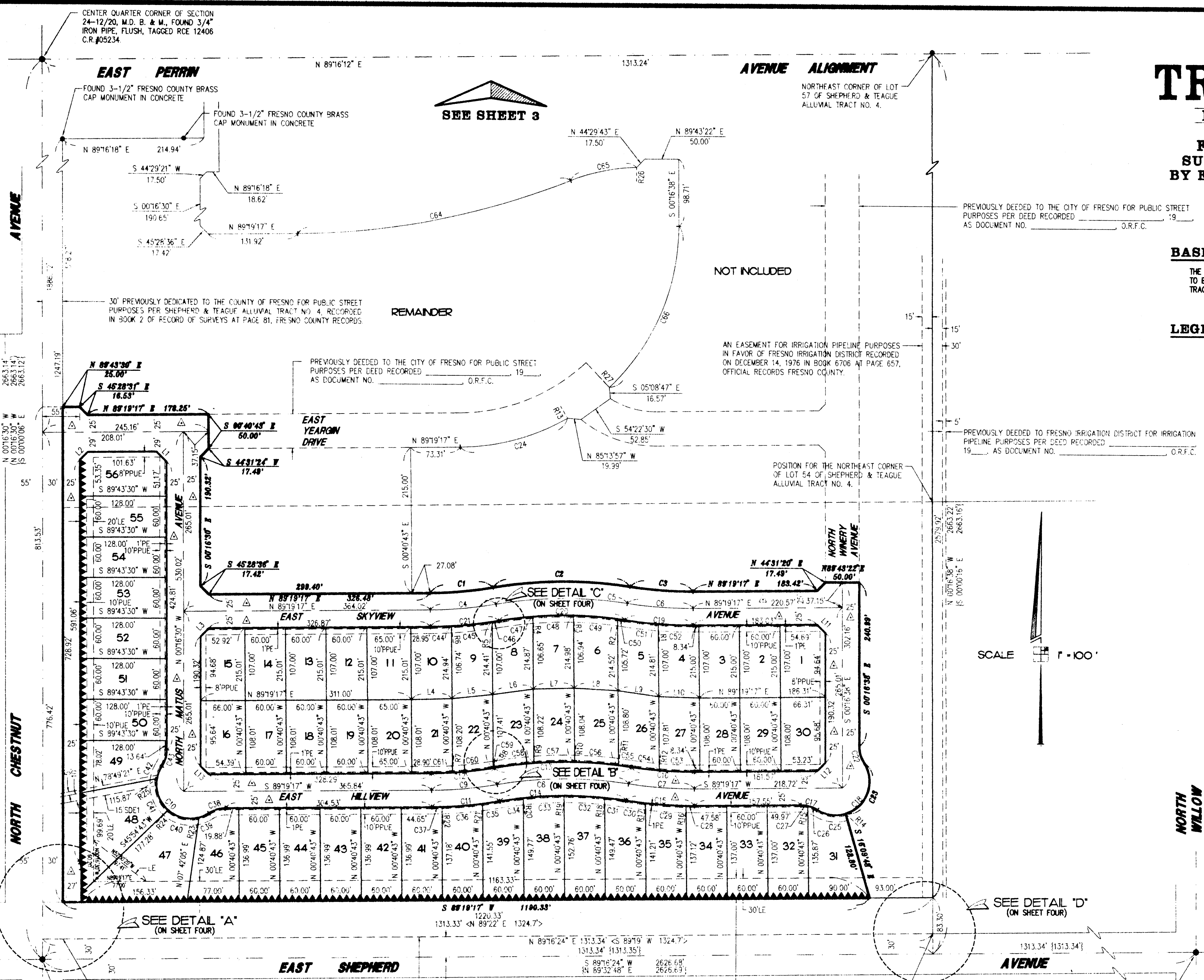
LEGEND

- EXISTING MONUMENT FOUND AND ACCEPTED OR AS NOTED.
- SET 1" O.D. IRON PIPE, DOWN 6" AND TAGGED RCE-19789, EXCEPT AS NOTED.
- ⊙ SET 1" O.D. IRON PIPE, 30" LONG, UP 4", IN 6" DIA. x 30" CONCRETE MONUMENT DOWN 6" AND TAGGED RCE-19789, EXCEPT AS NOTED.
- () PER RECORDED DATA FROM TRACT NO. 4362, RECORDED IN VOLUME 54 OF PLATS AT PAGES 23-25, FRESNO COUNTY RECORDS.
- { } PER RECORDED DATA OF PARCEL MAP NO. 5841, RECORDED IN BOOK 38 OF PARCEL MAPS AT PAGE 2, FRESNO COUNTY RECORDS.
- < > SUGAR PINE LUMBER COMPANY'S RAILROAD RIGHT-OF-WAY PER DEED RECORDED ON APRIL 29, 1922 IN BOOK 199 AT PAGE 297 & 298, OFFICIAL RECORDS FRESNO COUNTY.
- PE. PEDESTRIAN EASEMENT NOW OFFERED FOR DEDICATION FOR PUBLIC USE.
- PPUE. PUBLIC UTILITY EASEMENT NOW OFFERED FOR DEDICATION FOR PUBLIC USE.
- SDE1. STORM DRAIN PIPELINE EASEMENT PREVIOUSLY DEEDED TO FRESNO METROPOLITAN FLOOD CONTROL DISTRICT FOR STORM DRAINAGE PIPELINE PURPOSES PER DEED RECORDED, 199, AS DOCUMENT NO. O.R.F.C.
- SDE2. STORM DRAIN PIPELINE EASEMENT PREVIOUSLY DEEDED TO FRESNO METROPOLITAN FLOOD CONTROL DISTRICT FOR STORM DRAINAGE PIPELINE PURPOSES PER DEED RECORDED, 199, AS DOCUMENT NO. O.R.F.C.
- LE. LANDSCAPE EASEMENT NOW OFFERED FOR DEDICATION FOR PUBLIC USE.
- T.C.F. TIES ON FILE WITH FRESNO COUNTY SURVEYOR'S OFFICE.
- C.R.# CORNER RECORD NUMBER PER FRESNO COUNTY SURVEYOR'S OFFICE.
- ▲▲▲ INDICATES RELINQUISHMENT OF DIRECT ACCESS RIGHTS.
- BLUE BORDER INDICATES THE LIMITS OF THIS SUBDIVISION.
- △ INDICATES PORTIONS NOW OFFERED FOR DEDICATION FOR PUBLIC STREET PURPOSES.

* NOTE *

1" O.D. x 30" LONG IRON PIPE TO BE SET 6" DOWN AND TAGGED RCE-19789, AT ALL LOT CORNERS, ANGLE POINTS, BEGINNING OF CURVES AND END OF CURVES, OR AS NOTED WITHIN THE TIME SPECIFIED IN THE SUBDIVISION AGREEMENT FOR THIS TRACT.

NOTE: SEE SHEET FOUR FOR CURVE, LINE AND RADIAL TABLES AND DETAILS A, B, C, D AND E.



CENTER QUARTER CORNER OF SECTION 24-12/20, M.D.B. & M., FOUND 3/4" IRON PIPE, FLUSH, TAGGED RCE 12406 C.R.#05234.

SEE SHEET 3

SEE DETAIL 'C' (ON SHEET FOUR)

SEE DETAIL 'B' (ON SHEET FOUR)

SEE DETAIL 'D' (ON SHEET FOUR)

SEE DETAIL 'A' (ON SHEET FOUR)

POSITION FOR THE SOUTHWEST CORNER OF LOT 54 OF SHEPHERD & TEAGUE ALLUVIAL TRACT NO. 4.

NORTH QUARTER CORNER OF SECTION 25-12/20, M.D.B. & M., FOUND 3/4" IRON PIPE, 4" DOWN, TAGGED RCE 14344 C.R.#05233.

30' PREVIOUSLY DEDICATED TO THE COUNTY OF FRESNO FOR PUBLIC STREET PURPOSES PER SHEPHERD & TEAGUE ALLUVIAL TRACT NO. 4, RECORDED IN BOOK 2 OF RECORD OF SURVEYS AT PAGE 81, FRESNO COUNTY RECORDS.

SUGAR PINE LUMBER COMPANY'S RAILROAD RIGHT-OF-WAY PER DEED RECORDED ON APRIL 29, 1922 IN BOOK 199 AT PAGES 297 & 298, AS INSTRUMENT NO. 12304, O.R.F.C.

POSITION FOR THE SOUTHEAST CORNER OF LOT 54 OF SHEPHERD & TEAGUE ALLUVIAL TRACT NO. 4.

PREVIOUSLY DEEDED TO FRESNO IRRIGATION DISTRICT FOR IRRIGATION PIPELINE PURPOSES PER DEED RECORDED 19, AS DOCUMENT NO. O.R.F.C.

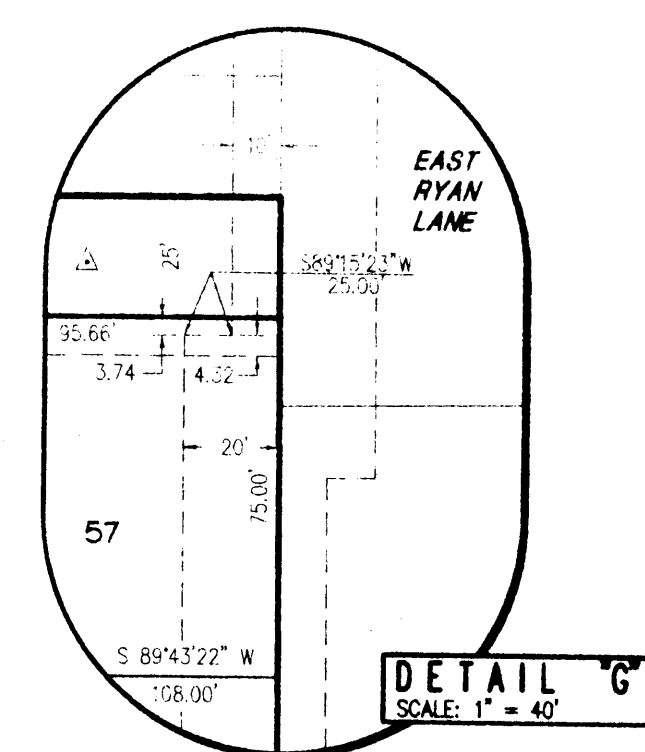
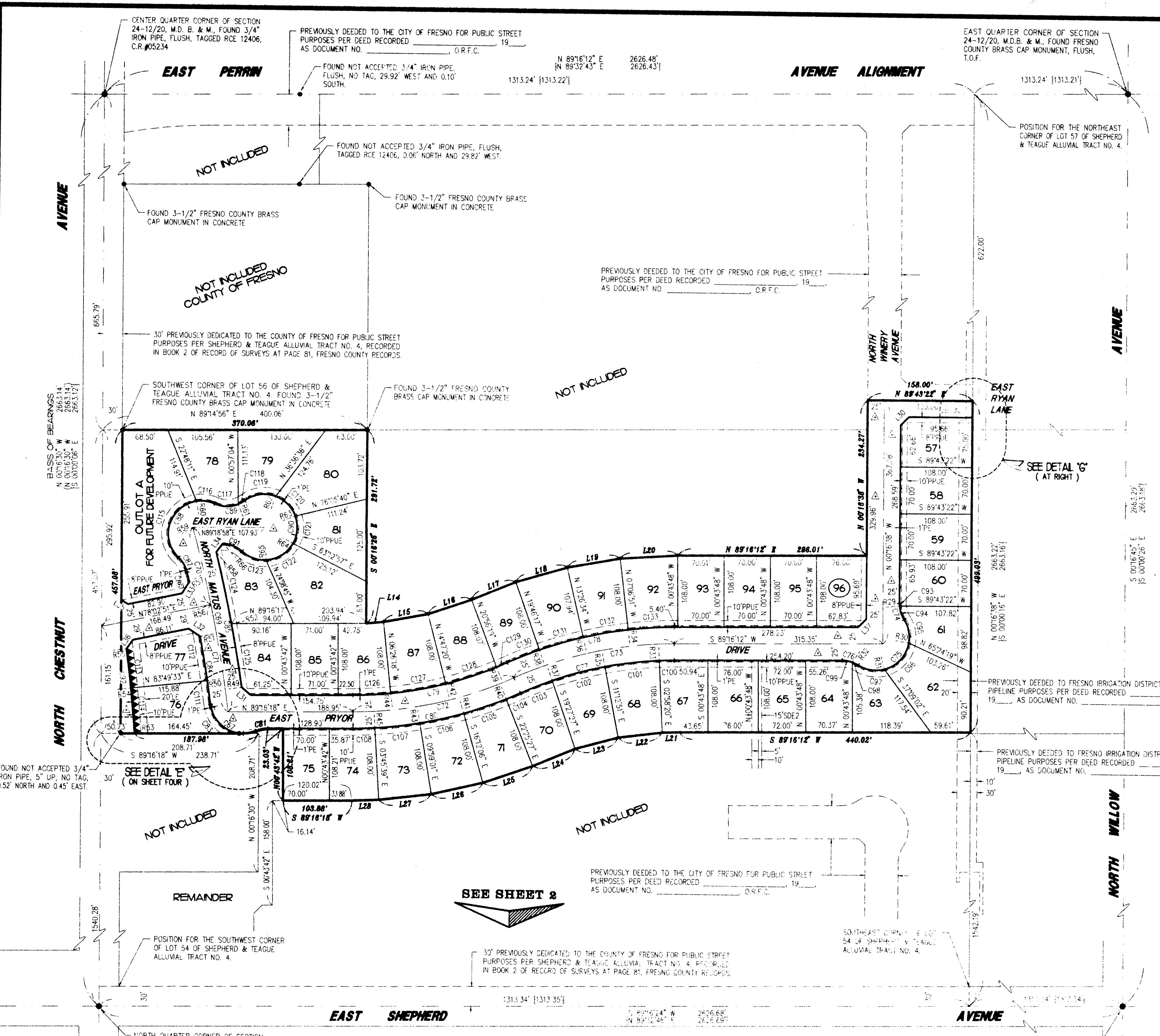
NORTHEAST CORNER OF SECTION 25-12/20, M.D.B. & M., FOUND FRESNO COUNTY BRASS CAP MONUMENT, FLUSH C.R.#05929.

REVISIONS	REVISIONS
09/10/96-DH #1	02/25/97-DH #1
10/02/96-DH #1	
01/05/97-DH #1	
01/17/97-DH #1	
02/03/97-KN #4	

MAP OF TRACT NO. 4741

PHASE ONE OF TRACT NO. 4741
 IN THE CITY OF FRESNO
 FRESNO COUNTY, CALIFORNIA
 SURVEYED AND PLATTED IN MAY, 1998
 BY EDWARD D. DUNKEL AND ASSOCIATES
 CONSISTING OF FOUR SHEETS
 SHEET 3 OF 4 SHEETS

NOTE:
 SEE SHEET FOUR FOR CURVE, LINE AND RADIAL TABLES
 AND DETAILS A, B, C, D AND E.



REVISIONS	
03/10/96	D-1
10/02/96	D-1
01/05/97	D-1
02/07/97	KN-4
02/25/97	D-1