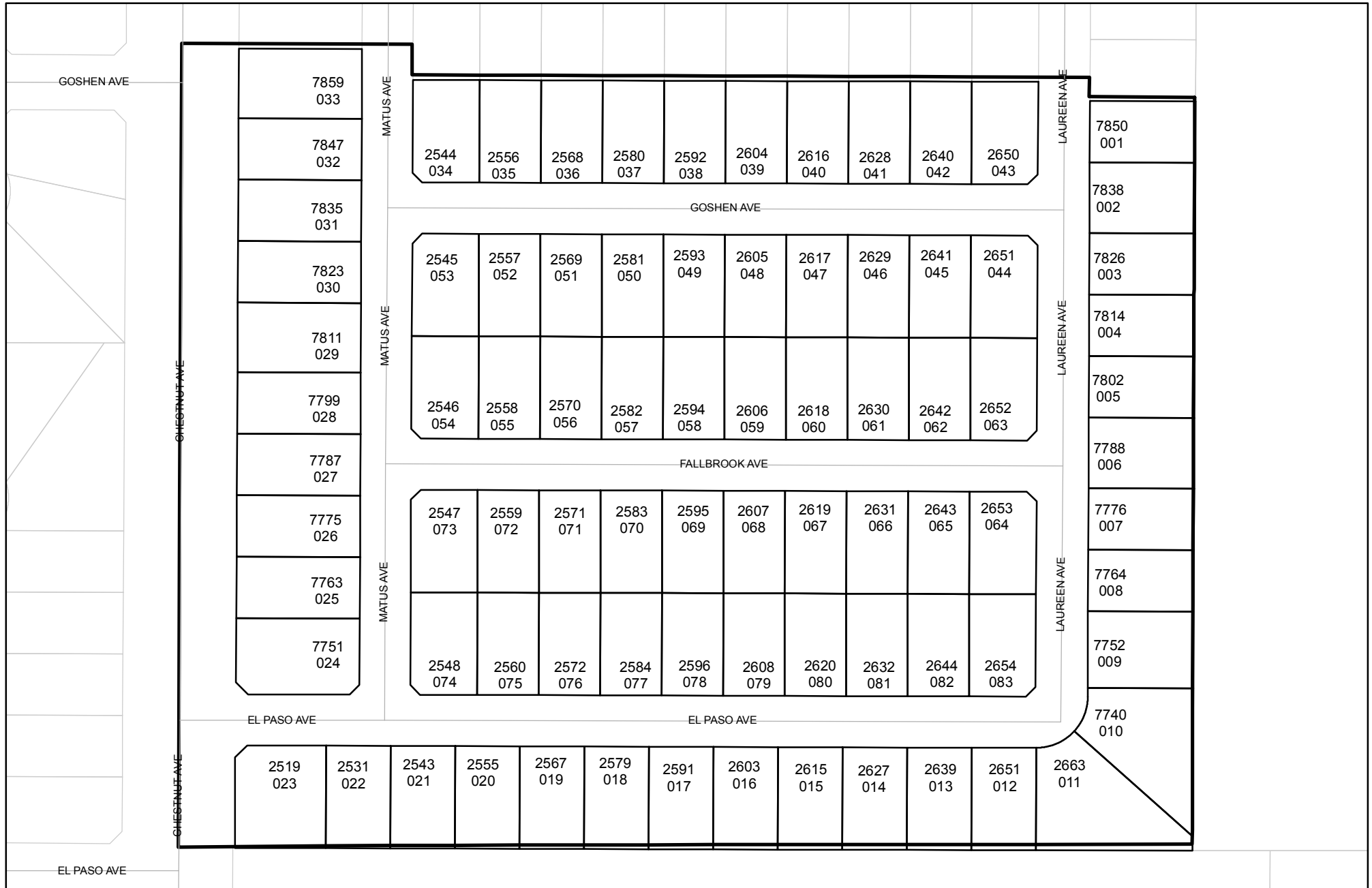




Street Names, Addresses and (Lot Numbers) for T4738

Prepared on Thu Feb 14 22:47:47 2019



GARFIELD PARK COLONY BK. 2, AT PG. 66 OF R.S., F.C.R. LOT 28

LOT 30 GARFIELD PARK COLONY BK. 2, PAGE 66 OF R.S., F.C.R.

NORTH QUARTER CORNER, SECTION 36, TOWNSHIP 12 SOUTH, RANGE 20 EAST, MOUNT DIABLO BASE AND MERIDIAN, FALLS ON MANHOLE POSITION ESTABLISHED PER THE COUNTY SURVEYOR.

PREVIOUSLY DECEDED FOR PUBLIC STREET PURPOSES PER DEED, RECORDED APRIL 2, 1993, AS DOCUMENT NO. 93046778, O.R.F.C. NO. 94045986, O.R.F.C.

PREVIOUSLY DECEDED FOR PUBLIC STREET PURPOSES PER DEED, RECORDED APRIL 2, 1993, AS DOCUMENT NO. 93046778, O.R.F.C. NO. 94045986, O.R.F.C.

PREVIOUSLY DECEDED FOR PUBLIC STREET PURPOSES PER DEED, RECORDED MARCH 30, 1907, IN VOLUME 383 OF DEEDS, AT PAGE 314 AS DOCUMENT NO. 4180, F.C.R.

PREVIOUSLY DECEDED FOR PUBLIC STREET PURPOSES PER DEED, RECORDED NOVEMBER 29, 1957 AT BOOK 3997, AT PAGE 597, O.R.F.C.

APPROXIMATE CENTERLINE OF MAUPIN WEST BRANCH PREVIOUSLY DECEDED TO FRESNO IRRIGATION DISTRICT FOR IRRIGATION PURPOSES PER DEED, RECORDED JANUARY 13, 1941 IN VOLUME 903 AT PAGE 253, O.R.F.C. TO BE ABANDONED PER DEED, DATED, PER INSTRUMENT NO. _____ O.R.F.C.

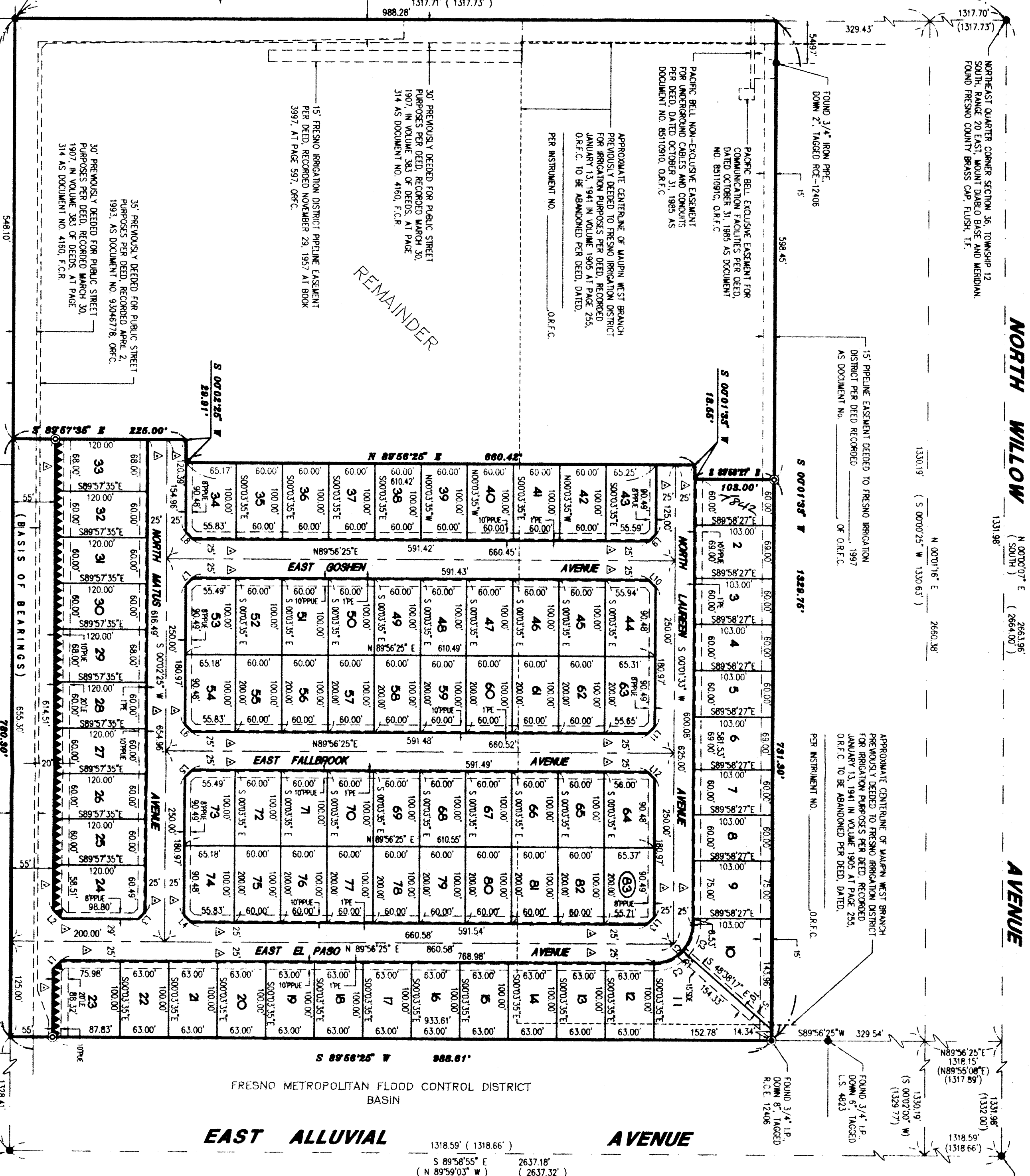
PACIFIC BELL NON-EXCLUSIVE EASEMENT FOR UNDERGROUND CABLES AND CONDUITS PER DEED, DATED OCTOBER 31, 1985 AS DOCUMENT NO. 8510910, O.R.F.C.

PRELIMINARY EASEMENT DECEDED TO FRESNO IRRIGATION DISTRICT PER DEED RECORDED _____ 1997 AS DOCUMENT NO. _____ OF O.R.F.C.

APPROXIMATE CENTERLINE OF MAUPIN WEST BRANCH PREVIOUSLY DECEDED TO FRESNO IRRIGATION DISTRICT FOR IRRIGATION PURPOSES PER DEED, RECORDED JANUARY 13, 1941 IN VOLUME 905 AT PAGE 255, O.R.F.C. TO BE ABANDONED PER DEED, DATED, PER INSTRUMENT NO. _____ O.R.F.C.

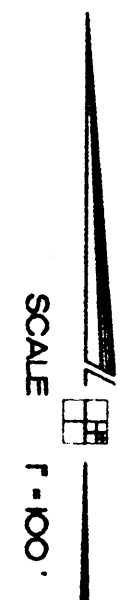
TRACT NO. 4581 VOL. 55, AT PGS. 90 & 91 OF PLATS, F.C.R.

TRACT NO. 4190 VOL. 55, AT PGS. 1, 2, & 3 OF PLATS, F.C.R.



LINE	DIRECTION	DISTANCE
L1	S 44°59'25" W	16.53'
L2	N 45°00'35" W	16.53'
L3	S 44°59'25" W	13.45'
L4	S 45°00'35" E	13.45'
L5	S 44°59'25" W	13.45'
L6	S 45°00'35" E	13.45'
L7	S 44°59'25" W	13.45'
L8	S 45°00'35" E	13.45'
L9	S 44°59'25" W	13.45'
L10	N 45°01'01" W	13.45'
L11	N 44°58'59" E	13.45'
L12	S 45°01'01" E	13.45'
L13	S 44°58'59" W	13.45'

CURVE	RADIUS	LENGTH	CHORD	DELTA
C1	50.00'	78.47'	70.66'	69°54'52"
C2	50.00'	36.71'	35.88'	42°03'41"
C3	50.00'	41.76'	40.56'	47°51'11"



NOTE:
 1. OLD, X 30" LONG IRON PIPE TO BE SET 6" DOWN AND TAGGED RCE-1978B, AT ALL LOT CORNERS, ANGLE POINTS, BEGINNING OF CURVES AND END OF CURVES, OR AS NOTED WITHIN THE TRACT STORED IN THE SUBDIVISION AGREEMENT FOR THIS TRACT.

- LEGEND**
- EXISTING MONUMENT FOUND AND ACCEPTED OR AS NOTED.
 - SET 1" O.D. IRON PIPE, 30" LONG, UP 4" IN 6" DIA. X 30" CONCRETE MONUMENT DOWN 6" AND TAGGED RCE-1978B, EXCEPT AS NOTED.
 - () RECORD DATA PER RECORD OF SURVEY, RECORDED IN BOOK 35 OF RECORD OF SURVEYS AT PAGE 3, FRESNO COUNTY RECORDS.
 - <> RECORD DATA PER TRACT NO. 4190, RECORDED IN VOLUME 55 OF PLATS AT PAGES 1, 2 AND 3, RECORDS FRESNO COUNTY.
 - PE PEDESTRIAN EASEMENT NOW OFFERED FOR DEDICATION FOR PUBLIC USE.
 - PUE PUBLIC UTILITY EASEMENT NOW OFFERED FOR DEDICATION FOR PUBLIC USE.
 - SOE STORM DRAIN PRELIMINARY EASEMENT PREVIOUSLY DECEDED TO FRESNO METROPOLITAN FLOOD CONTROL DISTRICT FOR STORM DRAINAGE PRELIMINARY PURPOSES PER DEED RECORDED AS DOCUMENT NO. _____ O.R.F.C.
 - LE LANDSCAPE EASEMENT NOW OFFERED FOR DEDICATION FOR PUBLIC USE.
 - ▲▲▲▲ INDICATES REINFORCEMENT OF DIRECT VEHICULAR ACCESS RIGHTS.
 - BLUE BORDER INDICATES THE LIMITS OF THIS SUBDIVISION.
 - INDICATES PORTIONS NOW OFFERED FOR DEDICATION FOR PUBLIC STREET PURPOSES.
 - PLANNING AND PUBLIC UTILITY EASEMENT NOW OFFERED FOR PUBLIC USE.
 - ▲ PUBLIC UTILITY EASEMENT.
 - ORFC OFFICIAL RECORDS FRESNO COUNTY.
 - FRESNO COUNTY RECORDS.
 - RES ON FILE WITH THE FRESNO COUNTY SURVEYOR.
 - EXISTING MONUMENT FOUND AND ACCEPTED AS NOTED, RESET WITH 1" O.D. IRON PIPE, 30" LONG UP 4" IN 6" DIA. X 30" CONCRETE MONUMENT DOWN 6" AND TAGGED RCE 1978B, EXCEPT AS NOTED.

PHASE I OF TENTATIVE TRACT NO. 4738
 IN THE CITY OF FRESNO
 FRESNO COUNTY, CALIFORNIA
 SURVEYED AND PLATTED IN MAY, 1986
 BY EDWARD D. DUNKEL AND ASSOCIATES
 CONSISTING OF TWO SHEETS
 SHEET 2 OF 2 SHEETS

MAP OF TRACT NO. 4738

BASIS OF BEARINGS
 THE WEST LINE OF THE NORTHWEST QUARTER OF SECTION 36, TOWNSHIP 12 SOUTH, RANGE 20 EAST, MOUNT DIABLO BASE AND MERIDIAN, TAGGED TO BE N 0°02'25" E, ALSO BEING THE CENTERLINE OF NORTH CHESTNUT AVENUE, RECORD OF SURVEY, RECORDED IN BOOK 35 OF RECORD OF SURVEYS AT PAGE 3, FRESNO COUNTY RECORDS.

REVISIONS
 K/S/96-RK-6
 07/22/97-94-1
 09/09/97-BM-1

PG. 4 - NEBNG - 07/8/97
 DUNKEL CADFILE 94039FM