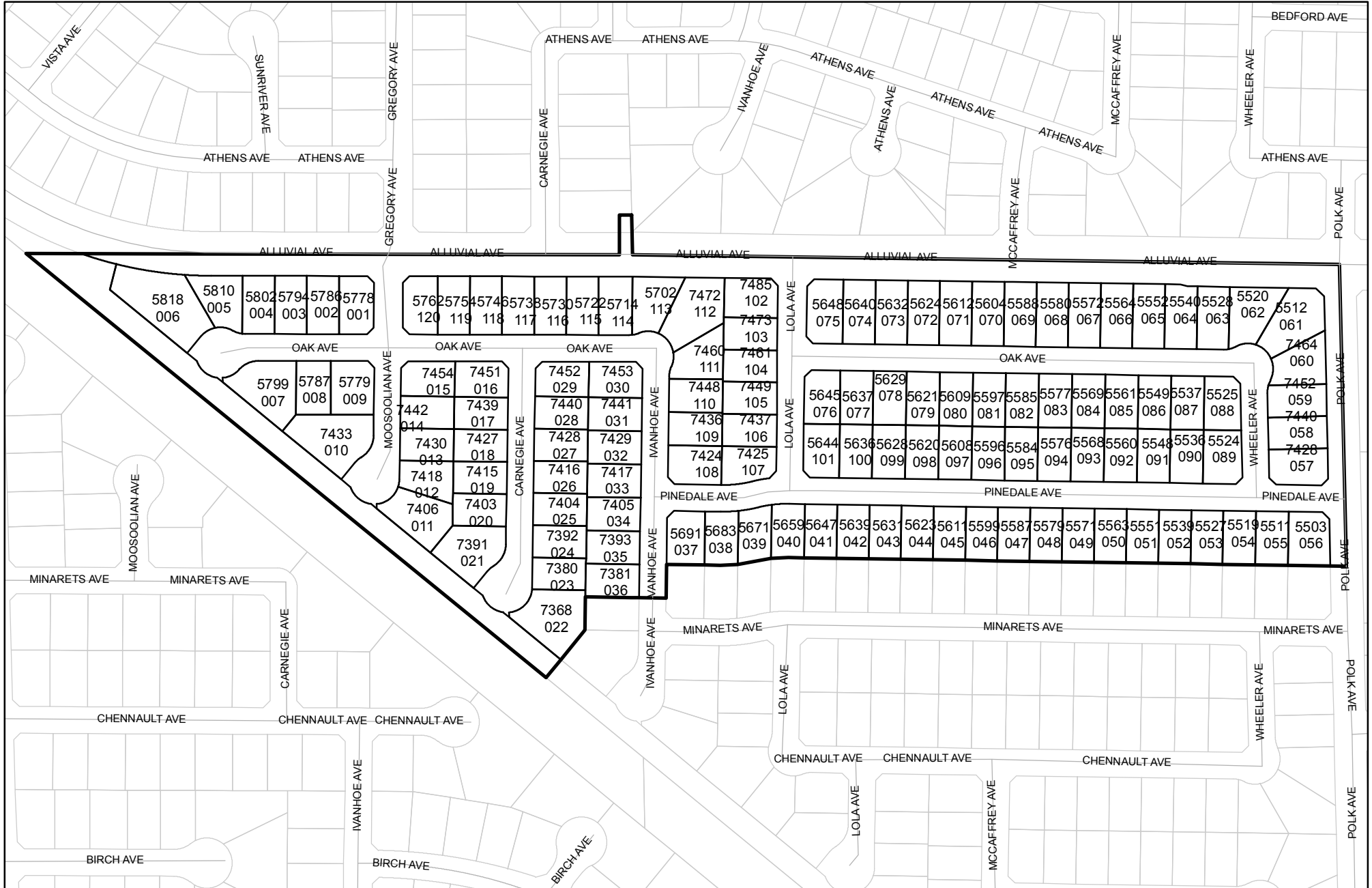




Prepared on Thu Oct 18 01:15:39 2018

Street Names, Addresses and (Lot Numbers) for T4737

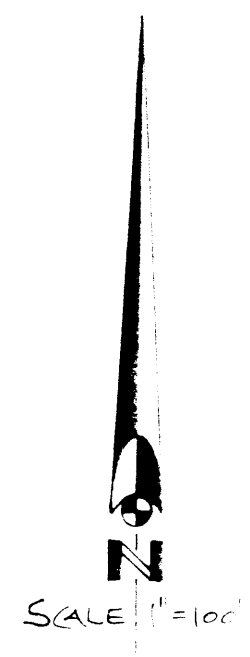
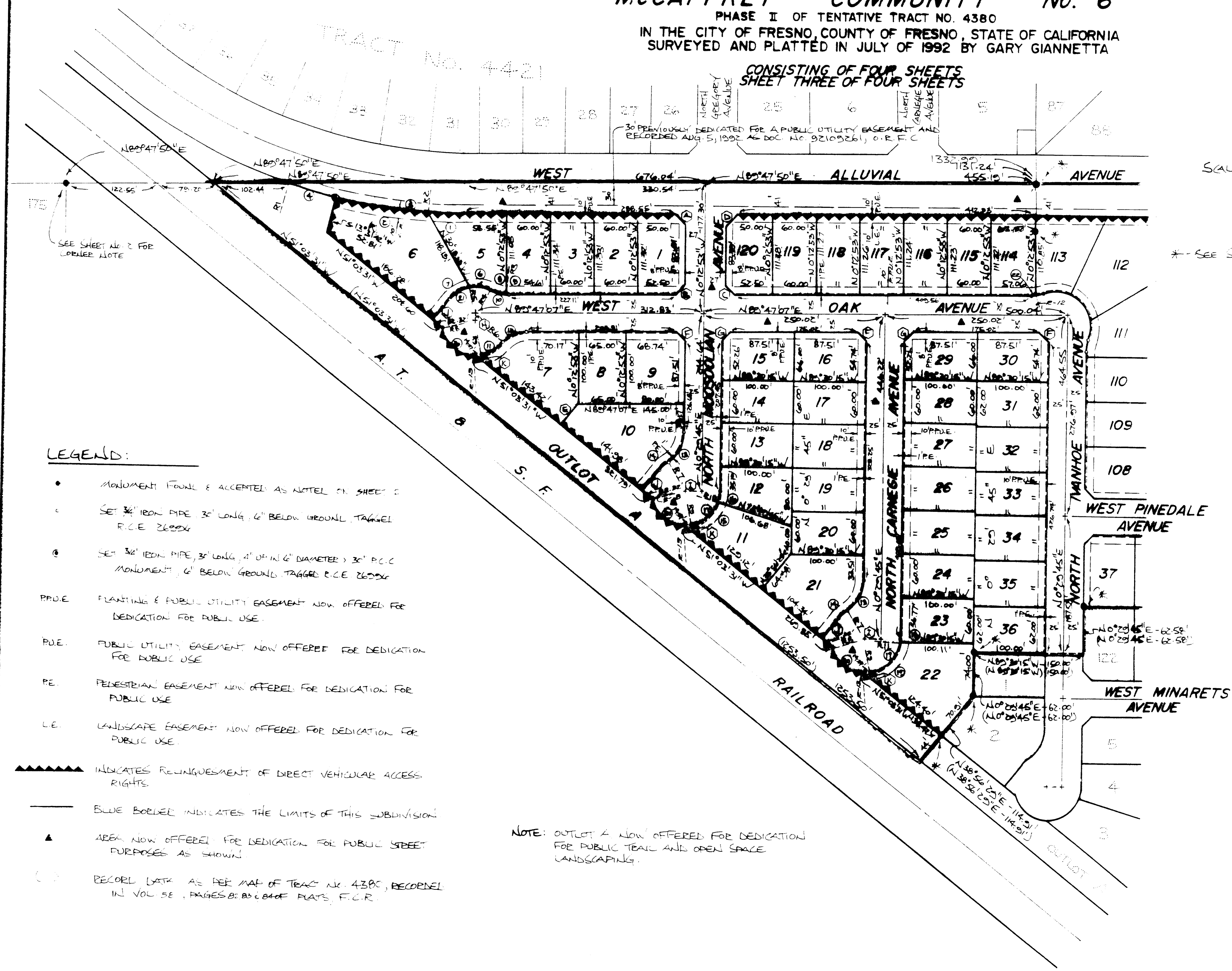


TRACT No. 4737

McCAFFREY COMMUNITY No. 6

PHASE II OF TENTATIVE TRACT NO. 4380
IN THE CITY OF FRESNO, COUNTY OF FRESNO, STATE OF CALIFORNIA
SURVEYED AND PLATTED IN JULY OF 1992 BY GARY GIANNETTA

CONSISTING OF FOUR SHEETS
SHEET THREE OF FOUR SHEETS



LEGEND:

- MONUMENT FOUND & ACCEPTED AS NOTED ON SHEET 2
- SET 3/4" IRON PIPE, 30" LONG, 6" BELOW GROUND, TAGGED R.C.E. 2699X
- ⊙ SET 3/4" IRON PIPE, 30" LONG, 4" DIA. (6" DIAMETER) 30" P.C.C. MONUMENT, 6" BELOW GROUND, TAGGED R.C.E. 2699X
- PRUE PLANTING & PUBLIC UTILITY EASEMENT NOW OFFERED FOR DEDICATION FOR PUBLIC USE.
- P.U.E. PUBLIC UTILITY EASEMENT NOW OFFERED FOR DEDICATION FOR PUBLIC USE.
- PE PEDESTRIAN EASEMENT NOW OFFERED FOR DEDICATION FOR PUBLIC USE.
- LE LANDSCAPE EASEMENT NOW OFFERED FOR DEDICATION FOR PUBLIC USE.
- ▬▬▬▬▬▬ INDICATES RELINQUISHMENT OF DIRECT VEHICULAR ACCESS RIGHTS.
- BLUE BORDER INDICATES THE LIMITS OF THIS SUBDIVISION
- ▲ AREA NOW OFFERED FOR DEDICATION FOR PUBLIC STREET PURPOSES AS SHOWN
- Ⓢ RECORD DATA AS PER MAP OF TRACT NO. 4380, RECORDED IN VOL 58, PAGES 88, 89, 84 OF PLATS, F.C.R.

NOTE: OUTLOT A NOW OFFERED FOR DEDICATION FOR PUBLIC TRAIL AND OPEN SPACE LANDSCAPING.

NOTE:

A 3/4" x 30" IRON PIPE, 6" BELOW GROUND, TAGGED R.C.E. 2699X, SHALL BE SET AT ALL CORNERS AND THE BEGINNING AND ENDING OF ALL CURVES AND WILL BE SET WITHIN ONE YEAR (OR ANY EXTENSION THEREOF.)

* - SEE SHEET NO. 2 FOR OTHER NOTES

SEE SHEET NO. 4

CURVE DATA

LINE DATA	RADIUS	DELTA	LENGTH	TANGENT
A	N 45° 12' 32" W	21.20		
B	N 44° 47' 07" E	17.68		
C	N 45° 12' 53" W	17.68		
D	N 44° 47' 20" E	21.21		
E	N 38° 56' 29" E	40.00		
F	N 44° 51' 34" W	17.57		
G	N 45° 07' 30" E	17.78		
H	N 0° 12' 53" W	10.00		
I	N 80° 30' 15" W	22.00		
J	N 38° 56' 29" E	40.00		
K	N 5° 08' 58" W	8.60		

RADIAL

R	BEARING	LENGTH	DELTA	TANGENT	
R1	S 18° 50' 46" W	741.00	3° 58' 19"	51.37	25.69
R2	S 3° 46' 00" W	741.00	5° 45' 33"	126.21	63.26
R3	S 6° 13' 59" W	741.00	19° 08' 56"	247.65	124.89
R4	N 28° 53' 44" E	741.00	5° 25' 04"	70.07	35.06
R5	N 12° 13' 44" W	47.00	27° 00' 27"	72.70	53.27
R6	N 48° 40' 25" W	47.00	41° 07' 28"	33.73	17.63
R7	N 31° 58' 23" W	47.00	38° 48' 47"	31.85	16.51
R8	S 7° 36' 40" W	46.00	22° 39' 45"	18.92	9.62
R9	S 5° 08' 58" E	46.00	6° 26' 52"	5.40	2.70
R10	S 7° 55' 28" E	46.00	20° 06' 37"	24.39	12.44
R11	S 85° 32' 40" E	47.00	43° 31' 28"	35.70	18.76
R12	S 7° 16' 27" E	46.00	48° 27' 32"	40.60	21.60
R13	S 7° 16' 27" E	46.00	57° 31' 52"	48.20	26.35
R14	S 7° 16' 27" E	47.00	19° 05' 08"	15.66	7.82
R15	S 7° 16' 27" E	47.00	66° 46' 32"	54.78	31.08
R16	S 7° 16' 27" E	47.00	17° 34' 47"	14.42	7.27
R17	S 7° 16' 27" E	47.00	84° 21' 10"	62.20	42.58
R18	S 7° 16' 27" E	47.00	3° 56' 26"	3.23	1.62
R19	S 7° 16' 27" E	47.00	80° 24' 58"	65.06	36.73
R20	S 7° 16' 27" E	47.00	63° 20' 40"	51.96	29.00
R21	S 7° 16' 27" E	47.00	75° 57' 15"	65.59	39.4
R22	S 7° 16' 27" E	46.00	0° 34'	5.89	2.95

821

CURVE DATA

①	RADIUS	DELTA	LENGTH	TANGENT
1	48.00	22°07'57"	16.54	3.39
2	48.00	7°01'34"	5.83	2.26
3	48.00	16°06'08"	12.66	6.36
4	47.00	45°21'43"	37.21	19.64
5	47.00	57°17'45"	47.00	25.68
6	47.00	32°19'04"	26.51	13.62
7	47.00	134°58'32"	110.72	113.40
8	250.00	14°42'52"	64.20	32.28
9	225.00	14°42'52"	57.78	29.05
10	275.00	6°53'36"	33.00	16.56
11	275.00	14°42'52"	70.62	35.51
12	275.00	6°50'00"	32.80	16.42
13	275.00	7°32'52"	37.83	18.94
14	225.00	6°27'56"	25.35	12.71
15	225.00	8°14'56"	32.35	16.22
16	48.00	29°06'37"	24.35	12.46
17	48.00	11°37'25"	5.74	4.85
18	48.00	17°29'12"	14.65	7.38
19	47.00	45°26'50"	37.28	19.68
20	47.00	48°45'45"	40.00	21.30
21	47.00	51°50'04"	42.52	22.84
22	47.00	146°02'35"	119.80	153.94
23	48.00	11°14'16"	5.14	4.72
24	48.00	17°52'21"	14.97	7.55

LINE DATA

①	BEARING	DIS.
A	N 44°30'12"W	17.68
B	N 45°20'48"E	17.68
C	N 42°14'10"E	18.65
D	N 44°30'00"W	21.21
E	N 45°23'51"E	21.21
F	N 85°30'15"W	70.72
G	N 85°30'15"W	23.28
H	N 87°04'45"E	32.78
I	N 75°26'15"E	63.17
J	N 86°22'17"E	32.37
K	N 85°30'15"W	23.72
L	N 45°35'25"W	16.01
M	N 44°24'31"E	17.34
N	N 85°30'02"W	28.43
O	N 85°30'02"W	18.72
P	N 72°12'18"W	13.46
Q	N 45°35'26"W	21.01
R	N 44°30'45"W	17.67

RADIAL

R-1	N 7°14'27"W
R-2	N 22°20'50"W
R-3	N 28°00'58"E
R-4	N 80°18'38"E
R-5	S 67°22'18"E
R-6	S 67°20'15"E
R-7	N 14°13'07"W
R-8	N 7°15'20"W
R-9	N 7°45'11"W
R-10	S 11°07'40"E
R-11	N 23°36'52"W
R-12	N 16°40'58"E
R-13	N 65°35'43"E
R-14	S 62°34'13"E
R-15	N 73°48'23"W

TRACT No. 4737

McCAFFREY COMMUNITY No. 6

PHASE I OF TENTATIVE TRACT NO. 4380

IN THE CITY OF FRESNO, COUNTY OF FRESNO, STATE OF CALIFORNIA
SURVEYED AND PLATTED IN JULY OF 1992 BY GARY GIANNETTA

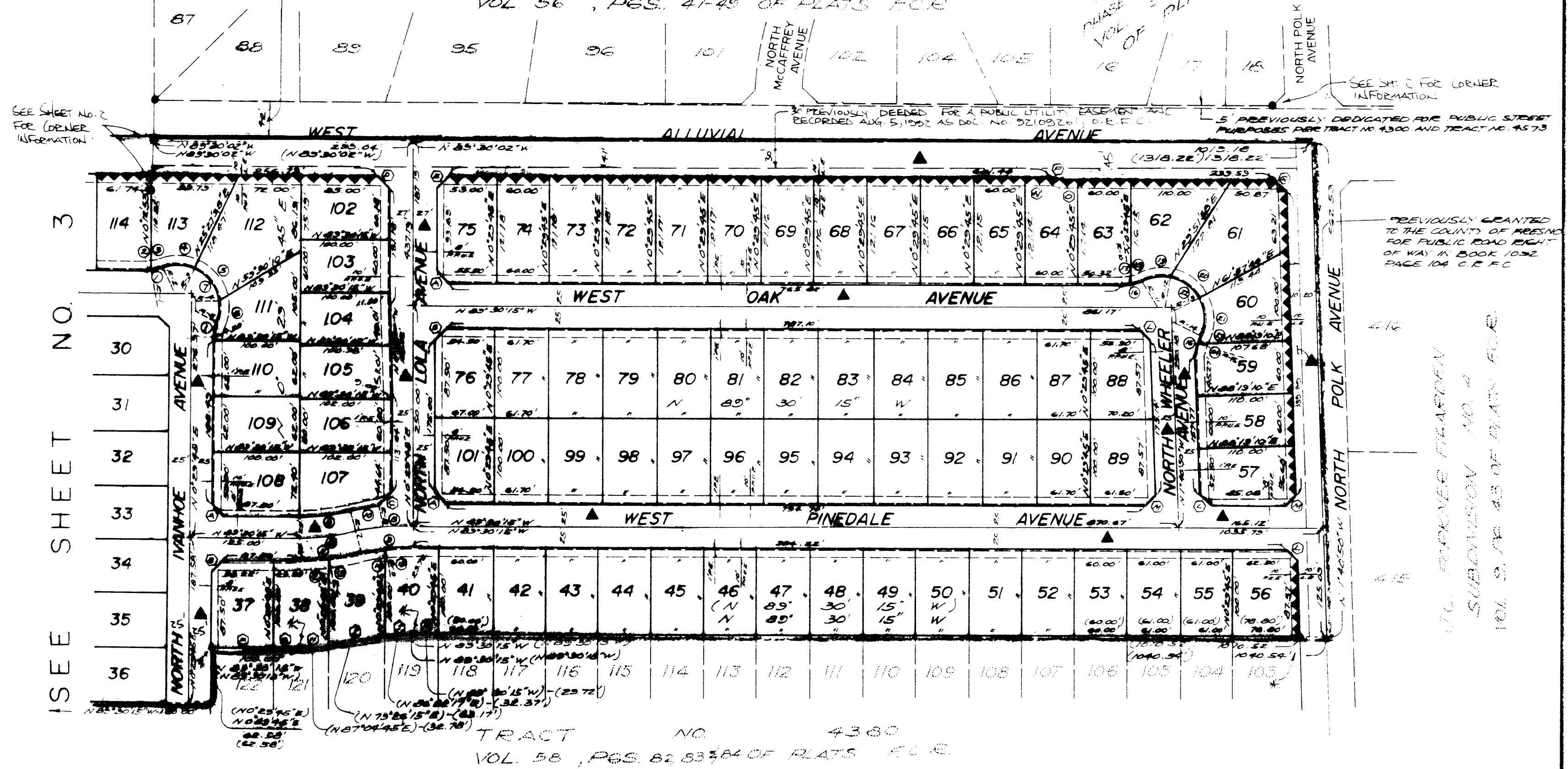
CONSISTING OF FOUR SHEETS
SHEET FOUR OF FOUR SHEETS

42' PREVIOUSLY DEEDED FOR PUBLIC STREET PURPOSES PER DEED RECORDED JUNE 13, 1985 AS DOC. NO. 83064-088, O.R.F.C.
PHASE II OF TENT. TRACT NO. 4300
VOL. 56, PGS. 47-48 OF PLATS F.C.E.

TRACT NO. 4300
PHASE I OF TENT. TRACT NO. 4380
VOL. 56
PGS. 47-48
OF PLATS F.C.E.



SCALE 1" = 100'



FOR THE LEGEND
SEE SHEET No. 3

* - SEE SHEET No. 2 FOR CORNER INFORMATION