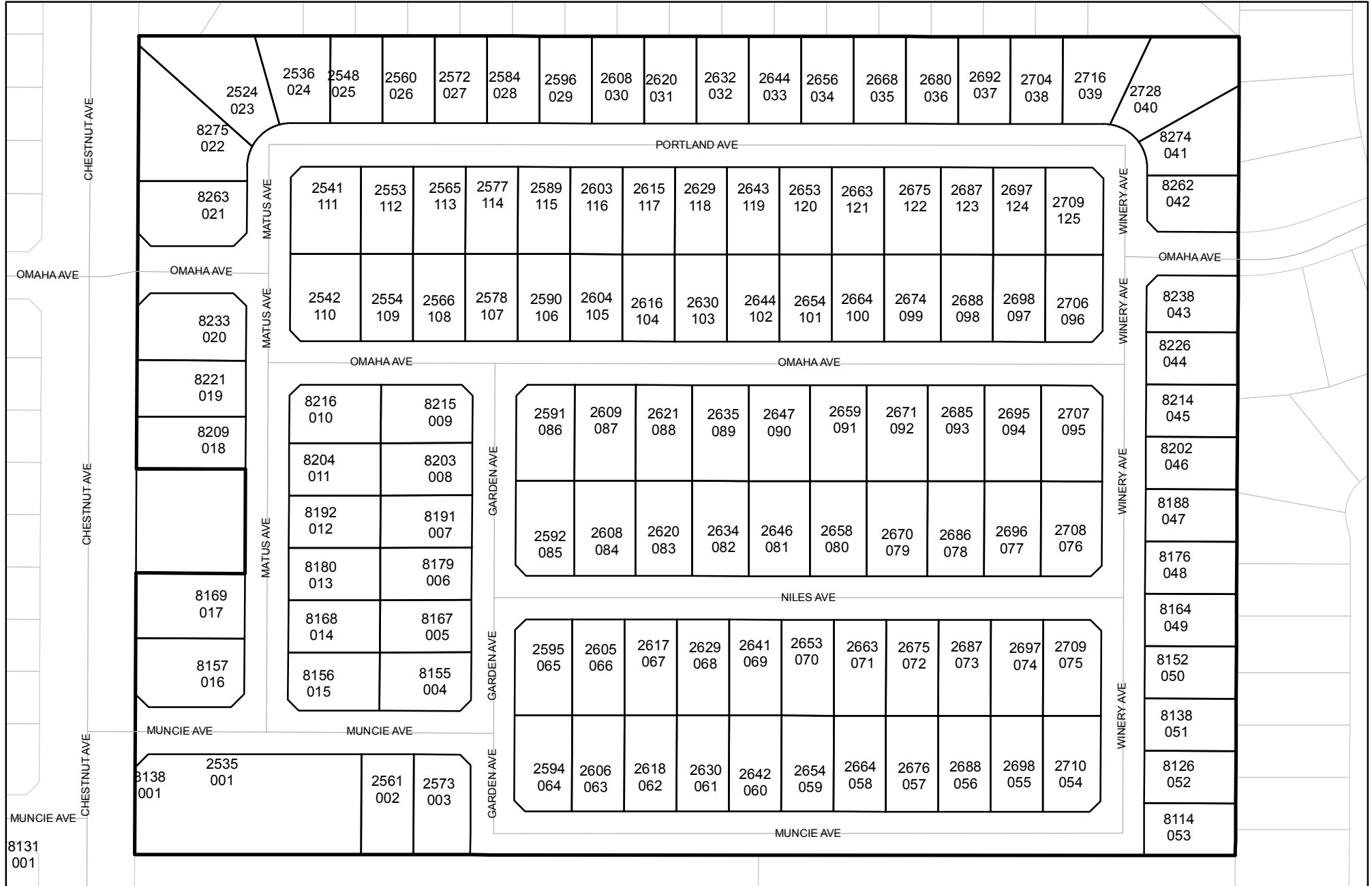




Street Names, Addresses and (Lot Numbers) for T4736

Prepared on Wed Jun 13 22:47:03 2018



MAP OF TRACT NO. 4736

PHASE I OF TENTATIVE TRACT NO. 4736

IN THE CITY OF FRESNO
FRESNO COUNTY, CALIFORNIA
SURVEYED AND PLATTED IN JANUARY, 1994
BY EDWARD D. DUNKEL AND ASSOCIATES

CONSISTING OF TWO SHEETS
SHEET 2 OF 2 SHEETS

BASIS OF BEARINGS

THE WEST LINE OF THE SOUTHEAST QUARTER OF SECTION 25, TOWNSHIP 12 SOUTH, RANGE 20 EAST, MOUNT DIABLO BASE AND MERIDIAN, WAS TAKEN TO BE N00°11'18"W AS SHOWN ON TRACT MAP NO. 4237, RECORDED IN VOLUME 58 OF PLATS, AT PAGES 89 & 90, OF FRESNO COUNTY RECORDS.

LEGEND

- EXISTING MONUMENT FOUND AND ACCEPTED OR AS NOTED.
 - SET 1" O.D. IRON PIPE, DOWN 6" AND TAGGED RCE-19789, EXCEPT AS NOTED.
 - ⊙ SET 1" O.D. IRON PIPE, 30" LONG, UP 4", IN 6" DIA. x 30" CONCRETE MONUMENT DOWN 6" AND TAGGED RCE-19789, EXCEPT AS NOTED.
 - () RECORD DATA PER GARFIELD PARK COLONY, RECORD OF SURVEY, BOOK 2 AT PAGE 68, FRESNO COUNTY RECORDS.
 - [] RECORD DATA PER TRACT NO. 4237, RECORDED IN VOLUME 58 OF PLATS, AT PAGES 89 & 90, FRESNO COUNTY RECORDS.
 - < > RECORD DATA PER TRACT NO. 4261, RECORDED IN VOLUME 58 OF PLATS, AT PAGES 56 & 57, FRESNO COUNTY RECORDS.
 - (()) RECORD DATA PER DEED OF CITY OF FRESNO WELL NO. 187, RECORDED ON OCTOBER 5, 1993 AS DOCUMENT NO. 93154023 OFFICIAL RECORDS FRESNO COUNTY.
 - PE. PEDESTRIAN EASEMENT NOW OFFERED FOR DEDICATION FOR PUBLIC USE.
 - PUE. PUBLIC UTILITY EASEMENT NOW OFFERED FOR DEDICATION FOR PUBLIC USE.
 - PPUE. PLANTING AND PUBLIC UTILITY EASEMENT NOW OFFERED FOR DEDICATION FOR PUBLIC USE.
 - LE. LANDSCAPE EASEMENT NOW OFFERED FOR DEDICATION FOR PUBLIC USE.
 - CALC. CALCULATED DISTANCE FROM RECORD DATA.
 - 10' FIDE PREVIOUSLY DEEDED TO FRESNO IRRIGATION DISTRICT FOR IRRIGATION PIPELINE PURPOSES PER DEED RECORDED 199, AS DOCUMENT NO. O.R.F.C.
 - CFW. 187 CITY OF FRESNO WELL NO. 187
 - ▲▲▲▲ INDICATES RELINQUISHMENT OF DIRECT ACCESS RIGHTS.
 - THE SHADED BLUE BORDER INDICATES THE LIMITS OF THIS SUBDIVISION.
 - △ INDICATES PORTIONS NOW OFFERED FOR DEDICATION FOR PUBLIC STREET PURPOSES.
 - ⊙ INDICATES PORTIONS PREVIOUSLY DEDICATED FOR PUBLIC STREET PURPOSES PER GARFIELD PARK COLONY, BOOK 2 OF RECORD OF SURVEYS AT PAGE 68, F.C.R.
- * NOTE *
- 1" O.D. x 30" LONG IRON PIPE TO BE SET 6" DOWN AND TAGGED RCE-19789, AT ALL LOT CORNERS, ANGLE POINTS, BEGINNING OF CURVES AND END OF CURVES, OR AS NOTED WITHIN THE TIME SPECIFIED IN THE SUBDIVISION AGREEMENT FOR THIS TRACT.

LINE TABLE

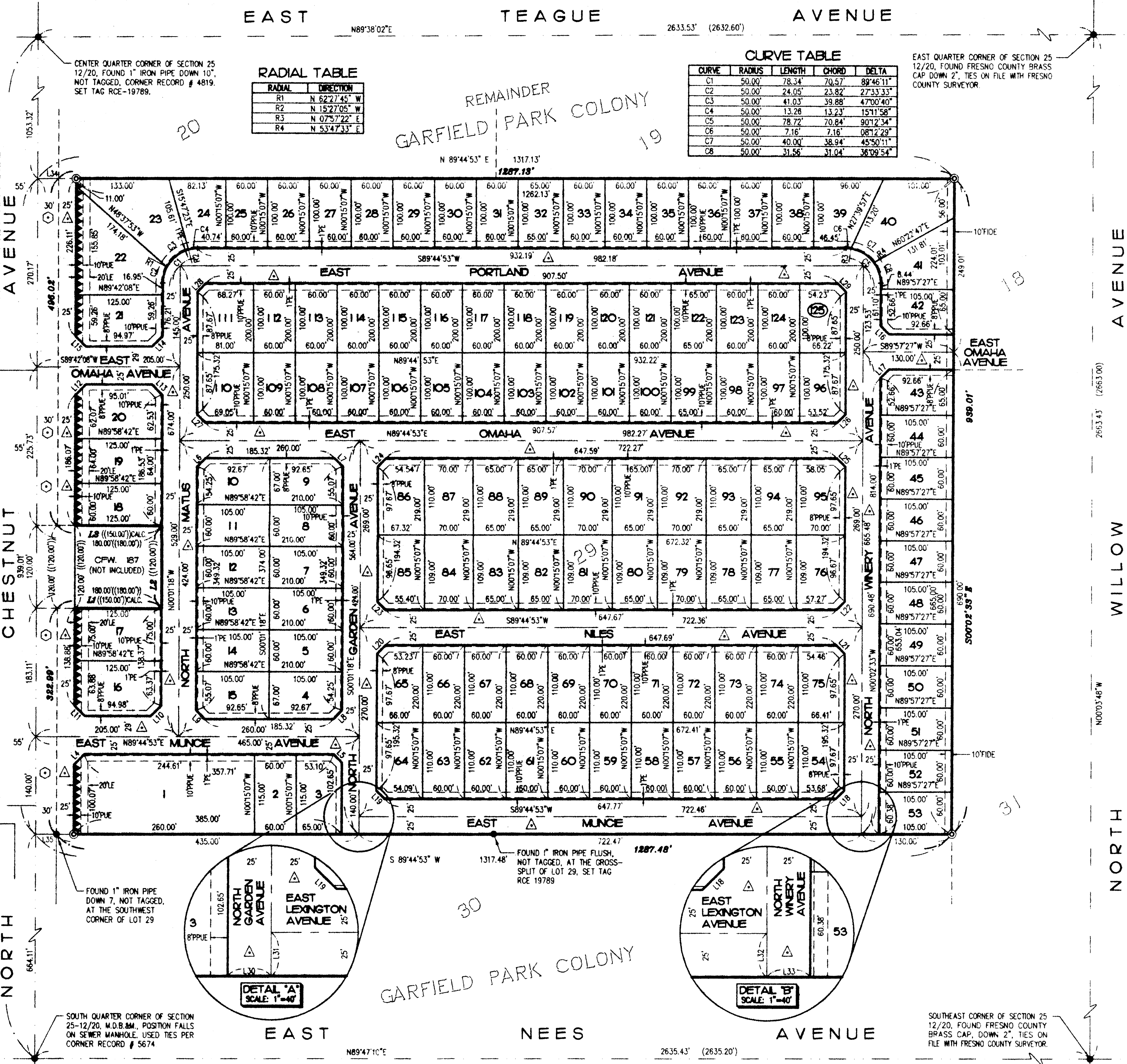
LINE	DIRECTION	DISTANCE
L1	N 89°58'42" E	150.00'
L2	N 00°01'18" W	120.00'
L3	N 89°58'42" E	150.00'
L4	N 44°51'49" E	21.16'
L5	S 45°08'15" E	17.44'
L6	N 44°51'47" E	17.47'
L7	S 45°08'13" E	17.44'
L8	N 44°51'47" E	17.47'
L9	S 45°08'13" E	17.44'
L10	N 44°51'47" E	21.28'
L11	S 45°08'13" E	21.18'
L12	N 44°50'25" E	21.16'
L13	S 45°09'35" E	21.26'
L14	N 44°50'25" E	21.28'
L15	S 45°09'40" E	21.18'
L16	S 45°02'33" E	17.46'
L17	N 44°57'27" E	17.46'
L18	N 44°51'10" E	17.47'
L19	N 45°08'13" W	17.44'
L20	N 44°51'47" E	17.47'
L21	S 45°08'50" E	17.44'
L22	S 44°51'10" W	17.47'
L23	N 45°08'13" W	17.44'
L24	N 44°51'47" E	17.47'
L25	S 45°08'50" E	17.44'
L26	N 44°51'11" E	17.47'
L27	S 45°08'13" E	17.44'
L28	N 44°51'47" E	17.47'
L29	S 45°08'51" E	17.44'
L30	N 89°44'53" E	25.00'
L31	N 00°01'18" W	25.00'
L32	N 00°02'33" W	25.00'
L33	N 89°44'53" E	25.00'
L34	N 89°44'53" E	30.00'
L35	N 89°44'53" E	30.00'

REVISIONS
05/20/97-DH • 1
05/30/97-RK • 4
06/09/97-DH • 1
07/25/97-DH • 1
09/10/97-EM • 7

PC# 4 - NE-RING - 03/25/97
DUNKEL CADFILE: 92077FM

TRACT NO. 4261
P.M.L. NO. 95-10
VOL. 58, PGS. 58-57, F.C.R.
BK. 57, PG. 19, F.C.R.

TRACT NO. 4237
P.M.L. NO. 95-10
VOL. 58, PGS. 89-90, F.C.R.
BASIS OF BEARINGS
N 00°01'18" W 25.35' 44"
N 00°01'18" W 26.35' 90"
N 00°02'33" W 26.36' 45"
N 00°02'33" W 26.35' 90"

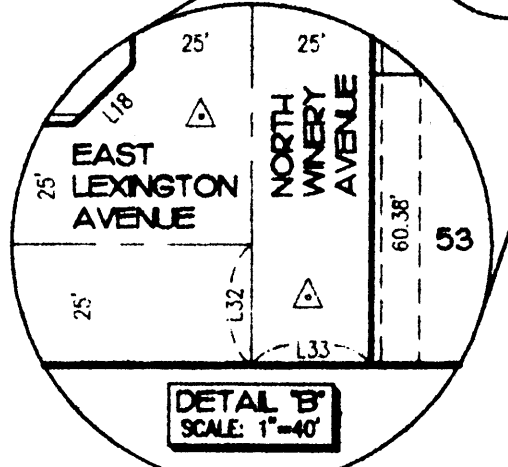
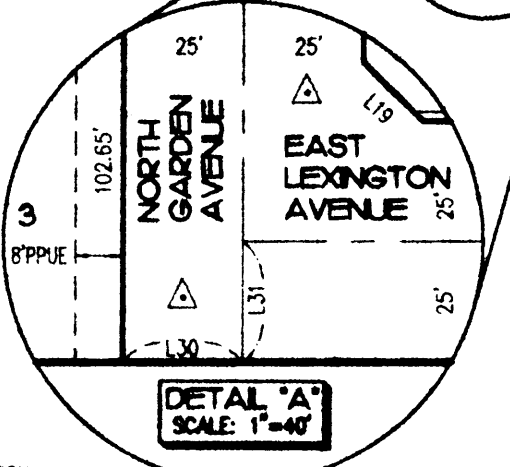


RADIAL TABLE

RADIAL	DIRECTION
R1	N 62°27'45" W
R2	N 15°27'05" W
R3	N 07°57'22" E
R4	N 53°47'33" E

CURVE TABLE

CURVE	RADIUS	LENGTH	CHORD	DELTA
C1	50.00'	78.34'	70.57'	89°46'11"
C2	50.00'	24.05'	23.82'	27°33'33"
C3	50.00'	41.03'	39.88'	47°00'40"
C4	50.00'	13.28'	13.23'	15°11'58"
C5	50.00'	78.72'	70.84'	90°12'34"
C6	50.00'	7.16'	7.16'	08°12'29"
C7	50.00'	40.00'	38.94'	45°50'11"
C8	50.00'	31.56'	31.04'	38°09'54"



CENTER QUARTER CORNER OF SECTION 25 12/20, FOUND 1" IRON PIPE DOWN 10", NOT TAGGED, CORNER RECORD # 4819, SET TAG RCE-19789.

EAST QUARTER CORNER OF SECTION 25 12/20, FOUND FRESNO COUNTY BRASS CAP DOWN 2", TIES ON FILE WITH FRESNO COUNTY SURVEYOR.

FOUND 1" IRON PIPE FLUSH, NOT TAGGED, AT THE CROSS-SPLIT OF LOT 29, SET TAG RCE 19789

SOUTH QUARTER CORNER OF SECTION 25-12/20, M.D.B.M., POSITION FALLS ON SEWER MANHOLE, USED TIES PER CORNER RECORD # 5674

SOUTHEAST CORNER OF SECTION 25 12/20, FOUND FRESNO COUNTY BRASS CAP, DOWN 2", TIES ON FILE WITH FRESNO COUNTY SURVEYOR.