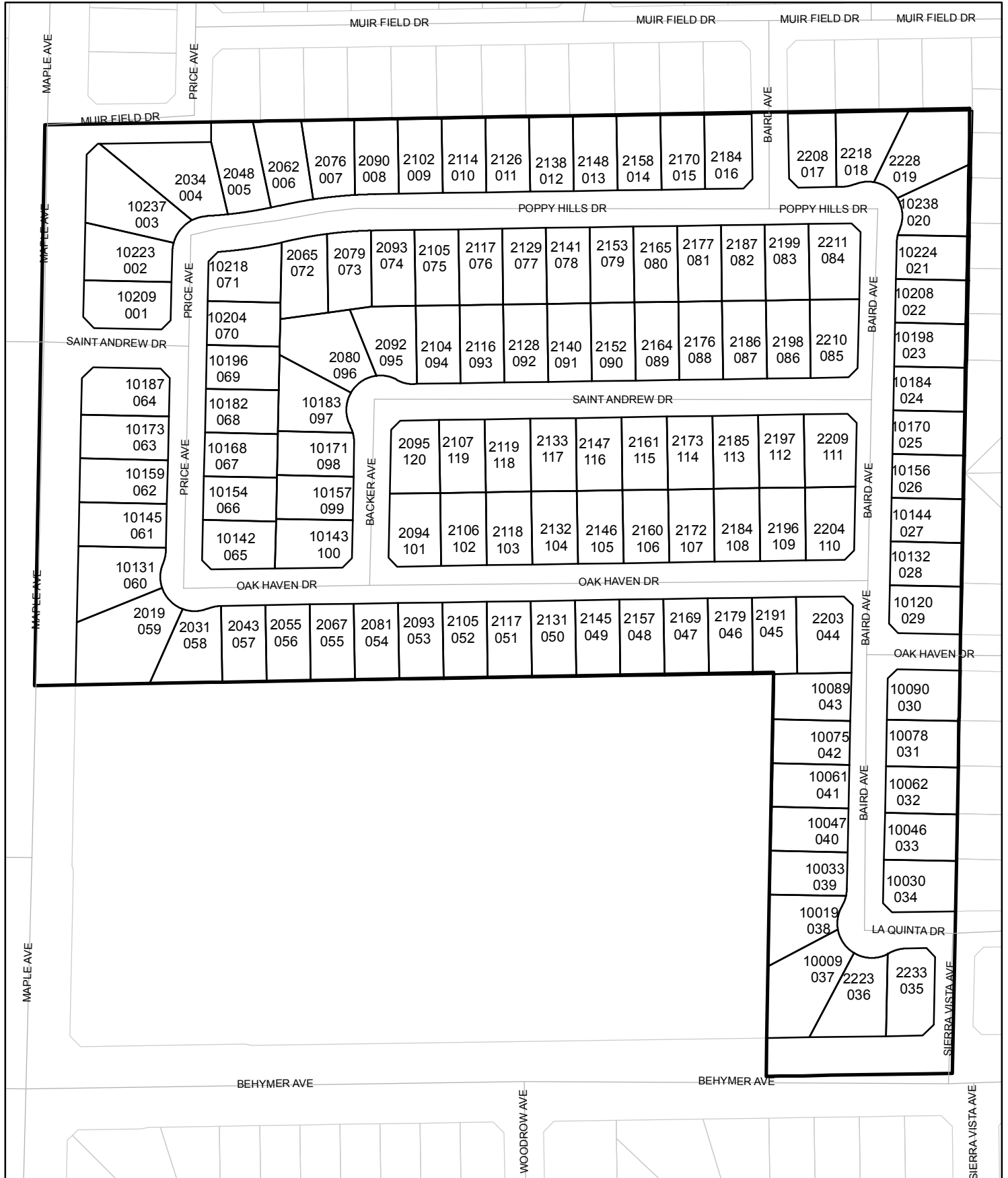




Street Names, Addresses and (Lot Numbers) for T4702

Prepared on Thu Feb 14 22:49:24 2019



TRACT NO. 4702

SHEET TWO OF TWO SHEETS
 IN THE CITY OF FRESNO, COUNTY OF FRESNO, STATE OF CALIFORNIA
 SURVEYED AND PLATTED IN FEBRUARY 1998, BY GARY G. GIANNETTA

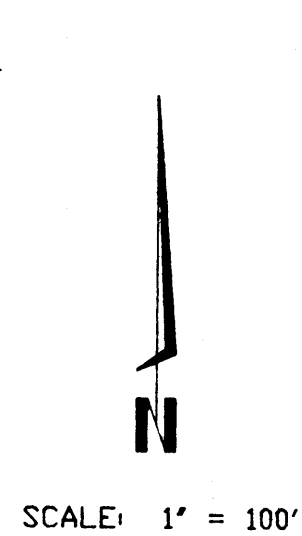
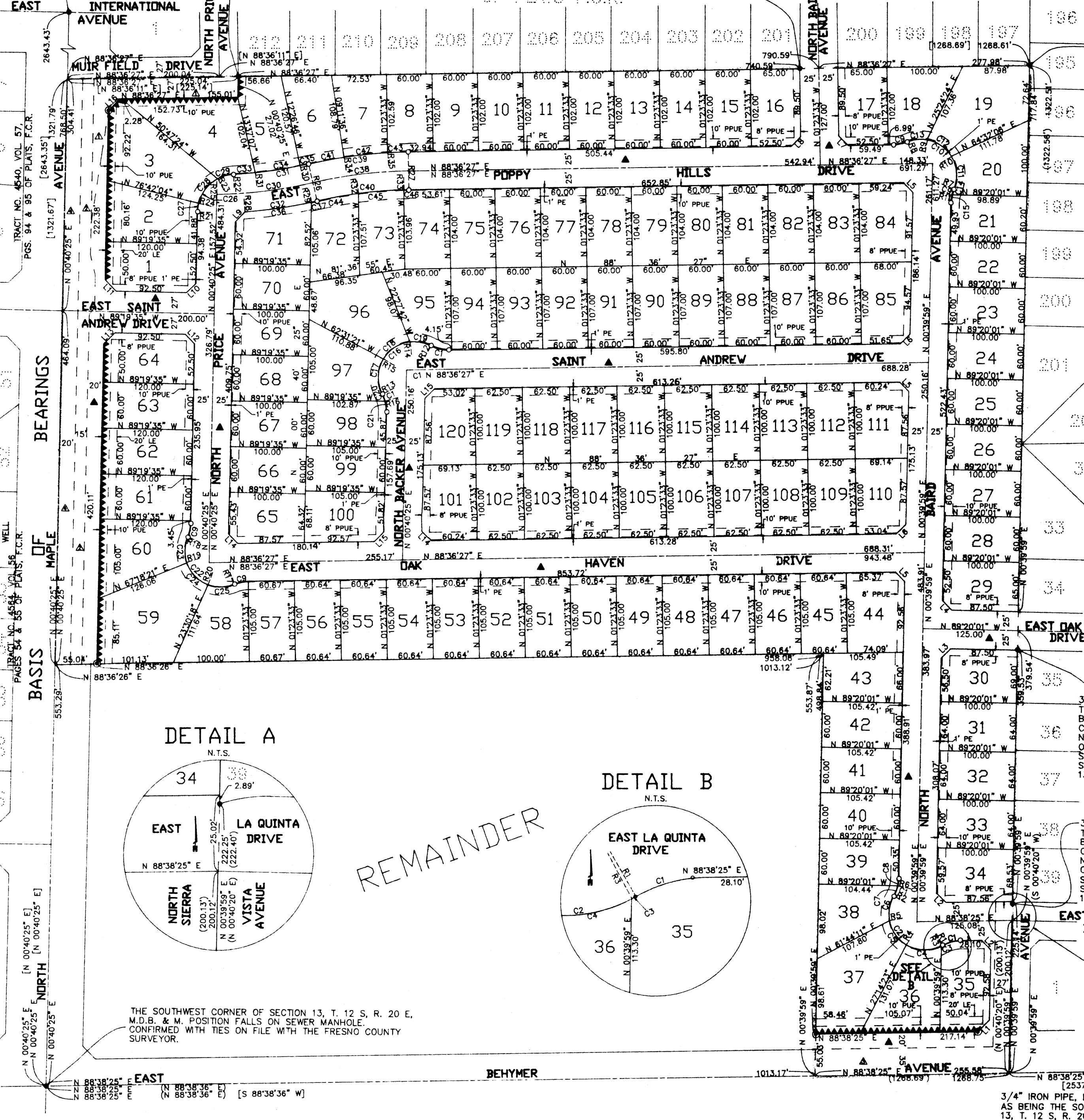
THE WEST QUARTER CORNER OF SECTION 13, T. 12 S, R. 20 E, M.D.B. & M., POSITION FALLS ON SEWER MANHOLE, CONFIRMED WITH THE FRESNO COUNTY SURVEYOR.

3/4" IRON PIPE, 4" DOWN, TAGGED RCE 19789 AS BEING THE SOUTHWEST CORNER OF LOT 212 OF TRACT NO. 4432, ALSO AS BEING ON THE NORTH LINE OF THE SOUTHWEST QUARTER OF THE SOUTHWEST QUARTER OF SECTION 13, T. 12 S, R. 20 E, M.D.B. & M.

TRACT NO. 4432, VOL. 59, PAGES 11, 12 & 13 OF PLATS F.C.R.

3/4" IRON PIPE, 6" DOWN, TAGGED RCE 19789 AS BEING THE SOUTHEAST CORNER OF LOT 201 OF TRACT NO. 4432, ALSO AS BEING ON THE NORTH LINE OF THE SOUTHWEST QUARTER OF SECTION 13, T. 12 S, R. 20 E, M.D.B. & M.

3/4" IRON PIPE, 6" DOWN, TAGGED L.S. 4151, AS BEING THE SOUTHEAST CORNER OF LOT 197 OF TRACT NO. 4432, ALSO BEING THE NORTHEAST CORNER OF THE SOUTHWEST QUARTER OF SECTION 13, T. 12 S, R. 20 E, M.D.B. & M.

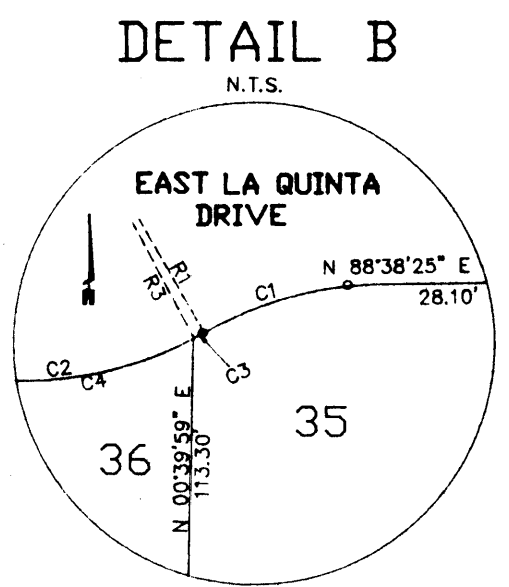
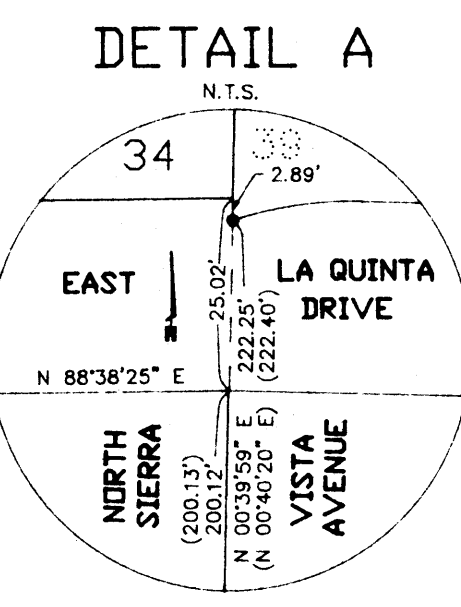


- LEGEND**
- MONUMENT FOUND AND ACCEPTED AS NOTED
 - SET 3/4" IRON PIPE, 30" LONG, 6" DOWN BELOW GROUND, TAGGED R.C.E. 26996
 - ⊙ SET 3/4" IRON PIPE, 30" LONG, 4" UP IN 6" DIAMETER x 30" P.C.C. MONUMENT, DOWN 6" BELOW GROUND, TAGGED R.C.E. 26996
 - PUE PUBLIC UTILITY EASEMENT NOW OFFERED FOR DEDICATION FOR PUBLIC USE
 - ▲ PREVIOUSLY DEEDED FOR PUBLIC STREET PURPOSES PER DEED RECORDED NOVEMBER 2, 1995 AS DOCUMENT NO. 95141060, O.R.F.C.
 - ▲ PREVIOUSLY DEEDED FOR PUBLIC STREET PURPOSES PER DEED RECORDED JULY 27, 1993 AS DOCUMENT NO. 9311874, O.R.F.C.
 - ▲ PREVIOUSLY DEEDED FOR PUBLIC STREET PURPOSES PER DEED RECORDED DECEMBER 12, 1996 AS DOCUMENT NO. 96163743, O.R.F.C.
 - ▲ PREVIOUSLY GRANTED TO THE COUNTY OF FRESNO FOR PUBLIC STREET PURPOSES RECORDED OCTOBER 20, 1904 IN BOOK 219 AT PAGES 400 OF DEEDS, O.R.F.C.
 - ▲ NOW OFFERED FOR DEDICATION FOR PUBLIC STREET PURPOSES
 - ▲▲▲ INDICATES RELINQUISHMENT OF DIRECT ACCESS RIGHTS
 - () RECORD DATA AS PER TRACT 4788 RECORDED IN VOLUME 80 PAGES 52, 53, 54, 55, AND 56 OF PLATS, FRESNO COUNTY RECORDS
 - [] RECORD DATA AS PER TRACT 4432 RECORDED IN VOLUME 59 PAGES 11, 12 AND 13 OF PLATS, FRESNO COUNTY RECORDS
 - LE LANDSCAPE EASEMENT NOW OFFERED FOR DEDICATION FOR PUBLIC USE.
 - BLUE BORDER INDICATES THE LIMITS OF THIS SUBDIVISION
 - PPUE PLANTING AND PUBLIC UTILITY EASEMENT NOW OFFERED FOR DEDICATION FOR PUBLIC USE.
 - PE PEDESTRIAN EASEMENT NOW OFFERED FOR DEDICATION FOR PUBLIC USE
- NOTE:**
1. SET 3/4" IRON PIPE, 6" DOWN, TAGGED RCE 26999 AT ALL LOT CORNERS
- BASIS OF BEARINGS :**
- THE WEST LINE OF THE SOUTHWEST QUARTER OF SECTION 13, T. 12 S, R. 20 E, M.D.B. & M., TAKEN AS BEING N 00°40'25" E AS SHOWN ON THE MAP OF TRACT NO. 4432 RECORDED IN VOLUME 59 PAGES 11, 12, AND 13 OF PLATS, F.C.R.

LINE	DIRECTION	DISTANCE
L1	N 44°39'12" E	21.58'
L2	N 45°20'48" W	17.36'
L3	N 45°39'59" E	17.68'
L4	N 44°20'01" W	17.68'
L5	N 45°21'47" W	17.36'
L6	N 44°38'13" E	17.68'
L7	N 46°23'33" W	17.68'
L8	N 43°36'27" E	17.68'
L9	N 43°14'51" E	18.41'
L10	N 45°40'24" E	17.68'
L11	N 44°19'35" W	21.21'
L12	N 44°19'36" W	17.68'
L13	N 45°40'25" E	21.21'
L14	N 45°21'36" W	17.36'
L15	N 44°38'26" E	17.99'
L16	N 44°38'26" E	21.59'

RADIAL	DIRECTION
R1	N 30°28'12" W
R2	N 60°13'24" W
R3	S 28°37'56" E
R4	S 79°14'32" W
R5	S 30°28'48" W
R6	S 77°43'55" E
R7	N 67°12'04" W
R8	N 23°31'30" W
R9	N 09°24'48" E
R10	N 58°10'43" E
R11	N 76°58'56" W
R12	N 27°43'04" E
R13	N 81°33'48" E
R14	N 07°03'04" W
R15	N 60°08'32" W
R16	N 73°32'50" E
R17	N 23°31'30" W
R18	N 67°11'38" W
R19	N 71°04'50" E
R20	N 20°05'08" E
R21	S 89°19'36" E
R22	S 03°36'19" E
R23	N 28°16'30" W
R24	N 78°28'22" W
R25	S 01°23'33" E
R26	N 13°34'11" W
R27	S 01°23'33" E
R28	S 04°45'04" E
R29	S 12°53'43" E
R30	S 12°28'47" E
R31	S 06°29'29" E
R32	N 08°01'20" W
R33	N 02°01'44" W
R34	N 09°11'35" W
R35	N 03°52'28" W

CURVE	RADIUS	LENGTH	TANGENT	DELTA
C1	48.00'	24.39'	12.46'	29°06'37"
C2	47.00'	123.25'	176.93'	150°14'48"
C3	47.00'	1.51'	0.75'	01°50'16"
C4	47.00'	48.49'	26.65'	59°06'44"
C5	47.00'	40.00'	21.21'	48°45'44"
C6	47.00'	33.25'	17.36'	40°33'04"
C7	48.00'	14.67'	7.39'	17°30'31"
C8	48.00'	9.72'	4.88'	11°36'06"
C9	48.00'	18.54'	9.39'	22°07'57"
C10	47.00'	111.83'	117.28'	136°19'26"
C11	47.00'	44.81'	24.27'	54°37'13"
C12	47.00'	40.00'	21.30'	48°45'56"
C13	47.00'	27.02'	13.89'	32°56'18"
C14	48.00'	8.19'	4.11'	09°46'52"
C15	48.00'	10.35'	5.19'	12°21'05"
C16	47.00'	119.89'	154.48'	146°09'17"
C17	47.00'	47.82'	26.21'	58°17'41"
C18	47.00'	43.55'	23.48'	53°05'28"
C19	47.00'	28.52'	14.71'	34°46'08"
C20	48.00'	10.04'	5.04'	11°59'02"
C21	48.00'	14.33'	7.23'	17°07'53"
C22	47.00'	117.30'	136.19'	136°19'53"
C23	47.00'	34.23'	17.91'	41°43'35"
C24	47.00'	41.83'	22.42'	50°59'42"
C25	47.00'	35.77'	18.80'	43°36'38"
C26	50.00'	74.81'	46.40'	85°43'17"
C27	50.00'	11.22'	5.63'	12°51'14"
C28	50.00'	42.08'	22.37'	48°11'52"
C29	50.00'	21.53'	10.93'	24°40'11"
C30	600.00'	127.52'	64.00'	121°36'
C31	575.00'	100.00'	50.13'	08°57'52"
C32	625.00'	96.20'	48.19'	08°49'07"
C33	575.00'	28.96'	14.49'	02°53'10"
C34	575.00'	59.76'	29.91'	05°57'18"
C35	575.00'	11.27'	5.64'	01°07'24"
C36	625.00'	88.84'	44.49'	08°08'39"
C37	625.00'	7.36'	3.68'	00°40'28"
C38	600.00'	127.52'	64.00'	121°36'
C39	625.00'	136.53'	68.67'	121°36'
C40	575.00'	122.21'	61.33'	121°36'
C41	625.00'	47.74'	23.88'	02°22'36"
C42	625.00'	58.02'	29.03'	05°19'07"
C43	625.00'	27.07'	13.54'	02°28'55"
C44	575.00'	55.67'	27.86'	05°32'51"
C45	575.00'	60.15'	30.10'	05°59'36"
C46	575.00'	6.39'	3.19'	00°38'11"



REMAINDER

THE SOUTHWEST CORNER OF SECTION 13, T. 12 S, R. 20 E, M.D.B. & M. POSITION FALLS ON SEWER MANHOLE. CONFIRMED WITH TIES ON FILE WITH THE FRESNO COUNTY SURVEYOR.

3/4" IRON PIPE, DOWN 12", TAGGED RCE 19789, AS BEING THE SOUTH 1/4 CORNER OF SECTION 13, T. 12 S, R. 20 E, M.D.B. & M.