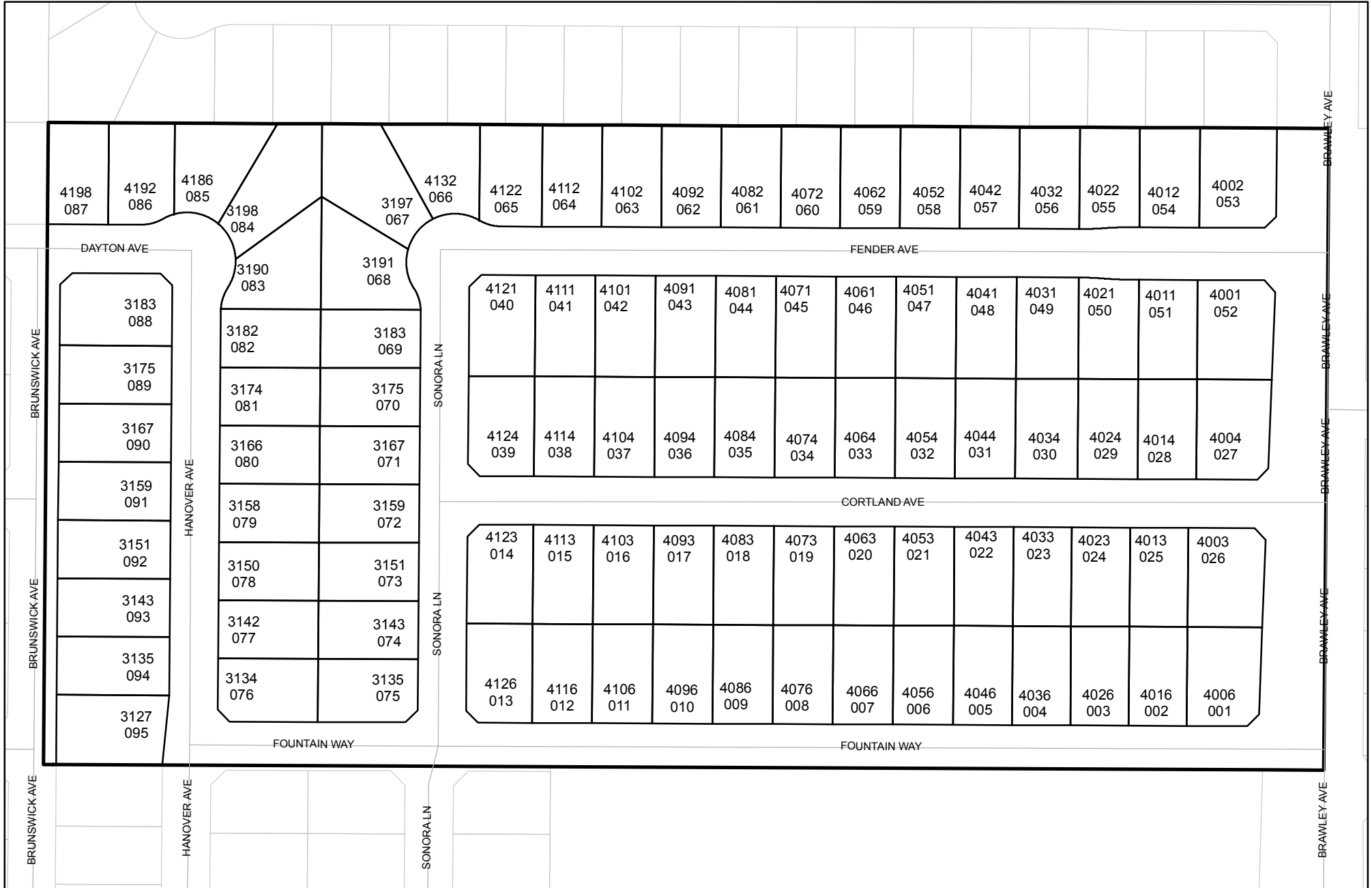




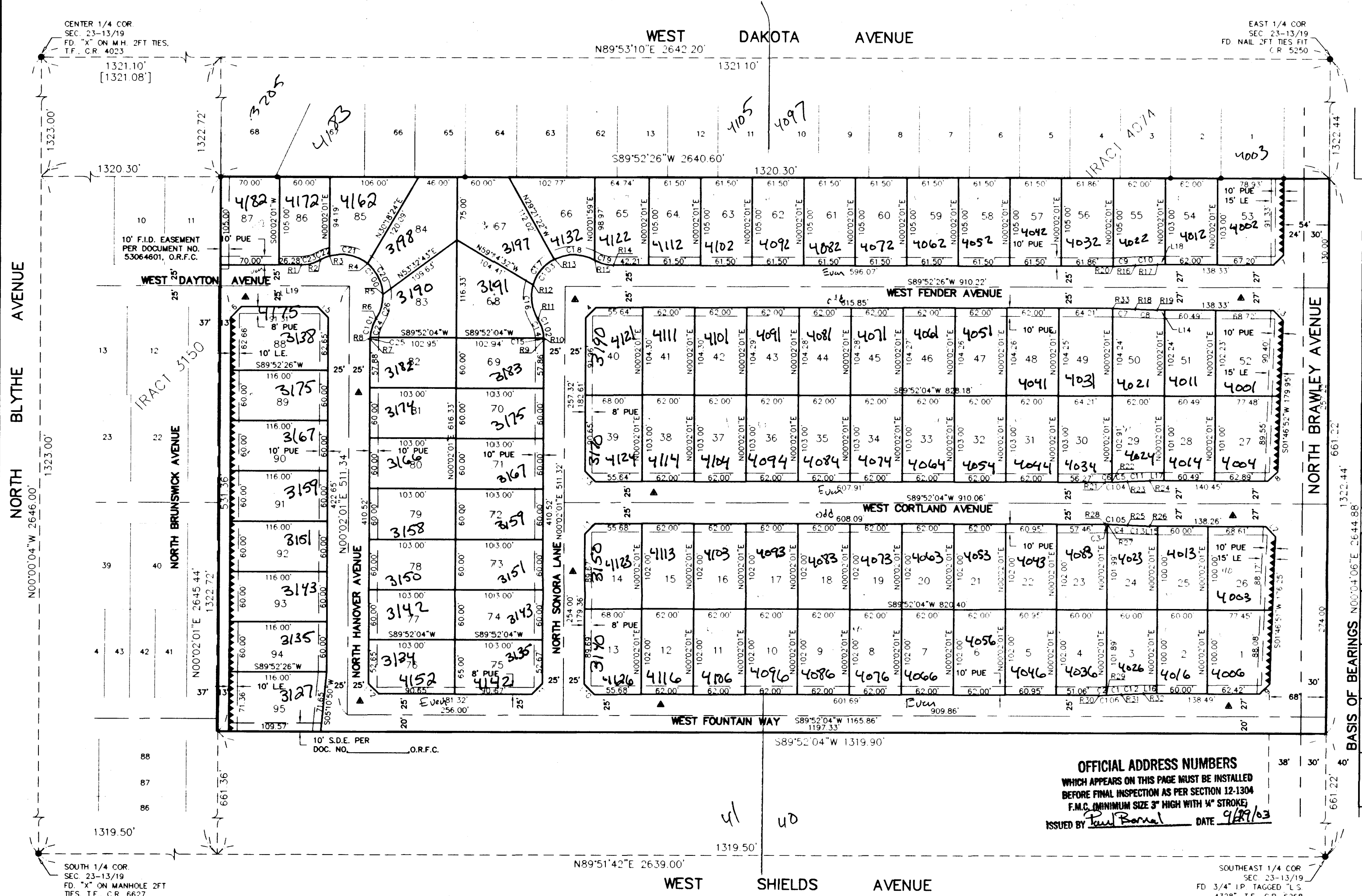
Prepared on Thu Oct 18 01:17:37 2018

Street Names, Addresses and (Lot Numbers) for T4701



TRACT NO. 4701

IN THE CITY OF FRESNO
 FRESNO COUNTY, CALIFORNIA
 SURVEYED AND PLATTED IN SEPTEMBER, 2002
 BY YAMABE & HORN ENGINEERING, INC.
 CONSISTING OF 2 SHEETS
 SHEET 2 OF 2



LEGEND

- () RECORD DATA PER TRACT NO. 4074, MONTE VISTA NO. 19, RECORDED IN VOLUME 48 OF PLATS AT PAGES 61 & 62, F.C.R.
- [] RECORD DATA PER TRACT NO. 3150, TREND HOMES NO. 11, RECORDED IN VOLUME 40 OF PLATS AT PAGE 65, F.C.R.
- FD. 3/4" I.P. DOWN 6" TAGGED "R.C.E. 30501", UNLESS OTHERWISE NOTED.
- FD. FOUND
- T.F. TIES ON FILE
- C.R. DENOTES CORNER RECORDS, ON FILE WITH FRESNO COUNTY SURVEYOR.
- I.P. IRON PIPE
- L.E. LANDSCAPE EASEMENT NOW OFFERED FOR DEDICATION FOR PUBLIC USE.
- P.U.E. PUBLIC UTILITY EASEMENT NOW OFFERED FOR DEDICATION FOR PUBLIC USE.
- S.D.E. PROPOSED STORM DRAIN EASEMENT PER DOCUMENT NUMBER _____
- ▲ INDICATES PORTIONS NOW OFFERED FOR DEDICATION FOR STREET PUBLIC STREET PURPOSES.
- ▲▲▲ INDICATES RELINQUISHMENT OF DIRECT VEHICULAR ACCESS RIGHTS.

BASIS OF BEARING

THE EAST LINE OF THE SOUTHEAST QUARTER OF SECTION 23, TOWNSHIP 13 SOUTH, RANGE 19 EAST (ALSO BEING THE CENTERLINE OF NORTH BRAWLEY AVENUE) IS TAKEN TO BE N0°04'06"E AS SHOWN ON ON THE MAP OF TRACT NO. 4074, MONTE VISTA NO. 19, RECORDED IN VOLUME 48 OF PLATS AT PAGES 61 AND 62, FRESNO COUNTY RECORDS.

NOTE

SET 3/4" x 30" IRON PIPE DOWN 0.5', TAGGED "RCE 30501" AT ALL LOT CORNERS, UNLESS OTHERWISE NOTED

OFFICIAL ADDRESS NUMBERS
 WHICH APPEARS ON THIS PAGE MUST BE INSTALLED
 BEFORE FINAL INSPECTION AS PER SECTION 12-1304
 F.M.C. MINIMUM SIZE 3" HIGH WITH 1/4" STROKE
 ISSUED BY Paul Bernal DATE 9/29/03

3204	62
3192	63
3170	64
3150	65
3130	66
3110	67
3090	68
3070	69
3050	70

RADIAL TABLE		CURVE TABLE			
LINE	BEARING	CURVE	DELTA	RADIUS	LENGTH
R1	N00°07'34"W	C1	2°52'06"	350.00'	17.52'
R2	S30°08'57"E	C2	1°27'50"	350.00'	8.94'
R3	S16°07'36"E	C3	0°24'54"	350.00'	2.54'
R4	N39°08'47"E	C4	3°55'02"	350.00'	23.93'
R5	S87°13'57"W	C5	3°01'57"	350.00'	18.52'
R6	S57°25'08"E	C6	1°17'59"	350.00'	7.94'
R7	N89°57'59"W	C7	4°19'56"	350.00'	26.46'
R8	S87°15'45"E	C8	4°19'56"	350.00'	26.46'
R9	N89°52'26"E	C9	4°19'56"	350.00'	26.46'
R10	S87°08'32"W	C10	4°19'56"	350.00'	26.46'
R11	N57°15'58"E	C11	4°19'56"	350.00'	26.46'
R12	N74°15'13"W	C12	4°19'56"	350.00'	26.46'
R13	S27°14'13"E	C13	4°19'56"	350.00'	26.46'
R14	N00°07'34"W	C14	29°52'33"	45.00'	23.46'
R15	S29°52'51"W	C15	2°43'54"	45.00'	2.15'
R16	S04°27'30"E	C16	48°28'49"	50.00'	42.31'
R17	S00°07'34"E	C17	47°00'59"	50.00'	41.03'
R18	N04°12'22"E	C18	57°07'04"	50.00'	49.84'
R19	N00°07'34"W	C19	30°00'25"	45.00'	23.57'
R20	N00°07'34"W	C20	48°05'09"	50.00'	41.96'
R21	N00°07'56"W	C21	55°16'23"	50.00'	48.23'
R22	N01°25'55"W	C22	14°01'21"	50.00'	12.24'
R23	S04°27'52"E	C23	30°01'23"	45.00'	23.58'
R24	S00°07'56"E	C24	29°50'37"	45.00'	23.44'
R25	N04°12'00"E	C25	2°42'14"	45.00'	2.12'
R26	N00°07'56"W	C26	35°20'55"	50.00'	30.85'
R27	S00°16'58"W	C100	152°43'48"	50.00'	133.28'
R28	S00°07'56"E	C101	32°32'51"	45.00'	25.56'
R29	N01°35'46"W	C102	32°36'28"	45.00'	25.61'
R30	S00°07'56"E	C103	152°36'52"	50.00'	133.18'
R31	N04°27'52"W	C104	4°19'56"	350.00'	26.46'
R32	S00°07'56"E	C105	4°19'56"	350.00'	26.46'
R33	S00°07'34"E	C106	4°19'56"	350.00'	26.46'

LINE TABLE		
LINE	LENGTH	BEARING
L1	17.45'	N44°56'21"E
L2	16.53'	S44°11'10"E
L3	16.52'	S44°09'26"E
L4	17.49'	N44°57'57"E
L5	17.44'	S45°02'46"E
L6	17.47'	N44°57'14"E
L7	16.53'	N44°58'16"E
L8	16.54'	N45°49'31"E
L9	17.22'	N45°49'43"E
L10	17.39'	S45°03'22"E
L11	17.47'	N44°57'03"E
L12	17.44'	S45°02'34"E
L13	17.44'	N45°03'42"W
L14	9.12'	S89°52'26"W
L15	9.65'	S89°52'04"W
L16	16.07'	S89°52'04"W
L17	17.07'	S89°52'04"W
L18	9.13'	S89°52'26"W
L19	154.00'	S89°52'26"W

