



# Street Names, Addresses and (Lot Numbers) for T4637

Prepared on Mon Oct 29 22:54:12 2018



**BASIS OF BEARINGS**

THE EAST LINE OF SECTION 32 T. 12 S. R. 20 E., M.D.B.M. PER RECORD OF SURVEY RECORDED IN BOOK 18, PAGE 56, F.C.R., TAKEN TO BE N 0°30'00" E.

**MAP OF TRACT NO. 4637**  
 IN THE CITY OF FRESNO, STATE OF CALIFORNIA  
 BOUNDARY CONTROL MAP  
 SHEET 2 OF 10

NE COR. SEC. 32, 12/20 POSITION FALLS ON SEWER MAIN POSITION ESTABLISHED PER I.F. CR. #2532

PARCEL 'A' PARCEL MAP NO. 83-20 BK. 42, PG. 85 PM, F.C.R.

LOT 1 TRACT NO. 3778 VOL. 47, PG. 57 PLATS, F.C.R.

LOT 1 TRACT NO. 3871 VOL. 44, PG. 82, 83, 84 PLATS, F.C.R.

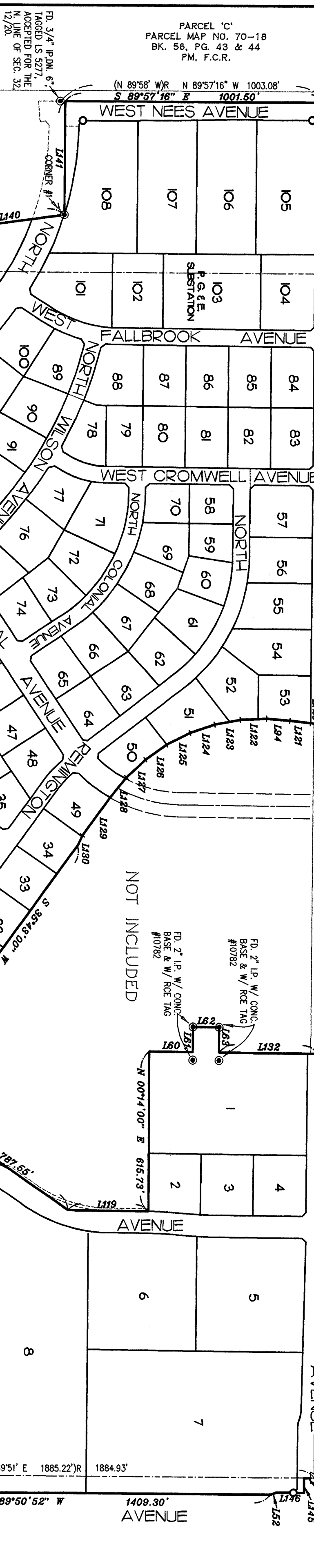
PARCEL MAP NO. 89-31 BK. 50, PG. 87 PM, F.C.R.

PARCEL 'A' PARCEL MAP NO. 86-51 BK. 46, PG. 39 PM, F.C.R.

PARCEL 'A' PARCEL MAP NO. 85-40 BK. 44, PG. 31 PM, F.C.R.

PARCEL 'A' PARCEL MAP NO. 84-23 BK. 43, PG. 20 PM, F.C.R.

TOWNSITE OF PINEDALE VOL. 9, PG. 98 PLATS, F.C.R.



**LEGEND**

- FD. 3/4" I.P. OR AS NOTED HEREON.
- △ SECTION CORNER MONUMENT FOUND AND ACCEPTED AS NOTED.
- (R) RECORD DATA PER RECORD OF SURVEY RECORDED IN BOOK 18, PAGE 56, F.C.R.
- (R1) RECORD DATA PER PARCEL MAP NO. 77-23 FILED IN BK. 24 OF PARCEL MAPS AT PGS 81882, F.C.R.
- (R2) RECORD DATA PER TRACT NO. 2747, FILED IN VOL. 30 OF PLATS AT PGS 97 & 98, F.C.R.
- 10' PUE 10' PUBLIC UTILITY EASEMENT NOW OFFERED FOR DEDICATION FOR PUBLIC USE
- 15' FID 15' FRESNO IRRIGATION DISTRICT PIPELINE PREVIOUSLY DEDED PER INSTRUMENT OR F.C.
- INDICATES RIGHT-OF-WAY NOW OFFERED FOR DEDICATION FOR STREET PURPOSES
- TF. TIES ON FILE WITH FRESNO COUNTY SURVEYOR'S OFFICE
- F.C.R. FRESNO COUNTY RECORDS
- RAO INDICATES RADIAL LINE
- SET 3/4" IRON PIPE, 30" LONG UP 4", N. 6" DIAMETER X 30" SET MONUMENT DOWN 6" AND TAGGED LS 4823 EXCEPT AS NOTED.
- ▲ INDICATES RELINQUISHMENT OF DIRECT ACCESS RIGHTS

**NOTES.**

1. SEE SHEETS 4 & 9 FOR LINE, CURVE, AND RADIAL LINE TABLES.
2. SET 3/4" X 30" IRON PIPE DOWN 6" TAGGED LS 4823 FOR ALL CORNERS AND CURVE POINTS AND CORNER OFFSETS.

**MONUMENT NOTES.**

- CORNER #1: FD. 3/4" I.P., UP 4", SET TAG LS 4823 ACCEPTED FOR THE SOUTHEAST CORNER OF ADJOINERS DEED BK. 7437 PG. 818 O.R.F.C.
- CORNER #2: FD. 3/4" I.P., UP 2" SET TAG LS 4823 AT FENCE CORNER SOUTH AND NORTHEAST ACCEPTED FOR THE SOUTHWEST CORNER OF ADJOINERS DEED BK. 7437 PG. 818 O.R.F.C. AND THE EAST LINE OF P.M. #77-23.
- CORNER #3: FD. OLD 3/4" I.P., DN. 2" SET TAG LS 4823 ACCEPTED FOR THE WEST LINE OF LANDS SHOWN ON RECORD OF SURVEY REFERENCED HEREON AS (R)
- CORNER #4: FD. OLD 3/4" I.P., DN. 2" SET TAG LS 4823 ACCEPTED FOR THE NORTHEAST CORNER OF OUTLOT 'A' OF TRACT NO. 2747 ALSO BEING THE SOUTHEAST CORNER OF OUTLOT 'A' OF P.M. #77-23.
- CORNER #5: FD. 3/4" I.P., DN. 4" SET TAG LS 5277 ACCEPTED FOR THE SOUTHEAST CORNER OF TRACT NO. 2747
- CORNER #6: POINT 'A' AS REFERENCED ON RECORD OF SURVEY, OR REFERENCED HEREON, SET BETWEEN CORNERS #5 & #7 REFERENCED HEREON AND AT A PROPOSED POSITION SHOWN AS (R)2 REFERENCED HEREON.
- CORNER #7: FD. 3/4" I.P., DN. 6" TAGGED LS 2931. ACCEPTED FOR THE SOUTHEAST CORNER OF P.M. #77-23. (R)1 REFERENCED HEREON.
- CORNER #8: FD. 1" I.P. FLUSH, SET TAG LS 4823, AT FENCE CORNER N & E.
- CORNER #9: FD. 1" I.P. FLUSH, SET TAG LS 4823, AT FENCE CORNER N & W.

Prepared by  
**PROVOST & PRITCHARD**  
 ENGINEERING GROUP  
 288 WEST CROMWELL AVENUE  
 FRESNO, CALIFORNIA 93705  
 208/446-2780 FAX 208/446-9755  
 089 NO. 9742300  
 DATE: AUGUST 12, 1998

GRAPHIC SCALE  
 0 300 300  
 1 INCH = 300 FEET

**BASIS OF BEARINGS**

THE EAST LINE OF SECTION 30 T. 12 S. R. 30 E. M.D. 244 PER RECORD OF SURVEY RECORDED IN BOOK 18, PAGE 58, F.C.R., TAKEN TO BE N 0°30'00" E.

**MAP OF**

**TRACT NO. 4637**

IN THE CITY OF FRESNO  
COUNTY OF FRESNO, STATE OF CALIFORNIA

BOUNDARY CONTROL MAP

SHEET 2 OF 10

PARCEL 'A'  
PARCEL MAP NO. 83-20  
BK. 42, PG. 85  
P.M., F.C.R.

LOT 1  
TRACT NO. 3778  
VOL. 47, PG. 57  
PLATS, F.C.R.

LOT 1  
TRACT NO. 3871  
VOL. 44, PG. 82, 83, 84  
PLATS, F.C.R.

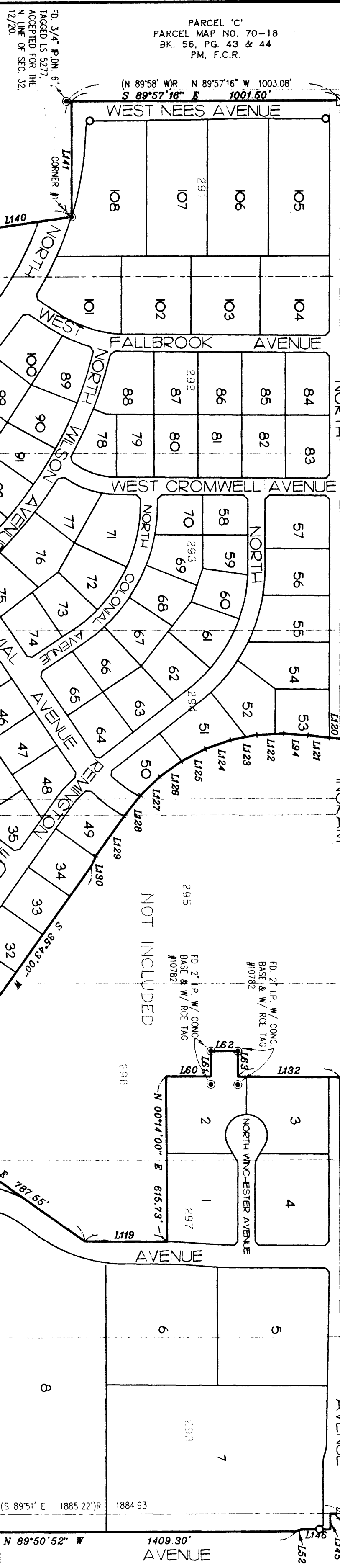
PARCEL MAP NO. 89-31  
BK. 50, PG. 87  
P.M., F.C.R.

PARCEL 'A'  
PARCEL MAP NO. 86-51  
BK. 45, PG. 36  
P.M., F.C.R.

PARCEL 'A'  
PARCEL MAP NO. 85-40  
BK. 44, PG. 31  
P.M., F.C.R.

PARCEL 'A'  
PARCEL MAP NO. 84-23  
BK. 43, PG. 20  
P.M., F.C.R.

TOWNSHIP OF PINEDALE  
VOL. 9, PG. 99  
PLATS, F.C.R.



**NOTES.**

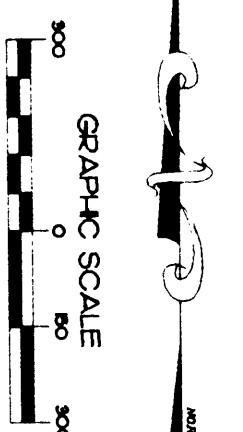
1. SEE SHEETS 4 & 9 FOR LINE, CURVE, AND RADIAL LINE TABLES.
2. SET 3/4" X 30" IRON PIPE DOWN 6" TAGGED LS 4823 FOR ALL CORNERS AND CURVE POINTS AND CORNER CUTOFFS.

**MONUMENT NOTES.**

- CORNER #1: FD 3/4" IP, UP 4", SET TAG LS 4823 AT SOUTHWEST CORNER OF ADJOINERS DEED BK. 7457 PG. 818 OR F.C.
- CORNER #2: FD 3/4" IP, UP 2", SET TAG LS 4823 AT FENCE CORNER SOUTH AND NORTHEAST ACCEPTED FOR THE SOUTHWEST CORNER AND THE EAST LINE OF P.M. #17-23.
- CORNER #3: FD OLD 3/4" IP, ON 2", SET TAG LS 4823 ON RECORD OF SURVEY REFERENCED HEREON AS (R).
- CORNER #4: FD OLD 3/4" IP, ON 2", SET TAG LS 4823 ACCEPTED FOR THE NORTHEAST CORNER OF OUTLOT 'A' OF TRACT NO. 2747 ALSO BEING THE SOUTHWEST CORNER OF OUTLOT 'A' OF P.M. #77-23.
- CORNER #5: FD 3/4" IP, ON 4", SET TAG LS 5277 ACCEPTED FOR THE SOUTHWEST CORNER OF TRACT NO. 2747 R-1 REFERENCED HEREON.
- CORNER #6: POINT 'A' AS REFERENCED ON RECORD OF SURVEY (OR REFERENCED HEREON) SET 3/4" X 30" IP, TAGGED LS 4823 ON LINE BETWEEN CORNERS #5 & #7 REFERENCED HEREON AND AT A PROXIMATE POSITION SHOWN AS (R) REFERENCED HEREON.
- CORNER #7: FD 3/4" IP, ON 6", TAGGED LS 5931 ACCEPTED FOR THE SOUTHWEST CORNER OF P.M. #17-23.
- CORNER #8: TO 1" IP, FLUSH, SET TAG LS 4823, AT FENCE CORNER N & E.
- CORNER #9: TO 1" IP, FLUSH, SET TAG LS 4823, AT FENCE CORNER N & W.

**LEGEND**

- FD 3/4" IP, OR AS NOTED HEREON
- △ SECTION CORNER MONUMENT FOUND AND ACCEPTED AS NOTED.
- (R) RECORD DATA PER RECORD OF SURVEY RECORDED IN BOOK 18, PAGE 58, F.C.R.
- (R1) RECORD DATA PER PARCEL MAP NO. 77-23 FILED IN BK. 24 OF PARCEL MAPS AT PGS 81&82, F.C.R.
- (R2) RECORD DATA PER TRACT NO. 2747, FILED IN VOL. 30 OF PLATS AT PGS 97 & 98, F.C.R.
- 10 POE TO PUBLIC UTILITY EASEMENT NOW OFFERED FOR DEDICATION FOR PUBLIC USE
- 15 FD 15' FRESNO IRRIGATION DISTRICT PRELINE PREVIOUSLY DEEDED PER INSTRUMENT RECORDED \_\_\_\_\_ AS DOCUMENT NO. \_\_\_\_\_ O.R.F.C.
- ▲ INDICATES RIGHT-OF-WAY NOW OFFERED FOR DEDICATION FOR STREET PURPOSES
- TF TIES ON FILE WITH FRESNO COUNTY SURVEYOR'S OFFICE
- F.C.R. FRESNO COUNTY RECORDS
- INDICATES RADIAL LINE
- SET 3/4" IRON PIPE, 30" LONG UP 4", IN 6" DIAMETER X 30" CONCRETE MONUMENT DOWN 6" AND TAGGED LS 4823 EXCEPT AS NOTED
- ▲▲▲ INDICATES REINFORCEMENT OF DIRECT ACCESS RIGHTS
- THE SHADED BLUE BORDER INDICATES THE LIMITS OF THIS SUBDIVISION



Prepared by  
**PROVOST & PRITCHARD**  
ENGINEERING GROUP

296 WEST ORCHARD AVENUE  
FRESNO, CALIFORNIA 93711-6162  
209/448-2700 FAX 209/448-2715

JOB NO.: 9742500  
DATE: JUNE 18, 1998  
DOW JOB No. 97-574M  
DWG. #097224